



# A two bedroom garden flat located moments from Bishops Park

Edgarley Terrace, London, SW6

£800,000 Share of Freehold





- Two double bedrooms
  - Garden
  - Floods of natural light
  - Excellent transport links
  - Victorian property
- 

#### **Location**

Edgarley Terrace is a residential street which runs east off Fulham Palace Road and is near the shops and restaurants of Munster Village and Fulham Road. Bishops Park and the river are within walking distance, as is the nearest tube stations, Putney Bridge & Parsons Green (District Line).

#### **About this property**

On entering the property, you will firstly find an impressive principle bedroom with bay window, followed by a second double bedroom. Both bedrooms feature high ceilings and built in wardrobes. There is then an open plan kitchen/reception room with space for a dining table. Double doors then lead out to a private patio garden.

#### **Tenure**

Share of Freehold

#### **Local Authority**

Hammersmith and Fulham London Borough Council

#### **Energy Performance**

EPC Rating = C

#### **Viewing**

All viewings will be accompanied and are strictly by prior arrangement through Savills Bishops Park Office. Telephone: +44 (0) 207 578 9050.



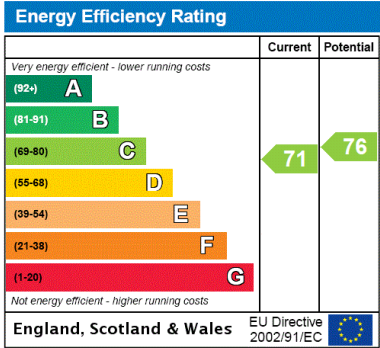
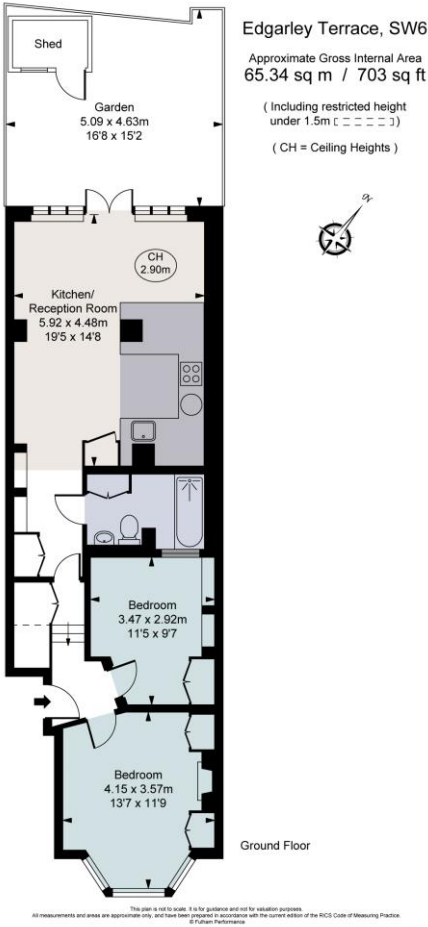




Edgarley Terrace, London, SW6  
Gross Internal Area 703 sq ft, 65.34 m²

Tom Reeves  
Bishops Park  
+44 (0) 207 578 9050  
tom.reeves@savills.com

[onTheMarket.com](#) | [savills](#) | [savills.co.uk](#)



**Important Notice** Savills, its clients and any joint agents give notice that 1: They are not authorised to make or give any representations or warranties in relation to the property either here or elsewhere, either on their own behalf or on behalf of their client or otherwise. They assume no responsibility for any statement that may be made in these particulars. These particulars do not form part of any offer or contract and must not be relied upon as statements or representations of fact. 2: Any areas, measurements or distances are approximate. The text, photographs and plans are for guidance only and are not necessarily comprehensive. It should not be assumed that the property has all necessary planning, building regulation or other consents and Savills have not tested any services, equipment or facilities. Purchasers must satisfy themselves by inspection or otherwise. 20200713AFOG

