



**A VERY LARGE 3/4 BEDROOM MAISONETTE IN A RED BRICK 'LION HOUSE'
WITH PLANNING PERMISSION TO ADD A REAR MANSARD AND ROOF TERRACE**

Buer Road, Putney Bridge, Fulham, London, SW6

Leasehold

savills

- Three double bedrooms
- Generous living space
- Sought after location
- Over 1300sqft
- Potential to add a roof terrace and rear mansard (STP)

Local Information

Buer Road is a desirable quiet residential street situated a short walk from both the ever popular Bishops Park and the River Thames. It is located between Fulham and New Kings Road, which are well served for bars, restaurants and shops, including the Parsons Green area. The nearest underground station is Putney Bridge which is approximately 0.3 miles away.

About this property

A large three bedroom apartment laid out over two floors. The second floor hosts two bedrooms, a separate kitchen, a bathroom and a bright reception room with fire place, the top floor comprises a double bedroom, shower room and eaves storage.

Tenure

Leasehold

Local Authority

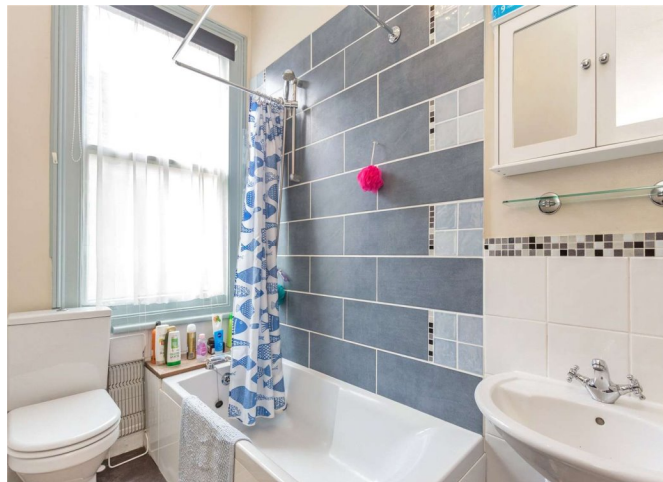
Hammersmith and Fulham London Borough Council, Town Hall

Energy Performance

EPC Rating = D

Viewing

All viewings will be accompanied and are strictly by prior arrangement through Savills





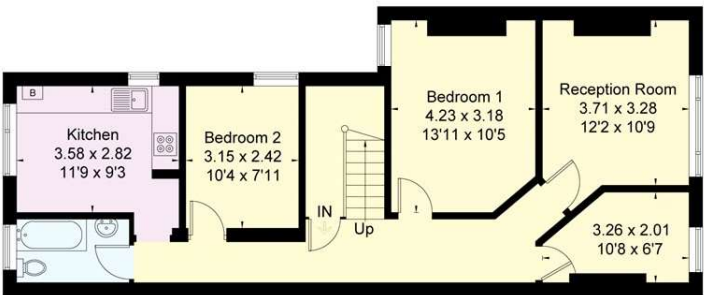
Buer Road, Putney Bridge, Fulham, London, SW6
Gross Internal Area 1391 sq ft, 129.2 m²

 onTheMarket.com |  savills | savills.co.uk

George Smith
Bishops Park
+44 (0) 207 578 9050
gwsmith@savills.com

Buer Road, SW6

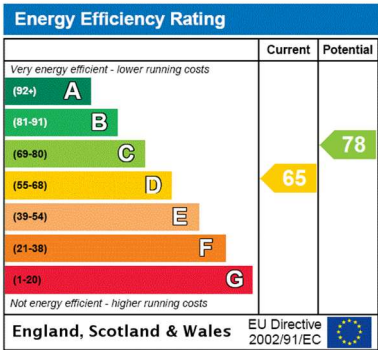
Gross Internal Area (approx) = 129.3 sq m / 1391 sq ft
(Of which 33.4 sq m / 359 sq ft is restricted head height)
For identification only. Not to scale.
© Floorplanz Ltd



Second Floor



Third Floor



Important notice Savills, its clients and any joint agents give notice that 1: They are not authorised to make or give any representations or warranties in relation to the property either here or elsewhere, either on their own behalf or on behalf of their client or otherwise. They assume no responsibility for any statement that may be made in these particulars. These particulars do not form part of any offer or contract and must not be relied upon as statements or representations of fact. 2: Any areas, measurements or distances are approximate. The text, photographs and plans are for guidance only and are not necessarily comprehensive. It should not be assumed that the property has all necessary planning, building regulation or other consents and Savills have not tested any services, equipment or facilities. Purchasers must satisfy themselves by inspection or otherwise. 20190916CTTE

