



BRISTOL • BS4 3EW

# ONE, TWO & THREE BEDROOM APARTMENTS





LATER DELIVERY

THE COLTHURST  
east block

THE PIAZZA  
west block



## THE DEVELOPMENT

Paintworks is now widely acknowledged as one of Bristol's most successful and vibrant mixed-use cultural neighbourhoods.

This Bristol icon has become one of the most desirable areas of the city in which to live, thanks to its waterside location and close proximity to Bristol Temple Meads station and Bristol city centre.

The final phase of this development will provide a total of 92 apartments and around 19,000 sq ft of commercial space, with a shop, restaurant and café.

The development will also include car parking, secure cycle storage, public open space and landscaping works.

## THE JOURNEY

Originally dating back to 1850 Phoenix Wharf, as it was known, was a paint and varnish factory built by Bristol Paintmakers, Colthurst & Harding. Extended and altered over the next 100 years, it was taken over by Courtaulds and fell into decline as manufacturing became centralised elsewhere. The whole 12 acres had been assembled by the 1930s.

As buildings were vacated from paint making they were let out to other users. Eventually all paint manufacture ceased and the site became known as Central Trading Estate, which slowly became a mass of derelict buildings and vertical rubble.

The aim at Paintworks was to create an entirely new, vibrant, mixed-use district out of a previously derelict industrial complex.

Drawing heavily on the intimate street patterns of historic town centres, and aimed at creative-minded people & companies, Paintworks seeks to build an interactive community, to provide a focal point and catalyst for the regeneration of the surrounding area.

The Bristol icon is now a mix of creative businesses and tenants, exhibition/event space, popular cafés/bar which has quickly defined it as one of the best places to work and live in the City.



"Paintworks began as a genuine attempt to regenerate a mixed-use district, centred primarily on a sense of community, and in doing so provide a model for others to build on elsewhere."













“Bristol is an awesome city full of inspiring people and cool things, so its easy to create art based around the city as a subject. It is one of my favourite cities in the World and there is so much about it that I could have illustrated for Paintworks – it was a fun project to create art for.”

## THE LOGO CREATION

lesis Creative wanted to work with a local Bristol artist to produce an iconic piece for this iconic development. The logo design is just the beginning. This beautiful piece, showcasing some of the many wonderful things about The Paintworks and Bristol, will have a permanent space somewhere on the Paintworks IV development,

lesis Creative commissioned Keith Hopewell, aka SPZero, to bring this vision to life. He is an incredible, unique artist based in Bristol with artwork all over the UK. He has also expanded his work into Finland, Posca and Berlin with the Lost Souls. His most recent clients include Lamborghini, Samsung and the BBC.

Bristol is the capital of street art and graffiti in the UK, and one of the best places in Europe for street art. The mixture of mediums adorns its streets, underpasses, back-alleys, bridges, and almost every available surface in the city – it is outdoor exhibition for the creative arts community.

Paintworks IV, the final chance to own a brand new part of the iconic development in the creative quarter of Bristol.







Computer Generated Image – for illustrative purposes only





## ON ARCHITECTURE

Paintworks IV is a unique set of new buildings with a strong architectural foothold in the industrial warehouse legacy of the area.

This collection of robust predominantly brick 'warehouses' sit well with Bristol's maritime past and create an interesting series of social spaces close to the water along with a vibrant place to live.

The designs depart from the formulaic approach normally taken and express a lifestyle choice through their design. Interesting routes through the site connect the city with the water's edge between unique and individual structures.

The careful integration of old yet robust buildings knit the new forms into the historical fabric of this unique place.





Computer Generated Image – for illustrative purposes only



# BRISTOL

The city of Bristol continues to grow at an exponential rate with regeneration projects planned across the entire city.

The development of Bristol Temple Quarter is a sustainable and flourishing urban new quarter and a brand new Redcliff Quarter set to have some of the best bars, restaurants and shopping in the city.

Cabot Circus Shopping Centre is Bristol's ultimate shopping and dining experience and is just a short journey from Paintworks.

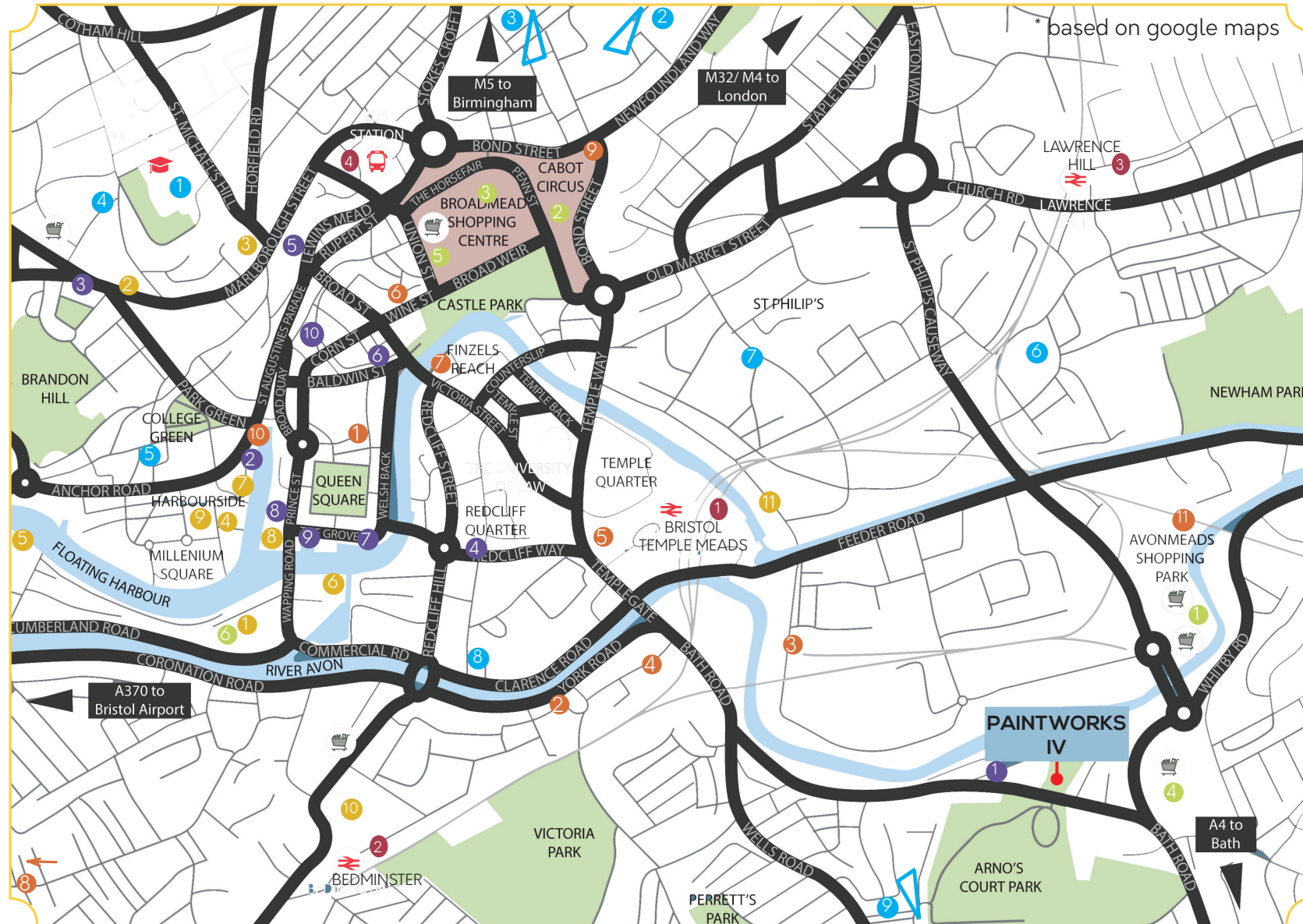
The larger urban area population is estimated to be 1.6 million and is amongst the most attractive, successful and culturally prestigious cities in the UK, enjoying a rising profile within Europe and beyond. It is one of the UK's fastest growing cities economically.

Bristol has a relatively young population profile with the median age of people living in Bristol standing at 32.5 years.

The City is an ideal place for regeneration with a distinct identity as Bristol's independent retail centre with a growing population of professionals and young families.

# LOCATIONS

## BRISTOL



## ● Bars and Restaurants

- 1 Bocabar
- 2 No.1 Harbourside
- 3 The Botanist
- 4 Pasture
- 5 Bristol Bistro
- 6 Brew Dog
- 7 Riverstation
- 8 Society Cafe
- 9 Mud Dock Cafe
- 10 Cosy Club
- 11 Bulrush
- 12 Matina
- 13 The Milk Thistle
- 14 Brozen Bar
- 15 Gin & Juice

## ● Shopping

- 1 Avonmeads Centre
- 2 Cabot Circus
- 3 Broadmeads Centre
- 4 Sainsbury's
- 5 St. Nicholas Market
- 6 Better Food Organics
- 7 Wapping Wharf
- 8 Clifton Village
- 9 The Galleries

## ● Education

- 1 University of Bristol
- 2 UWE
- 3 City of Bristol College
- 4 Bristol Grammar School
- 5 Cathedral Primary School
- 6 Barton Hill Academy
- 7 Hannah More Primary
- 8 Redcliffe Nursery
- 9 Cleve House School

## ● Attractions

- 1 Wapping Wharf
- 2 Bristol Museum & Gallery
- 3 Christmas Steps
- 4 Bristol Aquarium
- 5 Brunel's SS Great Britain
- 6 M Shed
- 7 Watershed
- 8 Arnolfini
- 9 We The Curious
- 10 Windmill Hill City Farm
- 11 Motion Live Music Venue

## ● Sports and Leisure

- 1 Bristol Old Vic Theatre
- 2 Sweat Box Gym
- 3 Valesco Fitness Collective
- 4 Free Dog Bristol
- 5 The Warrior Programme
- 6 Hot Pod Yoga
- 7 Pacific Yoga
- 8 Ashton Gate Stadium
- 9 Showcase Cinema de Lux
- 10 Watershed Cinema
- 11 Showcase Avonmead

## ● Travel

- 1 Bristol Temple Meads
- 2 Bedminster
- 3 Lawrence Hill
- 4 Bristol Coach Station

# TRAVEL DISTANCES



Bristol is strategically located at the junction of the M4 and M5 motorways, 118 miles west of London.\* The city centre benefits from excellent road communications being only 4 miles from the M4/M5 intersection. The M4 is the east-west axis from London to Cardiff, whilst the M5 is the north-south west axis from Birmingham to Exeter.

The M48 motorway and Second Severn Crossing provide strong road links to Cardiff and South Wales and the M32 motorway spur links the M4 to Bristol City Centre.

The City Car Club has a vehicle on-site and Paintworks is served by a number of buses running from the centre of Bristol, harbour area and from Temple Meads station: 1, 57, 349 & X39.



Bristol Temple Meads station is located centrally and within a mile walk of the property. It represents part of the Great Western Mainline, providing regular direct intercity services to the UK's major cities and has recently undergone its largest modernisation since completion.

The £5.5bn electrification of the Great Western Mainline between London Paddington and Cardiff completed in December 2019, reducing the journey time between Bristol Temple Meads and London Paddington by 14 minutes, to 1hr 20mins and increasing capacity with an extra 15,000 seats during weekdays.



Bristol International Airport lies 8 miles\* south of the City Centre and is serviced by a dedicated coach link. It offers direct flights to over 125 destinations throughout the UK, all of the major European economies and also the USA. Bristol is strategically located at the junction of the M4 and M5 motorways.



Cycling is actively promoted. Cycle shower and changing facilities are available in the Deco Building. Secure cycle spaces, are available throughout Phases 1 and 2 and will be incorporated in future phases.

Castle Park	1.7 miles
Temple Meads Station	0.9 miles
University of Bristol	2.4 miles
University of West England	5.0 miles



Cabot Circus	1.7 miles
Stokes Croft	2.2 miles
Queens Square	1.5 miles
Colston Hall	1.9 miles

\*based on Google Maps





Alex  
Does  
Coffee

IN NEED OF A  
CAFFEINE FIX



GET YOUR  
LOCKS DONE

Lukasz  
Szejka  
Studio



Arts  
Community

ART FOR  
ARTS SAKE

Boca  
Bar

FOOD & DRINK  
LOUNGE HEAVEN



Martin Parr

Royal  
Photographic  
Society

PERUSE THE  
ART WORLD



## PAINTWORKS LIFE



Creative  
People and  
Businesses

INTERACTING &  
NETWORKING



HOST AN  
EVENT

Paintworks  
Event  
Space



# LOCATIONS

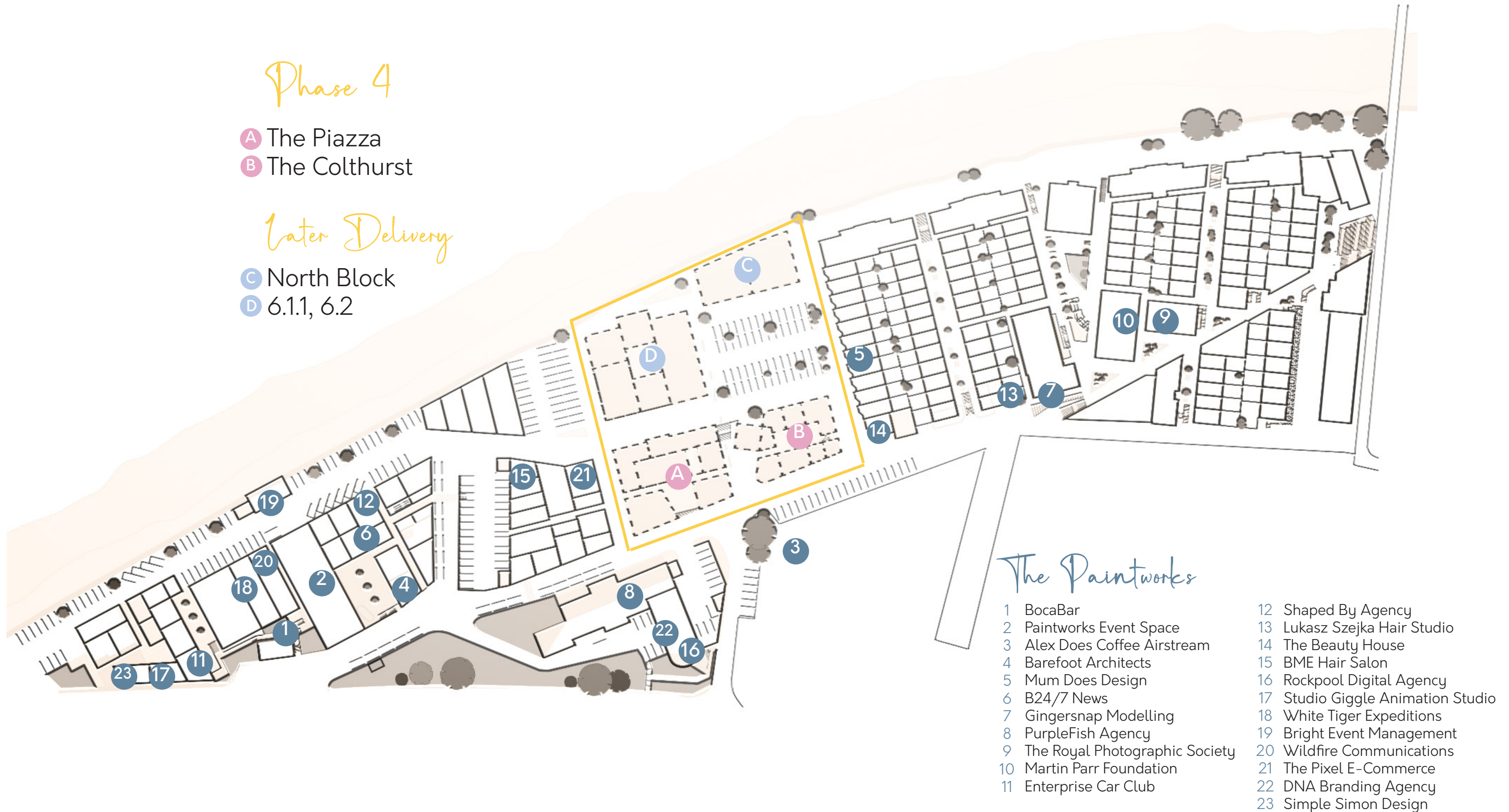
## THE PAINTWORKS

### Phase 4

- A The Piazza
- B The Colthurst

### Later Delivery

- C North Block
- D 6.1.1, 6.2





# West

## THE PIAZZA

On the southwest corner of the site, The Piazza sits between the new 'central' Colthurst building and the existing buildings. This building comprises a variety of architectural styles reflecting the ethos of The Paintworks. The Piazza is home to 19 apartments with underground parking and a well thought landscaped square.



Computer Generated Image – for illustrative purposes only

# East

## THE COLTHURST

The Colthurst is considered the central building on The Paintworks site. The building is a substantial and robust red brick warehouse, with arched windows, that includes a tower on the side of the building. Three buildings (later delivery) will be constructed on the northern side of the site that overlooks the river, and will be cantilevered over the riverside walkway and boat pond below.



Computer Generated Image – for illustrative purposes only



# Kitchen Dining



Computer Generated Image – for illustrative purposes only, kitchen sizes vary this is from Flat 18 The Piazza



# Living



Computer Generated Image – for illustrative purposes only



# Bathroom



*Computer Generated Image – for illustrative purposes only, bathroom sizes vary this is from Flat 16 The Piazza*

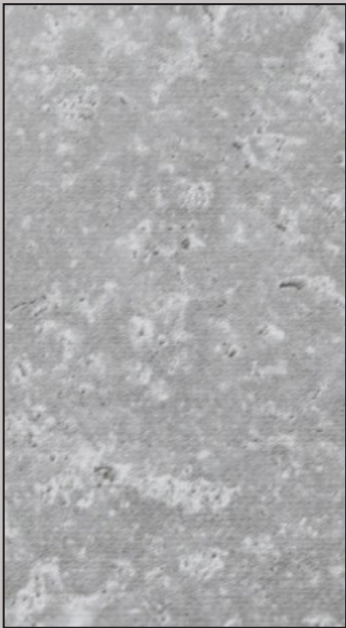
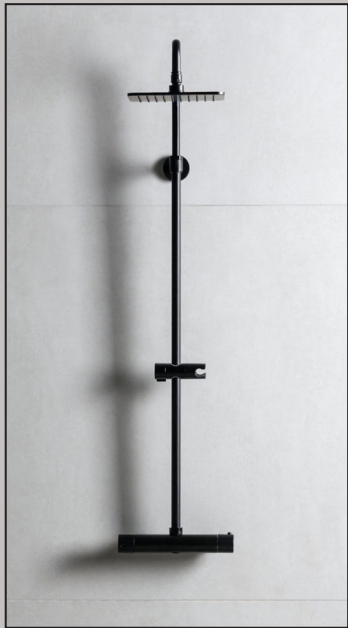


# Shower Room



*Computer Generated Image – for illustrative purposes only, bathroom sizes vary this is from Flat 16 The Colthurst*





SPECIFICATION

The development offers 46 brand new contemporary apartments.

We know how important it is to create a welcoming space that makes a house a home, which is why we have designed Paintworks IV with you in mind.

Providing specification and attention to detail that will give you a mixture of comfort and style in your new home.

BATHROOMS

- Fully tiled bathroom with concrete effect tiles
- Stand alone vanity unit with storage
- Matt black taps
- Single basin in grey
- Mirror above vanity unit & sink
- Glass Screen to Bath/Shower

KITCHENS

- Dove Grey Howden’s Cabinets
- White & grey marble effect composite worktops with 1.5 bowl inset sink with brushed brass tap
- Fully integrated appliances
- Bosch oven, hob, integrated microwave
- Lamona large fridge freezer
- Lamona Dishwasher

INTERIOR & DECORATION

- Painted finish to walls Dulux Heritage Beachcomb Grey
- Skirting, architrave and ceiling brilliant white paint
- Contemporary responsibly sourced timber grey internal doors
- Satin Steel ironmongery on all internal doors
- Concrete effect feature wall in each living room
- Alba Lalegno RVP Grey wood effect flooring

ELECTRICAL

- TV points to living room and bedrooms
- Telephone points to apartments
- LED recessed down-lighters throughout, no pendants
- Matt black light switches and sockets in bathrooms
- Satin Nickel switches and outlets in kitchen, living
- Electric panel radiators

HEATING & LAUNDRY

- Integrated washer/dryer in kitchen
- Efficient electric heating system
- Heated towel rails to all bathrooms



## FLOOR PLANS

The Piazza  
WEST

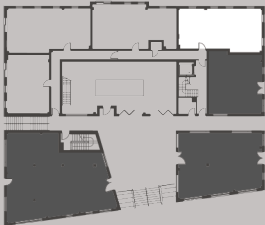


Floor Plans

Upper Ground

The Piazza  
No. 01

2 Bedroom



FLAT	SQFT	M2
Total Area	717	66
Living/Kitchen/Dining	304	28
Bedroom 1	125	11
Bedroom 2	116	11
Bath	46	4

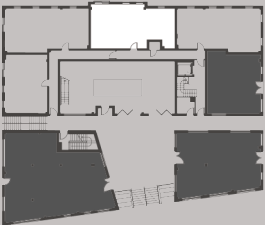
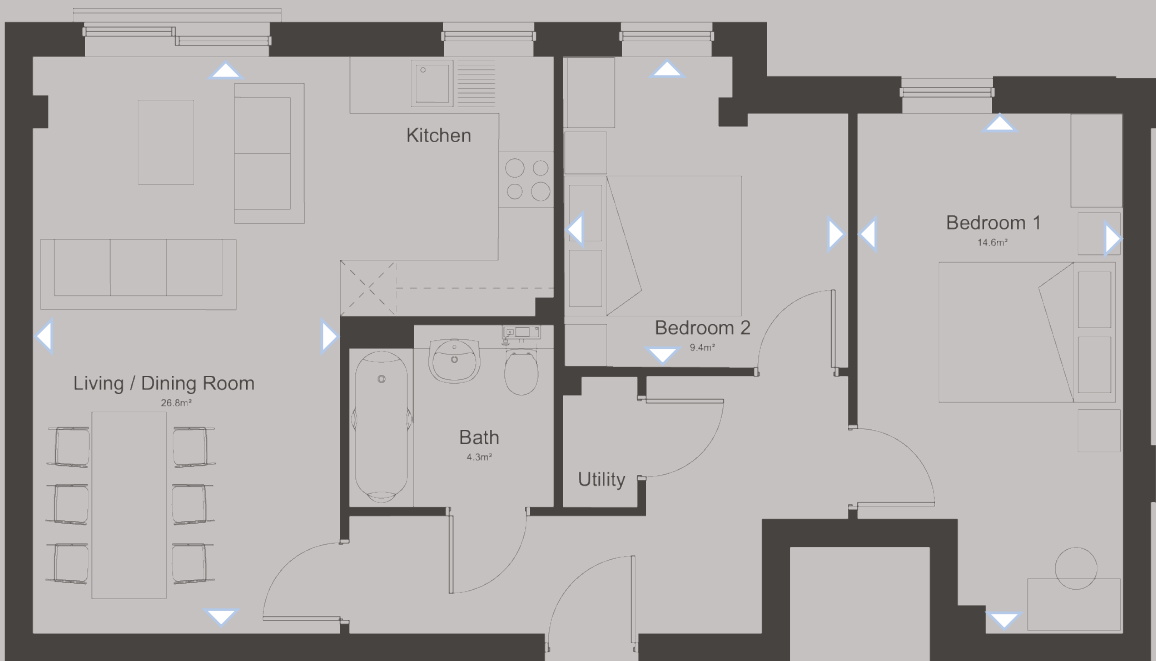
**Living/Dining**  
3806mm x 5872mm  
12'6" x 19'3"  
**Bedroom One**  
4073mm x 2850mm  
13'4" x 9'4"  
**Bedroom Two**  
4073mm x 2700mm  
13'4" x 8'10"

Floor Plans

Upper Ground

The Piazza  
No. 02

2 Bedroom



FLAT	SQFT	M2
Total Area	721	67
Living/Kitchen/Dining	288	27
Bedroom 1	157	14
Bedroom 2	101	9
Bath	46	4

**Living/Dining**  
6183mm x 3303mm  
20'3" x 10'10"  
**Bedroom One**  
5573mm x 2850mm  
18'3" x 9'4"  
**Bedroom Two**  
3333mm x 3065mm  
10'11" x 10'1"

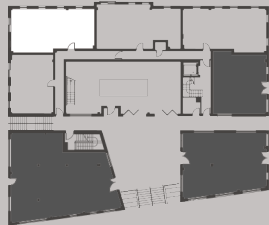
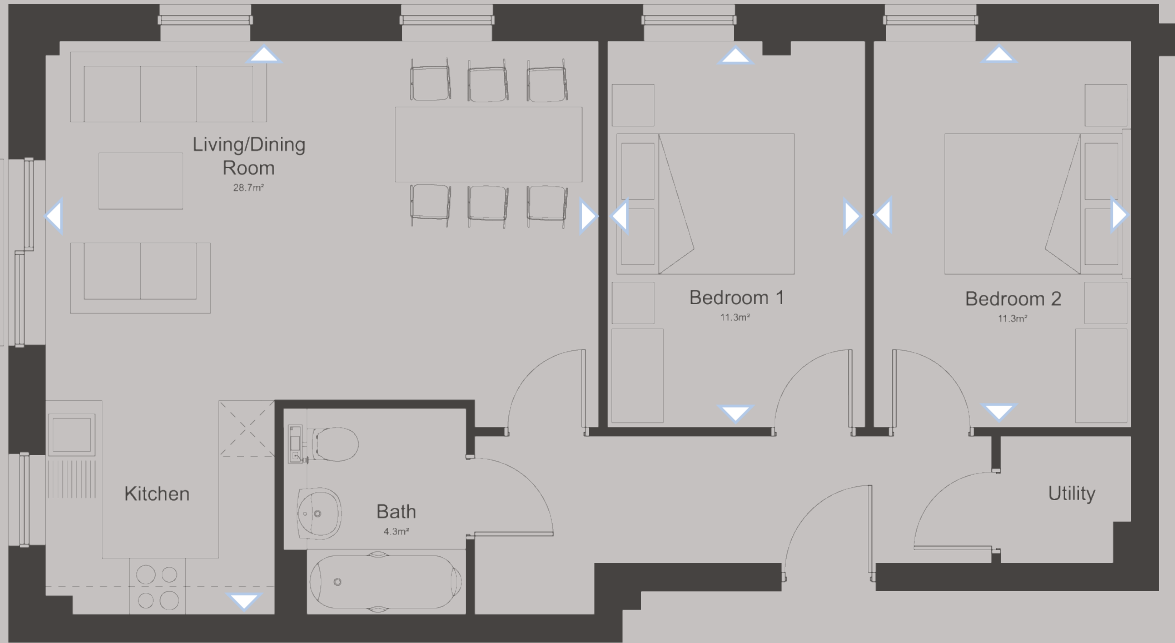


Floor Plans

Upper Ground

The Piazza  
No. 03

2 Bedroom



FLAT	SQFT	M2
Total Area	727	67
Living/Kitchen/Dining	309	29
Bedroom 1	121	11
Bedroom 2	121	11
Bath	46	4

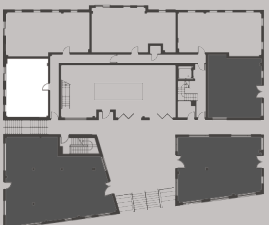
**Living/Dining**  
3828mm X 5918mm  
12'7" x 19'5"  
**Bedroom One**  
4123mm x 2755mm  
13'6" x 9'0"  
**Bedroom Two**  
4123mm x 2752mm  
13'6" x 9'0"

Floor Plans

Upper Ground

The Piazza  
No. 04

1 Bedroom



FLAT	SQFT	M2
Total Area	509	47
Living/Kitchen/Dining	252	23
Bedroom 1	130	12
Bath	46	4

**Living/Dining**  
3050mm x 5873mm  
10'0" x 19'3"  
**Bedroom One**  
2703mm x 4498mm  
8'10" x 14'9"

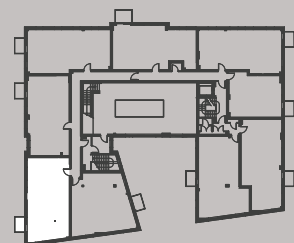
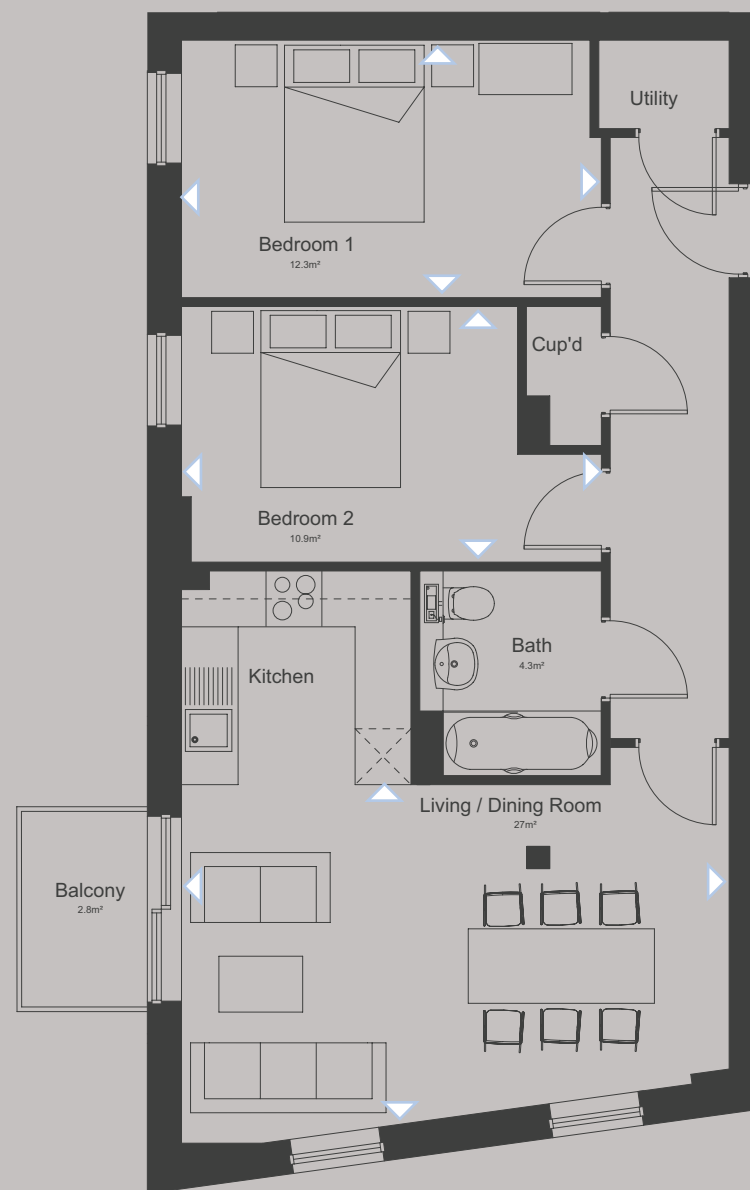


Floor Plans

First Floor

The Piazza  
No. 05

2 Bedroom



FLAT	SQFT	M2
Total Area	729	68
Living/Kitchen/Dining	290	27
Bedroom 1	132	12
Bedroom 2	117	11
Bath	46	4
Balcony	30	2

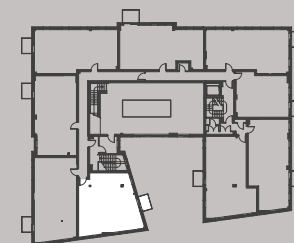
**Living/Dining**  
3553mm x 5883mm  
11'8" x 19'4"  
**Bedroom One**  
2766mm x 4510mm  
9'1" x 14'10"  
**Bedroom Two**  
2745mm x 4511mm  
9'0" x 14'10"

Floor Plans

First Floor

The Piazza  
No. 06

2 Bedroom



FLAT	SQFT	M2
Total Area	715	66
Living/Kitchen/Dining	297	27
Bedroom 1	119	11
Bedroom 2	121	11
Bath	46	4
Balcony	30	3

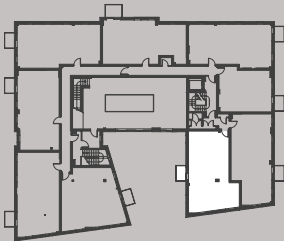
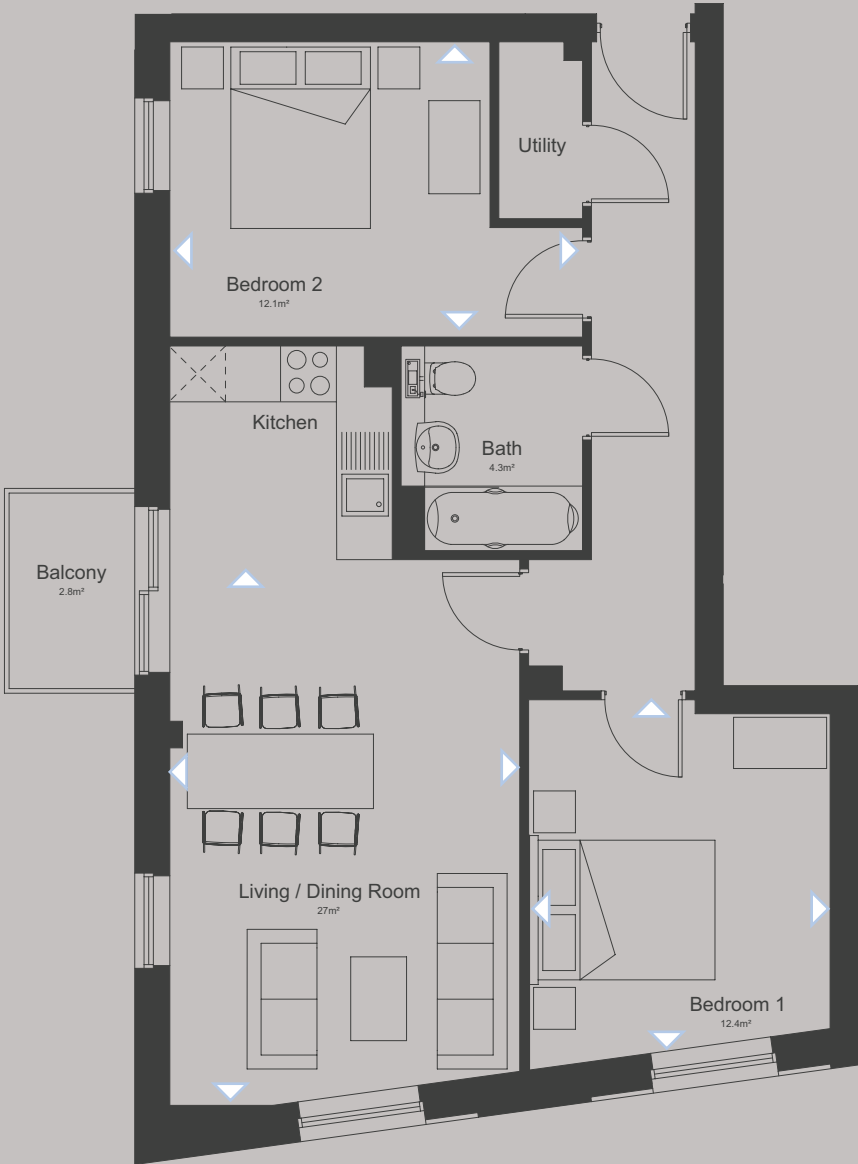
**Living/Dining**  
5259mm x 4564mm  
17'3" x 15'0"  
**Bedroom One**  
3449mm x 3210mm  
11'4" x 10'6"  
**Bedroom Two**  
4141mm x 2773mm  
13'7" x 9'1"



Floor Plans

First Floor

The Piazza  
No. 07  
2 Bedroom



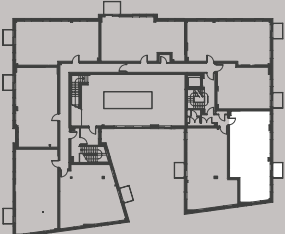
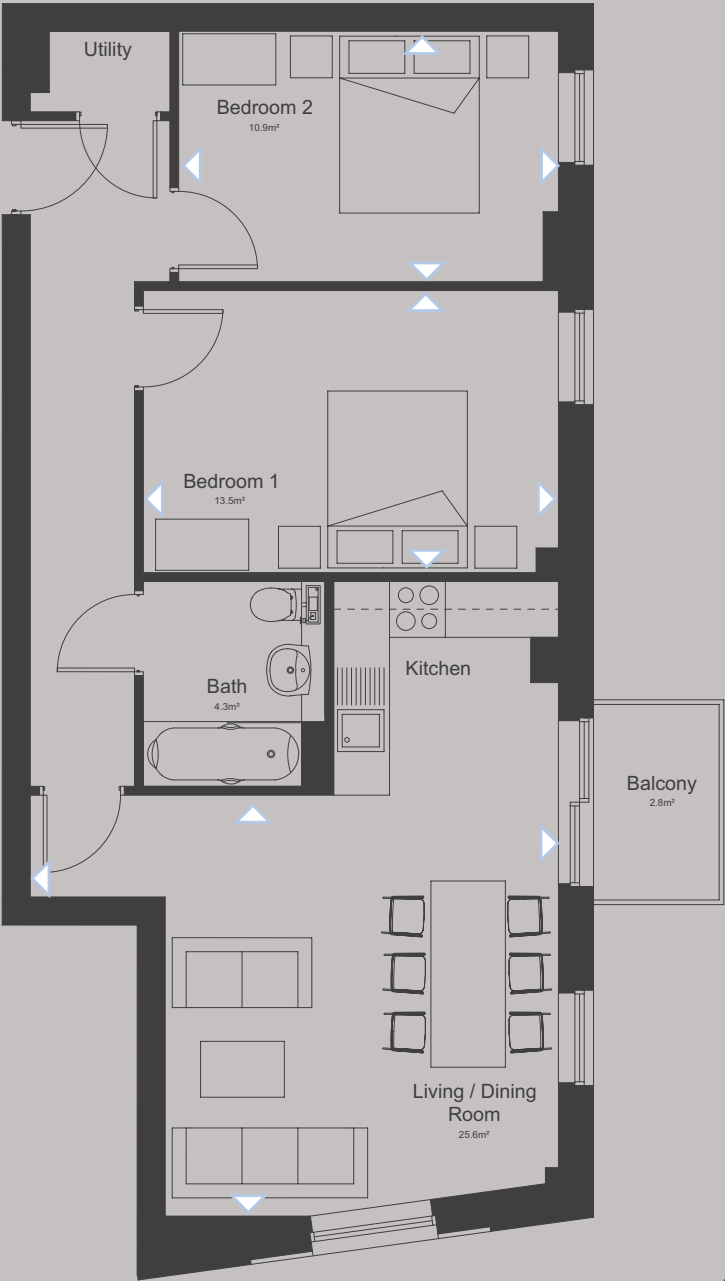
FLAT	SQFT	M2
Total Area	732	68
Living/Kitchen/Dining	300	27
Bedroom 1	133	12
Bedroom 2	130	12
Bath	46	4
Balcony	30.1	3

**Living/Dining**  
5862mm x 3760mm  
19'3" x 12'4"  
**Bedroom One**  
3559mm x 3240mm  
11'8" x 10'8"  
**Bedroom Two**  
4435mm x 3172mm  
14'7" x 10'5"

Floor Plans

First Floor

The Piazza  
No. 08  
2 Bedroom



FLAT	SQFT	M2
Total Area	71	66
Living/Kitchen/Dining	275	25
Bedroom 1	145	13
Bedroom 2	117	11
Bath	46	4
Balcony	30	3

**Living/Dining**  
4521mm x 4225mm  
14'10" x 13'10"  
**Bedroom One**  
3030mm x 4460mm  
9'11" x 14'8"  
**Bedroom Two**  
4080mm x 2690mm  
13'5" x 8'10"

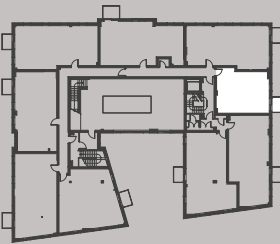
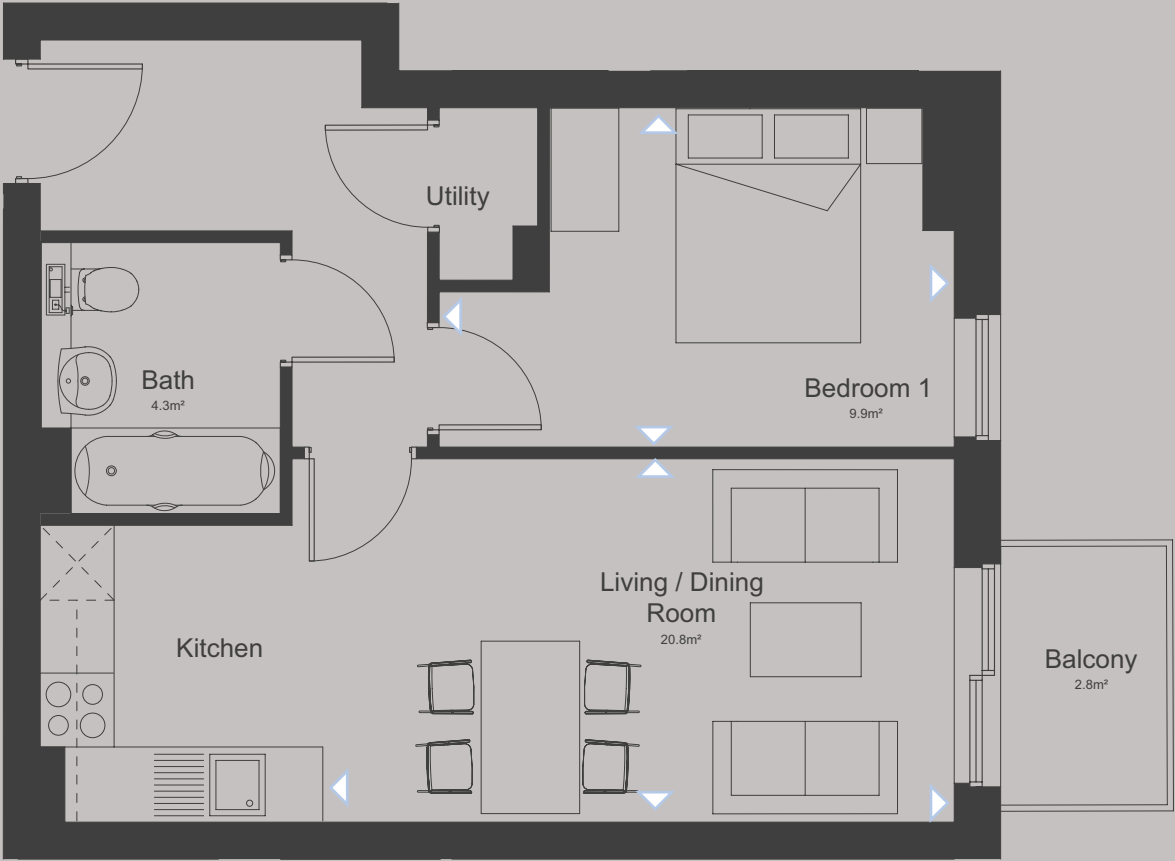


Floor Plans

First Floor

The Piazza  
No. 09

1 Bedroom



FLAT	SQFT	M2
Total Area	472	44
Living/Kitchen/Dining	303	28
Bedroom 1	124	11
Bedroom 2	120	11
Bath	46	4
Balcony	30	3

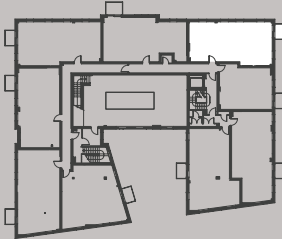
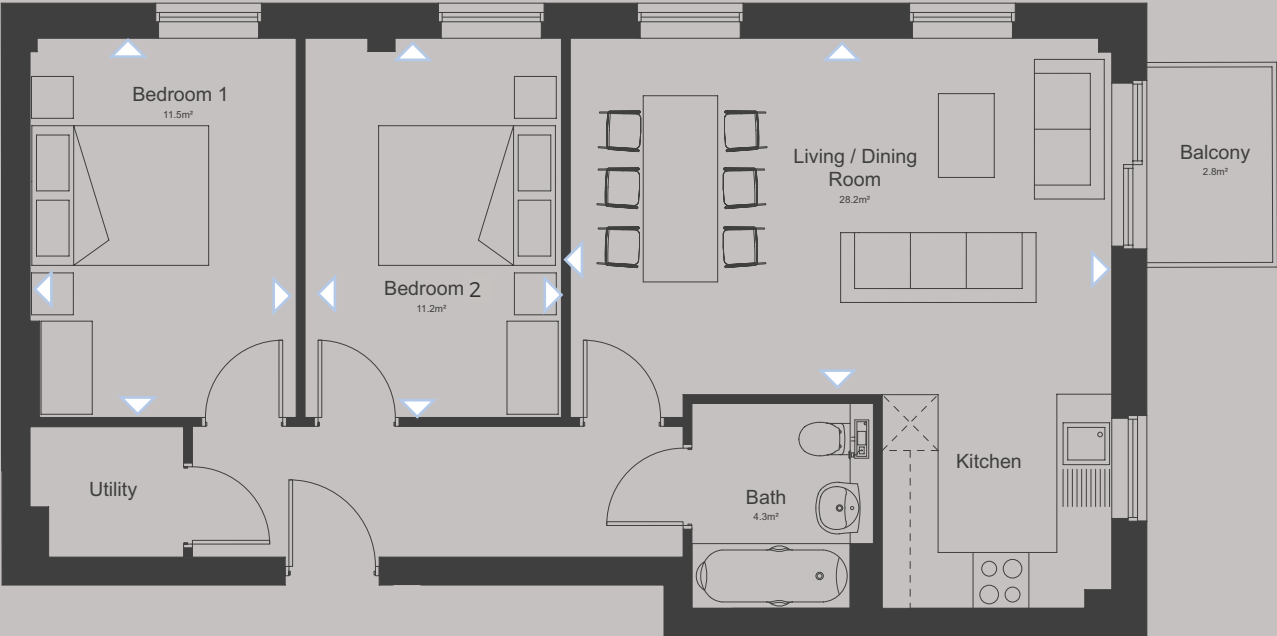
**Living/Dining**  
2950mm x 5378mm  
9'8" x 17'8"  
**Bedroom One**  
2751mm x 4183mm  
9'0" x 13'9"

Floor Plans

First Floor

The Piazza  
No. 10

1 Bedroom



FLAT	SQFT	M2
Total Area	717	66
Living/Kitchen/Dining	303	28
Bedroom 1	124	11
Bedroom 2	124	11
Bath	46	4
Balcony	30	3

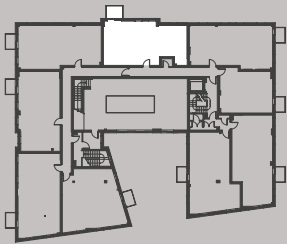
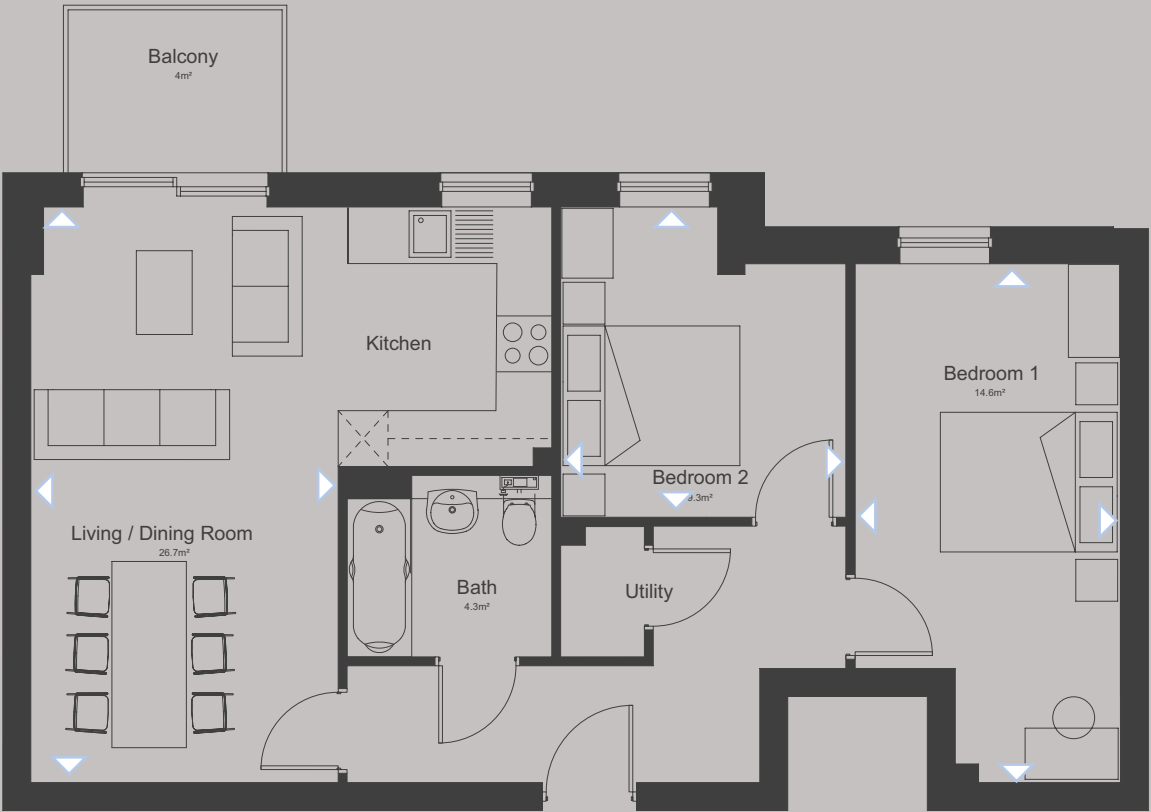
**Living/Dining**  
3842mm x 5818mm  
12'7" x 19'1"  
**Bedroom One**  
4083mm x 2860mm  
13'5" x 9'5"  
**Bedroom Two**  
4083mm x 2755mm  
13'5" x 9'0"



Floor Plans

First Floor

The Piazza  
No. 11  
2 Bedroom



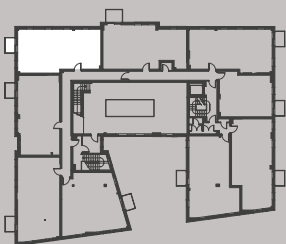
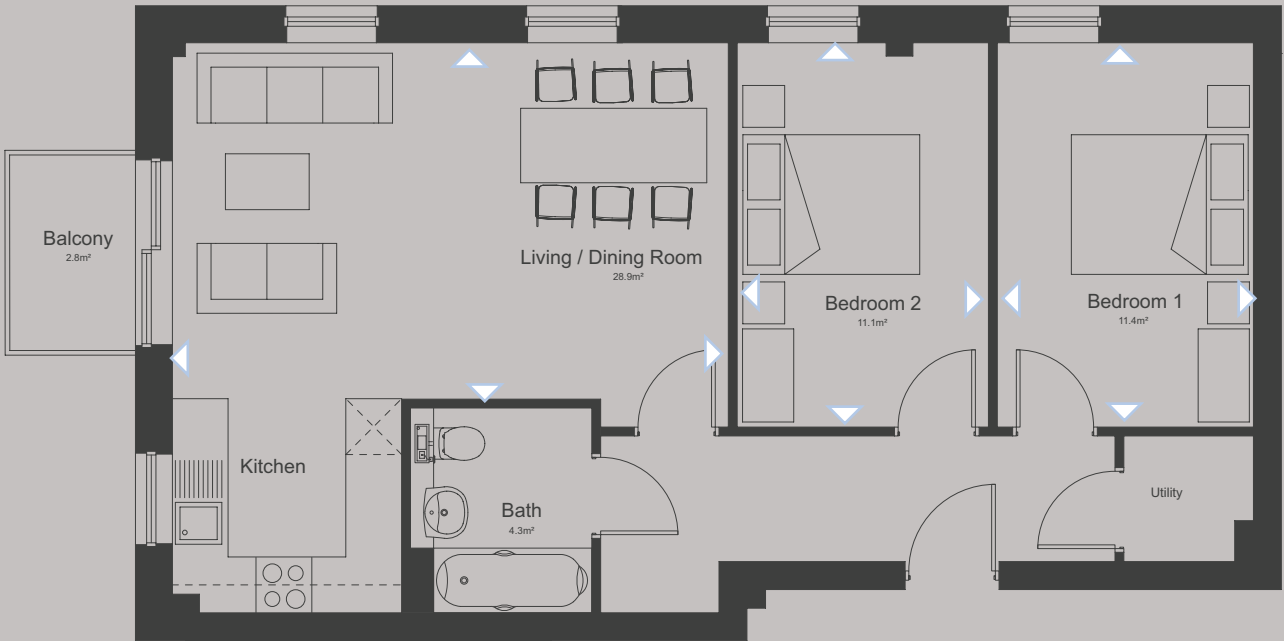
FLAT	SQFT	M2
Total Area	720	67
Living/Kitchen/Dining	287	27
Bedroom 1	157	14
Bedroom 2	100	9
Bath	46	4
Balcony	43	4

<b>Living/Dining</b>
6183mm x 3303mm
20'3" x 10'10"
<b>Bedroom One</b>
5573mm x 2850mm
18'3" x 9'4"
<b>Bedroom Two</b>
3333mm x 3065mm
10'11" x 10'1"

Floor Plans

First Floor

The Piazza  
No. 12  
2 Bedroom



FLAT	SQFT	M2
Total Area	726	67
Living/Kitchen/Dining	311	29
Bedroom 1	123	11
Bedroom 2	119	11
Bath	46	4
Balcony	30	3

<b>Living/Dining</b>
3828mm x 5973mm
12'7" x 19'7"
<b>Bedroom One</b>
4128mm x 2752mm
13'7" x 9'0"
<b>Bedroom Two</b>
4128mm x 2700mm
13'7" x 8'10"

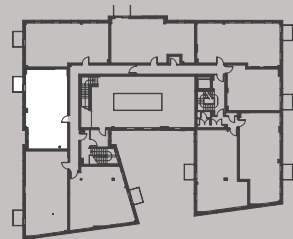
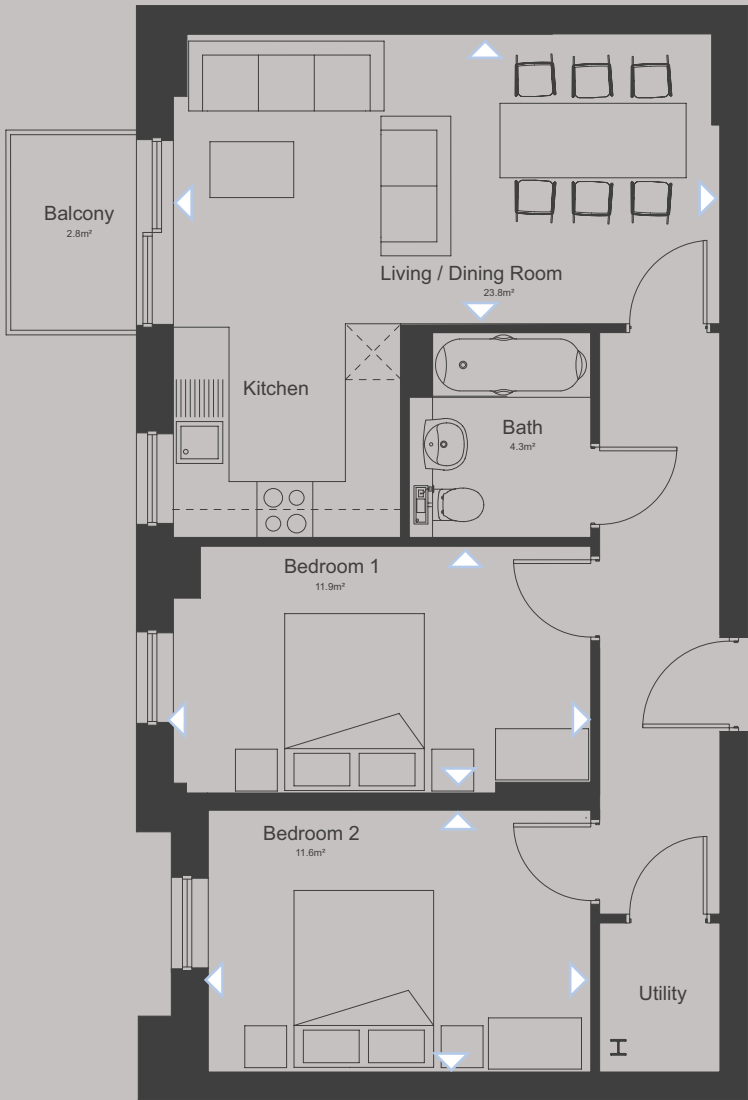


Floor Plans

First Floor

The Piazza  
No. 13

2 Bedroom



FLAT	SQFT	M2
Total Area	688	64
Living/Kitchen/Dining	256	24
Bedroom 1	128	12
Bedroom 2	125	11
Bath	46	4
Balcony	30	3

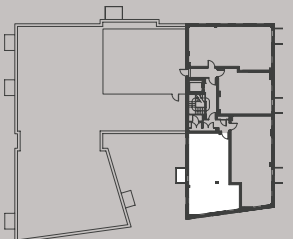
**Living/Dining**  
3113mm x 5873mm  
10'3" x 19'3"  
**Bedroom One**  
2650mm x 4485mm  
8'8" x 14'9"  
**Bedroom Two**  
2811mm x 4110mm  
9'3" x 13'6"

Floor Plans

Second Floor

The Piazza  
No. 14

2 Bedroom



FLAT	SQFT	M2
Total Area	732	68
Living/Kitchen/Dining	274	25
Bedroom 1	141	13
Bedroom 2	130	12
Bath	46	4
Balcony	30	3

**Living/Dining**  
5860mm x 3760mm  
19'3" x 12'4"  
**Bedroom One**  
4098mm x 3241mm  
13'5" x 10'8"  
**Bedroom Two**  
3172mm x 4435mm  
10'5" x 14'7"

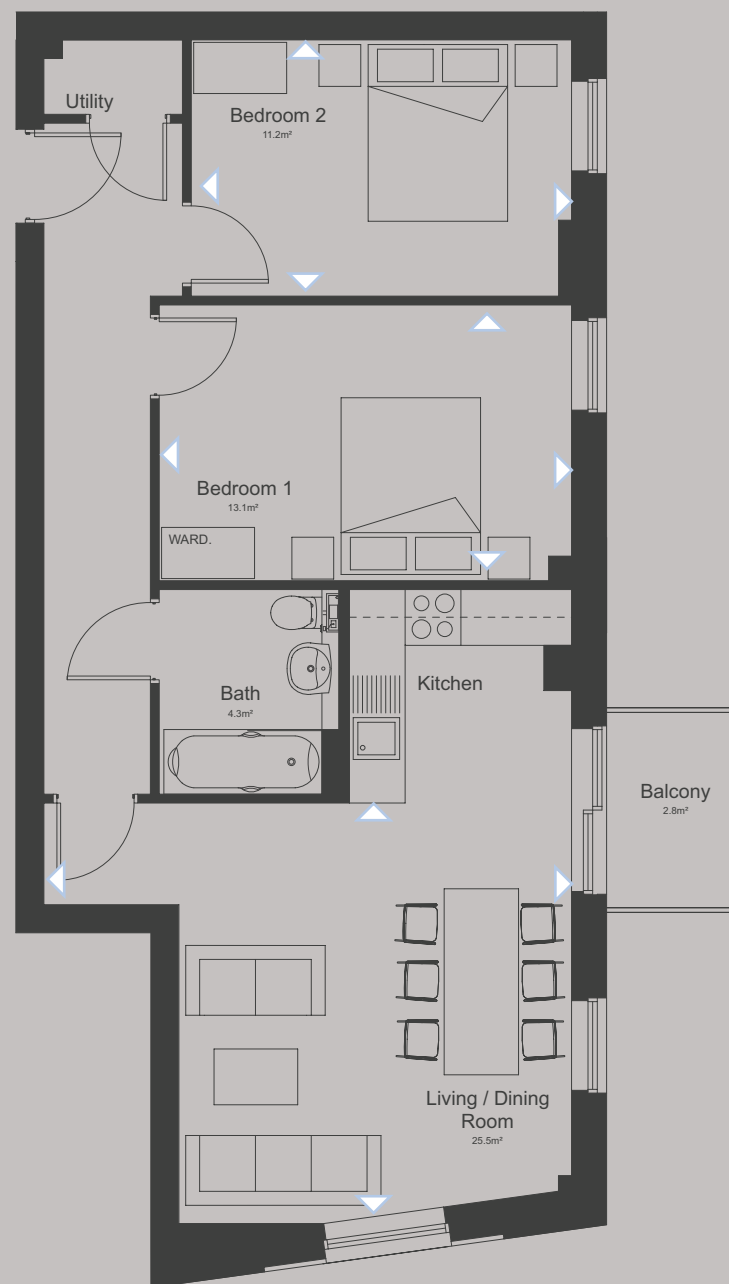


Floor Plans

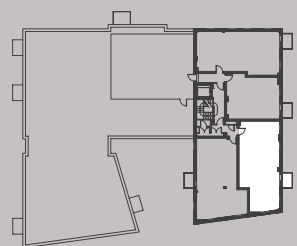
Secomd Floor

The Piazza  
No. 15

2 Bedroom



**Living/Dining**  
4521mm x 4248mm  
14'10" x 13'11"  
**Bedroom One**  
2755mm x 4090mm  
9'0" x 13'5"  
**Bedroom Two**  
2965mm x 4435mm  
9'9" x 14'7"



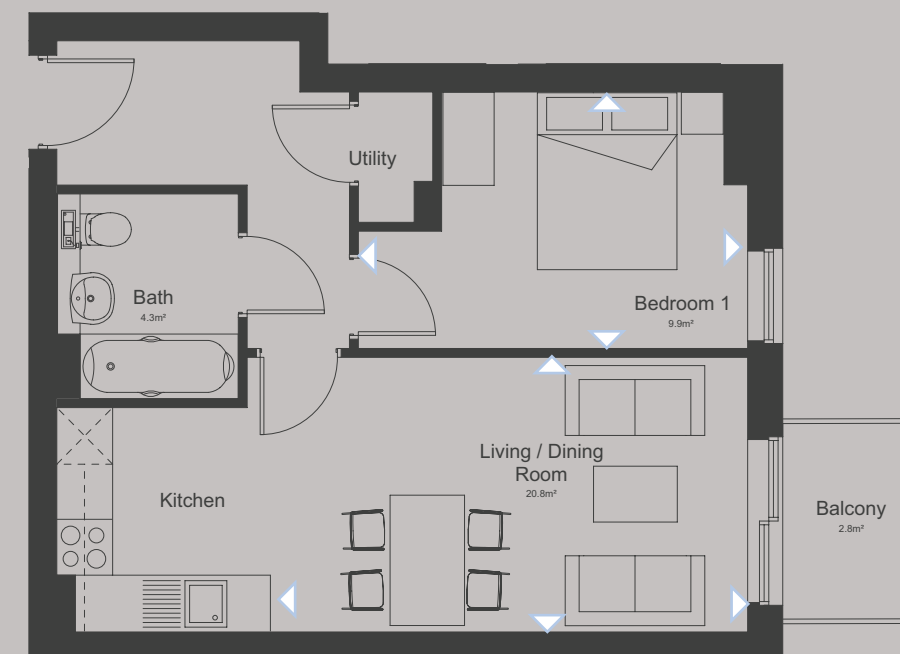
FLAT	SQFT	M2
Total Area	714	66
Living/Kitchen/Dining	274	25
Bedroom 1	141	13
Bedroom 2	120	11
Bath	46	4
Balcony	30	3

Floor Plans

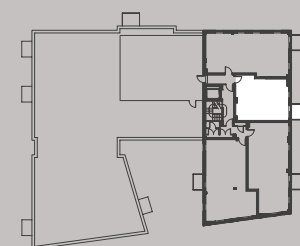
Secomd Floor

The Piazza  
No. 16

1 Bedroom



**Living/Dining**  
2950mm x 5128mm  
9'8" x 16'10"  
**Bedroom One**  
2755mm x 4183mm  
9'0" x 13'9"



FLAT	SQFT	M2
Total Area	472	44
Living/Kitchen/Dining	22	21
Bedroom 1	105	10
Bath	46	4
Balcony	30	3

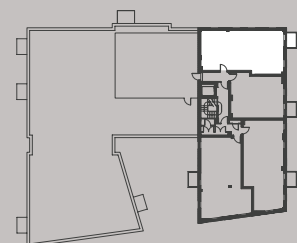
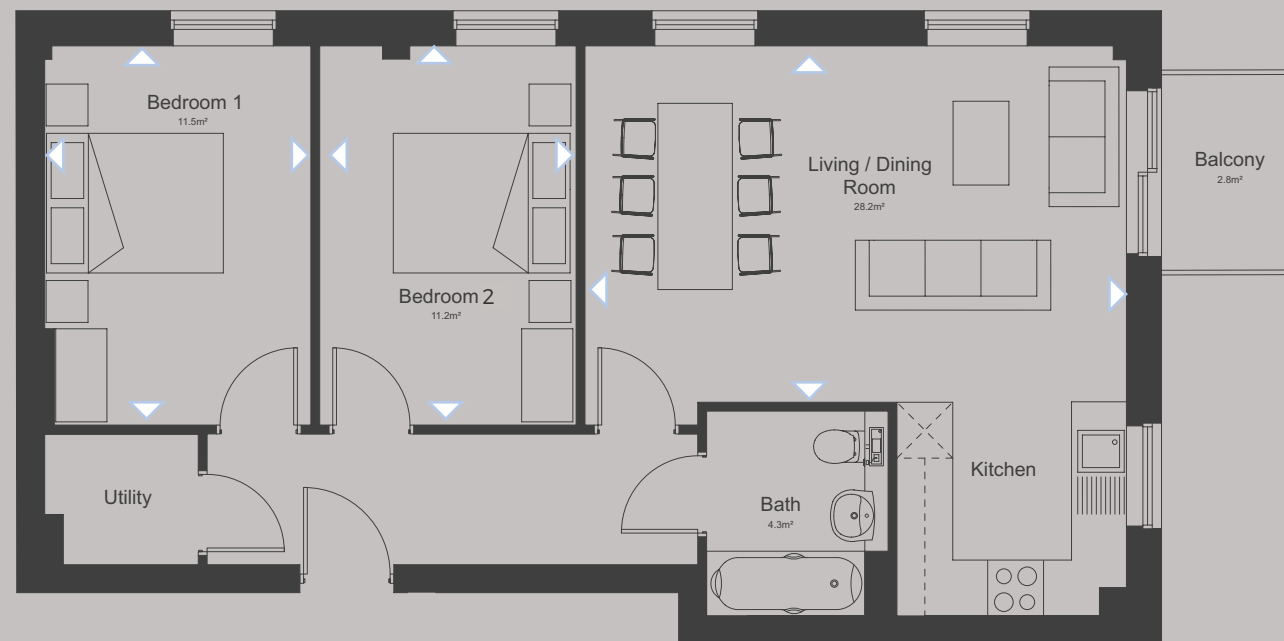


Floor Plans

Second Floor

The Piazza  
No. 17

2 Bedroom



FLAT	SQFT	M2
Total Area	717	66
Living/Kitchen/Dining	303	28
Bedroom 1	124	11
Bedroom 2	120	11
Bath	46	4
Balcony	30	3

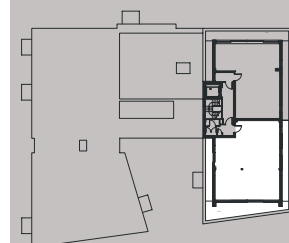
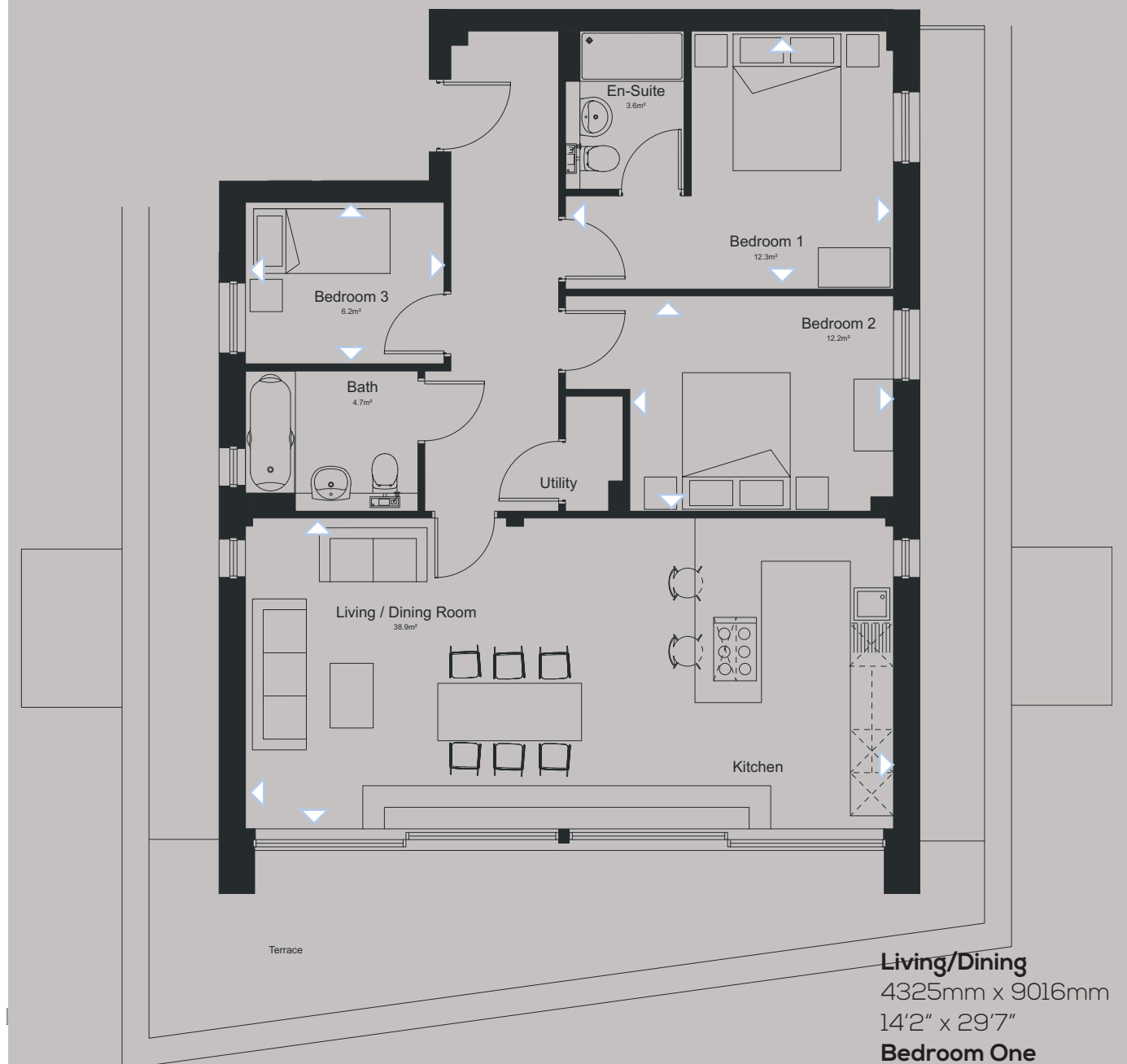
<b>Living/Dining</b>
3828mm x 5818mm
12'7" x 19'1"
<b>Bedroom One</b>
4073mm x 2858mm
13'4" x 9'5"
<b>Bedroom Two</b>
4073mm x 2755mm
13'4" x 9'0"

Floor Plans

Third Floor

The Piazza  
No. 18

3 Bedroom



FLAT	SQFT	M2
Total Area	997	92
Living/Kitchen/Dining	419	39
Bedroom 1	132	12
Bedroom 2	131	12
Bedroom 3	67	6
Bath	50	5

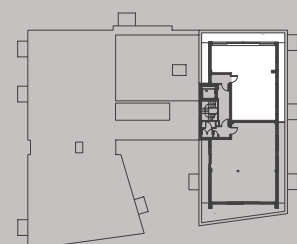
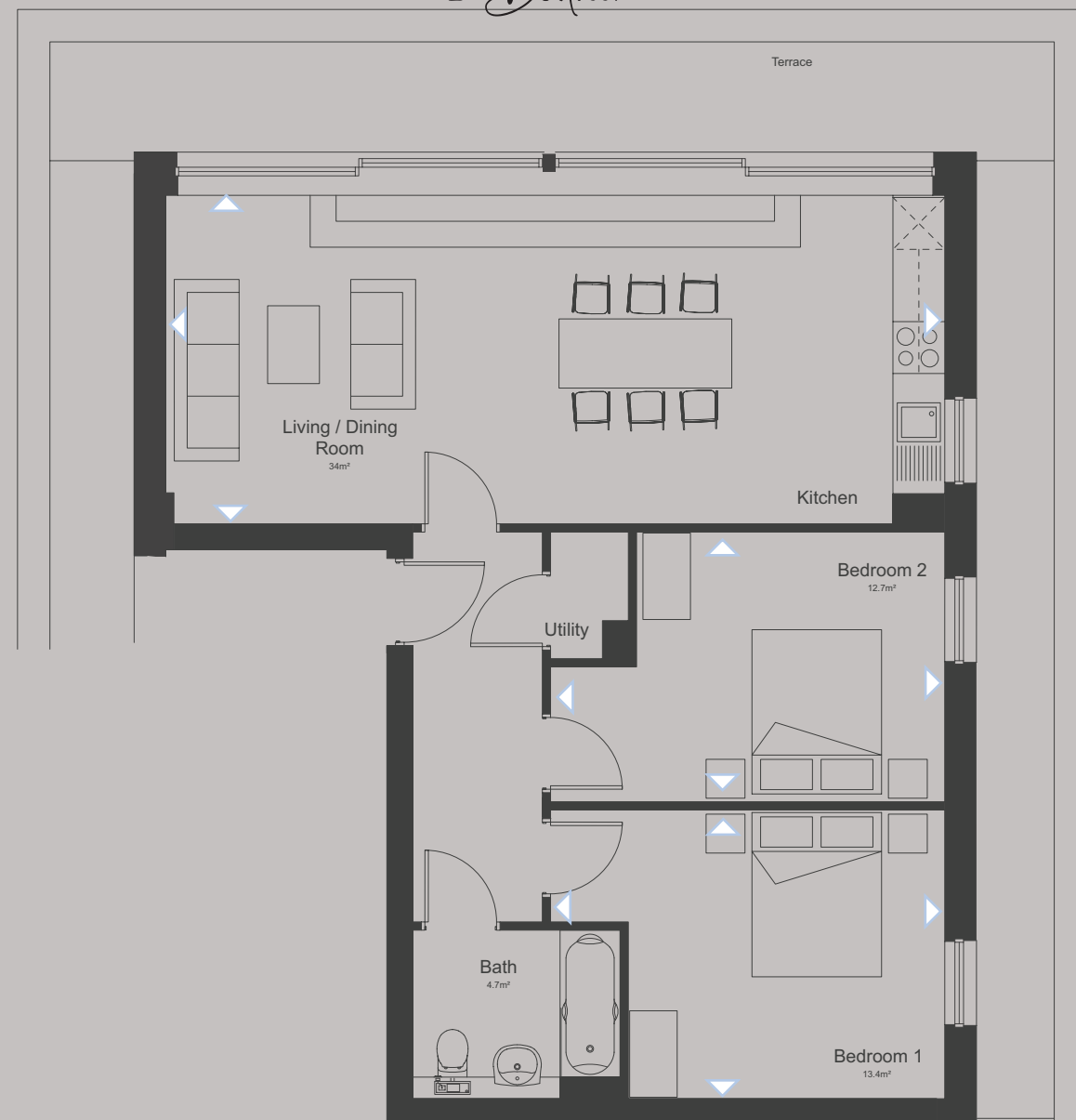
<b>Living/Dining</b>
4325mm x 9016mm
14'2" x 29'7"
<b>Bedroom One</b>
3590mm x 4562mm
11'9" x 15'0"
<b>Bedroom Two</b>
2995mm x 4563mm
9'10" x 15'0"
<b>Bedroom Three</b>
2247mm x 2763mm
17'4" x 9'1"



Third Floor

# The Piazza No. 19

2 Bedroom



FLAT	SQFT	M2
Total Area	804	75
Living/Kitchen/Dining	366	34
Bedroom 1	144	13
Bedroom 2	137	13
Bath	50	5

## Living/Dining

3800mm x 9016mm  
12'6" x 29'7"

## Bedroom One

3440mm x 4563mm  
10'11" x 15'0"

## Bedroom Two

3120mm x 4563mm  
10'3" x 15'0"

## FLOOR PLANS

### The Colthurst EAST

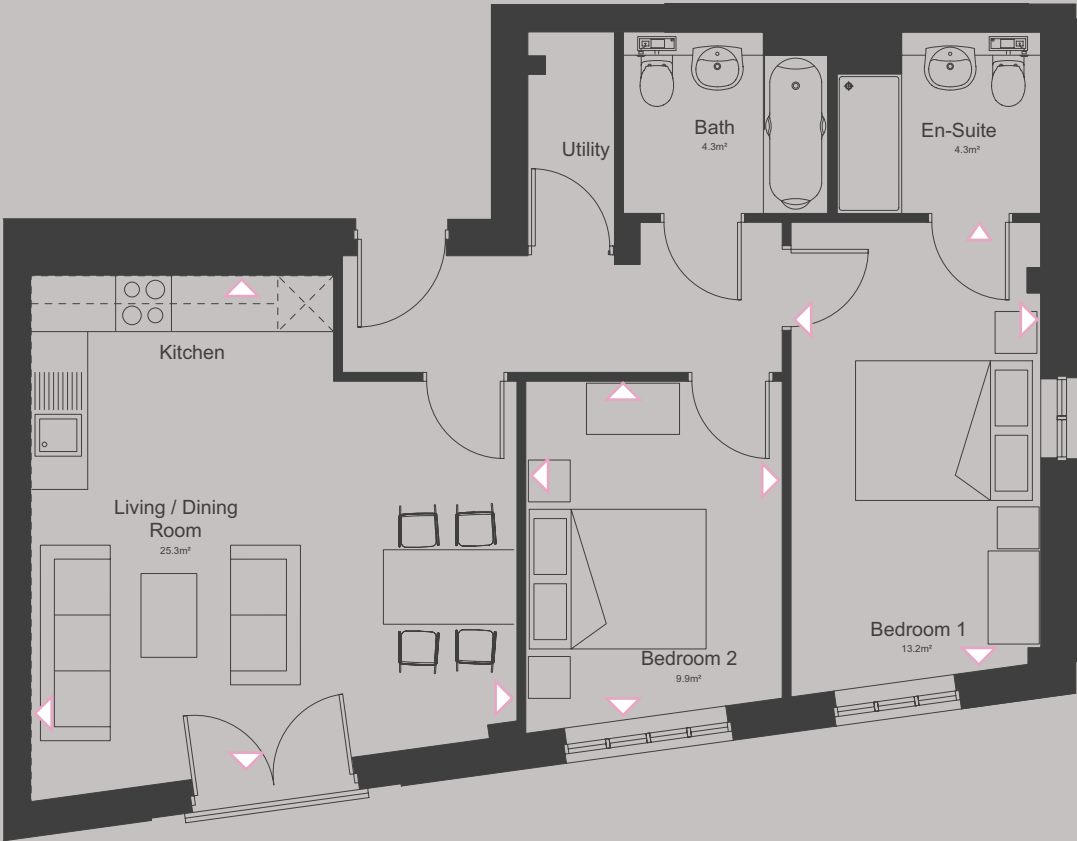


Floor Plans

First Floor

The Colthurst  
No. 01

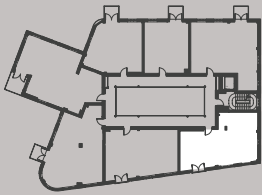
2 Bedroom



**Living/Dining**  
5291mm x 5220mm  
17'4" x 17'2"

**Bedroom One**  
4747mm x 2683mm  
15'7" x 8'10"

**Bedroom Two**  
3607mm x 2755mm  
11'0" x 9'0"



FLAT	SQFT	M2
Total Area	726	67
Living/Kitchen/Dining	272	25
Bedroom 1	142	13
En-suite	46	4
Bedroom 2	106	10
Bath	46	4

Floor Plans

First Floor

The Colthurst  
No. 02

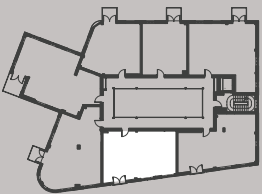
2 Bedroom



**Living/Dining**  
4943mm x 4385mm  
16'3" x 14'5"

**Bedroom One**  
3609mm x 2810mm  
11'10" x 9'3"

**Bedroom Two**  
4190mm x 2790mm  
13'0" x 9'2"



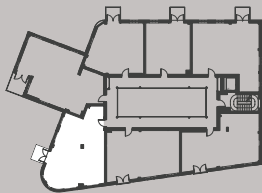
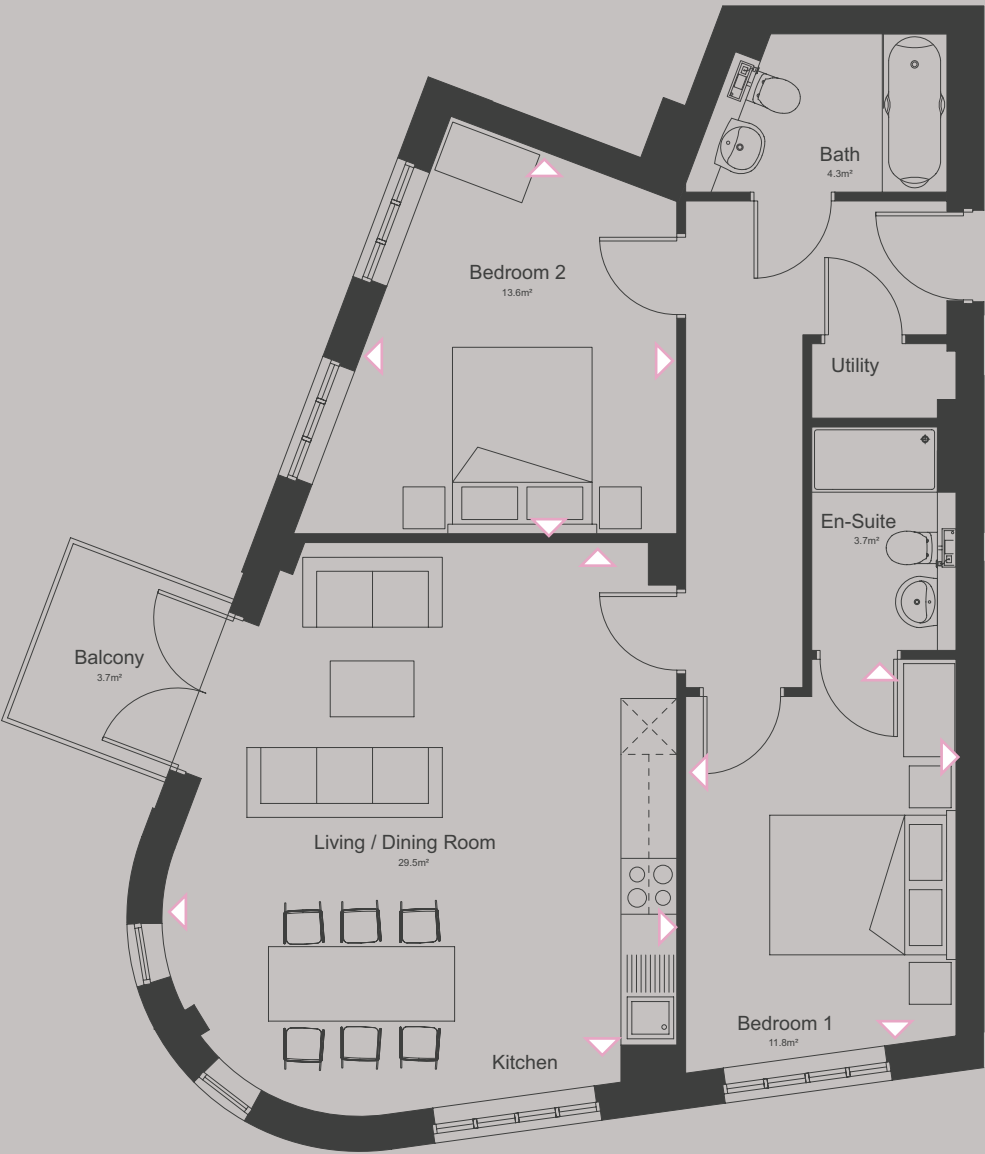
FLAT	SQFT	M2
Total Area	717	66
Living/Kitchen/Dining	234	22
Bedroom 1	147	14
En-suite	36	3
Bedroom 2	139	13
Bath	44	4



Floor Plans

First Floor

The Colthurst  
No. 03  
2 Bedroom



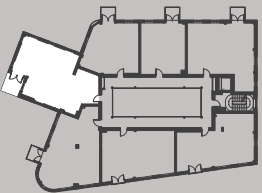
FLAT	SQFT	M2
Total Area	808	75
Living/Kitchen/Dining	317	29
Bedroom 1	127	12
En-suite	40	4
Bedroom 2	146	13
Bath	43	4
Balcony	43	4

**Living/Dining**  
5397mm x 5100mm  
17'8" x 16'9"  
**Bedroom One**  
4047mm x 2905mm  
13'3" x 9'6"  
**Bedroom Two**  
4022mm x 3274mm  
13'2" x 10'9"

Floor Plans

First Floor

The Colthurst  
No. 04  
2 Bedroom



FLAT	SQFT	M2
Total Area	878	81
Living/Kitchen/Dining	278	26
Bedroom 1	144	13
Dressing Room	69	6
En-suite	46	4
Bedroom 2	119	11
Bath	50	4
Balcony	69	6

**Living/Dining**  
4097mm x 5053mm  
16'7" x 16'7"  
**Bedroom One**  
4488mm x 2898mm  
14'9" x 9'6"  
**Bedroom Two**  
3042mm x 3663mm  
10'0" x 12'0"

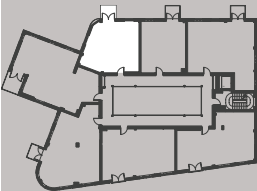
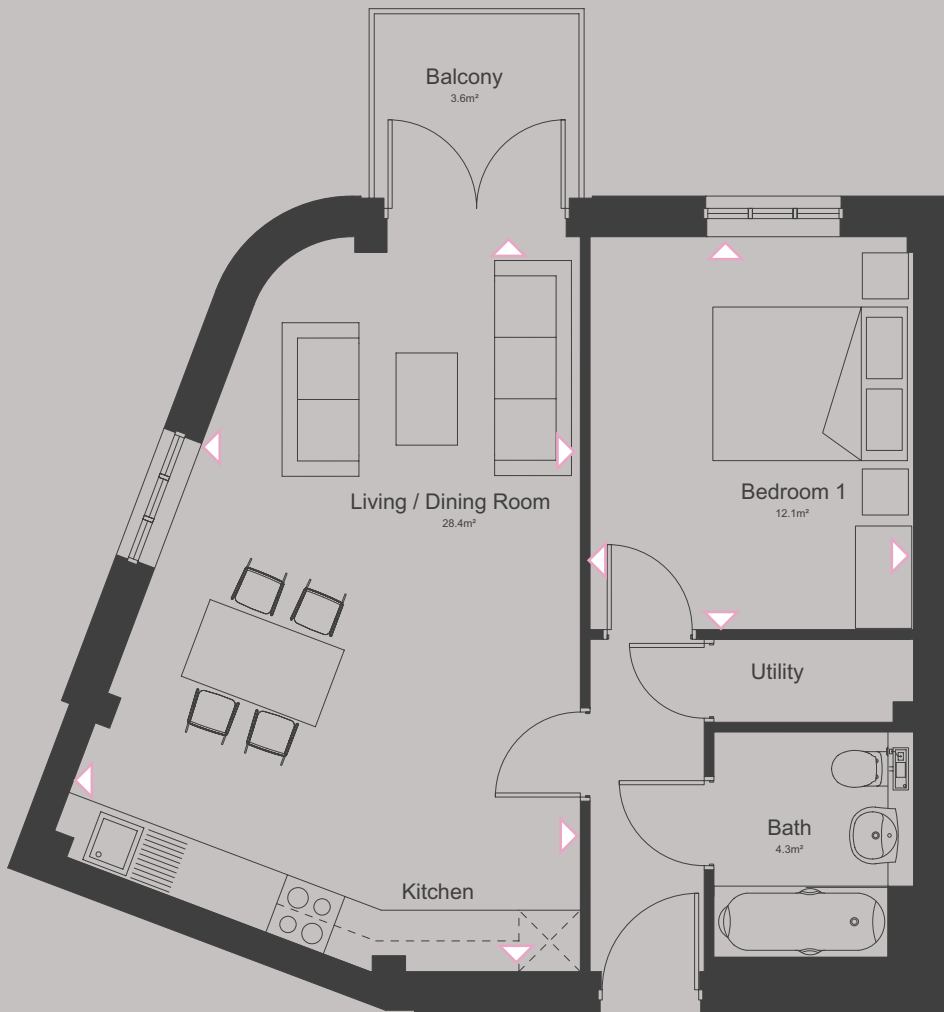


Floor Plans

First Floor

The Colthurst  
No. 05

1 Bedroom



FLAT	SQFT	M2
Total Area	551	51
Living/Kitchen/Dining	306	28
Bedroom 1	130	12
Bath	46	4
Balcony	39	3

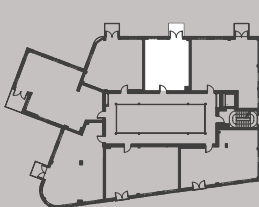
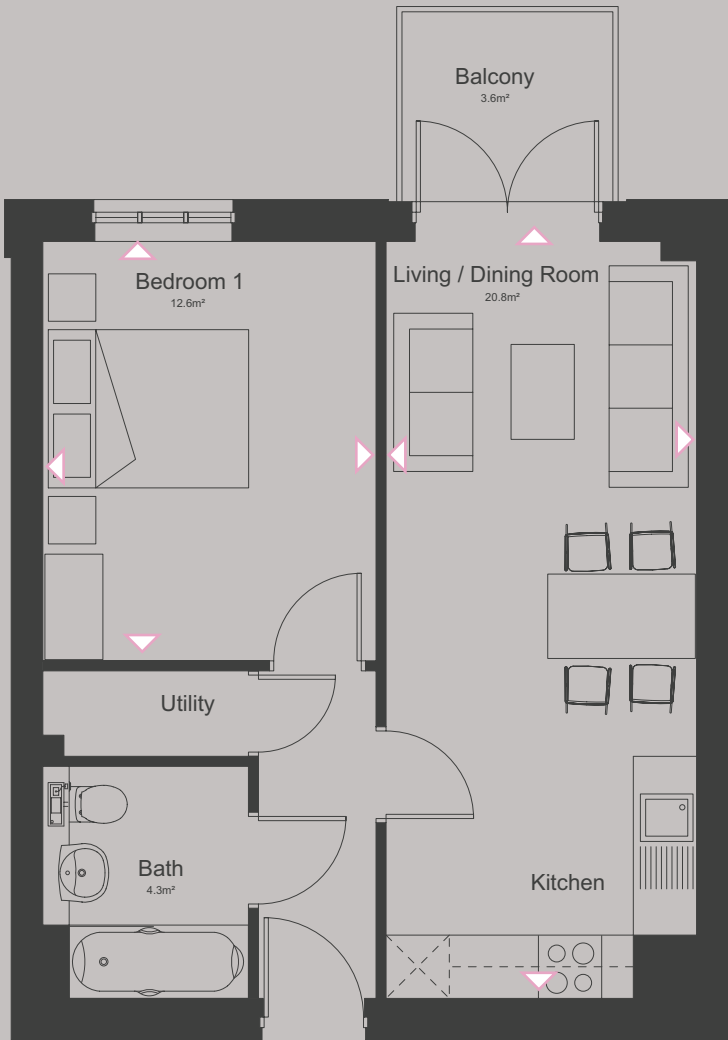
**Living/Dining**  
7176mm x 5135mm  
23'7" x 16'10"  
7176mm x 3928mm  
23'7" x 12'11"  
**Bedroom One**  
3836mm x 3160mm  
12'7" x 10'4"

Floor Plans

First Floor

The Colthurst  
No. 06

1 Bedroom



FLAT	SQFT	M2
Total Area	471	44
Living/Kitchen/Dining	224	21
Bedroom 1	135	12
Bath	46	4
Balcony	39	3

**Living/Dining**  
7176mm x 2945mm  
23'7" x 9'8"  
**Bedroom One**  
3976mm x 3160mm  
131" x 10'4"



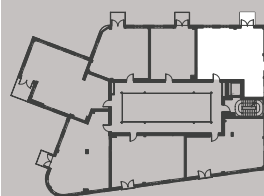
Floor Plans

First Floor

The Colthurst  
No. 07  
2 Bedroom



**Living/Dining**  
9645mm x 3308mm  
31'8" x 10'10"  
**Bedroom One**  
3976mm x 2925mm  
13'1" x 9'7"  
**Bedroom Two**  
3976mm x 2924mm  
13'1" x 9'7"



FLAT	SQFT	M2
Total Area	789	73
Living/Kitchen/Dining	320	30
Bedroom 1	125	11
Bedroom 2	125	11
Bath	46	4
Shower	36	3
Balcony	39	3

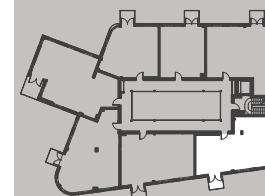
Floor Plans

Second Floor

The Colthurst  
No. 08  
2 Bedroom



**Living/Dining**  
5291mm x 5220mm  
17'4" x 17'2"  
**Bedroom One**  
4747mm x 2683mm  
15'7" x 8'10"  
**Bedroom Two**  
3607mm x 2755mm  
11'0" x 9'0"



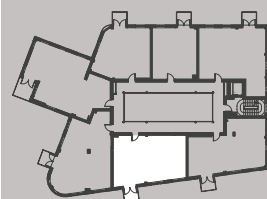
FLAT	SQFT	M2
Total Area	726	67
Living/Kitchen/Dining	272	25
Bedroom 1	142	13
En-suite	46	4
Bedroom 2	106	10
Bath	46	4
Balcony	40	4



Floor Plans

Second Floor

The Colthurst  
No. 09  
2 Bedroom



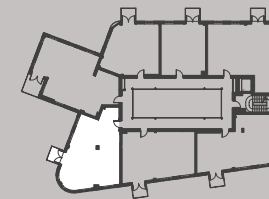
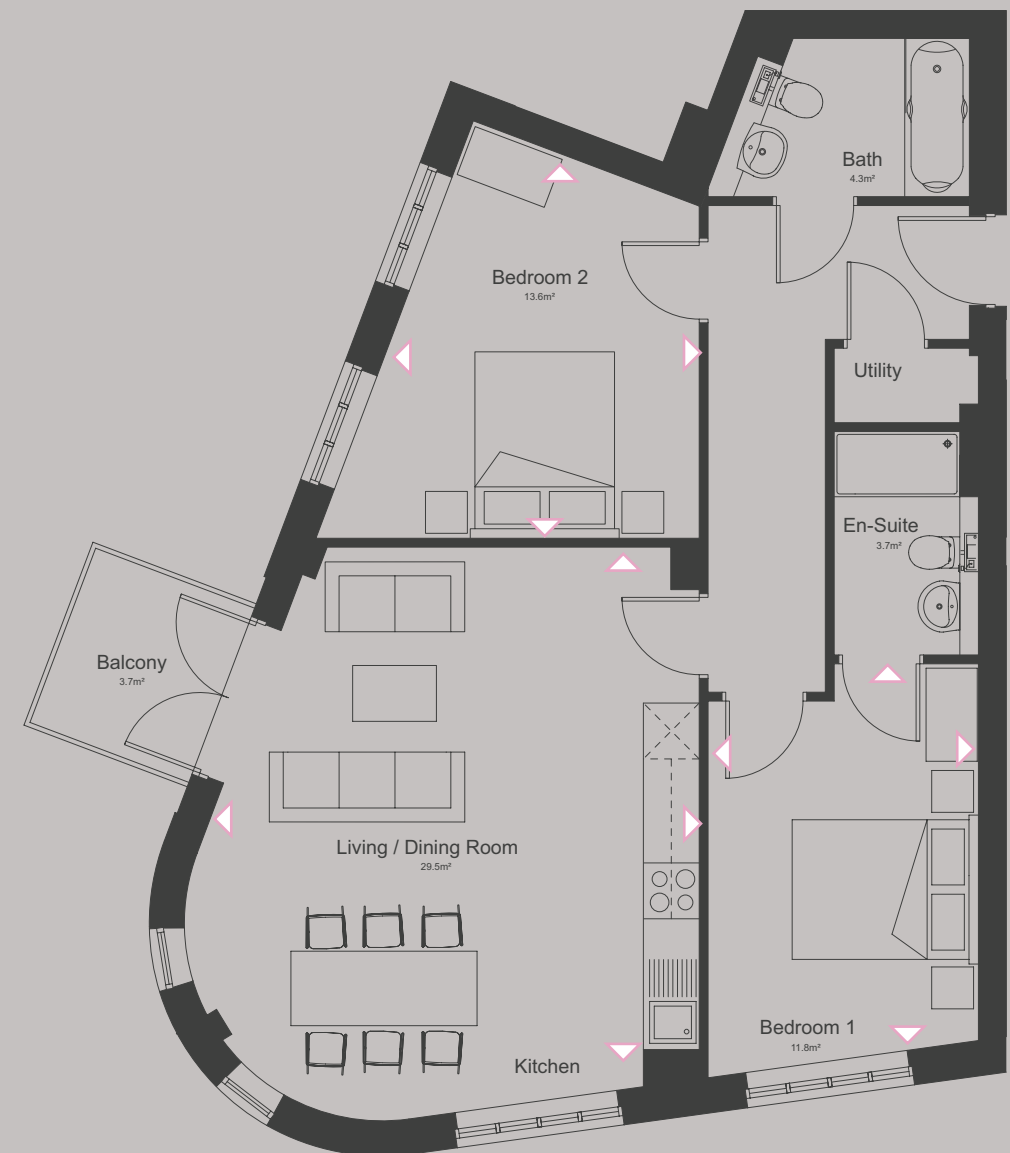
FLAT	SQFT	M2
Total Area	717	66
Living/Kitchen/Dining	317	30
Bedroom 1	127	12
En-suite	40	4
Bedroom 2	146	13
Bath	43	4
Balcony	43	4

**Living/Dining**  
4943mm x 4385mm  
16'3" x 14'5"  
**Bedroom One**  
3609mm x 2810mm  
11'10" x 9'3"  
**Bedroom Two**  
4190mm x 2790mm  
13'0" x 9'2"

Floor Plans

Second Floor

The Colthurst  
No. 10  
2 Bedroom



FLAT	SQFT	M2
Total Area	808	75
Living/Kitchen/Dining	234	22
Bedroom 1	147	14
En-suite	36	3
Bedroom 2	138	13
Bath	44	4
Balcony	43	4

**Living/Dining**  
5397mm x 5100mm  
17'8" x 16'9"  
**Bedroom One**  
4047mm x 2905mm  
13'3" x 9'6"  
**Bedroom Two**  
4022mm x 3274mm  
13'2" x 10'9"



Floor Plans

Second Floor

The Colthurst  
No. 11  
2 Bedroom



Living/Dining

4097mm x 5053mm

16'7" x 16'7"

Bedroom One

2898mm x 4488mm

9'6" x 14'9"

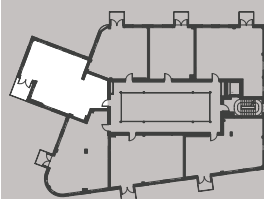
Bedroom Two

3663mm x 3042mm

12'0" x 10'0"

FLAT

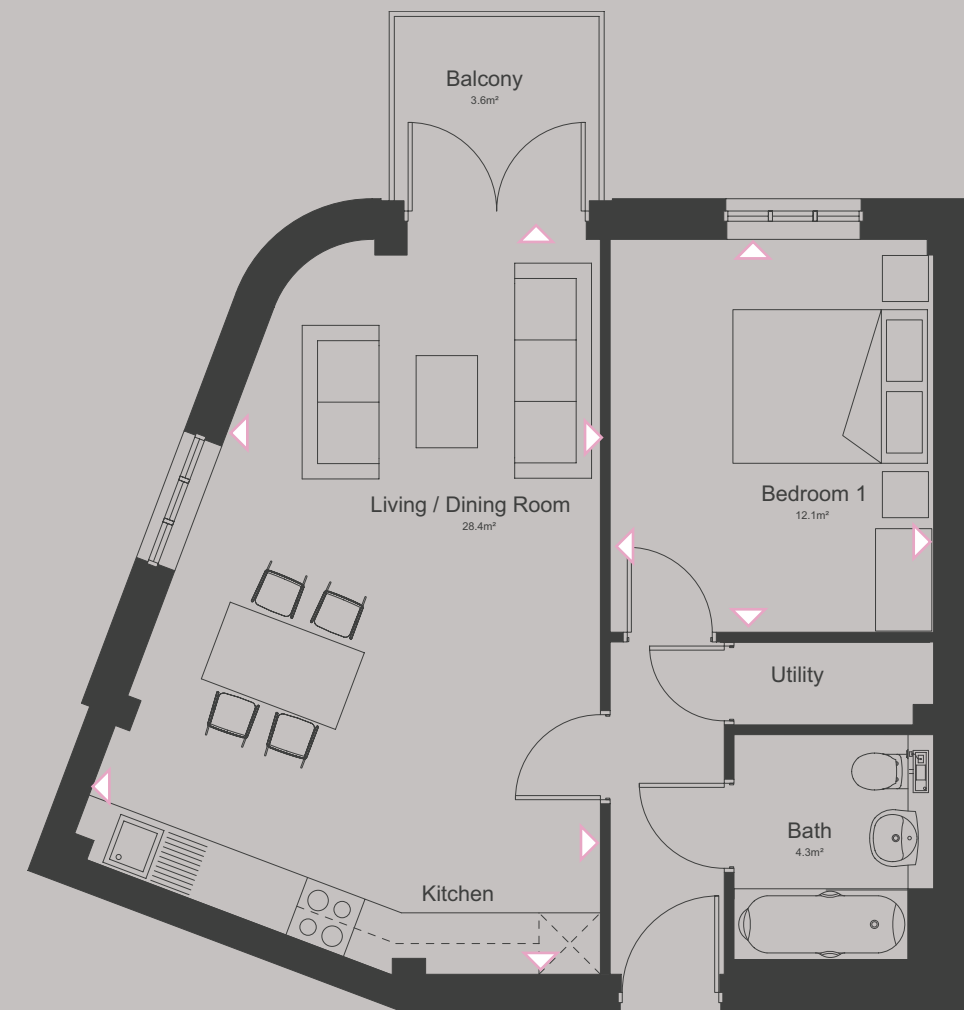
	SQFT	M2
Total Area	878	81
Living/Kitchen/Dining	277	26
Bedroom 1	144	13
Dressing room	69	6
En-suite	46	4
Bedroom 2	119	11
Bath	50	5
Balcony	69	6



Floor Plans

Second Floor

The Colthurst  
No. 12  
1 Bedroom



Living/Dining

7176mm x 5135mm

23'7" x 16'10"

7176mm x 3928mm

23'7" x 12'11"

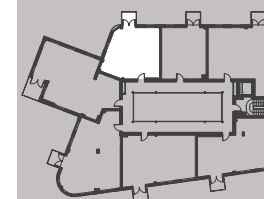
Bedroom One

3836mm x 3160mm

12'7" x 10'4"

FLAT

	SQFT	M2
Total Area	551	51
Living/Kitchen/Dining	306	28
Bedroom 1	130	12
Bath	46	4
Balcony	39	3

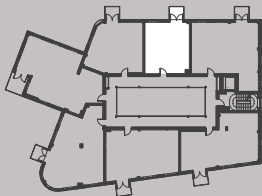




Floor Plans

Second Floor

The Colthurst  
No. 13  
1 Bedroom



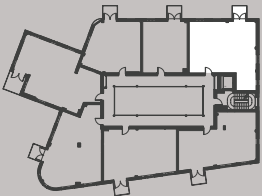
FLAT	SQFT	M2
Total Area	471	44
Living/Kitchen/Dining	224	21
Bedroom 1	135	12
Bath	46	4
Balcony	39	3

<b>Living/Dining</b>
7176mm x 2945mm
23'7" x 9'8"
<b>Bedroom One</b>
3976mm x 3160mm
131" x 10'4"

Floor Plans

Second Floor

The Colthurst  
No. 14  
2 Bedroom



FLAT	SQFT	M2
Total Area	789	73
Living/Kitchen/Dining	320	30
Bedroom 1	125	11
Bedroom 2	125	11
Bath	46	4
Shower	36	3
Balcony	39	3

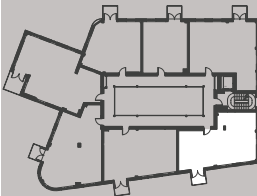
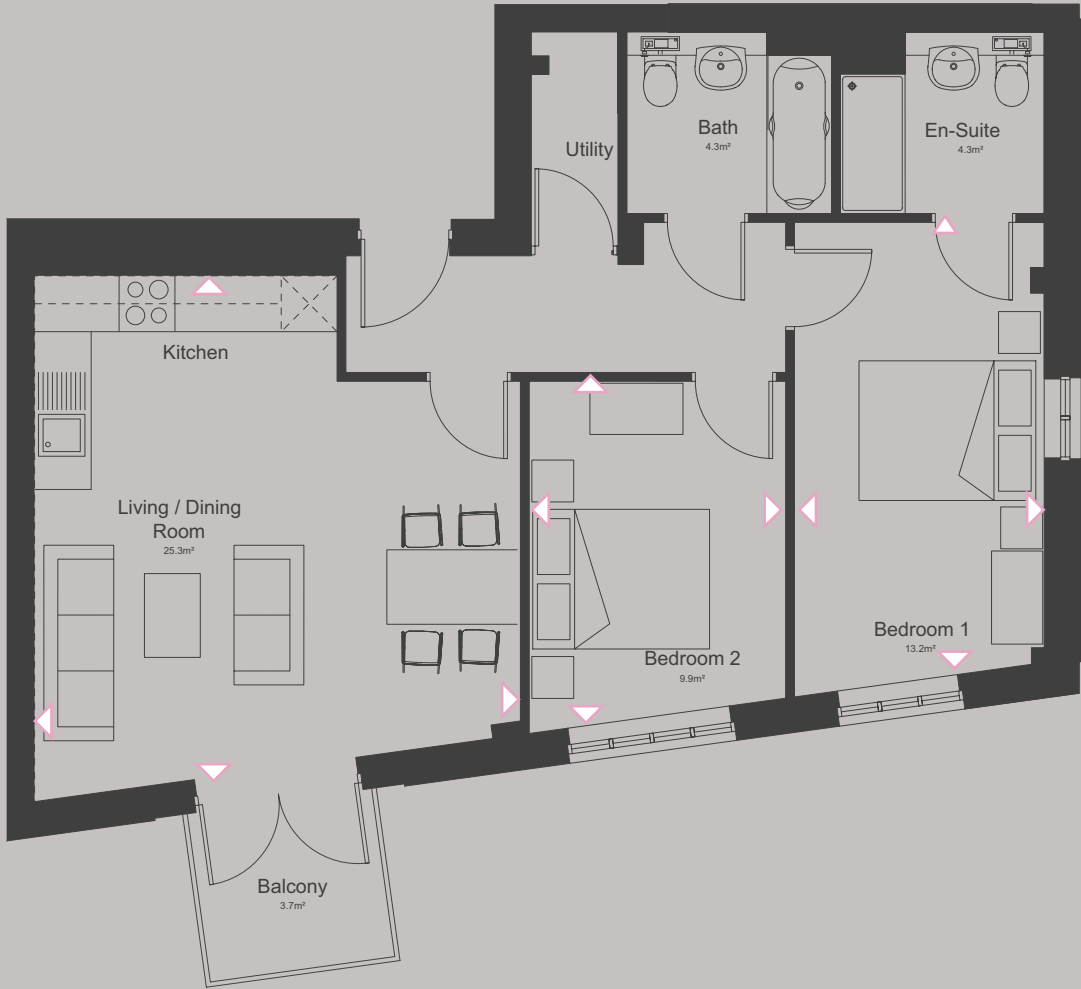
<b>Living/Dining</b>
9645mm x 3308mm
31'8" x 10'10"
<b>Bedroom One</b>
3976mm x 2925mm
131" x 9'7"
<b>Bedroom Two</b>
3976mm x 2924mm
131" x 9'7"



Floor Plans

Third Floor

The Colthurst  
No. 15  
2 Bedroom



FLAT	SQFT	M2
Total Area	726	67
Living/Kitchen/Dining	272	25
Bedroom 1	142	13
En-suite	46	4
Bedroom 2	106	10
Bath	43	4
Balcony	43	4

**Living/Dining**  
5291mm x 5220mm  
17'4" x 17'2"

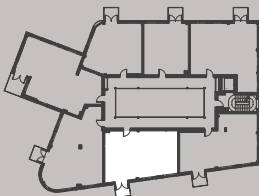
**Bedroom One**  
4747mm x 2683mm  
15'7" x 8'10"

**Bedroom Two**  
3607mm x 2755mm  
11'0" x 9'0"

Floor Plans

Third Floor

The Colthurst  
No. 16  
2 Bedroom



FLAT	SQFT	M2
Total Area	717	66
Living/Kitchen/Dining	234	22
Bedroom 1	147	14
En-suite	36	3
Bedroom 2	139	13
Bath	47	5
Balcony	40	4

**Living/Dining**  
4943mm x 4385mm  
16'3" x 14'5"

**Bedroom One**  
3609mm x 2810mm  
11'10" x 9'3"

**Bedroom Two**  
4190mm x 2790mm  
13'0" x 9'2"

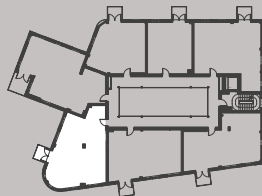
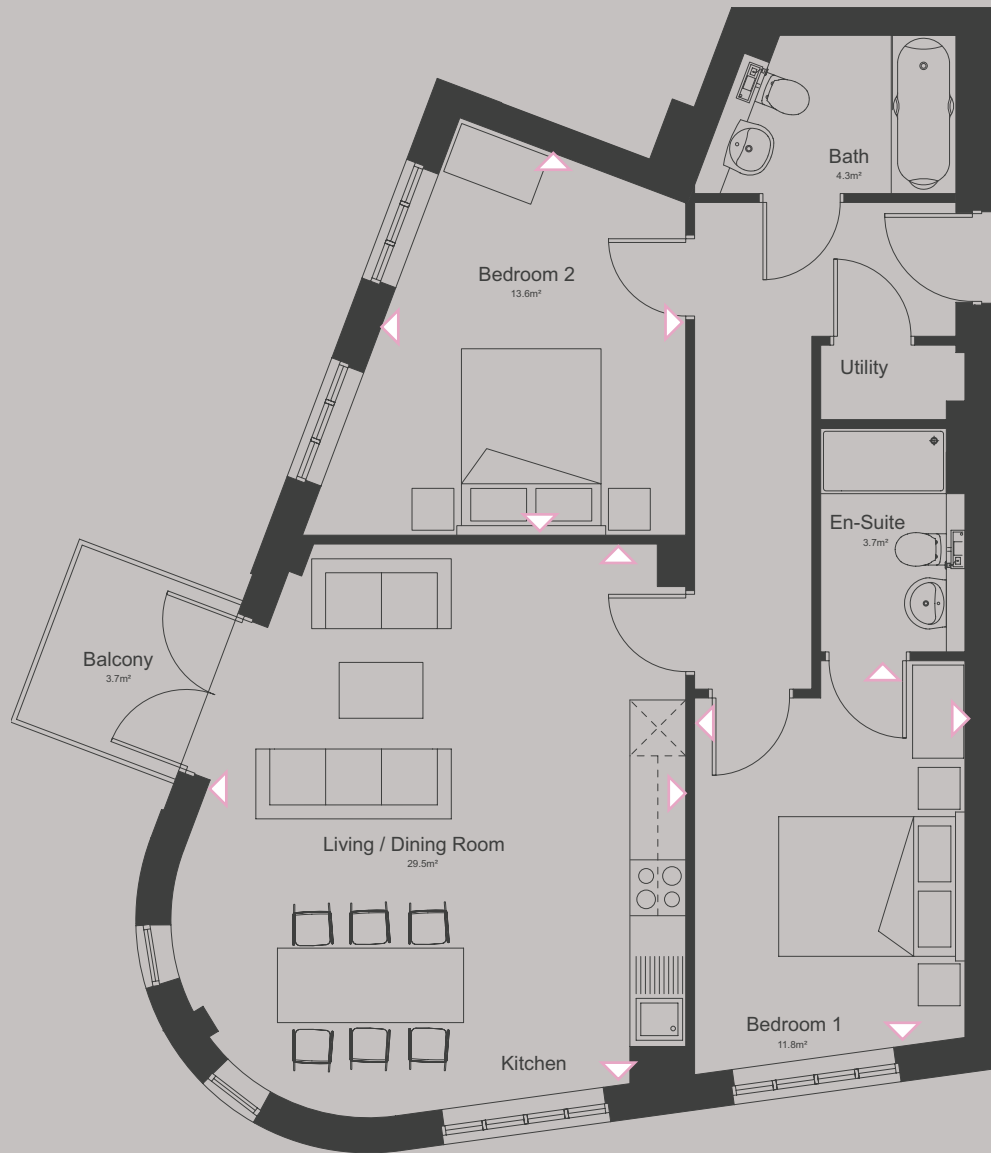


Floor Plans

Third Floor

The Colthurst  
No.17

2 Bedroom



FLAT	SQFT	M2
Total Area	808	75
Living/Kitchen/Dining	317	29
Bedroom 1	127	12
En-suite	40	4
Bedroom 2	146	13
Bath	46	4
Balcony	43	4

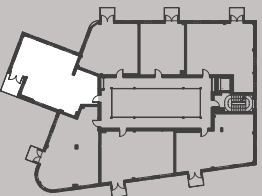
**Living/Dining**  
5397mm x 5100mm  
17'8" x 16'9"  
**Bedroom One**  
4047mm x 2905mm  
13'3" x 9'6"  
**Bedroom Two**  
4022mm x 3274mm  
13'2" x 10'9"

Floor Plans

Third Floor

The Colthurst  
No.18

2 Bedroom



FLAT	SQFT	M2
Total Area	878	81
Living/Kitchen/Dining	278	26
Bedroom 1	144	13
Dressing room	70	6
En-suite	46	4
Bedroom 2	119	11
Bath	506	4
Balcony	69	6

**Living/Dining**  
4097mm x 5053mm  
16'7" x 16'7"  
**Bedroom One**  
2898mm x 4488mm  
9'6" x 14'9"  
**Bedroom Two**  
3662mm x 3042mm  
12'0" x 10'0"

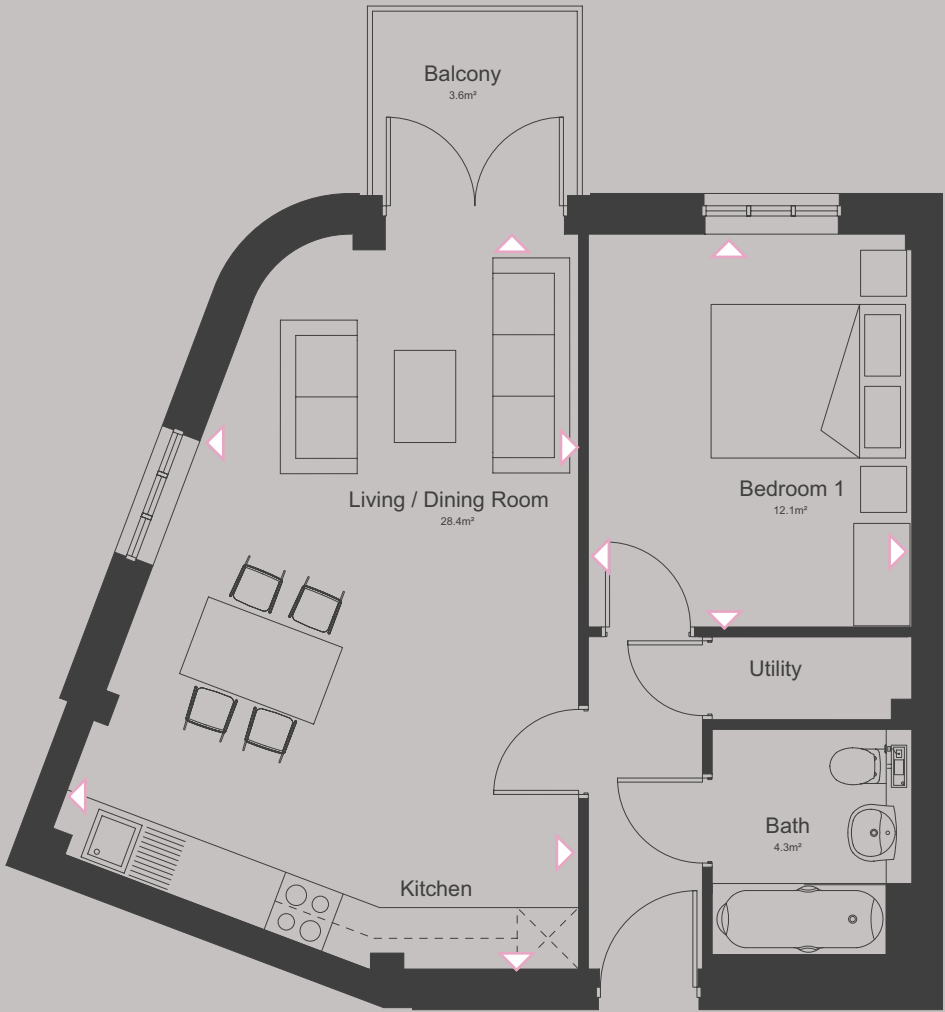


Floor Plans

Third Floor

The Colthurst  
No. 19

1 Bedroom



Living/Dining

7176mm x 5135mm

23'7" x 16'10"

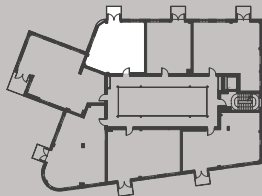
7176mm x 3928mm

23'7" x 12'11"

Bedroom One

3836mm x 3160mm

12'7" x 10'4"



FLAT

Total Area	551	51
Living/Kitchen/Dining	306	28
Bedroom 1	130	12
Bath	47	4
Balcony	39	3

SQFT

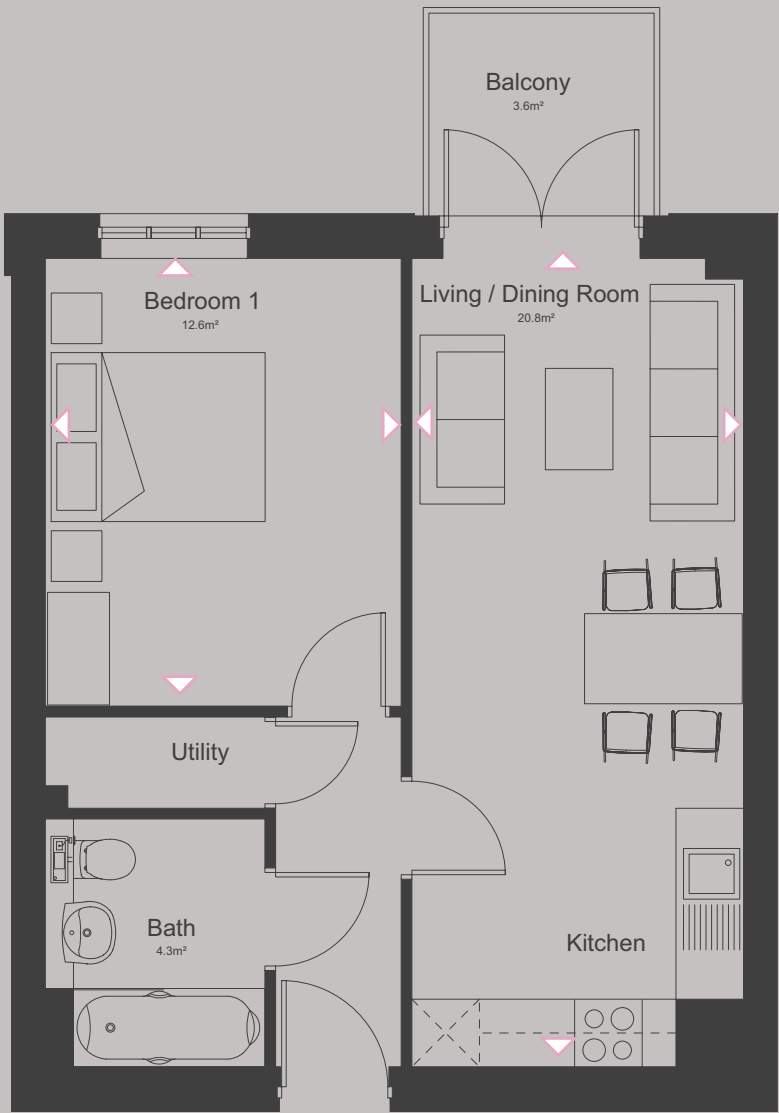
M2

Floor Plans

Third Floor

The Colthurst  
No. 20

1 Bedroom



Living/Dining

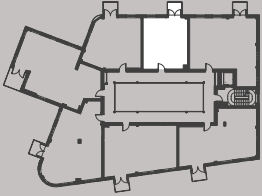
7176mm x 2945mm

23'7" x 9'8"

Bedroom One

3976mm x 3160mm

13'1" x 10'4"



FLAT

Total Area	471	44
Living/Kitchen/Dining	224	21
Bedroom 1	135	12
Bath	46	4
Balcony	39	3

SQFT

M2



Floor Plans

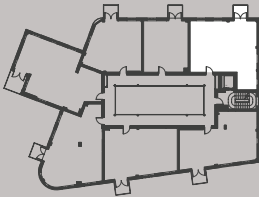
Third Floor

The Colthurst  
No. 21  
2 Bedroom



**Living/Dining**  
9645mm x 3308mm  
31'8" x 10'10"  
**Bedroom One**  
3976mm x 2925mm  
131" x 9'7"  
**Bedroom Two**  
3976mm x 2924mm  
131" x 9'7"

FLAT	SQFT	M2
Total Area	789	73
Living/Kitchen/Dining	320	30
Bedroom 1	125	11
Bedroom 2	125	11
Bath	46	4
Shower	36	3
Balcony	39	3



Floor Plans

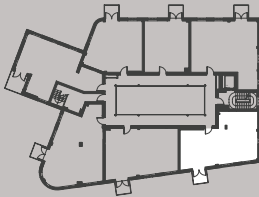
Fourth Floor

The Colthurst  
No. 22  
2 Bedroom



**Living/Dining**  
5291mm x 5220mm  
17'4" x 17'2"  
**Bedroom One**  
4747mm x 2683mm  
15'7" x 8'10"  
**Bedroom Two**  
3607mm x 2755mm  
11'0" x 9'0"

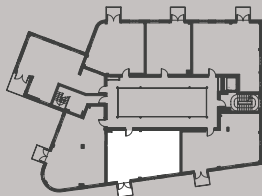
FLAT	SQFT	M2
Total Area	726	67
Living/Kitchen/Dining	272	25
Bedroom 1	142	13
En-suite	46	4
Bedroom 2	106	10
Bath	46	4
Balcony	39	3



Floor Plans

Fourth Floor

The Colthurst  
No. 23  
2 Bedroom



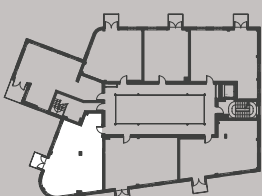
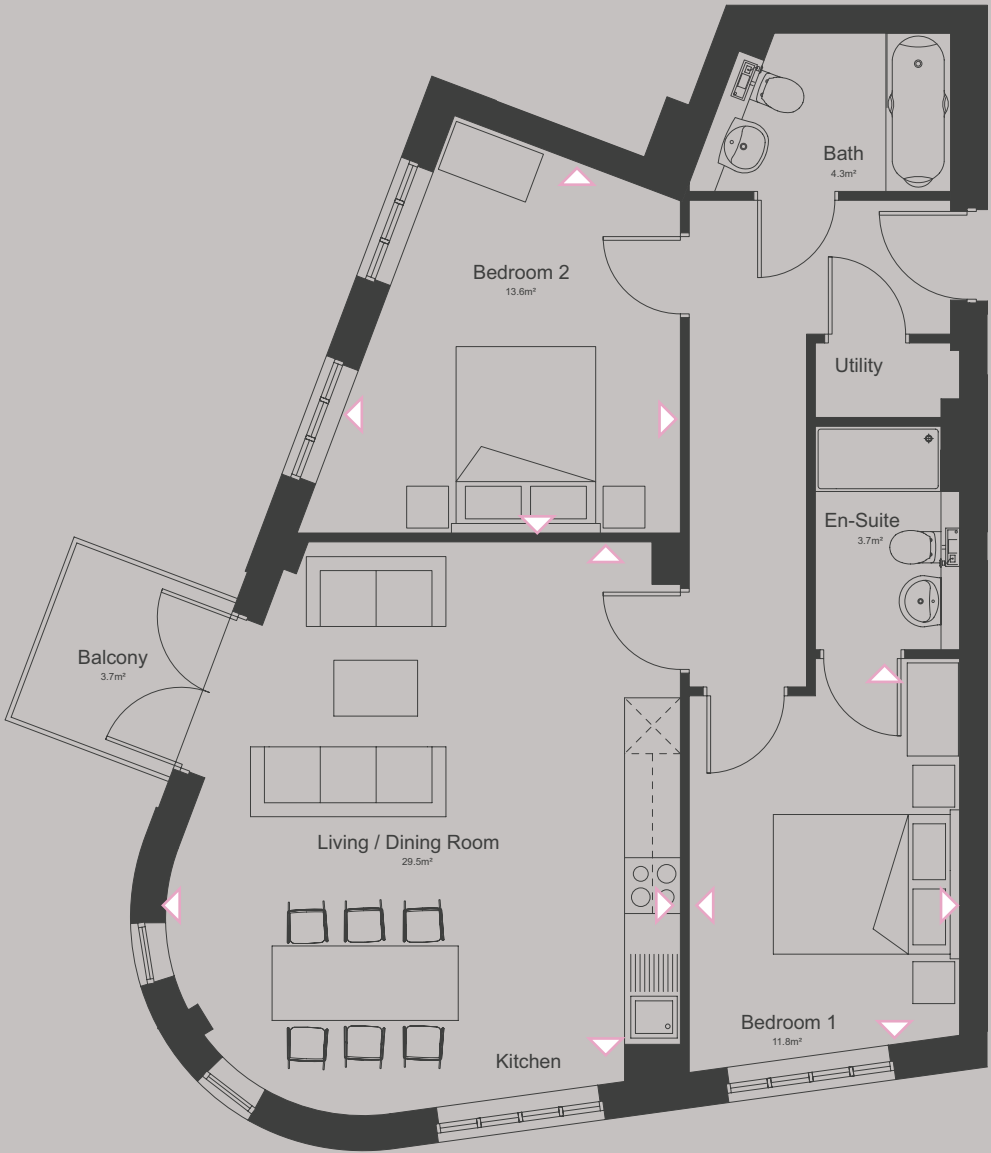
FLAT	SQFT	M2
Total Area	717	66
Living/Kitchen/Dining	234	29
Bedroom 1	147	14
En-suite	36	3
Bedroom 2	138	13
Bath	44	4
Balcony	43	4

**Living/Dining**  
4943mm x 4385mm  
16'3" x 14'5"  
**Bedroom One**  
3609mm x 2810mm  
11'10" x 9'3"  
**Bedroom Two**  
4190mm x 2790mm  
13'0" x 9'2"

Floor Plans

Fourth Floor

The Colthurst  
No. 24  
2 Bedroom



FLAT	SQFT	M2
Total Area	808	75
Living/Kitchen/Dining	317.5	29.5
Bedroom 1	127.0	11.8
En-suite	39.8	3.7
Bedroom 2	145.3	13.6
Bath	46.3	4.3
Balcony	39.8	3.7

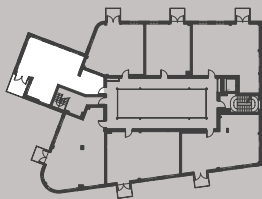
**Living/Dining**  
5397mm x 5100mm  
17'8" x 16'9"  
**Bedroom One**  
4047mm x 2905mm  
13'3" x 9'6"  
**Bedroom Two**  
4022mm x 3274mm  
13'2" x 10'9"



Floor Plans

Fourth Floor

The Colthurst  
No. 25  
2 Bedroom



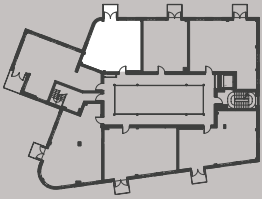
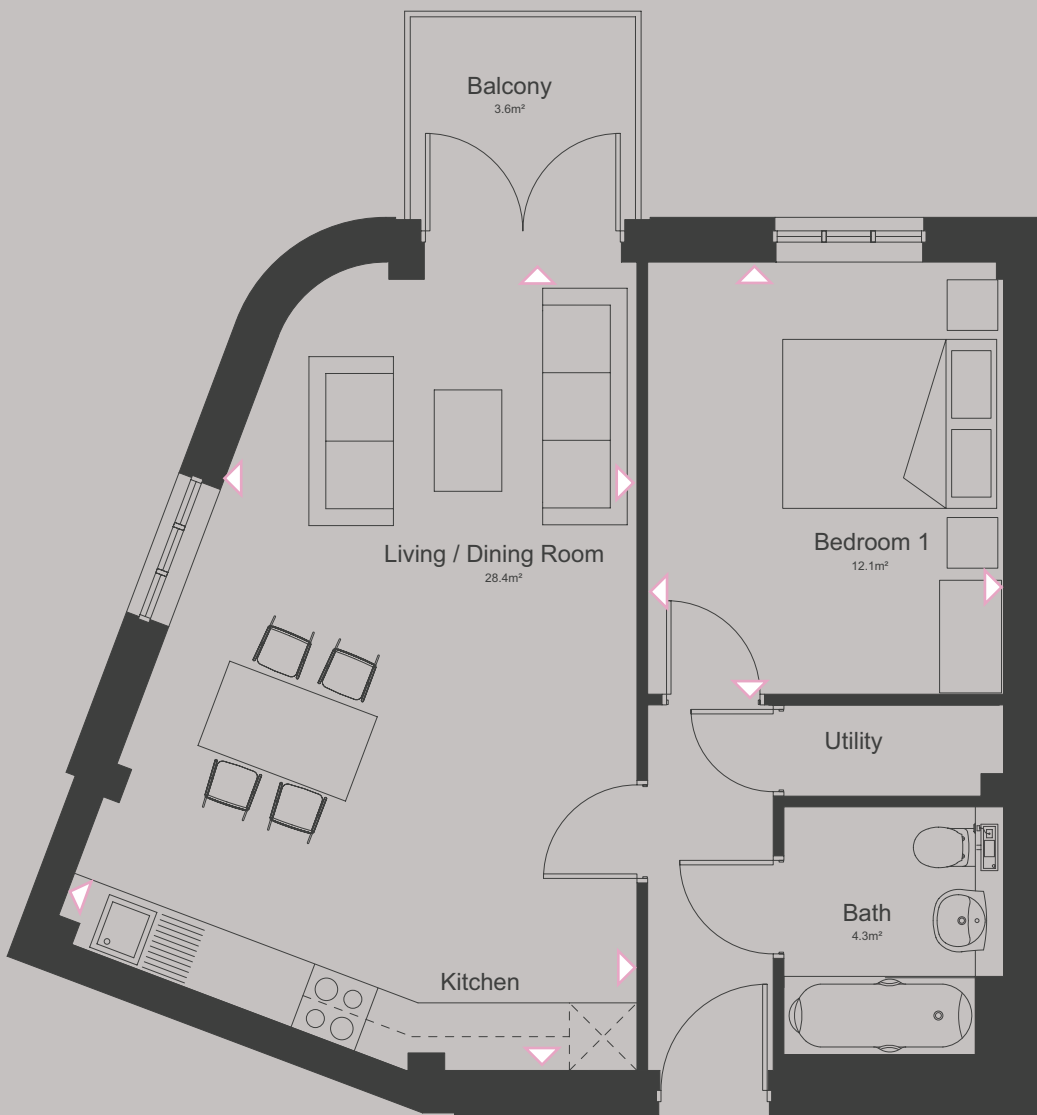
FLAT	SQFT	M2
Total Area	686	64
Living/Kitchen/Dining	271	25
Bedroom 1	113	10
Bedroom 2	111	10
Bath	43	4
Balcony	69	6

**Living/Dining**  
4097mm x 5053mm  
16'7" x 16'7"  
**Bedroom One**  
2898mm x 4488mm  
9'6" x 14'9"  
**Bedroom Two**  
3461mm x 2977mm  
11'4" x 9'9"

Floor Plans

Fourth Floor

The Colthurst  
No. 26  
1 Bedroom



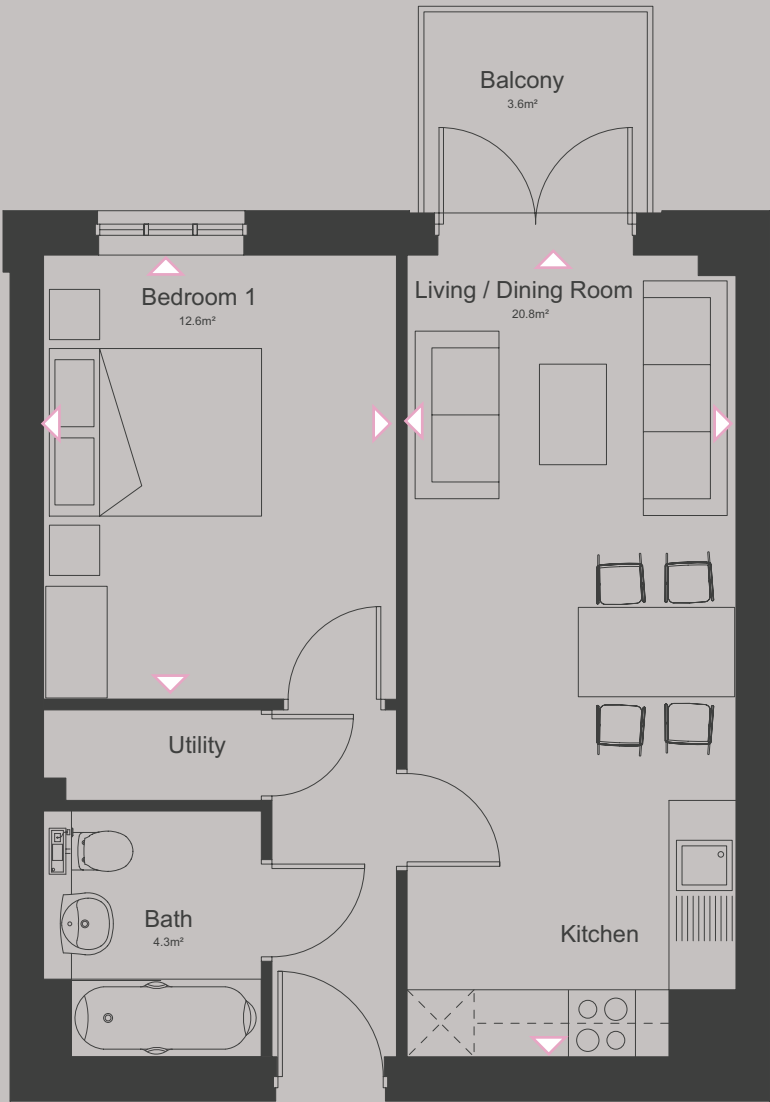
FLAT	SQFT	M2
Total Area	551	51
Living/Kitchen/Dining	306	28
Bedroom 1	130	12
Bath	46	4
Balcony	39	3

**Living/Dining**  
7176mm x 5135mm  
23'7" x 16'10"  
7176mm x 3928mm  
23'7" x 12'11"  
**Bedroom One**  
3836mm x 3160mm  
12'7" x 10'4"

Floor Plans

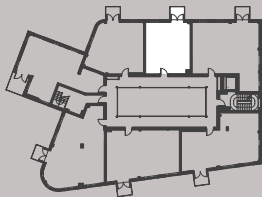
Fourth Floor

The Colthurst  
No. 27  
1 Bedroom



**Living/Dining**  
7176mm x 2945mm  
23'7" x 9'8"  
**Bedroom One**  
3976mm x 3160mm  
13'1" x 10'4"

FLAT	SQFT	M2
Total Area	471	44
Living/Kitchen/Dining	224	21
Bedroom 1	135	12
Bath	46	4
Balcony	39	3



Floor Plans

Fourth Floor

The Colthurst  
No. 28  
2 Bedroom



**Living/Dining**  
9645mm x 3308mm  
31'8" x 10'10"  
**Bedroom One**  
3976mm x 2925mm  
13'1" x 9'7"  
**Bedroom Two**  
3976mm x 2924mm  
13'1" x 9'7"

FLAT	SQFT	M2
Total Area	789	73
Living/Kitchen/Dining	320	30
Bedroom 1	125	11
Bedroom 2	125	11
Bath	46	4
Shower	35	3
Balcony	39	3



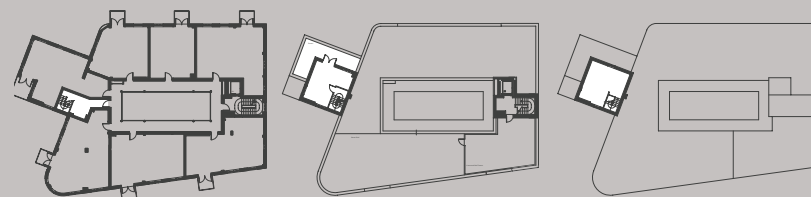


# Floor Plans

Fourth Floor  
Fifth Floor  
Sixth Floor

## The Colthurst No. 29

2 Bedroom



**Living/Dining**  
5646mm x 5550mm  
18'6" x 18'3"  
3741mm x 5550mm  
12'3" x 18'3"  
**Bedroom One**  
3596mm x 3335mm  
11'10" x 10'11"  
**Bedroom Two**  
3741mm x 2120mm  
12'3" x 6'11"

FLAT	SQFT	M2
Total Area	846	79
Living/Kitchen/Dining	275	25
Bedroom 1	111	10
Bedroom 2	88	8
Bath	46	4
WC	14	1

# RENGEN

## A DEVELOPMENT BY RENGEN

Rengen is a multi-disciplinary property developer focusing on strategic development and regeneration in the South West of England.

With a decade of experience in South West delivery Rengen has a highly-experienced in-house team, successful in sourcing sites, funding, planning, developing and delivering across a wide range of sectors.

Working collaboratively with local council, communities and businesses, Rengen provides a strong position from where it explores opportunities and create value from sensitive sites in challenging locations.

Rengen is proud of the Paintworks IV product, which adds to the overall community already created as part of the wider Paintworks brand.



www.paintworksiv.com  
email: bristolnewhomes@savills.com  
phone: +44 (0)117 910 0360

### DISCLAIMER

Rengen Developments, their clients give notice that: They are not authorised to make or give any representations or warranties in relation to the property either here or elsewhere, either on their own behalf or on behalf of their client or otherwise. These particulars do not form part of any offer or contract and must not be relied upon as statements or representations of fact. All areas, measurements or distances are approximate, text, Photographs/CGIs and plans are for guidance only and are not necessarily Comprehensive or of this scheme. It should not be assumed that the property has all necessary planning, building regulation or other consents and Webbers have not tested any services, equipment or facilities. Purchasers must satisfy themselves by inspection or otherwise. These particulars were prepared from preliminary plans and specifications before the completion of the properties. They are intended only as a guide. Changes may have been made during construction and final finishes could vary. Prospective purchasers should not rely on this information but must get their solicitor to check the plans and specification attached to their contract. The reference to any mechanical or electrical equipment or other facilities at the property shall not constitute a representation (unless otherwise stated) as to its state or condition or that it is capable of fulfilling its intended function and prospective purchasers / tenants should satisfy themselves as to the fitness of such equipment for their requirements. August 2021.



# RENGEN

IV • PAINTWORKS • BRISTOL  
BRISTOL • BS4 3EH



[www.paintworksiv.com](http://www.paintworksiv.com)  
email: [bristolnewhomes@savills.com](mailto:bristolnewhomes@savills.com)  
phone: +44 (0)117 910 0360