

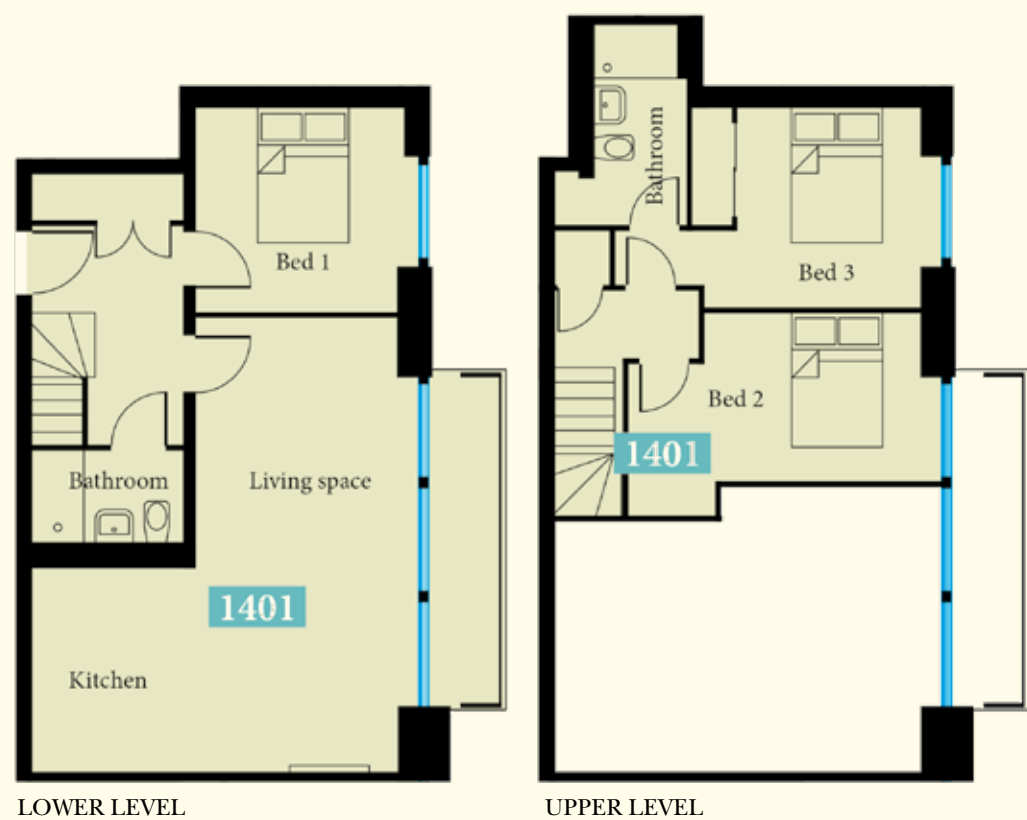
Penthouse 1401

NUMBER ONE BRISTOL

Lewins Place, Lewins Mead, Bristol BS1 2NR

savills

THE
PG
GROUP



Penthouse 1401

85.4 sq m*

Living space 5.59m x 6.97m (18'4" x 22'10")

Bedroom 1 3.08m x 2.81m (10'1" x 9'3")

Bedroom 2 4.54m x 2.83m (14'11" x 9'3")

Bedroom 3 3.23m x 2.64m (10'7" x 8'8")

Balcony area 4.43m²

*All measurements that are listed have been taken from the widest points in the room.



Important Notice

Savills, their clients and any joint agents give notice that: 1. They are not authorised to make or give any representations or warranties in relation to the property either here or elsewhere, either on their own behalf or on behalf of their client or otherwise. They assume no responsibility for any statement that may be made in these particulars. These particulars do not form part of any offer or contract and must not be relied upon as statements or representations of fact. 2. Any areas, measurements or distances are approximate. The text, photographs and plans are for guidance only and are not necessarily comprehensive. It should not be assumed that the property has all necessary planning, building regulation or other consents and Savills have not tested any services, equipment or facilities. Purchasers must satisfy themselves by inspection or otherwise. 18/01/02 CG

savills

Savills Bristol

Embassy House,
Queens Avenue,
Bristol BS8 1SB
+44 (0) 1179 100 321
bristolnewhomes@savills.com

Penthouse 1401

NUMBER ONE BRISTOL

Lewins Place, Lewins Mead, Bristol BS1 2NR

A fabulous 3 bedroom duplex penthouse apartment within this popular development in the city centre. Offering open plan living accommodation with double height ceilings and panoramic views of the city. The master bedroom includes ensuite and dressing area whilst the guest bedrooms offer ample space for additional sleeping or living accommodation. With parking for two cars included and access to all of the amenities Number One Bristol has to offer including gym, roof garden and concierge.

- 3 Bedroom Penthouse
- 14th Floor
- Parking for two spaces
- Open plan living
- Private balcony
- City views
- EPC - C
- £539,000



Description

Number One Bristol is a distinctive building located in the heart of Bristol's cultural centre which sits tall among the city skyline. This sublime development has been designed with the city worker in mind, offering the best of modern living and amenities on site which are more akin to London style developments. Amenities of this superb development include a concierge, on site gym, and sky garden, all of which can be used by the 148 apartments.

Location

Bristol is regularly voted as one of the best places to live in The Times polls and it is easy to see why. A vibrant city with culture and heritage in abundance Number One Bristol sits at the heart of all this wonderful city has to offer. Positioned on Lewins Mead, alongside the city centre itself all the wonderful restaurants, bars and nightlife are on your doorstep. In addition access to the local theatres and concert halls are all within walking distance. For those wishing to explore the harbour area, this is situated within a short stroll and makes for a nice afternoon amble, taking in the atmosphere and fresh air. Proximity to the University of Bristol is ideal, and the Bristol Royal Infirmary is also located nearby within walking distance. This is a truly centrally located development with everything positioned on your doorstep.

