



A beautifully presented family home on one of the most sought after roads in Barnes

Elm Grove Road, Barnes, London, SW13

£6,000 pcm plus fees apply, Part Furnished, Unfurnished
Available Now



- Split over 3 floors
- Bright double reception room
- Principle bedroom with fitted wardrobes and en suite bathroom
- Separate utility room
- Lovely, private garden

About this property

Situated on a pretty tree lined street in the heart of Barnes, this 5 bedroom property offers amazing living and entertaining space for all the family.

The ground floor comprises a double reception room with fireplace and wooden floors, leading through to a bright open plan kitchen and dining area which has recently been refurbished with doors out onto a large private garden.

The first floor hosts a principle bedroom with fitted wardrobes and en suite bathroom and further 2 bedrooms with a shared bathroom.

The top floor has 2 more bedrooms and a bathroom with a bath and a shower cabin.

The lower ground floor offers a separate utility room and a bathroom.

Local Information

Elm Grove Road is located just moments from the shops and cafes of Barnes Village and within easy walking distance of Barnes mainline station which provides direct access into London Waterloo.

A range of excellent schools can be found locally, of particular note

- St Paul's School, The Harrobian and The Swedish School.

The Roehampton Club and the LTA National Centre are situated close by, whilst nearby Barn Elms offers a wide range of sporting activities.

Furnishing

Part Furnished, Unfurnished

Local Authority

London Borough of Richmond
Council Tax Band = G

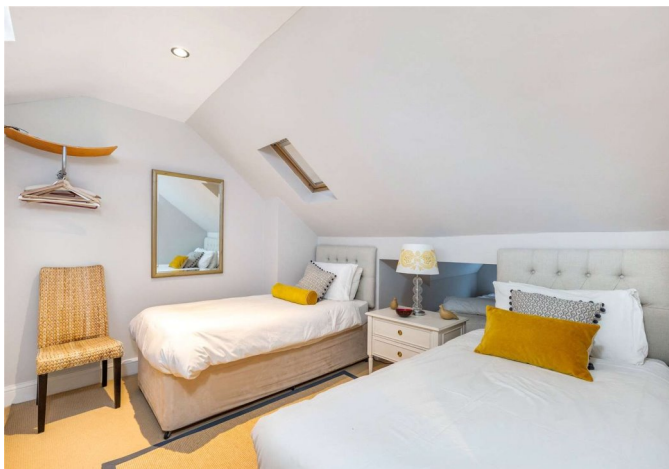
Energy Performance

EPC Rating = D

Viewing

All viewings will be accompanied and are strictly by prior arrangement through Savills Barnes Lettings Office.
Telephone: +44 (0) 20 8939 6914.





Elm Grove Road, Barnes, London, SW13
Gross Internal Area 2211 sq ft, 205.4 m²

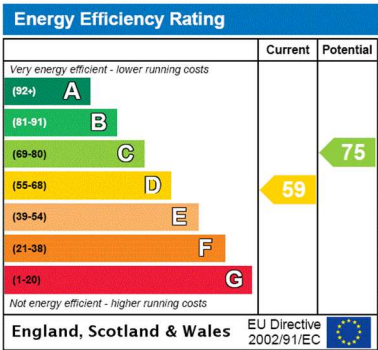
Deborah Scanlon
Barnes Lettings
+44 (0) 20 8939 6914
dscanlon@savills.com

Elm Grove Road

Approximate Gross Internal Area = 2211 sq ft / 205.4 sq m



Not to scale, for guidance only and must not be relied upon as a statement of fact
All measurements and areas are approximate only and have been prepared in accordance with the current edition of the RICS Code of Measuring Practice



Important notice Savills, their clients and any joint agents give notice that: 1. They are not authorised to make or give any representations or warranties in relation to the property either here or elsewhere, either on their own behalf or on behalf of their client or otherwise. They assume no responsibility for any statement that may be made in these particulars. These particulars do not form part of any offer or contract and must not be relied upon as statements or representations of fact. 2. Any areas, measurements or distances are approximate. The text, images and plans are for guidance only and are not necessarily comprehensive. It should not be assumed that the property has all necessary planning, building regulation or other consents and Savills have not tested any services, equipment or facilities. Prospective tenants must satisfy themselves by inspection or otherwise. Please note that the local area may be affected by aircraft noise, you should make your own enquiries regarding any noise within the area before you make any offer.

*There are different rules and fees for different tenancy types. For details of our fees and charges please go to Savills.co.uk/tenant-fees. For more detailed information read our applicant guide at savills.co.uk/applicant-guide.
Hard copy available on request. . 20201103KOCA

