



A 5 bedroom family home close to Battersea Park.

Brynmaer Road, SW11

Freehold



Master bedroom with walk in wardrobe and en suite bathroom • Four further double bedrooms, two with en suite bathrooms • Family bathroom • Kitchen • Reception room • Dining room • Garden • Utility room

Local information

Brynmaer Road is situated one road back from the wonderful facilities and open expanse of Battersea Park. There are excellent transport connections to Chelsea either by bus or by train from Battersea Park or Queenstown Road, with Clapham Junction mainline station also near by.

About this property

This large family home offers a wealth of flexible living and entertaining space, and benefits from the enviable location on one of Battersea's most desirable residential streets close to Battersea Park. Towards the rear of the ground floor lies the spacious reception room which benefits from access out onto the decked garden. The open plan kitchen/dining room at the front of the property features a range of units with integrated appliances, high ceilings and wooden flooring. There is also a separate utility room and cloakroom located on the lower ground floor. The master bedroom occupies the front of the second floor and benefits from a walk in wardrobe and en suite bathroom. The further four double bedrooms (two with en suite bath/shower rooms) are arranged over the remainder of the first and second floors, along with a separate family bathroom. The property also benefits from air conditioning and also security cameras throughout.

Please note that photographs were taken more than 6 months ago.

Tenure

Freehold

Local Authority

London Borough of Wandsworth

EPC rating = D

Viewing

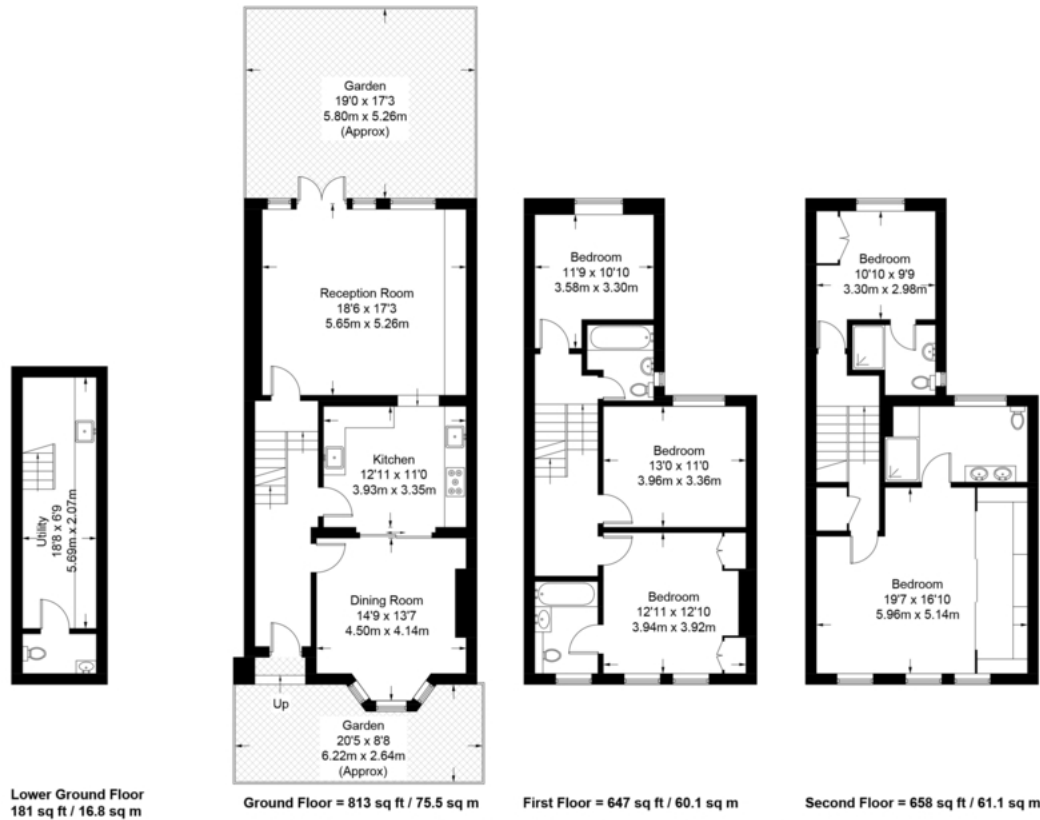
Strictly by appointment with Savills



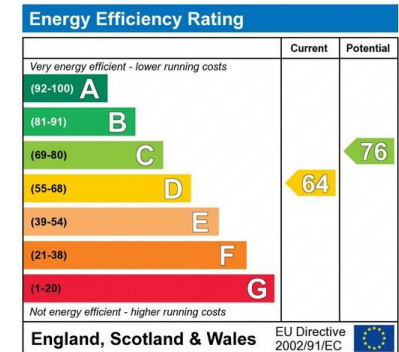


Brynmaer Road

Approximate Gross Internal Area = 2299 sq ft / 213.5 sq m



Not to scale, for guidance only and must not be relied upon as a statement of fact.
 All measurements and areas are approximate only and have been prepared in accordance with the current edition of the RICS Code of Measuring Practice.



Important notice: Savills, their clients and any joint agents give notice that 1: They are not authorised to make or give any representations or warranties in relation to the property either here or elsewhere, either on their own behalf or on behalf of their client or otherwise. They assume no responsibility for any statement that may be made in these particulars. These particulars do not form part of any offer or contract and must not be relied upon as statements or representations of fact. 2: Any areas, measurements or distances are approximate. The text, photographs and plans are for guidance only and are not necessarily comprehensive. It should not be assumed that the property has all necessary planning, building regulation or other consents and Savills have not tested any services, equipment or facilities. Purchasers must satisfy themselves by inspection or otherwise. 02023052 Job ID: 142119 User initials: LM