



Crest
NICHOLSON

U L T I M A

A T S H E R B O R N E W H A R F

1, 2 & 3 bedroom apartments



ULTIMATE WATERSIDE LIVING

You might say it's a case of saving the best until last.

Ultima in the heart of Birmingham, is the final stage of Sherborne Wharf, taking a premium position on the Old Birmingham Canal. It's not only close to the water, but close to everything a city dweller needs for work, sport, leisure and travel. Many of Birmingham's dazzling attractions are within easy walking distance.

At Ultima we are offering a range of highly specified 1, 2 and 3 bedroom apartments, in four buildings set around a landscaped courtyard. Many homes look out over the lively canal bank scene, with its colourful narrowboats, smart apartment buildings, and paved walkways where you can take a stroll to..... almost anywhere you need to be.



COMPLETING THE PICTURE

Sherborne Wharf has become one of Birmingham's most sought after destinations.

Crest Nicholson has redeveloped the area to create a vibrant new neighbourhood of high quality apartments, all characterised by our customary Seal of Excellence. Sherborne Wharf residents also enjoy excellent access to business districts, stations, shops and restaurants. The lively working marina and boat hire companies add to the unique appeal of living by the water.





The famous Bullring has now joined forces with Grand Central to create a huge shopping centre with more than 200 shops and a great selection of cafés and restaurants. The Jewellery Quarter is another iconic Birmingham location, an urban village in its own right, where the historic streets are packed with restaurants, bars, galleries and small businesses.



ALWAYS IN THE LOOP

‘Brum’ may be the UK’s second city, but it certainly doesn’t stand back when it comes to offering fantastic shopping, entertainment and arts; and you can experience Birmingham’s best within a few minutes’ walk of Ultima.

Just across the canal is the Barclaycard Arena, one of the city’s leading live performance venues, where family shows, comedy stars, major rock and pop acts take to the stage. It’s only a little further to the Town Hall and Symphony Hall, which compete for your attention with more stellar entertainment.

Birmingham is acknowledged as one of the UK’s leading shopping cities. At Mailbox you’ll find some very exclusive fashion and lifestyle names, including Paul Smith, BoConcept, Emporio Armani and Harvey Nichols: just the place for fashionistas.

You can keep up your health and fitness regime at the Bannatyne Health Spa, five minutes’ walk away at Brindleyplace. Alternatively, head to The Club and Spa at the Cube, which is part of The Mailbox scheme. Here, members can put themselves through their paces in the gym or have an indulgent session in the spa. Or both!



There are great restaurants everywhere from the locally-loved Balti Triangle to Michelin-starred establishments such as Purnell’s, Simpsons and Adam’s.





OUTSTANDING EDUCATION

Birmingham leads the way in education: it has more schools rated Outstanding by Ofsted* than any other regional city, as well as an array of renown Private and Academy schooling to choose from.

Older students also flock to Birmingham. More than 75,000** of them, from both the UK and overseas, study at the city's four universities. The presence of the University of Birmingham, Aston University, Birmingham City University, and Newman University mean that Birmingham has more centres of higher education than any city other than London.



A CITY GOING PLACES

Sitting in the heart of the UK mainland, Birmingham's transport links reach out in all directions.

Birmingham New Street station, 21 minutes on foot from Ultima, is on the line to London, Manchester, Glasgow, Edinburgh, and destinations as far south as Penzance. Moor Street and Snow Hill stations serve further destinations all over the country. HS2, set to begin operations in 2026, will have two new stations in Birmingham and Solihull, consolidating the region's role in the nation's rail services.

Birmingham is also at the crossroads of the UK motorway network, with quick links to the M6, M6 toll, M40, M5 and M42. For overseas trips, Birmingham International Airport is your take-off point for countries across Europe, Asia and North America.



FROM BIRMINGHAM NEW STREET STATION

| | | | | | | |
|--------------------------|---------------|--------------|--------------|---------------|---------|---------------|
| Birmingham International | London Euston | Manchester | Leeds | York | Glasgow | Edinburgh |
| 9 mins | 1 hr 26 mins | 1 hr 27 mins | 1 hr 57 mins | 2 hrs 10 mins | 4 hrs | 4 hrs 25 mins |
| Manchester Airport | Manchester | London | Sheffield | Leeds | | |
| 32 mins | 41 mins | 49 mins | 48 mins | 57 mins | | |



HS2 JOURNEY TIMES

ESTIMATED, FROM 2026

LOCAL AMENITIES

1. Central Business District
2. Birmingham Canal
3. Brindley Place
4. Snow Hill Station
5. Curzon Street Station (HS2 due 2026)
6. New Street Station & Grand Central
7. Library of Birmingham
8. The ICC & Symphony Hall
9. Paradise Circus
10. Victoria Square
11. Chinese Quarter
12. Mailbox & Harvey Nichols
13. The Bullring & Selfridges
14. Arena Birmingham
15. Bannatyne's Health Club



FLYING
HIGH

THE UNSTOPPABLE CITY

House prices up, visitor numbers up, new business enterprises up, employment up, and the strongest economy outside London. Birmingham's success story goes on and on.

This is an amazing city to live in and to invest in. It has a young, well-educated workforce, forging their careers at global companies such as HSBC, Deloitte, PwC, Deutsche Bank and Kraft.

Thanks to the focus of the Midlands Engine Strategy, major investment in Birmingham will continue. It is a coalition of government, councils, businesses, universities and enterprise partnerships that is working to optimise the economic output and growth of this dynamic region.

HS2 will bring many benefits. And much is happening in Birmingham City Centre itself, including the regeneration of the Paradise neighbourhood off Broad Street, creating a new heart of the city with a £700 million investment in offices, shops, leisure spaces and three new public squares.



100,000

increase in population
2006-2016

*Office of National Statistics



No 1

city for quality of life
outside London

*Global Mercer Quality of Living Report 2018



£24.8b

value of the economy

*www.businessbirmingham.com



40%

of the population
is under 25

www.ukpopulation.org



18,590

business start-ups in 2018

*www.businessbirmingham.com



16%

increase in house prices post
referendum (London 1%)

*Zoopla House Price Index

A POSITIVE OUTLOOK

Ultima at Sherborne Wharf will be a high quality residential environment which not only enhances the lives of its residents, but also adds to the quality of its immediate neighbourhood.

The architects have chosen robust materials and subtle details which suit the urban setting, and arranged the buildings to give as many apartments as possible an outlook over the canal. The majority will have private balconies to make the most of the views, adding immeasurably to quality of life. Attractive landscaping in the central courtyard helps to soften the city's hard edges, and there is underground parking for selected apartments.

Digital illustration is indicative only



THE WHARF



THE MOORINGS



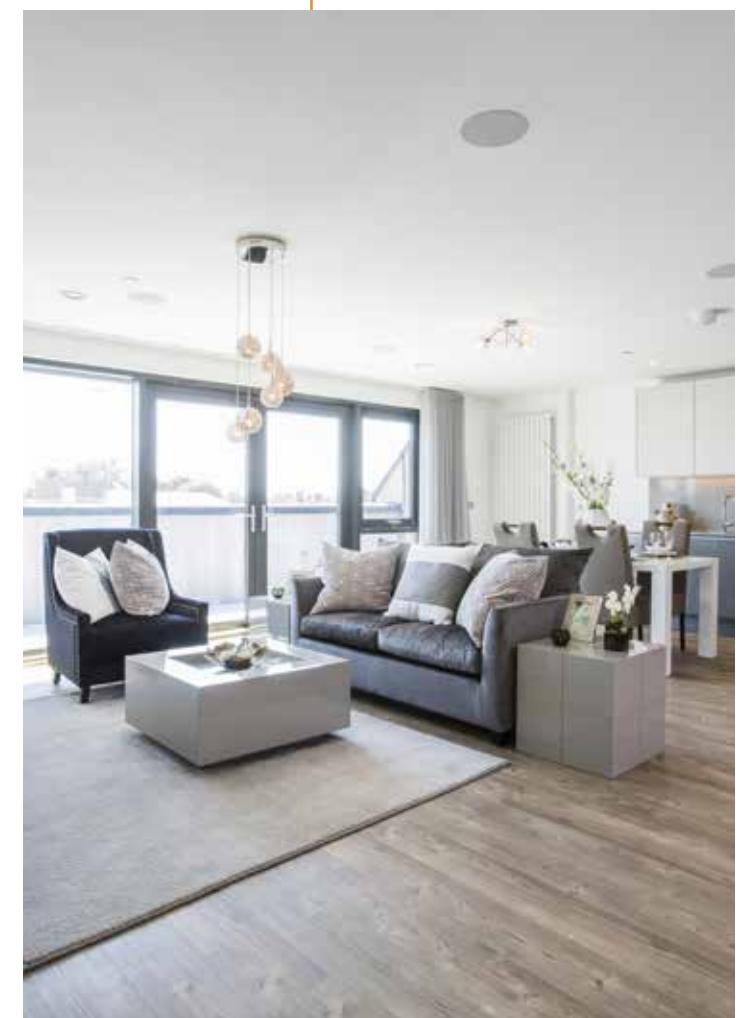
CANAL VIEW

HOME IS LOOKING GOOD

When you're living
and working in the city,
domestic life needs
to be convenient, fresh
and contemporary.

Plenty of natural light, interiors that
meet all the parameters of quality
modern design, tones and colours
you can live with harmoniously. We
have included all of these elements
at Ultima, creating the ultimate
city apartments for discerning,
design-conscious buyers.

Typical Crest Nicholson show home interiors shown



GOING WITH THE FLOW

All of the Ultima
apartments feature open
plan kitchen/living rooms,
following today's preference
for relaxing, cooking,
entertaining and dining
in one seamless space.

The kitchens are individually planned
and furnished with soft-close cabinets,
stainless steel splashbacks and
integrated, brushed steel appliances
by Bosch complete the sleek and
elegant look.



LUXURY WITH PRIVACY

**Ultima offers an exclusive
range of 1, 2 and 3
bedroom apartments.**

All of the 2 and 3 bedroom apartments have an en suite bathroom to the master bedroom. Family bathrooms and en suites alike have a luxurious, fitted look, with contemporary Roca sanitaryware and Porcelanosa tiling.



PREMIER SPECIFICATION

Kitchen

Stylish Paula Rosa Manhattan kitchen with post formed worktops and upstands

Stainless steel splashbacks

Soft close doors and drawers

Brushed steel four-ring electric hob

Brushed steel Bosch electric oven*

Bosch fully integrated dishwasher and fridge freezer*

Bosch brushed steel feature chimney hood*

Low energy LED lighting to under wall units

Leisure Rangemaster 1½bowl stainless steel sink and mono block mixer taps

Central Heating

Myson electric Décor radiators

Bathroom, En suite and Cloakroom

Contemporary white Roca Gap sanitaryware

Vado taps

Half height Porcelanosa tiling on all walls to bathroom and en suite (where applicable)*

Full height Porcelanosa tiling to the bath and shower enclosure

Electric chrome towel rail to bathroom and en suite (where applicable)*

Joinery

Premdor White Finish Premium Ladder Moulded Doors

Satin chrome ironmongery

Decoration

Internal walls painted white throughout

Window boards, internal door frames, skirtings and architraves painted with a white gloss finish

Porcelanosa ceramic floor tiles to kitchen, bathroom and en suite

Environmental Features

Double-glazed windows

Low energy lighting system

A+ rated kitchen appliances*

Electrical

Low energy LED downlighters fitted to the kitchen, bathroom and en suite*

All other areas have pendant lighting

TV/FM/Satellite connections fitted in living room

Shaver sockets fitted to bathroom and en suite (where applicable)*

White recessed extractor fans

Security and Peace of Mind

Door entry phone system linked to main block entrance door and connected to flats

PVCu glazed windows provided with matching white ironmongery and multipoint locking

Mains operated smoke and heat detectors

Communal Areas

Lift

Communal aerial/satellite system

Carpeted floors/stairs

Sensor controlled lighting to lobby/corridors

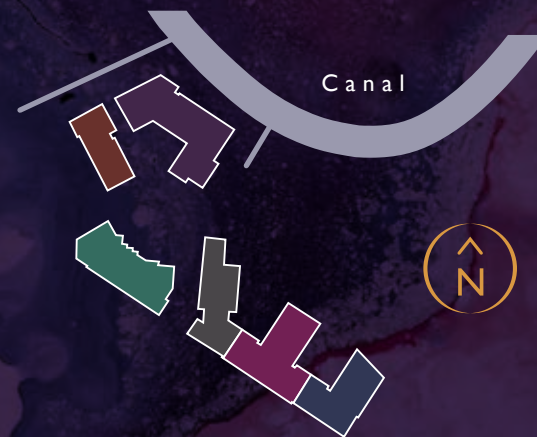
*Plot specific. Please speak to a sales advisor for more details.

Typical Crest Nicholson show home interiors shown

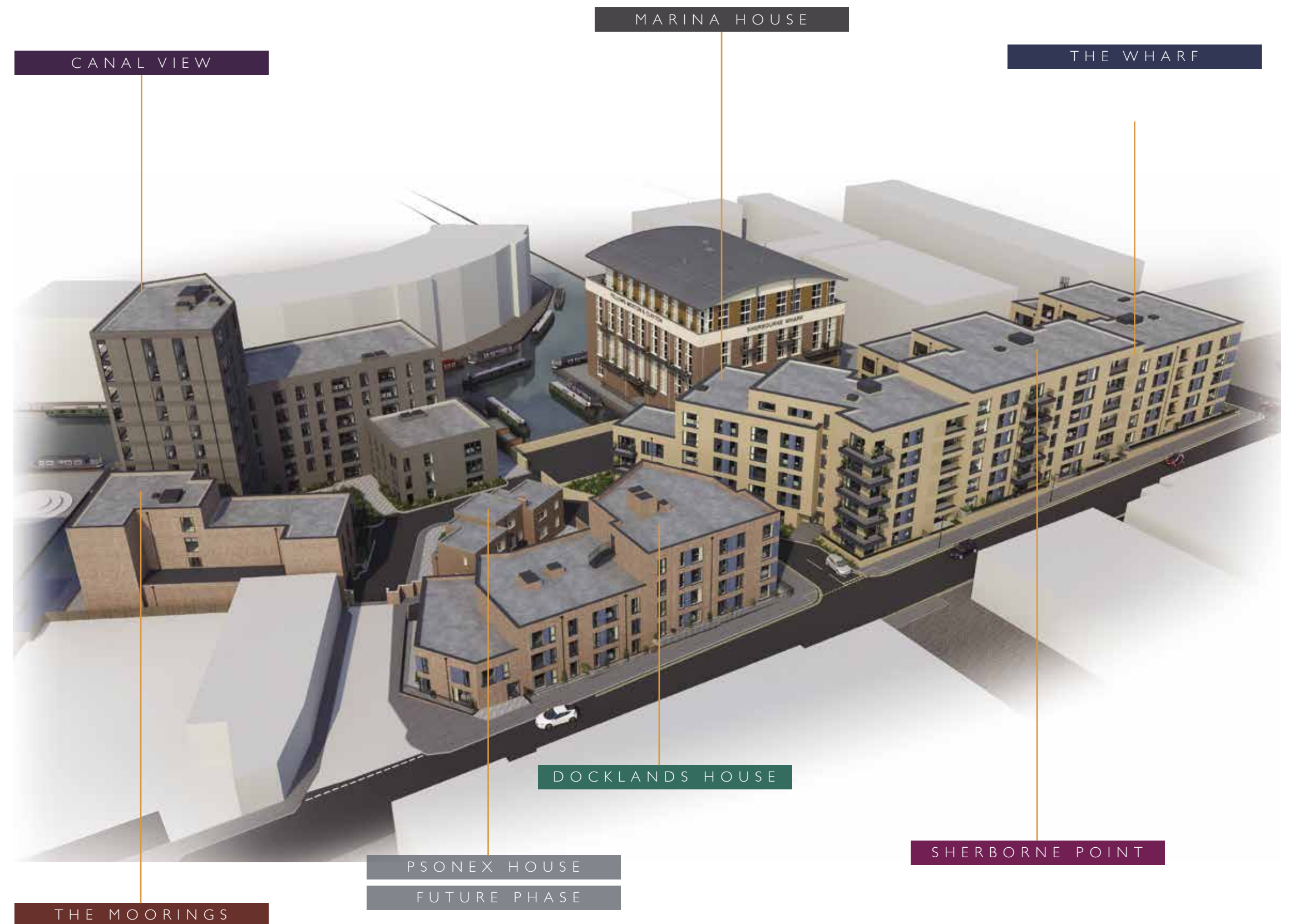


DEVELOPMENT PLAN

- THE WHARF
APARTMENTS 1 - 33
- SHERBORNE POINT
APARTMENTS 34 - 83
- MARINA HOUSE
APARTMENTS 84 - 119
- DOCKLANDS HOUSE
APARTMENTS 120 - 146
- CANAL VIEW
APARTMENTS 171 - 241
- THE MOORINGS
APARTMENTS 242 - 254

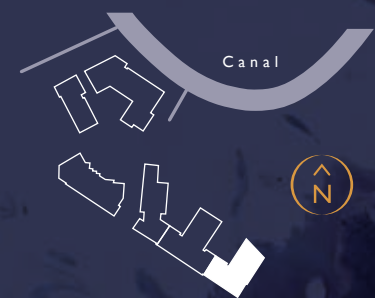


Please note, the development layout shown is a digital illustration only and may not accurately depict elevation materials, gradients, landscaping or street furniture. Crest Nicholson reserves the right to amend the layout and specification as necessary and without notice. Please ask the Sales Advisor for further details.



THE ULTIMATE LOCATION

THE WHARF APARTMENTS 1-33



THE WHARF

1 & 2 BEDROOM APARTMENTS



Ground Floor

Apartment 1

| | | |
|--------------------|-----------------|----------------|
| Living/Dining Area | 4057mm x 4607mm | 13'3" x 15'1" |
| Kitchen | 3655mm x 1965mm | 11'11" x 6'5" |
| Bedroom 1 | 4242mm x 4097mm | 13'11" x 13'5" |
| Bedroom 2 | 2943mm x 3065mm | 9'7" x 10'0" |

Apartment 2

| | | |
|--------------------|-----------------|----------------|
| Living/Dining Area | 4244mm x 4124mm | 13'11" x 13'6" |
| Kitchen | 2386mm x 2060mm | 7'9" x 6'9" |
| Bedroom | 3683mm x 3049mm | 12'1" x 10'0" |

Apartment 3

| | | |
|--------------------|-----------------|----------------|
| Living/Dining Area | 4266mm x 3741mm | 13'11" x 12'3" |
| Kitchen | 5251mm x 1721mm | 17'2" x 5'7" |
| Bedroom 1 | 4074mm x 2825mm | 13'4" x 9'3" |
| Bedroom 2 | 3295mm x 2816mm | 10'9" x 9'2" |

Apartment 4

| | | |
|--------------------|-----------------|----------------|
| Living/Dining Area | 4339mm x 4189mm | 14'2" x 13'8" |
| Kitchen | 4189mm x 1965mm | 13'8" x 6'5" |
| Bedroom | 3618mm x 3067mm | 11'10" x 10'0" |

Apartment 5

| | | |
|--------------------|-----------------|---------------|
| Living/Dining Area | 4472mm x 4378mm | 14'8" x 14'4" |
| Kitchen | 4378mm x 1815mm | 14'4" x 5'11" |
| Bedroom | 3435mm x 3032mm | 11'3" x 9'11" |

Apartment 6

| | | |
|--------------------|-----------------|----------------|
| Living/Dining Area | 3913mm x 3820mm | 12'10" x 12'6" |
| Kitchen | 4170mm x 2059mm | 13'8" x 6'9" |
| Bedroom 1 | 3897mm x 3622mm | 12'9" x 11'10" |
| Bedroom 2 | 2971mm x 2728mm | 9'8" x 8'11" |



2 BEDROOM

1 BEDROOM

A/C Airing cupboard



2 BEDROOM
1 BEDROOM
A/C Airing cupboard

THE WHARF

1 & 2 BEDROOM APARTMENTS



First Floor

Apartment 7

| | | |
|--------------------|-----------------|----------------|
| Living/Dining Area | 4057mm x 4024mm | 13'3" x 13'2" |
| Kitchen | 3655mm x 1965mm | 11'11" x 6'5" |
| Bedroom 1 | 4242mm x 4097mm | 13'11" x 13'5" |
| Bedroom 2 | 2943mm x 2752mm | 9'7" x 9'0" |

Apartment 8

| | | |
|--------------------|-----------------|---------------|
| Living/Dining Area | 4340mm x 4124mm | 14'2" x 13'6" |
| Kitchen | 3100mm x 1964mm | 10'2" x 6'5" |
| Bedroom 1 | 4424mm x 3286mm | 14'6" x 10'9" |
| Bedroom 2 | 3486mm x 2908mm | 11'5" x 9'6" |

Apartment 9

| | | |
|--------------------|-----------------|----------------|
| Living/Dining Area | 4266mm x 3741mm | 13'11" x 12'3" |
| Kitchen | 5251mm x 1721mm | 17'2" x 5'7" |
| Bedroom 1 | 4074mm x 2825mm | 13'4" x 9'3" |
| Bedroom 2 | 3295mm x 2816mm | 10'9" x 9'2" |

Apartment 10

| | | |
|--------------------|-----------------|---------------|
| Living/Dining Area | 5498mm x 4202mm | 18'0" x 13'9" |
| Kitchen | 3841mm x 1785mm | 12'7" x 5'10" |
| Bedroom | 4074mm x 4011mm | 13'4" x 13'1" |

Apartment 11

| | | |
|--------------------|-----------------|---------------|
| Living/Dining Area | 4339mm x 3972mm | 14'2" x 13'0" |
| Kitchen | 3472mm x 1965mm | 11'4" x 6'5" |
| Bedroom 1 | 4424mm x 3362mm | 14'6" x 11'0" |
| Bedroom 2 | 3067mm x 2633mm | 10'0" x 8'7" |

Apartment 12

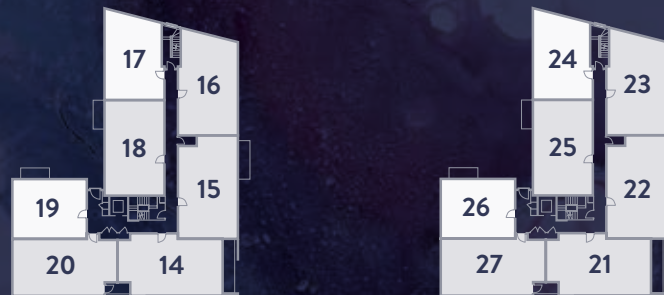
| | | |
|--------------------|-----------------|---------------|
| Living/Dining Area | 4472mm x 4378mm | 14'8" x 14'4" |
| Kitchen | 4378mm x 1815mm | 14'4" x 5'11" |
| Bedroom | 3435mm x 3032mm | 11'3" x 9'11" |

Apartment 13

| | | |
|--------------------|-----------------|----------------|
| Living/Dining Area | 3913mm x 3820mm | 12'10" x 12'6" |
| Kitchen | 4170mm x 2059mm | 13'8" x 6'9" |
| Bedroom 1 | 3897mm x 3622mm | 12'9" x 11'10" |
| Bedroom 2 | 2971mm x 2728mm | 9'8" x 8'11" |

THE WHARF

1 & 2 BEDROOM APARTMENTS



Second & Third Floor

Apartments 14 & 21

| | | |
|--------------------|-----------------|----------------|
| Living/Dining Area | 4057mm x 4024mm | 13'3" x 13'2" |
| Kitchen | 3655mm x 1965mm | 11'11" x 6'5" |
| Bedroom 1 | 4242mm x 4097mm | 13'11" x 13'5" |
| Bedroom 2 | 2943mm x 2752mm | 9'7" x 9'0" |

Apartments 15 & 22

| | | |
|--------------------|-----------------|---------------|
| Living/Dining Area | 4340mm x 4124mm | 14'2" x 13'6" |
| Kitchen | 3100mm x 1964mm | 10'2" x 6'5" |
| Bedroom 1 | 4424mm x 3286mm | 14'6" x 10'9" |
| Bedroom 2 | 3486mm x 2908mm | 11'5" x 9'6" |

Apartments 16 & 23

| | | |
|--------------------|-----------------|----------------|
| Living/Dining Area | 4266mm x 3741mm | 13'11" x 12'3" |
| Kitchen | 5251mm x 1721mm | 17'2" x 5'7" |
| Bedroom 1 | 4074mm x 2825mm | 13'4" x 9'3" |
| Bedroom 2 | 3295mm x 2816mm | 10'9" x 9'2" |

Apartments 17 & 24

| | | |
|--------------------|-----------------|---------------|
| Living/Dining Area | 5498mm x 4202mm | 18'0" x 13'9" |
| Kitchen | 3841mm x 1785mm | 12'7" x 5'10" |
| Bedroom | 4074mm x 4011mm | 13'4" x 13'1" |

Apartments 18 & 25

| | | |
|--------------------|-----------------|---------------|
| Living/Dining Area | 4339mm x 3972mm | 14'2" x 13'0" |
| Kitchen | 3472mm x 1965mm | 11'4" x 6'5" |
| Bedroom 1 | 4424mm x 3362mm | 14'6" x 11'0" |
| Bedroom 2 | 3067mm x 2633mm | 10'0" x 8'7" |

Apartments 19 & 26

| | | |
|--------------------|-----------------|---------------|
| Living/Dining Area | 4472mm x 4378mm | 14'8" x 14'4" |
| Kitchen | 4378mm x 1815mm | 14'4" x 5'11" |
| Bedroom | 3435mm x 3032mm | 11'3" x 9'11" |

Apartments 20 & 27

| | | |
|--------------------|-----------------|----------------|
| Living/Dining Area | 3913mm x 3820mm | 12'10" x 12'6" |
| Kitchen | 4170mm x 2059mm | 13'8" x 6'9" |
| Bedroom 1 | 3897mm x 3622mm | 12'9" x 11'10" |
| Bedroom 2 | 2971mm x 2728mm | 9'8" x 8'11" |



2 BEDROOM
1 BEDROOM

A/C Airing cupboard



■ 2 BEDROOM
■ 1 BEDROOM
A/C Airing cupboard

THE WHARF

1 & 2 BEDROOM APARTMENTS



Fourth Floor

Apartment 28

| | | |
|--------------------|-----------------|----------------|
| Living/Dining Area | 4057mm x 4024mm | 13'3" x 13'2" |
| Kitchen | 3655mm x 1965mm | 11'11" x 6'5" |
| Bedroom 1 | 4242mm x 4097mm | 13'11" x 13'5" |
| Bedroom 2 | 2943mm x 2752mm | 9'7" x 9'0" |

Apartment 29

| | | |
|--------------------|-----------------|---------------|
| Living/Dining Area | 4340mm x 4124mm | 14'2" x 13'6" |
| Kitchen | 3100mm x 1964mm | 10'2" x 6'5" |
| Bedroom 1 | 4424mm x 3286mm | 14'6" x 10'9" |
| Bedroom 2 | 3486mm x 2908mm | 11'5" x 9'6" |

Apartment 30

| | | |
|--------------------|-----------------|-----------------|
| Living/Dining Area | 6490mm x 4377mm | 21'3" x 14'4" |
| Kitchen | 3401mm x 2226mm | 11'1" x 7'3" |
| Bedroom 1 | 4171mm x 3930mm | 13'8" x 12'10" |
| Bedroom 2 | 3930mm x 3332mm | 12'10" x 10'11" |

Apartment 31

| | | |
|--------------------|-----------------|---------------|
| Living/Dining Area | 4339mm x 3972mm | 14'2" x 13'0" |
| Kitchen | 3472mm x 1965mm | 11'4" x 6'5" |
| Bedroom 1 | 4424mm x 3362mm | 14'6" x 11'0" |
| Bedroom 2 | 3067mm x 2633mm | 10'0" x 8'7" |

Apartment 32

| | | |
|--------------------|-----------------|---------------|
| Living/Dining Area | 4472mm x 4378mm | 14'8" x 14'4" |
| Kitchen | 4378mm x 1815mm | 14'4" x 5'11" |
| Bedroom | 3435mm x 3032mm | 11'3" x 9'11" |

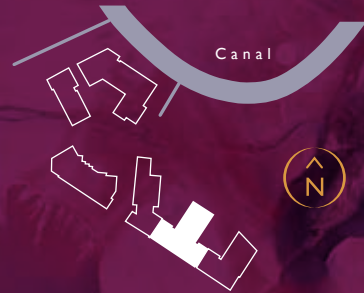
Apartment 33

| | | |
|--------------------|-----------------|----------------|
| Living/Dining Area | 3913mm x 3820mm | 12'10" x 12'6" |
| Kitchen | 4170mm x 2059mm | 13'8" x 6'9" |
| Bedroom 1 | 3897mm x 3622mm | 12'9" x 11'10" |
| Bedroom 2 | 2971mm x 2728mm | 9'8" x 8'11" |



SHERBORNE POINT

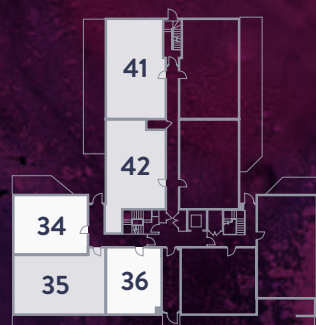
APARTMENTS 34-83



SHERBORNE POINT

SIDE A

1 & 2 BEDROOM APARTMENTS



Ground Floor

Apartment 34

| | | |
|--------------------|-----------------|---------------|
| Living/Dining Area | 4471mm x 4414mm | 14'8" x 14'5" |
| Kitchen | 4414mm x 1816mm | 14'5" x 5'11" |
| Bedroom | 3418mm x 2337mm | 11'2" x 7'8" |

Apartment 35

| | | |
|--------------------|-----------------|---------------|
| Living/Dining Area | 4322mm x 3597mm | 14'2" x 11'9" |
| Kitchen | 3689mm x 1965mm | 12'1" x 6'5" |
| Bedroom 1 | 2980mm x 2630mm | 9'9" x 8'7" |
| Bedroom 2 | 2980mm x 2802mm | 9'9" x 9'2" |

Apartment 36

| | | |
|--------------------|-----------------|---------------|
| Living/Dining Area | 4064mm x 3785mm | 13'4" x 12'5" |
| Kitchen | 3560mm x 1795mm | 11'8" x 5'10" |
| Bedroom | 3232mm x 2895mm | 10'7" x 9'5" |

Apartment 41

| | | |
|--------------------|-----------------|----------------|
| Living/Dining Area | 4339mm x 3848mm | 14'2" x 12'7" |
| Kitchen | 4206mm x 1665mm | 13'9" x 5'5" |
| Bedroom 1 | 4244mm x 3572mm | 13'11" x 11'8" |
| Bedroom 2 | 3049mm x 3165mm | 10'0" x 10'4" |

Apartments 42

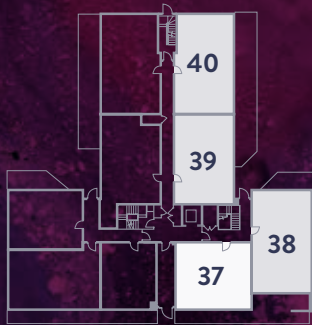
| | | |
|--------------------|-----------------|---------------|
| Living/Dining Area | 4169mm x 3789mm | 13'8" x 12'5" |
| Kitchen | 3180mm x 2135mm | 10'5" x 7'0" |
| Bedroom 1 | 4074mm x 3142mm | 13'4" x 10'3" |
| Bedroom 2 | 4074mm x 2545mm | 13'4" x 8'4" |



SHERBORNE POINT

SIDE B

1 & 2 BEDROOM APARTMENTS



Ground Floor

Apartment 37

| | | |
|--------------------|-----------------|---------------|
| Living/Dining Area | 5327mm x 4423mm | 17'5" x 14'6" |
| Kitchen | 3820mm x 1785mm | 12'6" x 5'10" |
| Bedroom | 4187mm x 3603mm | 13'8" x 11'9" |

Apartment 38

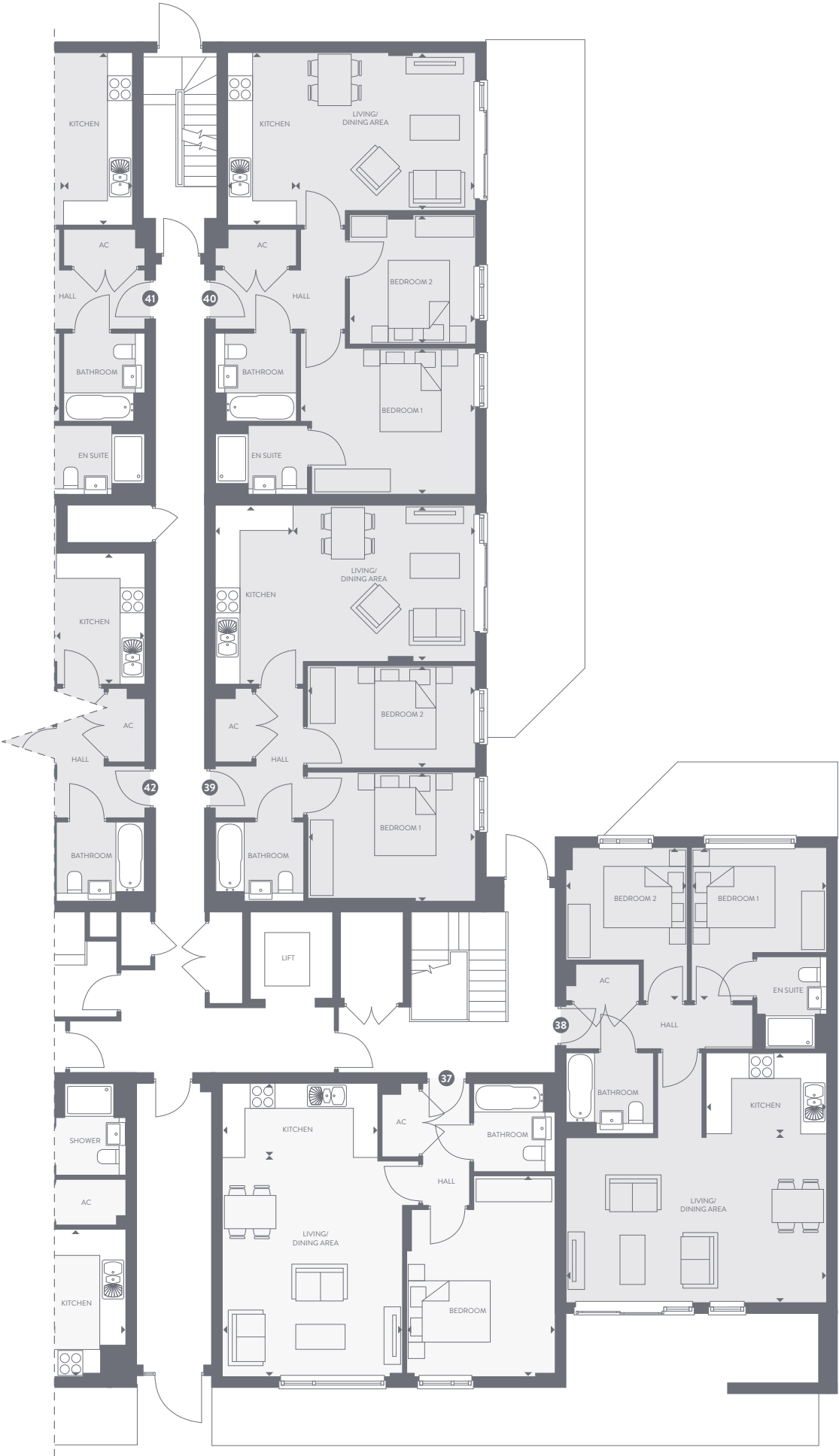
| | | |
|--------------------|-----------------|---------------|
| Living/Dining Area | 6341mm x 4107mm | 20'9" x 13'5" |
| Kitchen | 2935mm x 1980mm | 9'7" x 6'5" |
| Bedroom 1 | 3718mm x 3285mm | 12'2" x 10'9" |
| Bedroom 2 | 3718mm x 2961mm | 12'2" x 9'8" |

Apartment 39

| | | |
|--------------------|-----------------|---------------|
| Living/Dining Area | 4169mm x 3789mm | 13'8" x 12'5" |
| Kitchen | 4346mm x 2135mm | 14'3" x 7'0" |
| Bedroom 1 | 4074mm x 3142mm | 13'4" x 10'3" |
| Bedroom 2 | 4074mm x 2545mm | 13'4" x 8'4" |

Apartment 40

| | | |
|--------------------|-----------------|----------------|
| Living/Dining Area | 4339mm x 3848mm | 14'2" x 12'7" |
| Kitchen | 4206mm x 1665mm | 13'9" x 5'5" |
| Bedroom 1 | 4244mm x 3572mm | 13'11" x 11'8" |
| Bedroom 2 | 3049mm x 3165mm | 10'0" x 10'4" |



2 BEDROOM

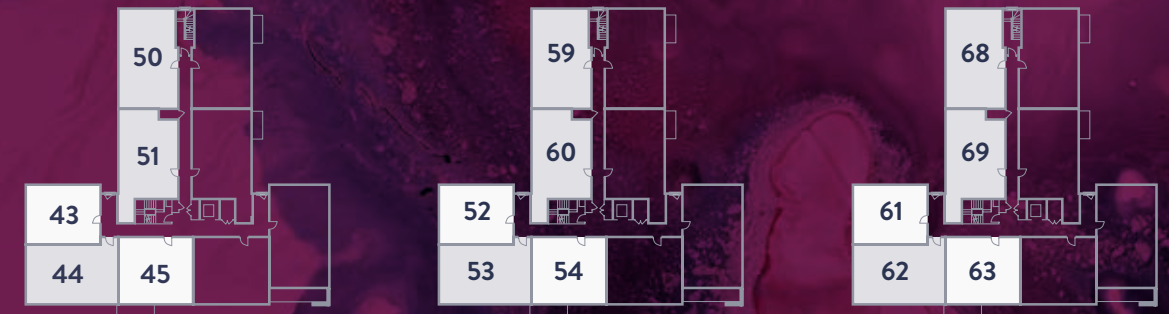
1 BEDROOM

A/C Airing cupboard



■ 2 BEDROOM
□ 1 BEDROOM
A/C Airing cupboard

SHERBORNE POINT SIDE A 1 & 2 BEDROOM APARTMENTS



First, Second & Third Floor

Apartments 43, 52 & 61

| | | |
|--------------------|-----------------|---------------|
| Living/Dining Area | 4471mm x 4414mm | 14'8" x 14'5" |
| Kitchen | 4414mm x 1816mm | 14'5" x 5'11" |
| Bedroom | 3433mm x 2337mm | 11'3" x 7'8" |

Apartments 44, 53 & 62

| | | |
|--------------------|-----------------|---------------|
| Living/Dining Area | 4322mm x 3597mm | 14'2" x 11'9" |
| Kitchen | 3689mm x 1965mm | 12'1" x 6'5" |
| Bedroom 1 | 2980mm x 2630mm | 9'9" x 8'7" |
| Bedroom 2 | 2980mm x 2802mm | 9'9" x 9'2" |

Apartments 45, 54 & 63

| | | |
|--------------------|-----------------|----------------|
| Living/Dining Area | 5327mm x 4237mm | 17'5" x 13'10" |
| Kitchen | 3635mm x 1785mm | 11'11" x 5'10" |
| Bedroom | 4055mm x 3614mm | 13'3" x 11'10" |

Apartments 50, 59 & 68

| | | |
|--------------------|-----------------|----------------|
| Living/Dining Area | 4339mm x 3848mm | 14'2" x 12'7" |
| Kitchen | 4206mm x 1665mm | 13'9" x 5'5" |
| Bedroom 1 | 4244mm x 3572mm | 13'11" x 11'8" |
| Bedroom 2 | 3049mm x 3165mm | 10'0" x 10'4" |

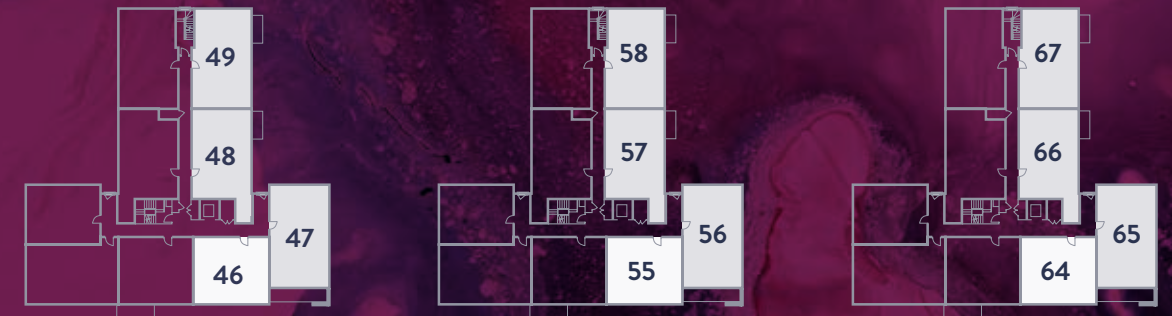
Apartments 51, 60 & 69

| | | |
|--------------------|-----------------|---------------|
| Living/Dining Area | 4169mm x 3789mm | 13'8" x 12'5" |
| Kitchen | 3180mm x 2135mm | 10'5" x 7'0" |
| Bedroom 1 | 4074mm x 3142mm | 13'4" x 10'3" |
| Bedroom 2 | 4074mm x 2545mm | 13'4" x 8'4" |



■ 2 BEDROOM
□ 1 BEDROOM
A/C Airing cupboard

SHERBORNE POINT SIDE B 1 & 2 BEDROOM APARTMENTS



First, Second & Third Floor

Apartments 46, 55 & 64

| | | |
|--------------------|-----------------|---------------|
| Living/Dining Area | 5327mm x 4423mm | 17'5" x 14'6" |
| Kitchen | 3820mm x 1785mm | 12'6" x 5'10" |
| Bedroom | 4187mm x 3603mm | 13'8" x 11'9" |

Apartments 47, 56 & 65

| | | |
|--------------------|-----------------|---------------|
| Living/Dining Area | 6341mm x 4107mm | 20'9" x 13'5" |
| Kitchen | 2935mm x 1980mm | 9'7" x 6'5" |
| Bedroom 1 | 3718mm x 3285mm | 12'2" x 10'9" |
| Bedroom 2 | 3718mm x 2961mm | 12'2" x 9'8" |

Apartments 48, 57 & 66

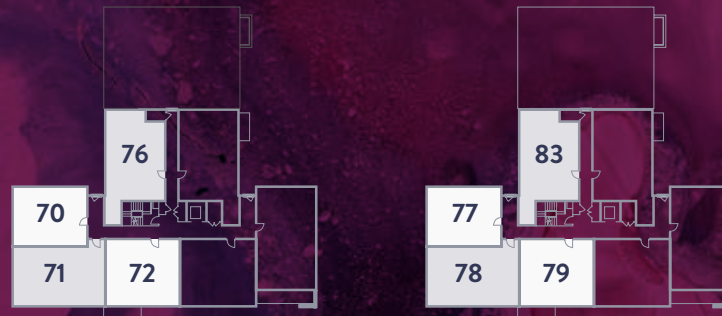
| | | |
|--------------------|-----------------|---------------|
| Living/Dining Area | 4169mm x 3789mm | 13'8" x 12'5" |
| Kitchen | 4346mm x 2135mm | 14'3" x 7'0" |
| Bedroom 1 | 4074mm x 3071mm | 13'4" x 10'0" |
| Bedroom 2 | 4074mm x 2507mm | 13'4" x 8'2" |

Apartments 49, 58 & 67

| | | |
|--------------------|-----------------|----------------|
| Living/Dining Area | 4339mm x 3848mm | 14'2" x 12'7" |
| Kitchen | 4206mm x 1665mm | 13'9" x 5'5" |
| Bedroom 1 | 4244mm x 3572mm | 13'11" x 11'8" |
| Bedroom 2 | 3049mm x 3165mm | 10'0" x 10'4" |

SHERBORNE POINT SIDE A

1 & 2 BEDROOM APARTMENTS



Fourth & Fifth Floor

Apartments 70 & 77

| | | |
|--------------------|-----------------|---------------|
| Living/Dining Area | 4471mm x 4414mm | 14'8" x 14'5" |
| Kitchen | 4414mm x 1816mm | 14'5" x 5'11" |
| Bedroom | 3433mm x 2337mm | 11'3" x 7'8" |

Apartments 71 & 78

| | | |
|--------------------|-----------------|---------------|
| Living/Dining Area | 4322mm x 3597mm | 14'2" x 11'9" |
| Kitchen | 3689mm x 1965mm | 12'1" x 6'5" |
| Bedroom 1 | 2980mm x 2630mm | 9'9" x 8'7" |
| Bedroom 2 | 2980mm x 2802mm | 9'9" x 9'2" |

Apartments 72 & 79

| | | |
|--------------------|-----------------|----------------|
| Living/Dining Area | 5327mm x 4237mm | 17'5" x 13'10" |
| Kitchen | 3635mm x 1785mm | 11'11" x 5'10" |
| Bedroom | 4055mm x 3614mm | 13'3" x 11'10" |

Apartments 76 & 83

| | | |
|--------------------|-----------------|---------------|
| Living/Dining Area | 4169mm x 3789mm | 13'8" x 12'5" |
| Kitchen | 3180mm x 2135mm | 10'5" x 7'0" |
| Bedroom 1 | 4074mm x 3142mm | 13'4" x 10'3" |
| Bedroom 2 | 4074mm x 2545mm | 13'4" x 8'4" |



2 BEDROOM

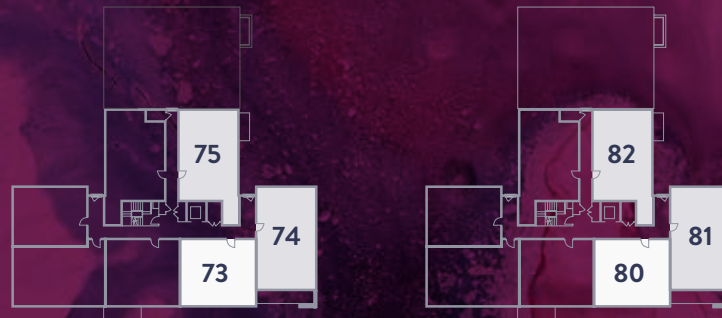
1 BEDROOM

A/C Airing cupboard

SHERBORNE POINT

SIDE B

1 & 2 BEDROOM APARTMENTS



Fourth & Fifth Floor

Apartments 73 & 80

| | | |
|--------------------|-----------------|---------------|
| Living/Dining Area | 5327mm x 4423mm | 17'5" x 14'6" |
| Kitchen | 3820mm x 1785mm | 12'6" x 5'10" |
| Bedroom | 4187mm x 3603mm | 13'8" x 11'9" |

Apartments 74 & 81

| | | |
|--------------------|-----------------|---------------|
| Living/Dining Area | 6341mm x 4107mm | 20'9" x 13'5" |
| Kitchen | 2935mm x 1980mm | 9'7" x 6'5" |
| Bedroom 1 | 3718mm x 3285mm | 12'2" x 10'9" |
| Bedroom 2 | 3718mm x 2961mm | 12'2" x 9'8" |

Apartments 75 & 82

| | | |
|--------------------|-----------------|---------------|
| Living/Dining Area | 4169mm x 3789mm | 13'8" x 12'5" |
| Kitchen | 4346mm x 2135mm | 14'3" x 7'0" |
| Bedroom 1 | 4074mm x 3071mm | 13'4" x 10'0" |
| Bedroom 2 | 4074mm x 2507mm | 13'4" x 8'2" |



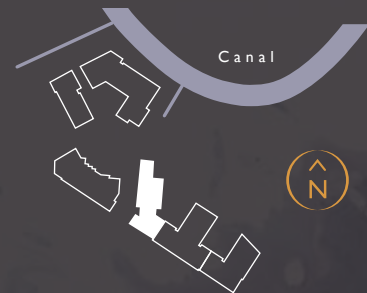
2 BEDROOM

1 BEDROOM

A/C Airing cupboard

MARINA HOUSE

APARTMENTS 84-119

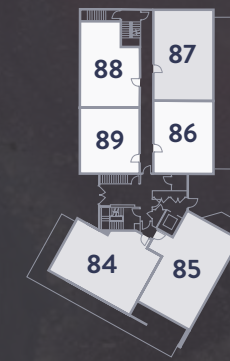




2 BEDROOM
1 BEDROOM
A/C Airing cupboard

MARINA HOUSE

1 & 2 BEDROOM APARTMENTS



Ground Floor

Apartment 84

| | | |
|--------------------|-----------------|---------------|
| Living/Dining Area | 4170mm x 3751mm | 13'8" x 12'3" |
| Kitchen | 3751mm x 2115mm | 12'3" x 6'11" |
| Bedroom 1 | 3446mm x 3238mm | 11'3" x 10'7" |
| Bedroom 2 | 4459mm x 2500mm | 14'7" x 8'2" |

Apartment 85

| | | |
|--------------------|-----------------|---------------|
| Living/Dining Area | 4742mm x 4585mm | 15'6" x 15'0" |
| Kitchen | 3177mm x 1700mm | 10'5" x 5'6" |
| Bedroom 1 | 3191mm x 3021mm | 10'5" x 9'10" |
| Bedroom 2 | 3186mm x 2791mm | 10'5" x 9'1" |

Apartment 86

| | | |
|--------------------|-----------------|---------------|
| Living/Dining Area | 4363mm x 4131mm | 14'3" x 13'6" |
| Kitchen | 3490mm x 1966mm | 11'5" x 6'5" |
| Bedroom | 3392mm x 3547mm | 11'1" x 11'7" |

Apartment 87

| | | |
|--------------------|-----------------|----------------|
| Living/Dining Area | 4506mm x 3726mm | 14'9" x 12'2" |
| Kitchen | 3517mm x 1815mm | 11'6" x 5'11" |
| Bedroom 1 | 4260mm x 3086mm | 13'11" x 10'1" |
| Bedroom 2 | 3014mm x 2730mm | 9'10" x 8'11" |

Apartment 88

| | | |
|-------------|-----------------|---------------|
| Living Area | 4177mm x 3536mm | 13'8" x 11'7" |
| Dining Area | 3107mm x 2134mm | 10'2" x 7'0" |
| Kitchen | 3082mm x 2141mm | 10'1" x 7'0" |
| Bedroom | 3359mm x 3387mm | 11'0" x 11'1" |

Apartment 89

| | | |
|--------------------|-----------------|---------------|
| Living/Dining Area | 4216mm x 3748mm | 13'9" x 12'3" |
| Kitchen | 2596mm x 2060mm | 8'6" x 6'9" |
| Bedroom | 3154mm x 3022mm | 10'4" x 9'10" |

MARINA HOUSE

SIDE A

2 BEDROOM APARTMENTS



First & Second Floor

Apartments 90 & 97

| | | |
|--------------------|-----------------|---------------|
| Living/Dining Area | 4170mm x 3751mm | 13'8" x 12'3" |
| Kitchen | 3751mm x 2115mm | 12'3" x 6'11" |
| Bedroom 1 | 3446mm x 3238mm | 11'3" x 10'7" |
| Bedroom 2 | 4459mm x 2500mm | 14'7" x 8'2" |

Apartments 91 & 98

| | | |
|--------------------|-----------------|---------------|
| Living/Dining Area | 4742mm x 4585mm | 15'6" x 15'0" |
| Kitchen | 3177mm x 1700mm | 10'5" x 5'6" |
| Bedroom 1 | 3191mm x 3021mm | 10'5" x 9'10" |
| Bedroom 2 | 3186mm x 2791mm | 10'5" x 9'1" |

Apartments 92 & 99

| | | |
|--------------------|-----------------|---------------|
| Living/Dining Area | 4504mm x 3903mm | 14'9" x 12'9" |
| Kitchen | 3391mm x 1813mm | 11'1" x 5'11" |
| Bedroom 1 | 4257mm x 2785mm | 13'11" x 9'1" |
| Bedroom 2 | 3035mm x 2699mm | 9'11" x 8'8" |

Apartments 96 & 103

| | | |
|--------------------|-----------------|---------------|
| Living/Dining Area | 4320mm x 3583mm | 14'2" x 11'9" |
| Kitchen | 3856mm x 1964mm | 12'7" x 6'5" |
| Bedroom 1 | 4406mm x 4163mm | 14'5" x 13'7" |
| Bedroom 2 | 3036mm x 2699mm | 9'11" x 8'10" |



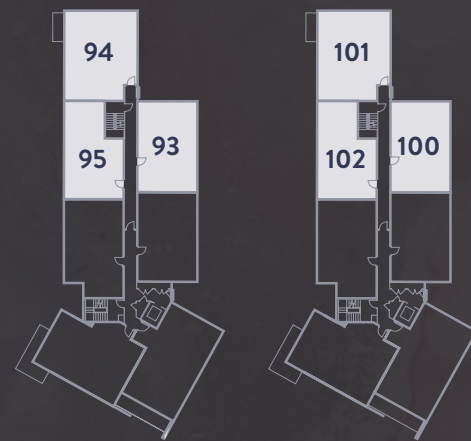
2 BEDROOM

A/C Airing cupboard

MARINA HOUSE

SIDE B

2 BEDROOM APARTMENTS



First & Second Floor

Apartments 93 & 100

| | | |
|--------------------|-----------------|----------------|
| Living/Dining Area | 4356mm x 3516mm | 14'3" x 11'6" |
| Kitchen | 3516mm x 1965mm | 11'6" x 6'5" |
| Bedroom 1 | 4260mm x 3222mm | 13'11" x 10'6" |
| Bedroom 2 | 3013mm x 2804mm | 9'10" x 9'2" |

Apartments 94 & 101

| | | |
|--------------------|-----------------|----------------|
| Living/Dining Area | 5530mm x 3528mm | 18'1" x 11'6" |
| Kitchen | 5029mm x 2235mm | 16'5" x 7'3" |
| Bedroom 1 | 4240mm x 3533mm | 13'10" x 11'7" |
| Bedroom 2 | 4239mm x 2400mm | 13'10" x 7'10" |

Apartments 95 & 102

| | | |
|--------------------|-----------------|---------------|
| Living/Dining Area | 4597mm x 4179mm | 15'0" x 13'8" |
| Kitchen | 2446mm x 2134mm | 8'0" x 7'0" |
| Bedroom 1 | 2992mm x 2876mm | 9'9" x 9'5" |
| Bedroom 2 | 2763mm x 2662mm | 9'0" x 8'8" |



2 BEDROOM

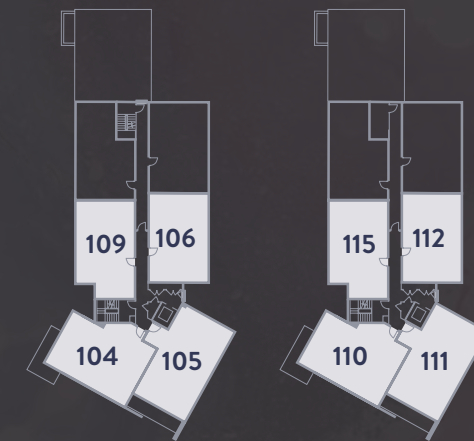
A/C Airing cupboard



MARINA HOUSE

SIDE A

2 BEDROOM APARTMENTS



Third & Fourth Floor

Apartments 104 & 110

| | | |
|--------------------|-----------------|---------------|
| Living/Dining Area | 4170mm x 3751mm | 13'8" x 12'3" |
| Kitchen | 3751mm x 2115mm | 12'3" x 6'11" |
| Bedroom 1 | 3446mm x 3238mm | 11'3" x 10'7" |
| Bedroom 2 | 4459mm x 2500mm | 14'7" x 8'2" |

Apartments 106 & 112

| | | |
|--------------------|-----------------|---------------|
| Living/Dining Area | 4504mm x 3903mm | 14'9" x 12'9" |
| Kitchen | 3391mm x 1813mm | 11'1" x 5'11" |
| Bedroom 1 | 4257mm x 2785mm | 13'11" x 9'1" |
| Bedroom 2 | 3035mm x 2699mm | 9'11" x 8'8" |

Apartments 105 & 111

| | | |
|--------------------|-----------------|---------------|
| Living/Dining Area | 4742mm x 4585mm | 15'6" x 15'0" |
| Kitchen | 3177mm x 1700mm | 10'5" x 5'6" |
| Bedroom 1 | 3191mm x 3021mm | 10'5" x 9'10" |
| Bedroom 2 | 3186mm x 2791mm | 10'5" x 9'1" |

Apartments 109 & 115

| | | |
|--------------------|-----------------|---------------|
| Living/Dining Area | 4320mm x 3583mm | 14'2" x 11'9" |
| Kitchen | 3856mm x 1964mm | 12'7" x 6'5" |
| Bedroom 1 | 4406mm x 4163mm | 14'5" x 13'7" |
| Bedroom 2 | 3036mm x 2699mm | 9'11" x 8'10" |



MARINA HOUSE

SIDE B

2 BEDROOM APARTMENTS



Third & Fourth Floor

Apartments 107 & 113

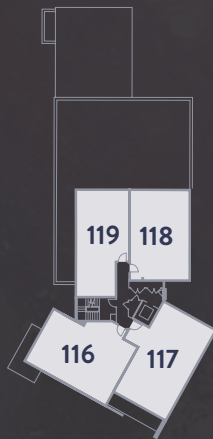
| | | |
|--------------------|-----------------|----------------|
| Living/Dining Area | 4356mm x 3516mm | 14'3" x 11'6" |
| Kitchen | 3516mm x 1965mm | 11'6" x 6'5" |
| Bedroom 1 | 4260mm x 3222mm | 13'11" x 10'6" |
| Bedroom 2 | 3013mm x 2804mm | 9'10" x 9'2" |

Apartments 108 & 114

| | | |
|--------------------|-----------------|---------------|
| Living/Dining Area | 4597mm x 4179mm | 15'0" x 13'8" |
| Kitchen | 2446mm x 2134mm | 8'0" x 7'0" |
| Bedroom 1 | 2992mm x 2876mm | 9'9" x 9'5" |
| Bedroom 2 | 2763mm x 2662mm | 9'0" x 8'8" |

MARINA HOUSE

2 BEDROOM APARTMENTS



Fifth Floor

Apartment 116

| | | |
|--------------------|-----------------|---------------|
| Living/Dining Area | 4170mm x 3751mm | 13'8" x 12'3" |
| Kitchen | 3751mm x 2115mm | 12'3" x 6'11" |
| Bedroom 1 | 3446mm x 3238mm | 11'3" x 10'7" |
| Bedroom 2 | 4459mm x 2500mm | 14'7" x 8'2" |

Apartment 117

| | | |
|--------------------|-----------------|---------------|
| Living/Dining Area | 4742mm x 4585mm | 15'6" x 15'0" |
| Kitchen | 3177mm x 1700mm | 10'5" x 5'6" |
| Bedroom 1 | 3191mm x 3021mm | 10'5" x 9'10" |
| Bedroom 2 | 3186mm x 2791mm | 10'5" x 9'1" |

Apartment 118

| | | |
|-------------|-----------------|----------------|
| Living Area | 3704mm x 3618mm | 12'1" x 11'10" |
| Dining Area | 3208mm x 2112mm | 10'6" x 6'11" |
| Kitchen | 3186mm x 2613mm | 10'5" x 8'6" |
| Bedroom 1 | 3013mm x 2801mm | 9'10" x 9'2" |
| Bedroom 2 | 3013mm x 3001mm | 9'10" x 9'10" |

Apartment 119

| | | |
|--------------------|-----------------|----------------|
| Living/Dining Area | 4526mm x 3673mm | 14'10" x 12'0" |
| Kitchen | 3060mm x 1962mm | 10'0" x 6'5" |
| Bedroom 1 | 3776mm x 3455mm | 12'4" x 11'4" |
| Bedroom 2 | 2617mm x 2399mm | 8'7" x 7'10" |



2 BEDROOM

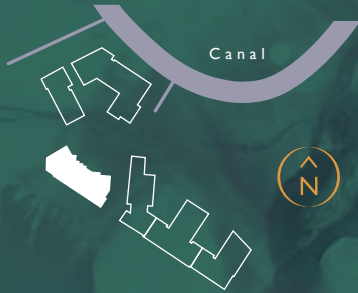
A/C Airing cupboard





DOCKLANDS HOUSE

APARTMENTS 120-146





DOCKLANDS HOUSE SIDE A 1 BEDROOM APARTMENTS



2 BEDROOM
1 BEDROOM
A/C Airing cupboard



Ground Floor

Apartment 120

| | | |
|--------------------|-----------------|---------------|
| Living/Dining Area | 4883mm x 3439mm | 16'0" x 11'3" |
| Kitchen | 2759mm x 2899mm | 9'0" x 9'6" |
| Bedroom | 3862mm x 3246mm | 12'8" x 10'7" |

Apartment 123

| | | |
|--------------------|-----------------|----------------|
| Living/Dining Area | 4450mm x 4198mm | 14'7" x 13'9" |
| Kitchen | 3468mm x 2060mm | 11'4" x 6'9" |
| Bedroom | 3503mm x 3316mm | 11'5" x 10'10" |

Apartment 121

| | | |
|--------------------|-----------------|----------------|
| Living/Dining Area | 3518mm x 4224mm | 11'6" x 13'10" |
| Kitchen | 3139mm x 2060mm | 10'3" x 6'9" |
| Bedroom | 3301mm x 2845mm | 10'9" x 9'4" |

Apartment 124

| | | |
|--------------------|-----------------|----------------|
| Living/Dining Area | 4198mm x 4450mm | 13'9" x 14'7" |
| Kitchen | 3453mm x 2060mm | 11'3" x 6'9" |
| Bedroom | 3503mm x 3316mm | 11'5" x 10'10" |

Apartment 122

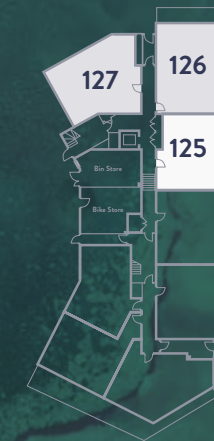
| | | |
|-------------|-----------------|---------------|
| Dining Area | 2775mm x 4480mm | 9'1" x 14'8" |
| Kitchen | 2649mm x 2883mm | 8'8" x 9'5" |
| Living Area | 4498mm x 4427mm | 14'9" x 14'6" |
| Bedroom | 3320mm x 2845mm | 10'10" x 9'4" |



DOCKLANDS HOUSE

SIDE B

1 BEDROOM APARTMENTS



Ground Floor

Apartment 125

| | | |
|--------------------|-----------------|---------------|
| Living/Dining Area | 4703mm x 4423mm | 15'5" x 14'6" |
| Kitchen | 3452mm x 1371mm | 11'3" x 4'5" |
| Bedroom | 3728mm x 3422mm | 12'2" x 11'2" |

Apartment 126

| | | |
|--------------------|-----------------|---------------|
| Living/Dining Area | 4423mm x 3192mm | 14'6" x 10'5" |
| Kitchen | 2606mm x 2010mm | 8'6" x 6'7" |
| Bedroom 1 | 3468mm x 2779mm | 11'4" x 9'1" |
| Bedroom 2 | 3228mm x 2759mm | 10'7" x 9'0" |

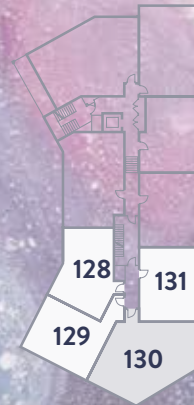
Apartment 127

| | | |
|--------------------|-----------------|---------------|
| Living/Dining Area | 4734mm x 3670mm | 15'6" x 12'0" |
| Kitchen | 2202mm x 2846mm | 7'2" x 9'4" |
| Bedroom 1 | 2615mm x 2809mm | 8'6" x 9'2" |
| Bedroom 2 | 5515mm x 2310mm | 18'1" x 7'6" |

DOCKLANDS HOUSE

SIDE A

1 BEDROOM APARTMENTS



First Floor

Apartment 128

| | | |
|--------------------|-----------------|---------------|
| Living/Dining Area | 4865mm x 2430mm | 16'0" x 11'3" |
| Kitchen | 2150mm x 1510mm | 9'0" x 9'6" |
| Bedroom | 3300mm x 2216mm | 12'8" x 10'7" |

Apartment 129

| | | |
|--------------------|-----------------|----------------|
| Living/Dining Area | 3518mm x 4224mm | 11'6" x 13'10" |
| Kitchen | 3139mm x 2060mm | 10'3" x 6'9" |
| Bedroom | 3301mm x 2845mm | 10'9" x 9'4" |

Apartment 130

| | | |
|--------------------|-----------------|---------------|
| Living/Dining Area | 4958mm x 5560mm | 16'3" x 18'3" |
| Kitchen | 4379mm | |
| Bedroom 1 | 2452mm | |
| Bedroom 2 | 3509mm x 2810mm | 11'6" x 9'3" |

Apartment 131

| | | |
|--------------------|-----------------|---------------|
| Living/Dining Area | 4450mm x 4498mm | 14'7" x 14'7" |
| Kitchen | 3468mm x 2060mm | 11'4" x 6'9" |
| Bedroom | 3503mm x 2316mm | 11'6" x 7'6" |



2 BEDROOM

1 BEDROOM

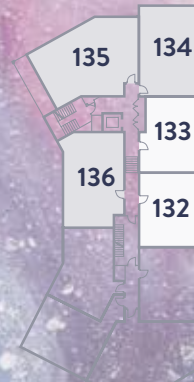
A/C Airing cupboard



DOCKLANDS HOUSE

SIDE B

1 BEDROOM APARTMENTS



First Floor

Apartment 132

| | | |
|--------------------|-----------------|----------------|
| Living/Dining Area | 4195mm x 2445mm | 13'9" x 14'7" |
| Kitchen | 1575mm x 1830mm | 11'3" x 6'9" |
| Bedroom | 3202mm x 3422mm | 11'5" x 10'10" |

Apartment 133

| | | |
|--------------------|-----------------|---------------|
| Living/Dining Area | 4703mm x 4423mm | 15'5" x 14'6" |
| Kitchen | 3452mm x 1371mm | 11'3" x 4'5" |
| Bedroom | 3728mm x 3422mm | 12'2" x 11'2" |

Apartment 134

| | | |
|--------------------|-----------------|---------------|
| Living/Dining Area | 4423mm x 3192mm | 14'6" x 10'5" |
| Kitchen | 2606mm x 2010mm | 8'6" x 6'7" |
| Bedroom 1 | 3468mm x 2779mm | 11'4" x 9'1" |
| Bedroom 2 | 3228mm x 2759mm | 10'7" x 9'0" |

Apartment 135

| | | |
|--------------------|-----------------|----------------|
| Living/Dining Area | 6800mm x 2600mm | 22'5" x 8'5" |
| Kitchen | 5000mm x 2010mm | 16'4" x 6'7" |
| Bedroom 1 | 3660mm x 3422mm | 12'0" x 10'10" |
| Bedroom 2 | 3607mm x 3422mm | 11'8" x 10'10" |

Apartment 136

| | | |
|--------------------|-----------------|---------------|
| Living/Dining Area | 4397mm x 4362mm | 14'5" x 14'3" |
| Kitchen | 3792mm x 2060mm | 12'5" x 6'9" |
| Bedroom 1 | 2835mm x 2897mm | 9'4" x 9'6" |
| Bedroom 2 | 3202mm x 2768mm | 10'6" x 9'1" |



2 BEDROOM

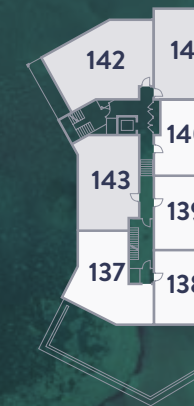
1 BEDROOM

A/C Airing cupboard





DOCKLANDS HOUSE 1 BEDROOM APARTMENTS



Second Floor

Apartment 137

| | | |
|---------------------|-----------------|----------------|
| Living Area | 5683mm x 3646mm | 18'7" x 11'11" |
| Kitchen/Dining Area | 3804mm x 3038mm | 12'5" x 9'11" |
| Bedroom | 3862mm x 2551mm | 12'8" x 8'4" |

Apartment 138

| | | |
|--------------------|-----------------|----------------|
| Living/Dining Area | 4450mm x 4198mm | 14'7" x 13'9" |
| Kitchen | 3468mm x 2060mm | 11'4" x 6'9" |
| Bedroom | 3503mm x 3316mm | 11'5" x 10'10" |

Apartment 139

| | | |
|--------------------|-----------------|----------------|
| Living/Dining Area | 4198mm x 4450mm | 13'9" x 14'7" |
| Kitchen | 3453mm x 2060mm | 11'3" x 6'9" |
| Bedroom | 3503mm x 3316mm | 11'5" x 10'10" |

Apartment 140

| | | |
|--------------------|-----------------|---------------|
| Living/Dining Area | 4703mm x 4423mm | 15'5" x 14'6" |
| Kitchen | 3452mm x 1371mm | 11'3" x 4'5" |
| Bedroom | 3728mm x 3422mm | 12'2" x 11'2" |

Apartment 141

| | | |
|--------------------|-----------------|---------------|
| Living/Dining Area | 4423mm x 3192mm | 14'6" x 10'5" |
| Kitchen | 2606mm x 2010mm | 8'6" x 6'7" |
| Bedroom 1 | 3468mm x 2779mm | 11'4" x 9'1" |
| Bedroom 2 | 3228mm x 2759mm | 10'7" x 9'0" |

Apartment 142

| | | |
|--------------------|-----------------|----------------|
| Living/Dining Area | 6800mm x 2875mm | 22'3" x 9'5" |
| Kitchen | 5000mm x 1500mm | 16'4" x 4'11" |
| Bedroom 1 | 3660mm x 2615mm | 12'0" x 8'6" |
| Bedroom 2 | 3607mm x 5057mm | 11'10" x 16'7" |

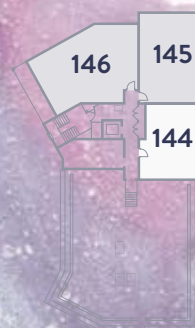
Apartment 143

| | | |
|--------------------|-----------------|---------------|
| Living/Dining Area | 4397mm x 4362mm | 14'5" x 14'3" |
| Kitchen | 3792mm x 2060mm | 12'5" x 6'9" |
| Bedroom 1 | 2835mm x 2897mm | 9'3" x 9'6" |
| Bedroom 2 | 3202mm x 2768mm | 10'6" x 9'0" |

2 BEDROOM
1 BEDROOM
A/C Airing cupboard

DOCKLANDS HOUSE

1 BEDROOM APARTMENTS



Third Floor

Apartment 144

| | | |
|--------------------|-----------------|---------------|
| Living/Dining Area | 4395mm x 2425mm | 15'5" x 14'6" |
| Kitchen | 2150mm x 1800mm | 11'3" x 4'5" |
| Bedroom | 3000mm x 2422mm | 12'2" x 11'2" |

Apartment 145

| | | |
|--------------------|-----------------|---------------|
| Living/Dining Area | 4423mm x 3192mm | 14'6" x 10'5" |
| Kitchen | 2606mm x 2010mm | 8'6" x 6'7" |
| Bedroom 1 | 3468mm x 2779mm | 11'4" x 9'1" |
| Bedroom 2 | 3228mm x 2759mm | 10'7" x 9'0" |

Apartment 146

| | | |
|--------------------|-----------------|--------------|
| Living/Dining Area | 6800mm x 2600mm | 22'6" x 8'6" |
| Kitchen | 5000mm | |
| Bedroom 1 | 3660mm | |
| Bedroom 2 | 3607mm | |



2 BEDROOM

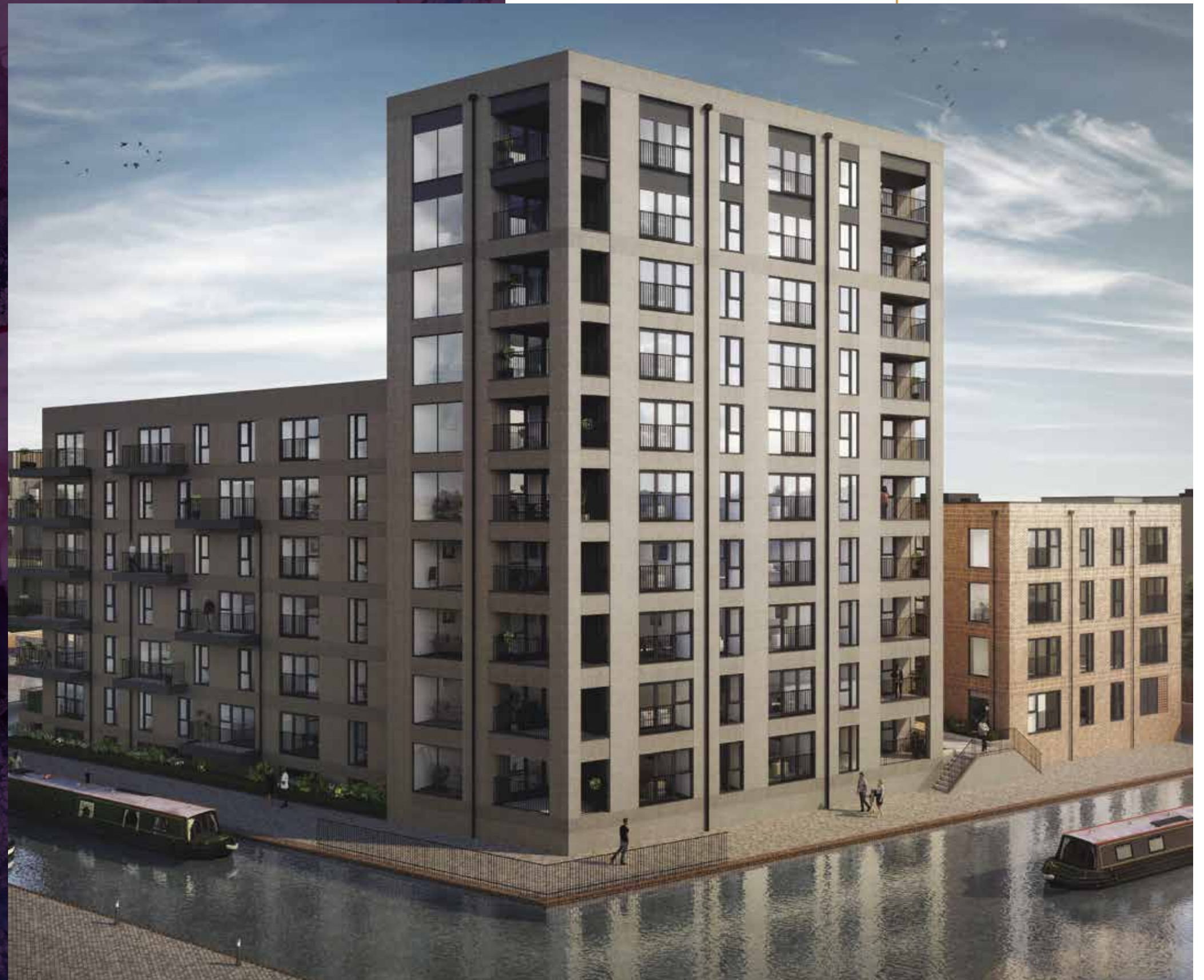
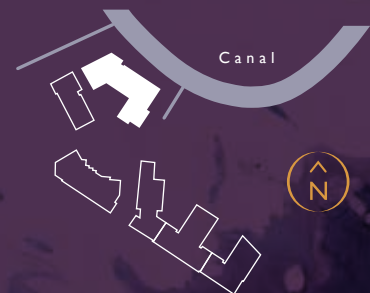
1 BEDROOM

A/C Airing cupboard



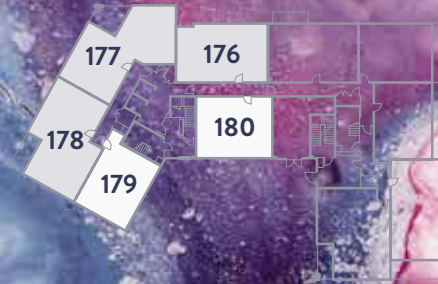
CANAL VIEW

APARTMENTS 171-241





CANAL VIEW SIDE A 1 & 2 BEDROOM APARTMENTS



Ground Floor

Apartment 176

| | | |
|--------------------|-----------------|----------------|
| Living/Dining Area | 3735mm x 3621mm | 12'3" x 11'10" |
| Kitchen | 2560mm x 2421mm | 8'4" x 7'11" |
| Bedroom 1 | 3815mm x 2905mm | 11'6" x 9'6" |
| Bedroom 2 | 3005mm x 2945mm | 9'10" x 9'7" |

Apartment 179

| | | |
|--------------------|-----------------|---------------|
| Living/Dining Area | 4196mm x 3730mm | 13'9" x 12'2" |
| Kitchen | 4335mm x 1963mm | 14'2" x 6'5" |
| Bedroom | 3988mm x 2925mm | 13'1" x 9'7" |

Apartment 177

| | | |
|--------------------|-----------------|---------------|
| Living/Dining Area | 6476mm x 4141mm | 21'2" x 13'7" |
| Kitchen | 4054mm x 2074mm | 13'3" x 6'9" |
| Bedroom 1 | 3901mm x 2699mm | 12'9" x 8'10" |
| Bedroom 2 | 3846mm x 2985mm | 12'7" x 9'9" |

Apartment 180

| | | |
|--------------------|-----------------|---------------|
| Living/Dining Area | 4721mm x 4355mm | 15'5" x 14'3" |
| Kitchen | 3844mm x 2146mm | 12'7" x 7'0" |
| Bedroom | 3575mm x 3260mm | 11'8" x 10'8" |

Apartment 178

| | | |
|--------------------|-----------------|---------------|
| Living/Dining Area | 4765mm x 4057mm | 15'7" x 13'3" |
| Kitchen | 4170mm x 2060mm | 13'8" x 6'9" |
| Bedroom 1 | 4216mm x 3428mm | 13'9" x 11'2" |
| Bedroom 2 | 4682mm x 3195mm | 15'4" x 10'5" |

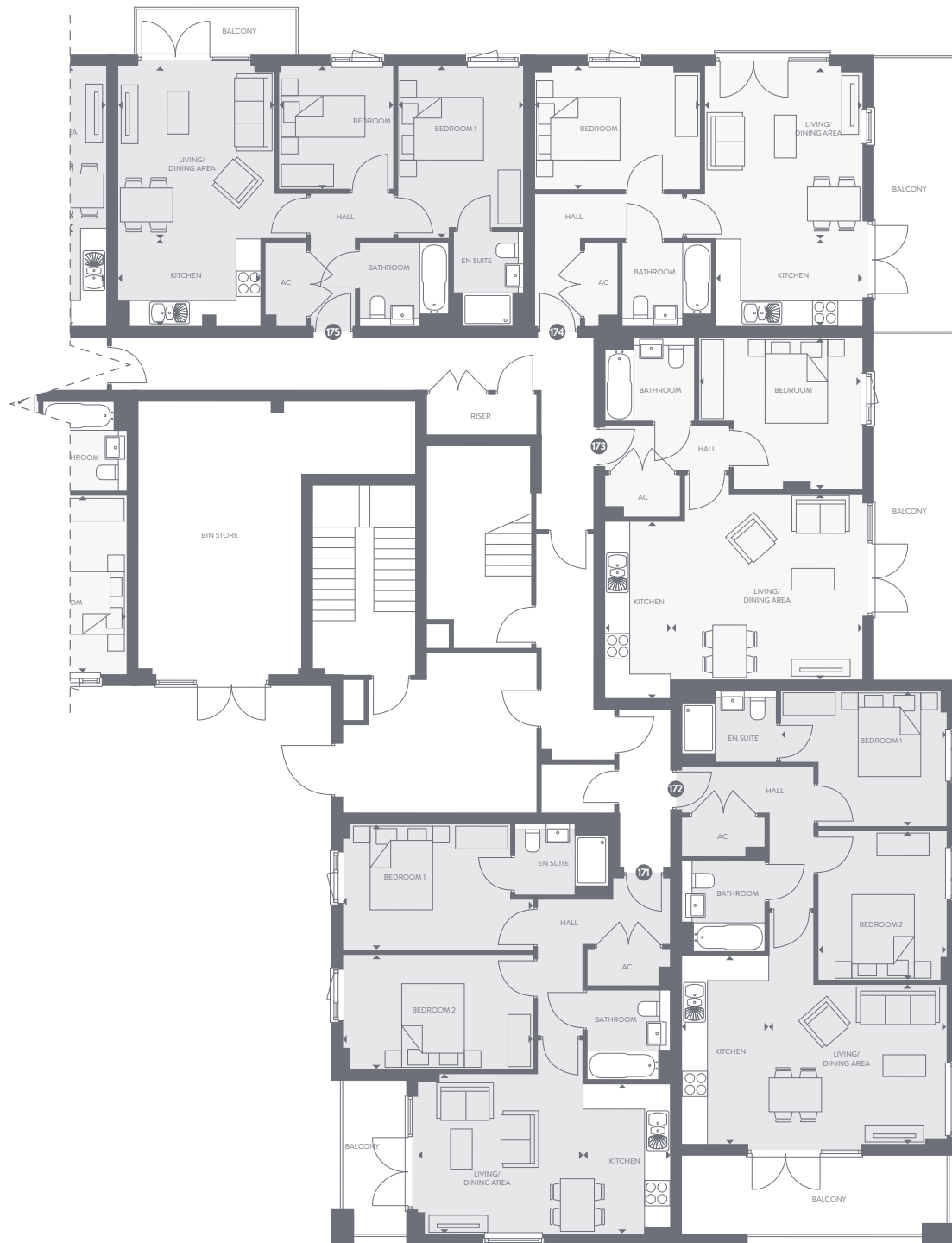


2 BEDROOM

1 BEDROOM

A/C Airing cupboard

Floorplan not to scale



2 BEDROOM

1 BEDROOM

A/C Airing cupboard

Floorplan not to scale

CANAL VIEW

SIDE B

1 & 2 BEDROOM APARTMENTS



Ground Floor

Apartment 171

| | | |
|--------------------|-----------------|----------------|
| Living/Dining Area | 3923mm x 3828mm | 12'10" x 12'6" |
| Kitchen | 3577mm x 2060mm | 11'8" x 6'9" |
| Bedroom 1 | 4546mm x 3003mm | 14'10" x 9'10" |
| Bedroom 2 | 4546mm x 2735mm | 14'10" x 8'11" |

Apartment 172

| | | |
|--------------------|-----------------|----------------|
| Living/Dining Area | 4238mm x 3828mm | 13'10" x 12'6" |
| Kitchen | 4510mm x 2060mm | 14'9" x 6'9" |
| Bedroom 1 | 3968mm x 3235mm | 13'0" x 10'7" |
| Bedroom 2 | 3567mm x 3061mm | 11'8" x 10'0" |

Apartment 173

| | | |
|--------------------|-----------------|----------------|
| Living/Dining Area | 4613mm x 4406mm | 15'1" x 14'5" |
| Kitchen | 4244mm x 1515mm | 13'11" x 4'11" |
| Bedroom | 3897mm x 3600mm | 12'9" x 11'9" |

Apartment 174

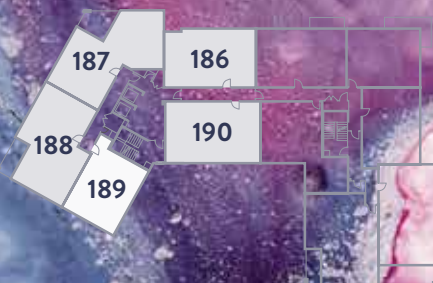
| | | |
|--------------------|-----------------|---------------|
| Living/Dining Area | 4121mm x 3763mm | 13'6" x 12'4" |
| Kitchen | 3493mm x 2061mm | 11'5" x 6'9" |
| Bedroom | 3943mm x 2945mm | 12'11" x 9'7" |

Apartment 175

| | | |
|--------------------|-----------------|---------------|
| Living/Dining Area | 4122mm x 3750mm | 13'6" x 12'3" |
| Kitchen | 3396mm x 2060mm | 11'1" x 6'9" |
| Bedroom 1 | 4121mm x 3012mm | 13'6" x 9'10" |
| Bedroom 2 | 2939mm x 2755mm | 9'7" x 9'0" |

CANAL VIEW SIDE A

1 & 2 BEDROOM APARTMENTS



First Floor

Apartment 186

| | | |
|--------------------|-----------------|----------------|
| Living/Dining Area | 3735mm x 3621mm | 12'3" x 11'10" |
| Kitchen | 2568mm x 2421mm | 8'4" x 7'11" |
| Bedroom 1 | 3515mm x 2905mm | 11'6" x 9'6" |
| Bedroom 2 | 3005mm x 2945mm | 9'10" x 9'7" |

Apartment 187

| | | |
|--------------------|-----------------|---------------|
| Living/Dining Area | 6476mm x 4141mm | 21'2" x 13'7" |
| Kitchen | 4054mm x 2074mm | 13'3" x 6'9" |
| Bedroom 1 | 3901mm x 2699mm | 12'9" x 8'10" |
| Bedroom 2 | 3151mm x 2985mm | 10'4" x 9'9" |

Apartment 188

| | | |
|--------------------|-----------------|---------------|
| Living/Dining Area | 4765mm x 4057mm | 15'7" x 13'3" |
| Kitchen | 4170mm x 2060mm | 13'8" x 6'9" |
| Bedroom 1 | 4216mm x 3428mm | 13'9" x 11'2" |
| Bedroom 2 | 4682mm x 3195mm | 15'4" x 10'5" |

Apartment 189

| | | |
|--------------------|-----------------|---------------|
| Living/Dining Area | 4196mm x 3730mm | 13'9" x 12'2" |
| Kitchen | 4335mm x 1965mm | 14'2" x 6'5" |
| Bedroom | 3988mm x 2925mm | 13'1" x 9'7" |

Apartment 190

| | | |
|--------------------|-----------------|---------------|
| Living/Dining Area | 4440mm x 4305mm | 14'6" x 14'1" |
| Kitchen | 3681mm x 2061mm | 12'0" x 6'9" |
| Bedroom 1 | 4185mm x 3053mm | 13'8" x 10'0" |
| Bedroom 2 | 3263mm x 2611mm | 10'8" x 8'6" |



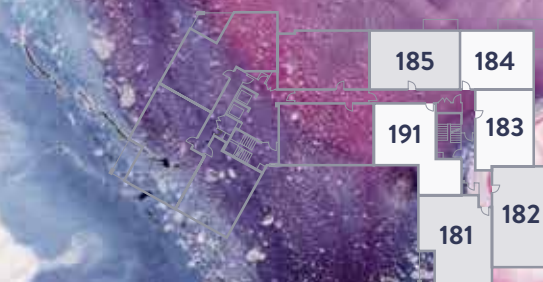
2 BEDROOM

1 BEDROOM

A/C Airing cupboard

Floorplan not to scale

CANAL VIEW SIDE B 1 & 2 BEDROOM APARTMENTS



First Floor

Apartment 181

| | | |
|--------------------|-----------------|----------------|
| Living/Dining Area | 3923mm x 3828mm | 12'10" x 12'6" |
| Kitchen | 3577mm x 2060mm | 11'8" x 6'9" |
| Bedroom 1 | 4546mm x 3908mm | 14'10" x 9'10" |
| Bedroom 2 | 4546mm x 2735mm | 14'10" x 8'11" |

Apartment 182

| | | |
|--------------------|-----------------|----------------|
| Living/Dining Area | 4238mm x 3828mm | 13'10" x 12'6" |
| Kitchen | 4510mm x 2060mm | 14'9" x 6'9" |
| Bedroom 1 | 3968mm x 3235mm | 13'0" x 10'7" |
| Bedroom 2 | 3567mm x 3061mm | 11'8" x 10'0" |

Apartment 183

| | | |
|--------------------|-----------------|----------------|
| Living/Dining Area | 4613mm x 4406mm | 15'1" x 14'5" |
| Kitchen | 4243mm x 1515mm | 13'11" x 4'11" |
| Bedroom | 3897mm x 3600mm | 12'9" x 11'9" |

Apartment 184

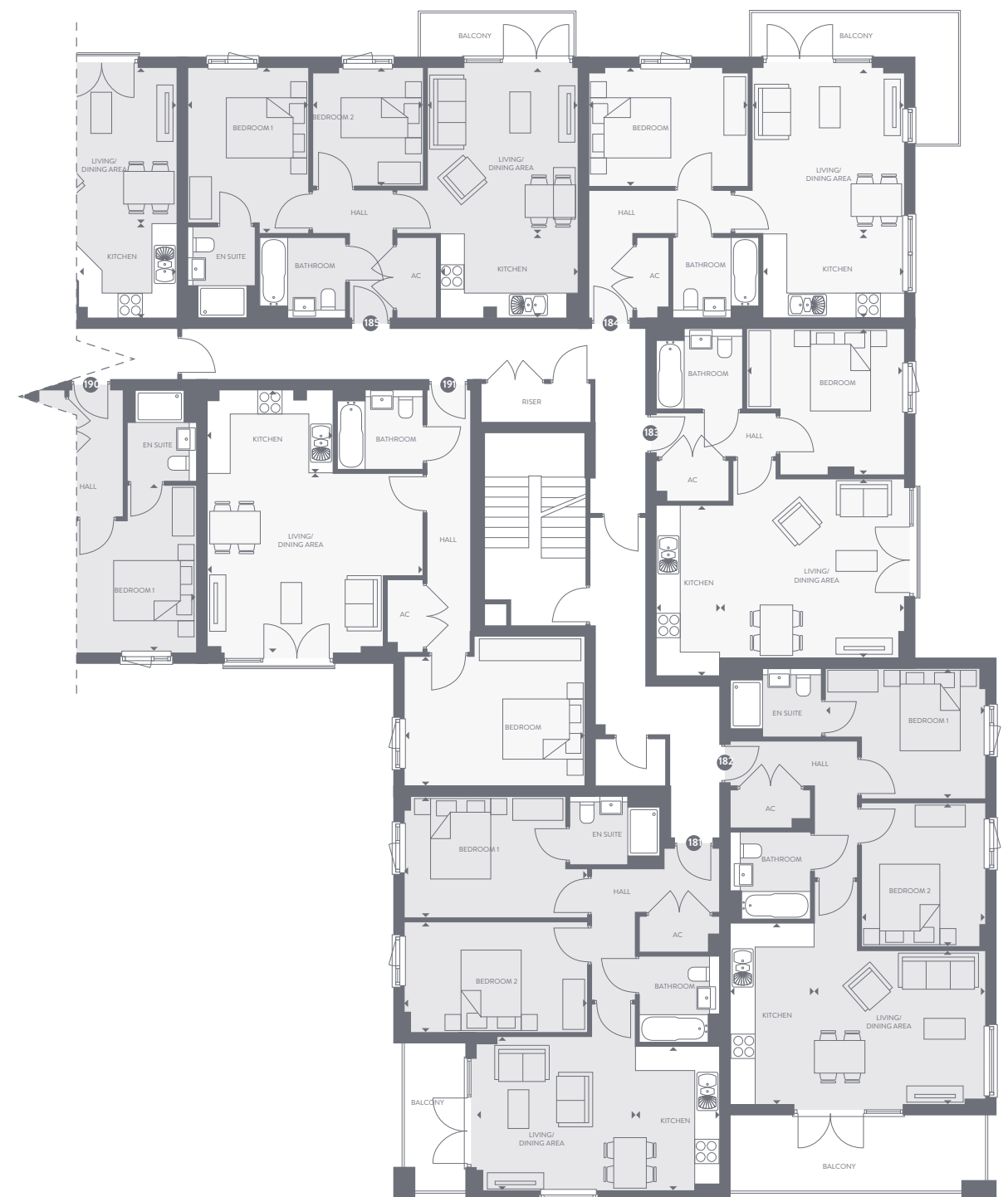
| | | |
|--------------------|-----------------|---------------|
| Living/Dining Area | 4121mm x 3763mm | 13'6" x 12'4" |
| Kitchen | 3493mm x 2061mm | 11'5" x 6'9" |
| Bedroom | 3943mm x 2948mm | 12'11" x 9'7" |

Apartment 185

| | | |
|--------------------|-----------------|---------------|
| Living/Dining Area | 4122mm x 3718mm | 13'6" x 12'2" |
| Kitchen | 3396mm x 2060mm | 11'1" x 6'9" |
| Bedroom 1 | 4121mm x 3009mm | 13'6" x 9'10" |
| Bedroom 2 | 2939mm x 2755mm | 9'7" x 9'0" |

Apartment 191

| | | |
|--------------------|-----------------|---------------|
| Living/Dining Area | 5391mm x 4440mm | 17'8" x 14'6" |
| Kitchen | 3145mm x 2060mm | 10'3" x 6'9" |
| Bedroom | 4463mm x 3164mm | 14'7" x 10'4" |



2 BEDROOM

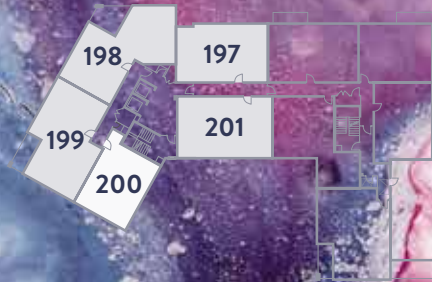
1 BEDROOM

A/C Airing cupboard

Floorplan not to scale



CANAL VIEW SIDE A 1 & 2 BEDROOM APARTMENTS



Second Floor

Apartment 197

| | | |
|--------------------|-----------------|----------------|
| Living/Dining Area | 3735mm x 3622mm | 12'3" x 11'10" |
| Kitchen | 2560mm x 2421mm | 8'4" x 7'11" |
| Bedroom 1 | 3515mm x 2905mm | 11'6" x 9'6" |
| Bedroom 2 | 3605mm x 2945mm | 9'10" x 9'7" |

Apartment 198

| | | |
|--------------------|-----------------|---------------|
| Living/Dining Area | 6476mm x 4141mm | 21'2" x 13'7" |
| Kitchen | 4054mm x 2074mm | 13'3" x 6'9" |
| Bedroom 1 | 3901mm x 2699mm | 12'9" x 8'10" |
| Bedroom 2 | 3846mm x 2985mm | 12'7" x 9'9" |

Apartment 199

| | | |
|--------------------|-----------------|---------------|
| Living/Dining Area | 4765mm x 4057mm | 15'7" x 13'3" |
| Kitchen | 4170mm x 2060mm | 13'8" x 6'9" |
| Bedroom 1 | 4216mm x 3428mm | 13'9" x 11'2" |
| Bedroom 2 | 4682mm x 3195mm | 15'4" x 10'5" |

Apartment 200

| | | |
|--------------------|-----------------|---------------|
| Living/Dining Area | 4196mm x 3730mm | 13'9" x 12'2" |
| Kitchen | 4335mm x 1963mm | 14'2" x 6'5" |
| Bedroom | 3988mm x 2925mm | 13'1" x 9'7" |

Apartment 201

| | | |
|--------------------|-----------------|---------------|
| Living/Dining Area | 4440mm x 4305mm | 14'6" x 14'1" |
| Kitchen | 3681mm x 2061mm | 12'0" x 6'9" |
| Bedroom 1 | 4185mm x 3053mm | 13'8" x 10'0" |
| Bedroom 2 | 3263mm x 2611mm | 10'8" x 8'6" |



2 BEDROOM

1 BEDROOM

A/C Airing cupboard

Floorplan not to scale



2 BEDROOM

1 BEDROOM

A/C Airing cupboard

Floorplan not to scale

CANAL VIEW

SIDE B

1 & 2 BEDROOM APARTMENTS



Second Floor

Apartment 192

| | | |
|--------------------|-----------------|----------------|
| Living/Dining Area | 3923mm x 3828mm | 12'10" x 12'6" |
| Kitchen | 3577mm x 2060mm | 11'8" x 6'9" |
| Bedroom 1 | 4546mm x 3008mm | 14'10" x 9'10" |
| Bedroom 2 | 4546mm x 2735mm | 14'10" x 8'11" |

Apartment 193

| | | |
|--------------------|-----------------|----------------|
| Living/Dining Area | 4238mm x 3828mm | 13'10" x 12'6" |
| Kitchen | 4510mm x 2060mm | 14'9" x 6'9" |
| Bedroom 1 | 3968mm x 3235mm | 13'0" x 10'7" |
| Bedroom 2 | 3567mm x 3061mm | 11'8" x 10'0" |

Apartment 194

| | | |
|--------------------|-----------------|----------------|
| Living/Dining Area | 4613mm x 4406mm | 15'1" x 14'5" |
| Kitchen | 4243mm x 1515mm | 13'11" x 4'11" |
| Bedroom | 3897mm x 3600mm | 12'9" x 11'9" |

Apartment 195

| | | |
|--------------------|-----------------|---------------|
| Living/Dining Area | 4121mm x 3763mm | 13'6" x 12'4" |
| Kitchen | 3493mm x 2061mm | 11'5" x 6'9" |
| Bedroom | 3943mm x 2945mm | 12'11" x 9'8" |

Apartment 196

| | | |
|--------------------|-----------------|---------------|
| Living/Dining Area | 4122mm x 3750mm | 13'6" x 12'3" |
| Kitchen | 3396mm x 2060mm | 11'1" x 6'9" |
| Bedroom 1 | 4121mm x 3012mm | 13'6" x 9'10" |
| Bedroom s2 | 2939mm x 2755mm | 9'7" x 9'0" |

Apartment 202

| | | |
|--------------------|-----------------|---------------|
| Living/Dining Area | 5391mm x 4440mm | 17'8" x 14'5" |
| Kitchen | 3146mm x 2060mm | 10'3" x 6'9" |
| Bedroom | 4463mm x 3164mm | 14'7" x 10'4" |

CANAL VIEW SIDE A 1 & 2 BEDROOM APARTMENTS



Third and Fifth Floor

Apartments 206 & 224

| | | |
|--------------------|-----------------|----------------|
| Living/Dining Area | 3735mm x 3622mm | 12'3" x 11'10" |
| Kitchen | 2560mm x 2421mm | 8'4" x 7'11" |
| Bedroom 1 | 3515mm x 2905mm | 11'6" x 9'6" |
| Bedroom 2 | 3005mm x 2945mm | 9'10" x 9'7" |

Apartments 207 & 225

| | | |
|--------------------|-----------------|---------------|
| Living/Dining Area | 6476mm x 4141mm | 21'2" x 13'7" |
| Kitchen | 4054mm x 2074mm | 13'3" x 6'9" |
| Bedroom 1 | 3901mm x 2699mm | 12'9" x 8'10" |
| Bedroom 2 | 3846mm x 2985mm | 12'7" x 9'9" |

Apartments 208 & 226

| | | |
|--------------------|-----------------|---------------|
| Living/Dining Area | 4765mm x 4057mm | 15'7" x 13'3" |
| Kitchen | 4170mm x 2060mm | 13'8" x 6'9" |
| Bedroom 1 | 4216mm x 3428mm | 13'9" x 11'2" |
| Bedroom 2 | 4682mm x 3195mm | 15'4" x 10'5" |

Apartments 209 & 227

| | | |
|--------------------|-----------------|---------------|
| Living/Dining Area | 4196mm x 3730mm | 13'9" x 12'2" |
| Kitchen | 4335mm x 1963mm | 14'2" x 6'5" |
| Bedroom | 3989mm x 2925mm | 13'1" x 9'7" |

Apartments 210 & 228

| | | |
|--------------------|-----------------|---------------|
| Living/Dining Area | 4440mm x 4305mm | 14'6" x 14'1" |
| Kitchen | 3681mm x 2061mm | 12'0" x 6'9" |
| Bedroom 1 | 4185mm x 3053mm | 13'8" x 10'0" |
| Bedroom 2 | 3263mm x 2611mm | 10'8" x 8'6" |



2 BEDROOM

1 BEDROOM

A/C Airing cupboard

Floorplan not to scale

CANAL VIEW SIDE B 1 & 2 BEDROOM APARTMENTS



Third & Fifth Floor

Apartments 203 & 221

| | | |
|--------------------|-----------------|---------------|
| Living/Dining Area | 4315mm x 3897mm | 14'1" x 12'9" |
| Kitchen | 3660mm x 2230mm | 12'0" x 7'3" |
| Bedroom | 3600mm x 2721mm | 11'9" x 8'11" |

Apartments 204 & 222

| | | |
|--------------------|-----------------|---------------|
| Living/Dining Area | 4121mm x 3763mm | 13'6" x 12'4" |
| Kitchen | 3493mm x 2061mm | 11'5" x 6'9" |
| Bedroom | 3943mm x 2945mm | 12'11" x 9'7" |

Apartments 205 & 223

| | | |
|--------------------|-----------------|---------------|
| Living/Dining Area | 4122mm x 3750mm | 13'6" x 12'3" |
| Kitchen | 3396mm x 2060mm | 11'1" x 6'9" |
| Bedroom 1 | 4121mm x 3019mm | 13'6" x 9'10" |
| Bedroom 2 | 2939mm x 2755mm | 9'7" x 9'0" |

Apartments 211 & 229

| | | |
|--------------------|-----------------|---------------|
| Living/Dining Area | 5362mm x 3463mm | 17'7" x 11'4" |
| Kitchen | 4418mm x 1185mm | 14'6" x 3'10" |
| Bedroom 1 | 4170mm x 3237mm | 13'8" x 10'7" |
| Bedroom 2 | 3257mm x 2794mm | 10'8" x 9'2" |



2 BEDROOM

1 BEDROOM

A/C Airing cupboard

Floorplan not to scale



2 BEDROOM

1 BEDROOM

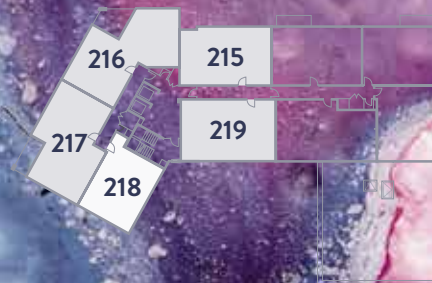
A/C Airing cupboard

Floorplan not to scale

CANAL VIEW

SIDE A

1 & 2 BEDROOM APARTMENTS



Fourth Floor

Apartment 215

| | | |
|--------------------|-----------------|----------------|
| Living/Dining Area | 3735mm x 3622mm | 12'3" x 11'10" |
| Kitchen | 2560mm x 2421mm | 8'4" x 7'11" |
| Bedroom 1 | 3615mm x 2905mm | 11'6" x 9'6" |
| Bedroom 2 | 3005mm x 2945mm | 9'10" x 9'7" |

Apartment 216

| | | |
|--------------------|-----------------|---------------|
| Living/Dining Area | 6476mm x 4141mm | 21'2" x 13'7" |
| Kitchen | 4054mm x 2074mm | 13'3" x 6'9" |
| Bedroom 1 | 3901mm x 2699mm | 12'9" x 8'10" |
| Bedroom 2 | 3846mm x 2985mm | 12'7" x 9'9" |

Apartment 217

| | | |
|--------------------|-----------------|---------------|
| Living/Dining Area | 4765mm x 4057mm | 15'7" x 13'3" |
| Kitchen | 4170mm x 2060mm | 13'8" x 6'9" |
| Bedroom 1 | 4216mm x 3428mm | 13'9" x 11'2" |
| Bedroom 2 | 4682mm x 3195mm | 15'4" x 10'5" |

Apartment 218

| | | |
|--------------------|-----------------|---------------|
| Living/Dining Area | 4196mm x 3730mm | 13'9" x 12'2" |
| Kitchen | 4335mm x 1963mm | 14'2" x 6'5" |
| Bedroom | 3988mm x 2925mm | 13'1" x 9'7" |

Apartment 219

| | | |
|--------------------|-----------------|---------------|
| Living/Dining Area | 4440mm x 4305mm | 14'6" x 14'1" |
| Kitchen | 3681mm x 2061mm | 12'0" x 6'9" |
| Bedroom 1 | 4185mm x 3053mm | 13'8" x 10'0" |
| Bedroom 2 | 3263mm x 2611mm | 10'8" x 8'6" |



CANAL VIEW SIDE B 1 & 2 BEDROOM APARTMENTS



Fourth Floor

Apartment 212

| | | |
|--------------------|-----------------|---------------|
| Living/Dining Area | 4315mm x 3897mm | 14'1" x 12'9" |
| Kitchen | 3660mm x 2230mm | 12'0" x 7'3" |
| Bedroom | 3600mm x 2721mm | 11'9" x 8'11" |

Apartment 213

| | | |
|--------------------|-----------------|---------------|
| Living/Dining Area | 4121mm x 3763mm | 13'6" x 12'4" |
| Kitchen | 3493mm x 2061mm | 11'5" x 6'9" |
| Bedroom | 3943mm x 2945mm | 12'11" x 9'7" |

Apartment 214

| | | |
|--------------------|-----------------|---------------|
| Living/Dining Area | 4122mm x 3750mm | 13'6" x 12'3" |
| Kitchen | 3396mm x 2080mm | 11'1" x 6'9" |
| Bedroom 1 | 4121mm x 3018mm | 13'6" x 9'10" |
| Bedroom 2 | 2939mm x 2755mm | 9'7" x 9'0" |

Apartment 220

| | | |
|--------------------|-----------------|---------------|
| Living/Dining Area | 5362mm x 3463mm | 17'7" x 11'4" |
| Kitchen | 4418mm x 1857mm | 14'5" x 6'1" |
| Bedroom 1 | 4170mm x 3237mm | 13'8" x 10'7" |
| Bedroom 2 | 3257mm x 2794mm | 10'8" x 9'2" |

- 2 BEDROOM
- 1 BEDROOM

A/C Airing cupboard
Floorplan not to scale

CANAL VIEW

1 & 2 BEDROOM APARTMENTS



Sixth, Seventh, Eighth & Ninth Floor

Apartments 230, 233, 236 & 239

| | | |
|--------------------|-----------------|---------------|
| Living/Dining Area | 4196mm x 3730mm | 13'9" x 12'2" |
| Kitchen | 4355mm x 1963mm | 14'2" x 6'5" |
| Bedroom | 3988mm x 2925mm | 13'1" x 9'7" |

Apartments 231, 234, 237 & 240

| | | |
|--------------------|-----------------|---------------|
| Living/Dining Area | 6476mm x 4141mm | 21'2" x 13'7" |
| Kitchen | 4054mm x 2074mm | 13'3" x 6'9" |
| Bedroom 1 | 3901mm x 2699mm | 12'9" x 8'10" |
| Bedroom 2 | 3846mm x 2985mm | 12'7" x 9'9" |

Apartments 232, 235, 238 & 241

| | | |
|--------------------|-----------------|---------------|
| Living/Dining Area | 4765mm x 4057mm | 15'7" x 13'3" |
| Kitchen | 4170mm x 2060mm | 13'8" x 6'9" |
| Bedroom 1 | 4216mm x 3428mm | 13'9" x 11'2" |
| Bedroom 2 | 4682mm x 3180mm | 15'4" x 10'5" |

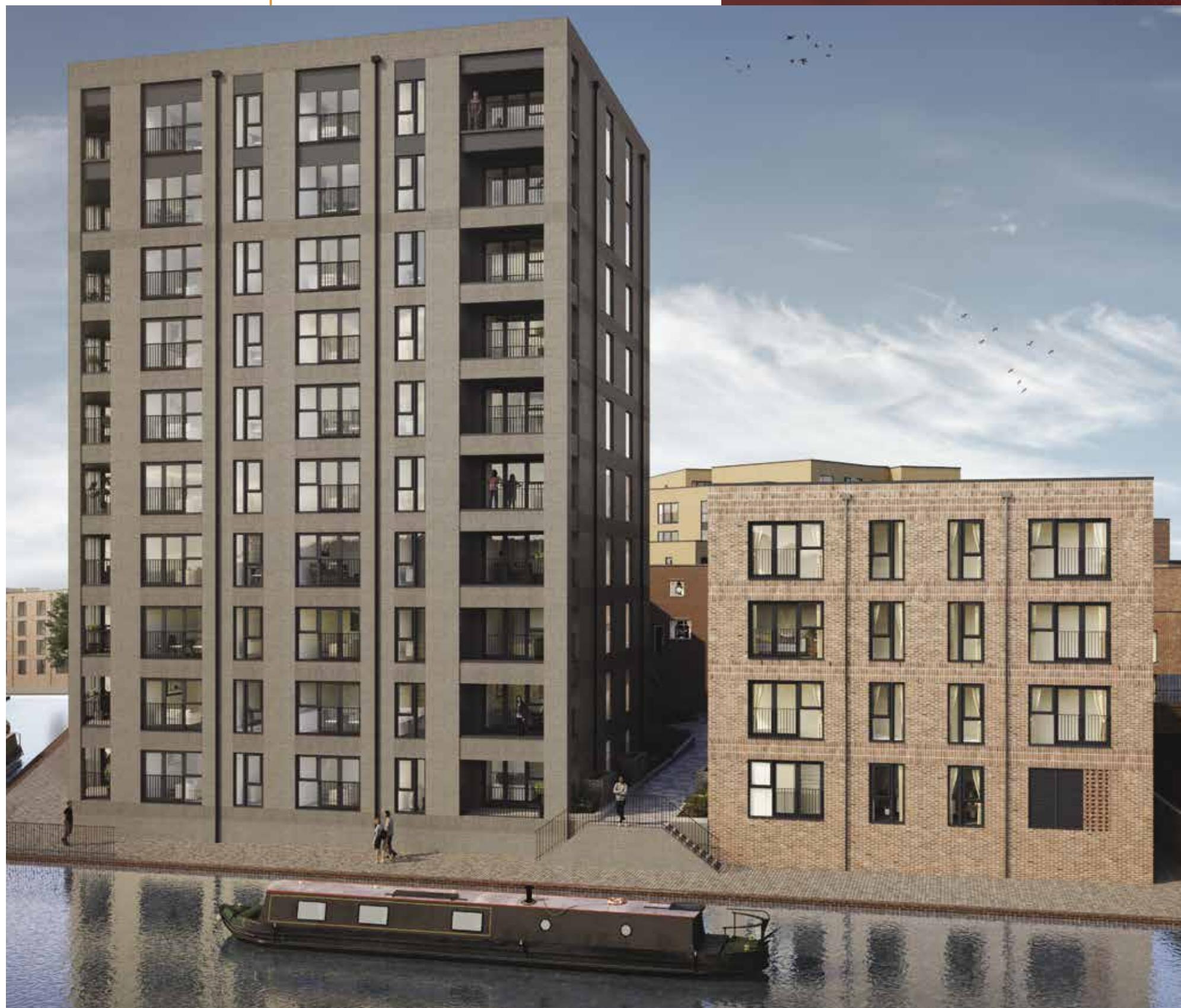


2 BEDROOM

1 BEDROOM

A/C Airing cupboard

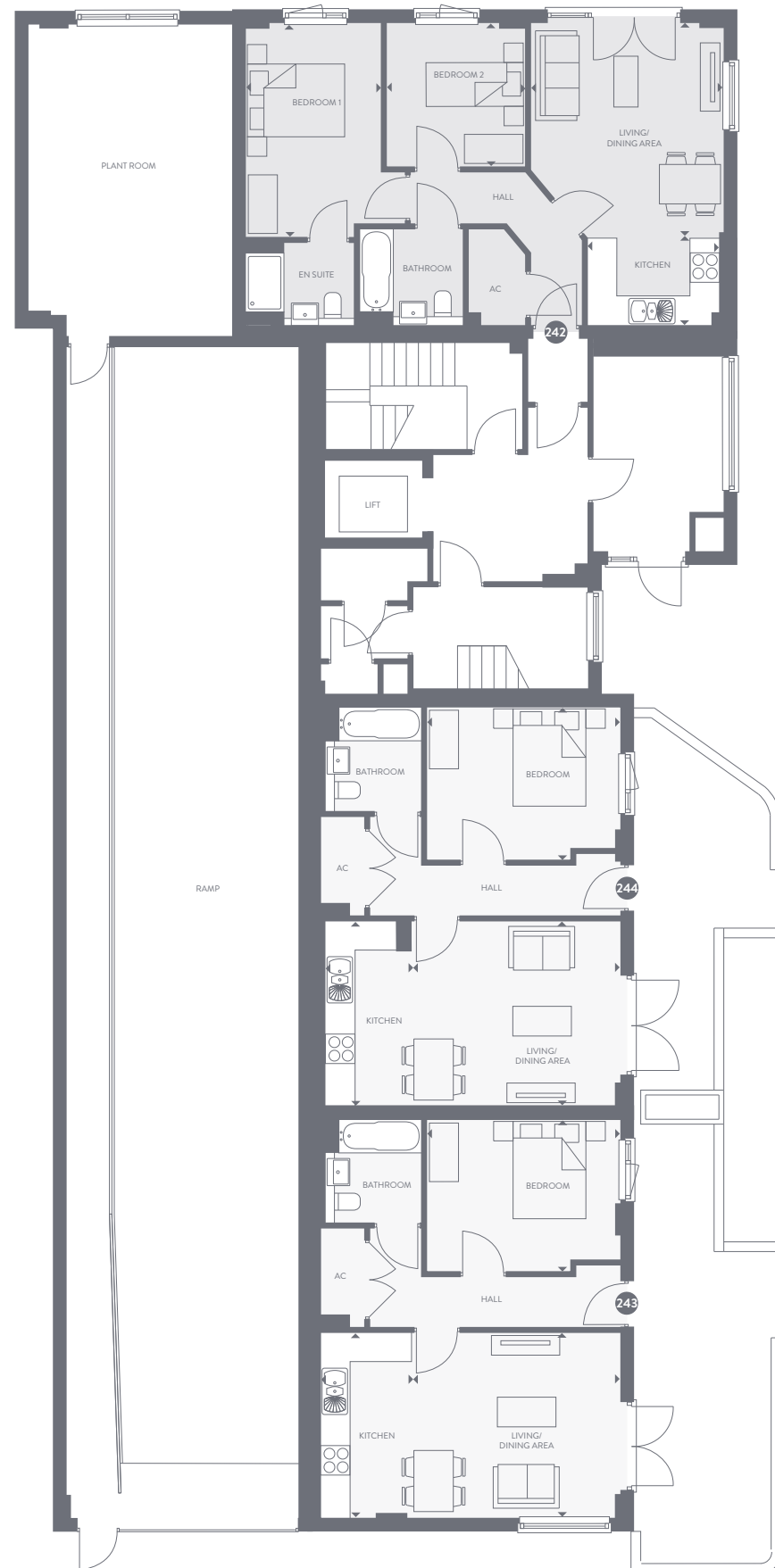
Floorplan not to scale



THE MOORINGS

APARTMENTS 242-254





- 2 BEDROOM
- 1 BEDROOM
- A/C Airing cupboard

THE MOORINGS

1 & 2 BEDROOM APARTMENTS



Ground Floor

Apartment 242

| | | |
|--------------------|-----------------|---------------|
| Living/Dining Area | 4401mm x 3973mm | 14'5" x 13'0" |
| Kitchen | 2706mm x 1774mm | 8'10" x 5'9" |
| Bedroom 1 | 4395mm x 2790mm | 14'5" x 9'1" |
| Bedroom 2 | 2938mm x 2873mm | 9'7" x 9'5" |

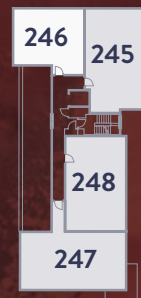
Apartment 244

| | | |
|--------------------|-----------------|---------------|
| Living/Dining Room | 4295mm x 3809mm | 14'1" x 12'5" |
| Kitchen | 3809mm x 1840mm | 12'5" x 6'0" |
| Bedroom | 3972mm x 3141mm | 13'0" x 10'3" |

Apartment 243

| | | |
|--------------------|-----------------|---------------|
| Living/Dining Area | 4282mm x 3809mm | 14'0" x 12'5" |
| Kitchen | 3809mm x 1853mm | 12'5" x 6'1" |
| Bedroom | 3972mm x 3141mm | 13'0" x 10'3" |

THE MOORINGS



First Floor

Apartment 245

| | | |
|--------------------|-----------------|---------------|
| Living/Dining Area | 4375mm x 4011mm | 14'4" x 13'1" |
| Kitchen | 4834mm x 2063mm | 15'10" x 6'9" |
| Bedroom 1 | 3561mm x 3527mm | 11'8" x 11'6" |
| Bedroom 2 | 3058mm x 3021mm | 10'0" x 9'10" |

Apartment 246

| | | |
|--------------------|-----------------|----------------|
| Living/Dining Area | 4076mm x 4326mm | 13'4" x 14'2" |
| Kitchen | 3360mm x 1906mm | 11'0" x 6'3" |
| Bedroom | 4837mm x 3174mm | 15'10" x 10'4" |

Apartment 247

| | | |
|--------------------|-----------------|---------------|
| Living/Dining Area | 4370mm x 4119mm | 14'4" x 13'6" |
| Kitchen | 4370mm x 2060mm | 14'4" x 6'9" |
| Bedroom 1 | 3765mm x 3015mm | 12'4" x 9'10" |
| Bedroom 2 | 3808mm x 2942mm | 12'5" x 9'7" |

Apartment 248

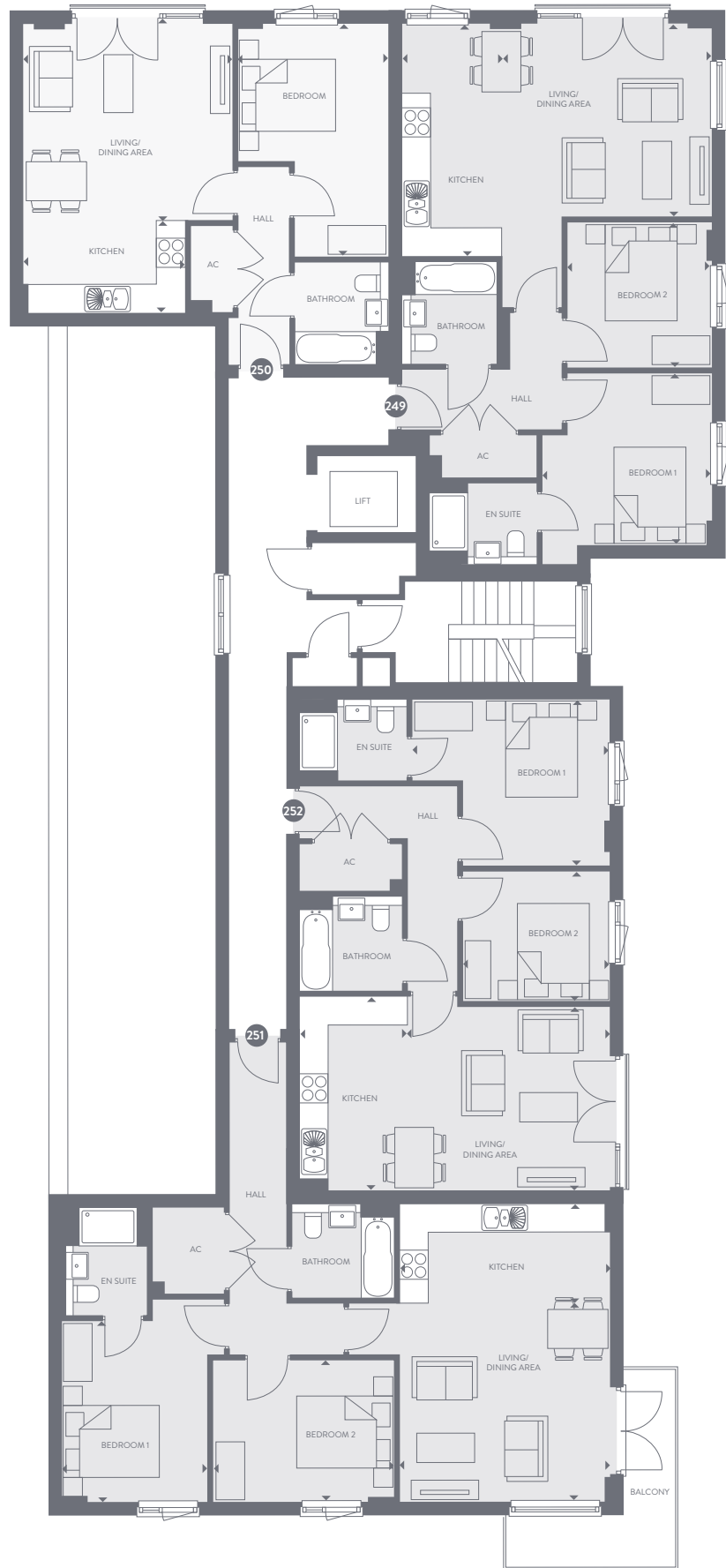
| | | |
|--------------------|-----------------|----------------|
| Living/Dining Area | 4219mm x 3826mm | 13'10" x 12'6" |
| Kitchen | 4042mm x 2231mm | 13'3" x 7'3" |
| Bedroom 1 | 4105mm x 3462mm | 13'5" x 11'4" |
| Bedroom 2 | 3055mm x 2723mm | 10'0" x 8'11" |



2 BEDROOM

1 BEDROOM

A/C Airing cupboard



2 BEDROOM
1 BEDROOM
A/C Airing cupboard

THE MOORINGS



Second Floor

Apartment 249

| | | |
|--------------------|-----------------|---------------|
| Living/Dining Area | 4375mm x 4011mm | 14'4" x 13'1" |
| Kitchen | 4834mm x 2063mm | 15'10" x 6'9" |
| Bedroom 1 | 3561mm x 3527mm | 11'8" x 11'6" |
| Bedroom 2 | 3058mm x 3021mm | 10'0" x 9'10" |

Apartment 250

| | | |
|--------------------|-----------------|----------------|
| Living/Dining Area | 4076mm x 4326mm | 13'4" x 14'2" |
| Kitchen | 3360mm x 1906mm | 11'0" x 6'3" |
| Bedroom | 4837mm x 3174mm | 15'10" x 10'4" |

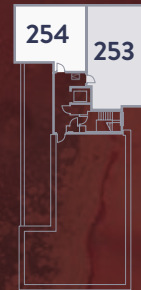
Apartment 251

| | | |
|--------------------|-----------------|---------------|
| Living/Dining Area | 4370mm x 4119mm | 14'4" x 13'6" |
| Kitchen | 4370mm x 2060mm | 14'4" x 6'9" |
| Bedroom 1 | 3765mm x 3015mm | 12'4" x 9'10" |
| Bedroom 2 | 3808mm x 2942mm | 12'5" x 9'7" |

Apartment 252

| | | |
|--------------------|-----------------|----------------|
| Living/Dining Area | 4219mm x 3826mm | 13'10" x 12'6" |
| Kitchen | 4042mm x 2231mm | 13'3" x 7'3" |
| Bedroom 1 | 4105mm x 3462mm | 13'5" x 11'4" |
| Bedroom 2 | 3055mm x 2723mm | 10'0" x 8'11" |

THE MOORINGS



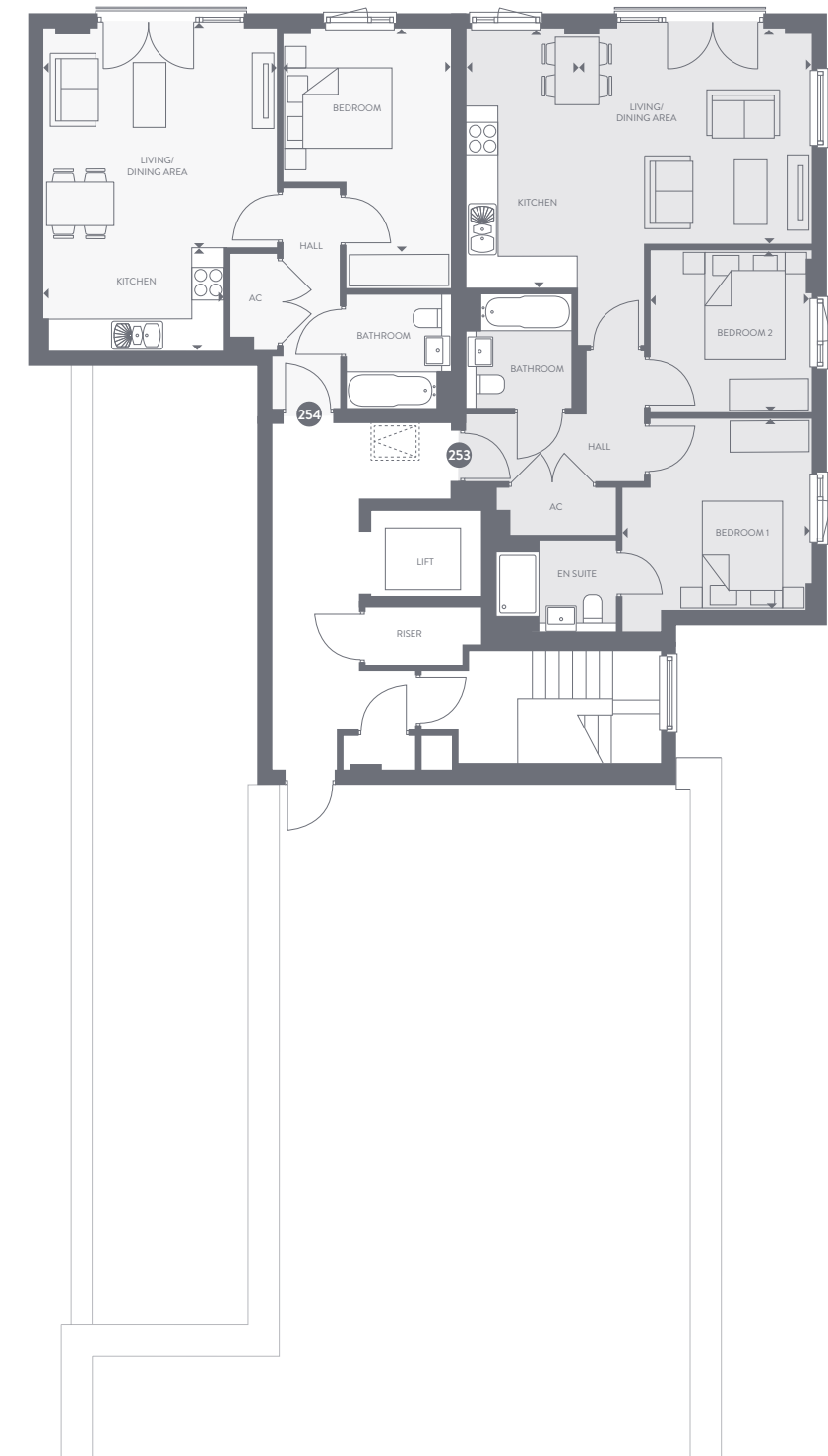
Third Floor

Apartment 253

| | | |
|--------------------|-----------------|---------------|
| Living/Dining Area | 4375mm x 4011mm | 14'4" x 13'1" |
| Kitchen | 4834mm x 2063mm | 15'10" x 6'9" |
| Bedroom 1 | 3561mm x 3527mm | 11'8" x 11'6" |
| Bedroom 2 | 3058mm x 3021mm | 10'0" x 9'10" |

Apartment 254

| | | |
|--------------------|-----------------|----------------|
| Living/Dining Area | 4076mm x 4326mm | 13'4" x 14'2" |
| Kitchen | 3360mm x 1906mm | 11'0" x 6'3" |
| Bedroom | 4837mm x 3174mm | 15'10" x 10'4" |



2 BEDROOM

1 BEDROOM

A/C Airing cupboard

Ultima at Sherborne Wharf
Sherborne Street, Birmingham
West Midlands B16 8FN

0121 435 0690

www.crestnicholson.com/ultimaatsherbornewharf

ultimaatsherbornewharf@crestnicholson.com



Whilst every effort has been made to ensure that the information in this brochure is correct, it is designed specifically as a broad indicative guide only and Crest Nicholson reserves the right to amend the specification at its absolute discretion as necessary and without any formal notice of any changes made. This brochure does not in any way constitute or form any part of a contract of sale transfer or lease. Photography taken at similar Crest Nicholson developments and computer generated images are indicative only. Please note, the digital illustrations may not accurately depict elevation materials, gradients, landscaping or street furniture. All stated dimensions are subject to tolerances of +/- 50mm. You are strongly advised, therefore, not to order any carpets, appliances or any other goods which depend on accurate dimensions before carrying out a check measure within your reserved apartment. Kitchen layouts are again indicative only and are subject to change before completion. This does not constitute or form any part of a contract of sale transfer or lease unless any point that you specifically want to rely on is confirmed in writing by Crest Nicholson and referred to in the contract. Please ask a Sales Advisor for further details. March 2019.



Crest
NICHOLSON