



Family home in sought after town location

1 Oakleigh Court, Bishop's Stortford, Hertfordshire, CM23 2RT

Freehold



Beautifully presented, modern detached home • Flexible and spacious family accommodation • Fabulous contemporary kitchen/family room • Located on one of the most sought after roads in town • Private driveway, double garaging and office • Just 0.4 miles from Bishop's Stortford College • Ideal for commuter access to London

Long Description

A rare opportunity to acquire a beautifully presented, detached home situated on one of the most popular roads in Bishop's Stortford. Internally there is well-balanced and spacious accommodation with the principle reception rooms accessed from the spacious entrance hall. The kitchen offers a stunning family living space skilfully blending contemporary and traditional styles, with a circular breakfast bar and banquette-style dining area. Bi-fold doors lead out onto the patio and into the garden, perfect for entertaining. The utility room also provides access to the side passage. The sitting room with feature fireplace benefits from patio doors to the rear. A dual aspect reception room to the front of the house is currently used as playroom. The guest cloakroom completes the ground floor accommodation.

Upstairs there are four good sized bedrooms, two of which enjoy a garden aspect. The impressive master suite with vaulted ceiling benefits from an en suite shower room and dressing room. The second bedroom also has its own en suite shower room. The remaining bedrooms share the family bathroom.

The house is situated in a generous and secluded spot set back away from the road

with front and rear gardens.

The driveway, located to the front of the property, provides access to the detached double garage which also benefits from an office to the rear. The private rear garden is beautifully landscaped with a variety of seating areas, bordered by hedging and mature trees. A useful barked space to the side provides a great spot for a children's play area.

Local Info

Located just off popular Maple Avenue, one of the most sought after roads in Bishop's Stortford, Oakleigh Court is a private collection of just three properties ideally located for Bishop's Stortford College (0.3 miles approx.) and the railway station with commuter links to London Liverpool Street (from 38 minutes approx.).

The town offers a variety of shopping and sporting facilities including Mint Velvet, H&M, Waitrose, cinema, two leisure centres and a wide selection of pubs, bars and restaurants.

There is also excellent schooling available at Hockerill and The Hertfordshire & Essex High School among others. Access is available to the M11 motorway at junction 8, providing access to the A1, Cambridge, the M25 and London.





Directions

From our office on North Street, proceed north to the mini roundabout turning left on to Hadham Road. Proceed straight over the next mini roundabout and continue along Hadham Road turning left on to Maple Avenue. Take the first right into Oakleigh Court where you will find the house on the far right.

Energy Performance

A copy of the full Energy Performance Certificate is available upon request.

Viewing

Strictly by appointment with Savills.



1 Oakleigh Court, Bishop's Stortford, Hertfordshire, CM23 2RT

Approximate Area 180.4 sq m / 1942 sq ft

Garage 24.6 sq m / 265 sq ft

Study 15.1 sq m / 162 sq ft

Total 220.1 sq m / 2369 sq ft

Including Limited Use Area (0.3 sq m / 3 sq ft)



savills

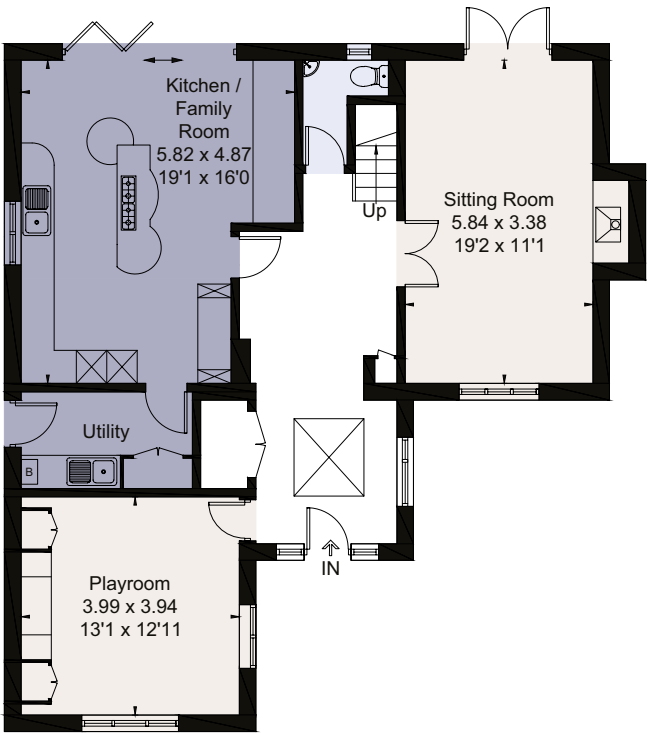
savills.co.uk

Hannah Tomlin

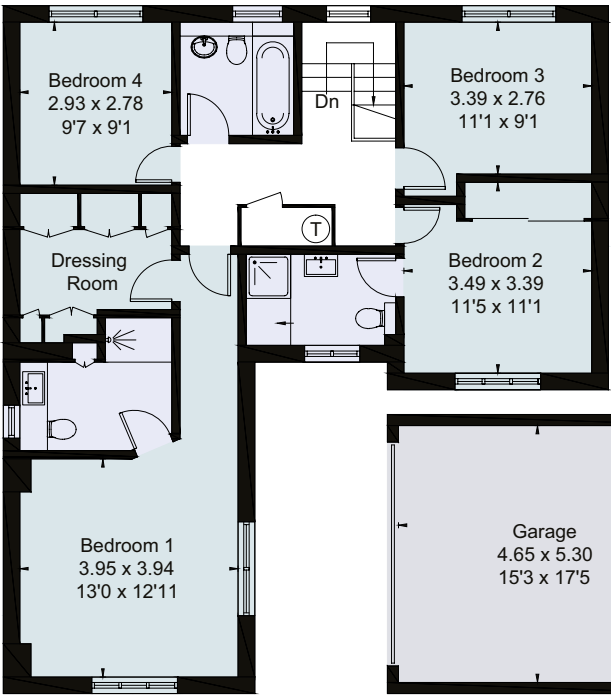
Savills Bishop's Stortford

01279 756801

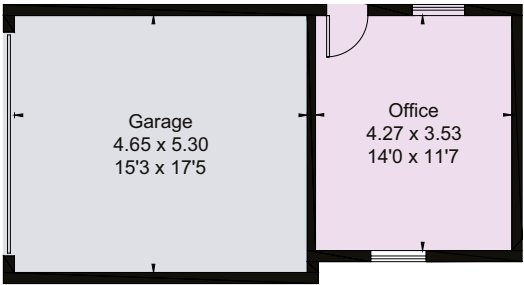
bishopsstortford@savills.com



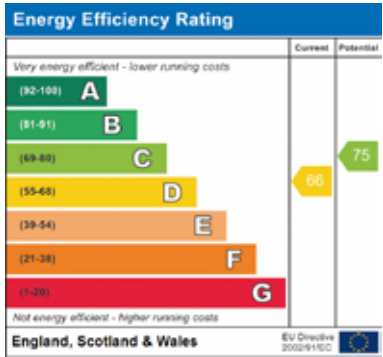
Ground Floor



First Floor



(Not Shown In Actual
Location / Orientation)



For identification only. Not to scale. © 200113HT

Important notice Savills, its clients and any joint agents give notice that 1: They are not authorised to make or give any representations or warranties in relation to the property either here or elsewhere, either on their own behalf or on behalf of their client or otherwise. They assume no responsibility for any statement that may be made in these particulars. These particulars do not form part of any offer or contract and must not be relied upon as statements or representations of fact. 2: Any areas, measurements or distances are approximate. The text, photographs and plans are for guidance only and are not necessarily comprehensive. It should not be assumed that the property has all necessary planning, building regulation or other consents and Savills have not tested any services, equipment or facilities. Purchasers must satisfy themselves by inspection or otherwise. Brochure by fourwalls-group.com

