



Charming, practical living space in a convenient position

Bury Green, Little Hadham, Ware, Hertfordshire, SG11

£1,100,000 Freehold

savills

Charming character in a really convenient position • Set in a mature and beautifully landscaped garden • Lots of outbuildings and a garage • Just minutes by car from Bishop's Stortford • Lovely open plan kitchen / living area

Local Information

Bury Green is an attractive traditional hamlet set amongst rolling countryside and benefitting from an open village green.

The property is approximately 2.9 miles from the market town of Bishop's Stortford which offers multiple shopping and sporting facilities, schooling for all ages with excellent state schooling including Bishop's Stortford High School and the Anglo European College and private schooling at Bishop's Stortford College. Further private schools are available at St Edmunds College, Haileybury and Heath Mount. Bishop's Stortford has a main line railway station with commuter services to London's Liverpool Street. Further vehicular access is readily accessible with the A10 to the west providing access to Hertfordshire and the M25 and London. The M11 motorway on the eastern outskirts of Bishop's Stortford (Junction 8) provides access to Cambridge and the A1 to the north and the M25 and London to the south.

About this property

The oldest part of the property dates from the 16th century and retains a thatched roof. The house is Grade II listed.

A later tiled edition provides the everyday living space and master bedroom suite. Delightfully

mature gardens envelop the house with various sheds and a double garage and driveway providing additional storage. The older part of the property retains exposed beams and brick fireplaces and has been sympathetically maintained by the current owners throughout.

There are 3 reception areas 2 of which are in the original part of the house with exposed timbers and brick fireplaces. The rear wing of the property is more modern with an open plan kitchen/dining and living area which opens onto the gardens to the rear. There are two staircases, one of which gives access to the master bedroom suite and additional bedroom. There are two further bedrooms and two further bathrooms offering versatile accommodation. There is an outside utility room which houses the boiler and provides a useful outdoor kitchen.

Mature gardens surround the house with a variety of specimen trees and shrubs, water features, vegetable patch, greenhouse and additional garden sheds.

Local Authority

East Herts District Council

Energy Performance

EPC Rating = Exempt

Note: Pictures taken in 2015/2016





The Croft, Bury Green, Little Hadham, Ware, Hertfordshire, SG11

Gross Internal Area 2424 sq ft, 225.2 m²

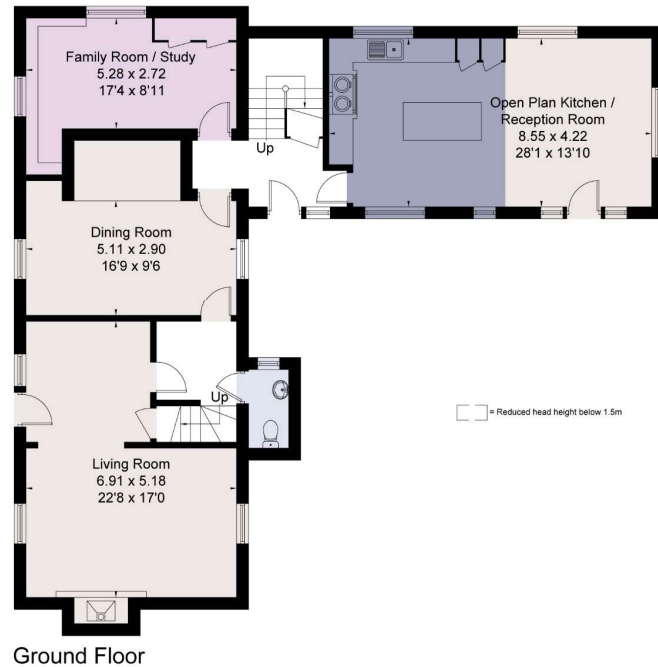


savills

savills.co.uk

Justin Godfrey
Bishops Stortford
+44 (0) 1279 756 800
jgodfrey@savills.com

Approximate Floor Area = 225.1 sq m / 2424 sq ft (Excluding Outbuilding)



Drawn for illustration and identification purposes only by fourwalls-group.com 243504

Important notice Savills, its clients and any joint agents give notice that 1: They are not authorised to make or give any representations or warranties in relation to the property either here or elsewhere, either on their own behalf or on behalf of their client or otherwise. They assume no responsibility for any statement that may be made in these particulars. These particulars do not form part of any offer or contract and must not be relied upon as statements or representations of fact. 2: Any areas, measurements or distances are approximate. The text, photographs and plans are for guidance only and are not necessarily comprehensive. It should not be assumed that the property has all necessary planning, building regulation or other consents and Savills have not tested any services, equipment or facilities. Purchasers must satisfy themselves by inspection or otherwise. 20191014JNGO

