



Delightful cottage in a sought-after village

Acton Turville, South Gloucestershire

Freehold





Living room • dining room • kitchen • snug • four bedrooms • two bathrooms • separate shower • triple carport • walled garden.

Description

Dormer Cottage is an attractive stone-built cottage in a highly sought after location. Formerly two cottages with origins dating to C17th, the house has attractive stone elevations beneath a steep Cotswold stone slate roof.

The accommodation is arranged over three floors and offers just under 2,000 sq ft internally with a large triple carport and stores attached to the side of the house.

There are many original features including fireplaces, exposed beams and wooden latch doors.

The property is entered via a large entrance hall/snug with ashlar stone fireplace and wood burning stove. From here the corridor provides access to the spacious sitting room and dining room, which leads to the kitchen and a door to the walled rear garden.

On the first floor is the principal bedroom with en suite bathroom as well as another bedroom and two further bath/shower rooms.

On the second floor are another two bedrooms, both with built-in cupboards.

Outside

The property is accessed from the road where there is a gravel driveway and parking area, in front of the triple carport and garden stores.

There is gated access leading up a pathway to the front garden when approached from the road. The garden wraps around the property and is predominantly laid to lawn and is arranged in to separate sections by dry stone walls and fencing, creating different zones and areas of interest. The garden is safely enclosed and offers a pleasant degree of privacy with mature planting, climbing roses on the house and pretty flower borders.



Situation

The property is situated within the popular village of Acton Turville, surrounded by glorious countryside and well placed for the villages of Badminton and Burton.

The picturesque village of Acton Turville is sought after because it offers the rare combination of peace and tranquillity together with access to the M4 motorway. The village has a thriving community along with a pub, The Fox and Hounds, and Burton Farm Shop & Kitchen, which is approx. 1.2 miles from the property.

Acton Turville makes an excellent base for commuting into Bath, Bristol, Swindon and Chippenham; Junction 18 of the M4 is approximately 4 miles distant, and there are regular fast trains to London Paddington from Bath Spa (from 75 minutes) and Chippenham (from 59 minutes).

Within the area is a selection of well regarded public and state schools at all levels.

Tenure

Freehold

Services

Mains water, electric and drainage. Oil-fired central heating.

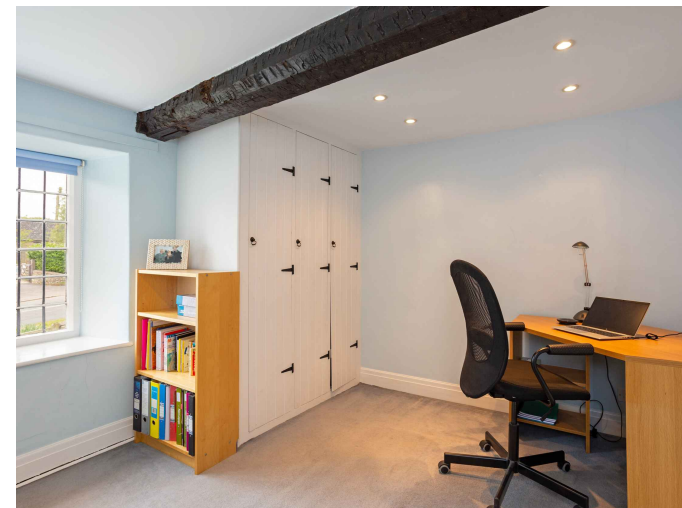
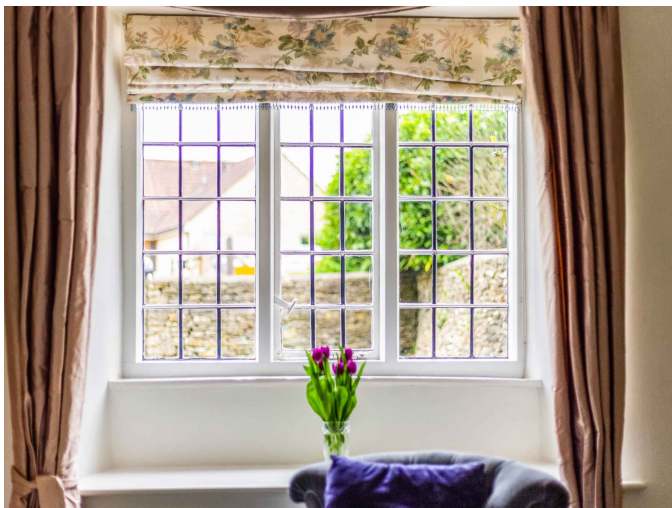
In accordance with Consumer Protection from Unfair Trading Regulations (CPRs) and the Business Protection from Misleading Marketing Regulations (BPRs), please note that the working condition of any of the services or kitchen appliances have not been checked by the agents but at the time of taking particulars we were informed they were all in working order.

Local Authority

South Gloucestershire

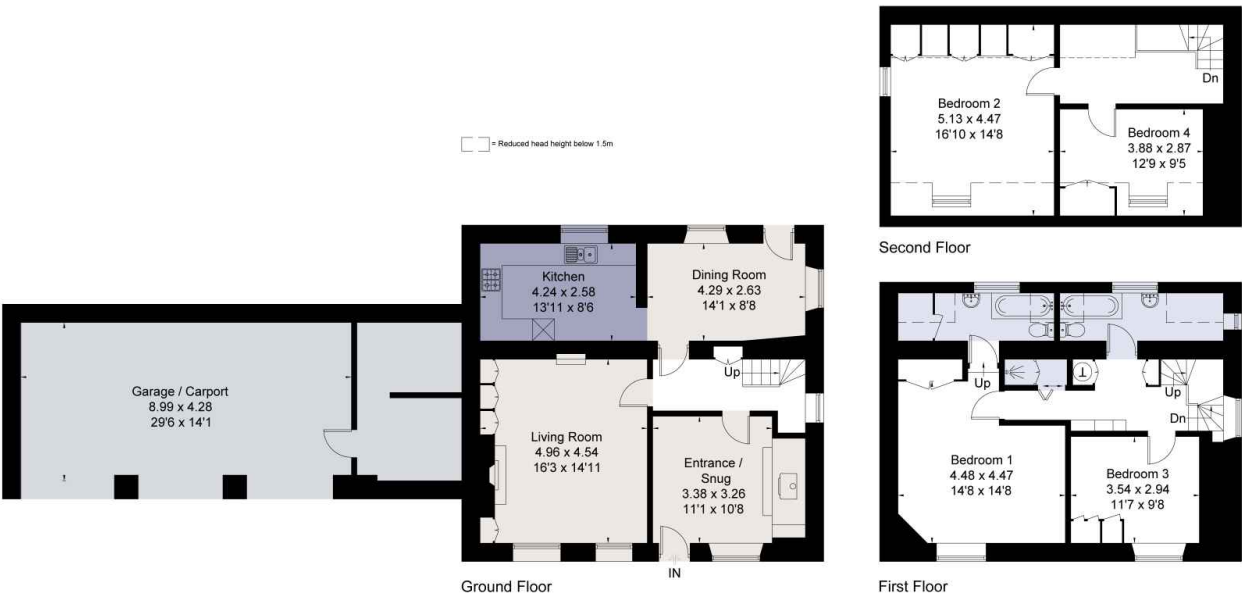
Viewing

Strictly by appointment with Savills.





Approximate Area = 178.3 sq m / 1919 sq ft
Garage / Carport = 51.6 sq m / 555 sq ft
Total = 229.9 sq m / 2474 sq ft
Including Limited Use Area (18 sq m / 194 sq ft)
For identification only. Not to scale.
© Fourwalls



Surveyed and drawn in accordance with the International Property Measurement Standards (IPMS 2: Residential)
fourwalls-group.com 298063

For identification only. Not to scale. © CC20220523

Important notice Savills, its clients and any joint agents give notice that 1: They are not authorised to make or give any representations or warranties in relation to the property either here or elsewhere, either on their own behalf or on behalf of their client or otherwise. They assume no responsibility for any statement that may be made in these particulars. These particulars do not form part of any offer or contract and must not be relied upon as statements or representations of fact. 2: Any areas, measurements or distances are approximate. The text, photographs and plans are for guidance only and are not necessarily comprehensive. It should not be assumed that the property has all necessary planning, building regulation or other consents and Savills have not tested any services, equipment or facilities. Purchasers must satisfy themselves by inspection or otherwise. Prepared in Fprintz by fourwalls-group.com

