



Beautifully presented four bedroom home

Dupre Crescent Wilton Park, Beaconsfield, Buckinghamshire HP9 2RW

Freehold



Entrance porch • sitting/dining room • kitchen • utility room • cloakroom • 4 bedrooms (1 en suite) • family bath/shower room • generous front and rear gardens, garage

Local information

Set in a spectacular and unrivalled environment just off junction 2 of the M40, Wilton Park is set to become a highly desirable new residential destination within Beaconsfield.

Inland Homes vision for Wilton Park is the creation of a well-connected private estate set in a rural landscape, with a welcoming public park at its heart for the benefit of local residents and for those who choose to make their home in this remarkable location.

Wilton Park will have the distinctive air of a traditional 'English country estate' with existing mature trees retained, open grassland and wildflower meadows providing an attractive and tranquil parkland.

For walkers and joggers a network of formal pathways are being created, while cycleways will link Wilton Park with Beaconsfield Old Town for safe and convenient connections.

Sports pitches and children's play areas are also being created, along with a new community hub to provide facilities for local clubs, as well as a new pavilion with café and gallery overlooking an ornamental pond.

This new green habitat will respect the existing natural biodiversity of the park, ensuring that flora and fauna continue to thrive in this new environment.

About this property

A four bedroom family home, beautifully refurbished to a high standard and set on a generous plot with a substantial rear garden situated within Brackenwood, the first phase of the much anticipated Wilton Park Development in Beaconsfield.

The well-proportioned 1660 sq ft link detached property with single garage and parking for a further 2 cars is accessed via the ample front garden and comprises entrance hall with guest cloakroom and doors to cloaks cupboard, open plan kitchen, living, dining area with double sliding doors leading to the garden and utility room.

The kitchen benefits from contemporary handleless white units complimented by white Quartz work surfaces and upstands incorporating 1 and 1/2 bowl stainless steel sink bowl under the window with no drainer, Zanussi double oven and induction four ring hob, integrated dishwasher and fridge freezer. There is a door from the kitchen to the side of the house, offering easy access to both the garage and the driveway. The utility room located off the kitchen has a further sink, space for washing machine and tumble dryer along with a door to the rear garden.





Floating stairs with a glass balustrade lead to the first floor landing, principle bedroom with fitted wardrobes and en suite, shower room, three further bedrooms and the family bathroom.

Outside

To the rear of the property is a large, mainly laid to lawn westerly facing garden with a wide stone terrace. The gardens are defined to the front by Laurel hedges and to the rear by close board fencing providing privacy. To the front is an area of lawn, driveway and single garage.

Services

All main services connected. Please note that none of the services have been tested.

Tenure

Freehold

Local Authority

South Bucks District Council

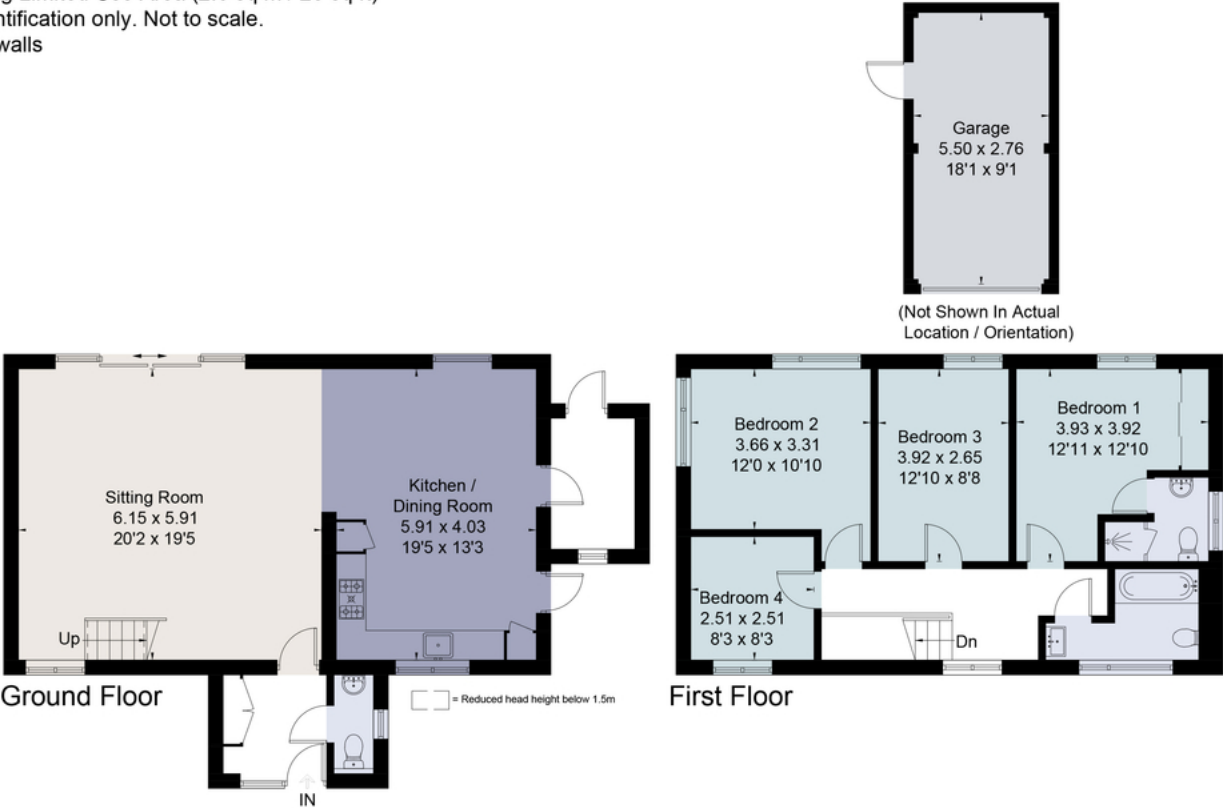
EPC rating = C

Viewing

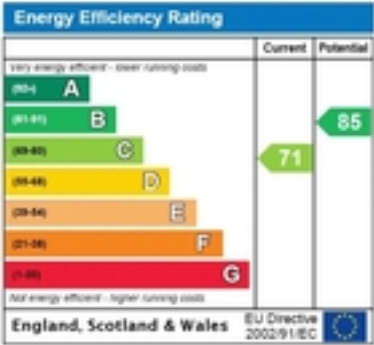
Strictly by appointment with Savills



Approximate Area = 139.0 sq m / 1496 sq ft
Garage = 15.2 sq m / 164 sq ft
Total = 154.2 sq m / 1660 sq ft
Including Limited Use Area (2.6 sq m / 28 sq ft)
For identification only. Not to scale.
© Fourwalls



Surveyed and drawn in accordance with the International Property Measurement Standards (IPMS 2: Residential)
fourwalls-group.com 267601



Important notice: Savills, their clients and any joint agents give notice that 1: They are not authorised to make or give any representations or warranties in relation to the property either here or elsewhere, either on their own behalf or on behalf of their client or otherwise. They assume no responsibility for any statement that may be made in these particulars. These particulars do not form part of any offer or contract and must not be relied upon as statements or representations of fact. 2: Any areas, measurements or distances are approximate. The text, photographs and plans are for guidance only and are not necessarily comprehensive. It should not be assumed that the property has all necessary planning, building regulation or other consents and Savills have not tested any services, equipment or facilities. Purchasers must satisfy themselves by inspection or otherwise. 12022050 Job ID: 148718 User initials: CLS