

FITZROY HOUSE

BATH

Apartment 28, Fitzroy House

Great Pulteney Street, Bath, BA2 4DW

One bedroom apartment
Third Floor
Lift access
Grade I listed property
Prime location
Bulthaup kitchen
Luxury specification



A development by

LONGACRE

Property Development and Investment



Description

Apartment 28, Fitzroy House is an exquisite example of a period Georgian one bedroom apartment located on the 3rd floor of this grade 1 listed property. The apartment is accessed at ground level via a grand reception hall and staircase spiralling up to the upper accommodation levels. Alternatively there is a lift. Upon exiting the lift there is a communal lobby shared with one other residence and a well-proportioned front door leading to the apartment. A spacious entrance hall includes a lovely study area together with excellent built in storage. Off the hall is a double bedroom with built in wardrobes. The south facing open plan kitchen reception is bathed in light with large windows allowing for fabulous uninterrupted views towards Prior Park.

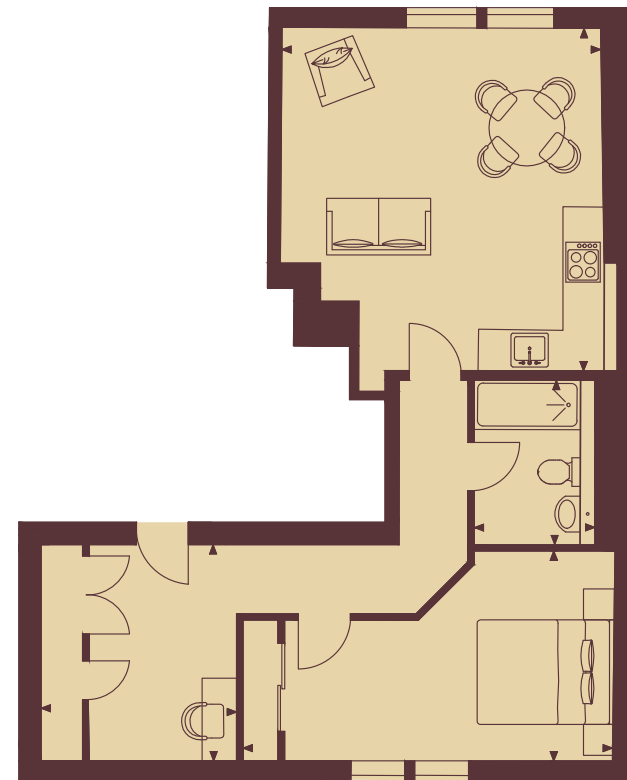
Fitzroy House is a unique collection of one, two and three bedroom luxury apartments located in the very heart of Bath. These lateral residences of distinction are positioned in Baths widest and arguably most grand of addresses - Great Pulteney Street. Fitzroy House spans five Grade 1 listed townhouses and has been developed to offer the very best in modern living combined with the provenance of such a historic building and location. Each apartment has been thoughtfully considered and features highlights such as private terraces or balconies, parking or private entrances whilst all benefit from Bulthaup kitchens, a communal garden and lift access to most apartments.



Location

Bath is renowned for its history, culture and beautiful Georgian architecture, Bath is the only World Heritage City in England. Fitzroy House is perfectly placed for a leisurely level walk across Pulteney Bridge into the centre of Bath, less than 500 metres from the city's amenities including restaurants, theatres and shops, with Waitrose as your corner shop. Savour the beautiful surroundings of Bath, enjoy the Thermae Bath Spa, the theatres, art galleries and museums. Visit the vast variety of shops, watch Premiership Rugby at the Rec. Alternatively get out and about with a walk through Sydney Gardens and along the canal or take a stroll through National Trust fields off Bathwick Hill.

250m Pulteney Bridge • 300m Waitrose • 500m Canal walk
1250m Bath Spa Station • 720m Milsom Street



Savills, their clients and any joint agents give notice that: 1. They are not authorised to make or give any representations or warranties in relation to the property either here or elsewhere, either on their own behalf or on behalf of their client or otherwise. They assume no responsibility for any statement that may be made in these particulars. These particulars do not form part of any offer or contract and must not be relied upon as statements or representations of fact. 2. Any areas, measurements or distances are approximate. The text, images and plans are for guidance only and are not necessarily comprehensive. It should not be assumed that the property has all necessary planning, building regulation or other consents and Savills have not tested any services, equipment or facilities. Purchasers must satisfy themselves by inspection or otherwise.

Winkworth Bath
13 Argyle Street
Great Pulteney Street
Bath BA2 4BQ
01225 829000
bath@winkworth.co.uk
winkworth.co.uk

Winkworth

Savills Bath
Edgar House
17 George Street
Bath BA1 2EN
01225 474 591
ellie.mackenzie@savills.com
savills.co.uk

savills