



## A pretty Grade II listed cottage

78 High Street, Amersham, Buckinghamshire, HP7 ODS

Freehold



Lounge • dining room • kitchen/breakfast room • 2 bedrooms • 2 bath/shower rooms • cottage garden.

### Description

A pretty Grade II listed cottage providing deceptive accommodation and with potential to further improve and reconfigure if required.

The ground floor accommodation comprises a lovely formal lounge with feature fireplace leading to separate cosy dining room. To the rear of the house is a split level kitchen/breakfast room leading out the rear garden. Upstairs, the principle bedroom has a super walk in wardrobe and open plan bathroom, with the remaining bedroom served by an additional shower room.

The property has a private South facing cottage garden which is an ideal outside entertaining space.

### Situation

The property is towards the Western end the historic High Street, with its period buildings, boutique shops, coaching inns and restaurants. Amersham on the Hill, about 1.5 miles away offers further shopping facilities as well as the Metropolitan/Chiltern Line station to Baker Street/ Marylebone respectively.

### Tenure

Freehold

### Viewing

Strictly by appointment with Savills.







**78 High Street, Amersham, Buckinghamshire, HP7 ODS**

**Approximate Area** 96.3 sq m / 1036 sq ft

**Including Limited Use Area** (1.0 sq m / 11 sq ft)

**Contact**

Savills Amersham

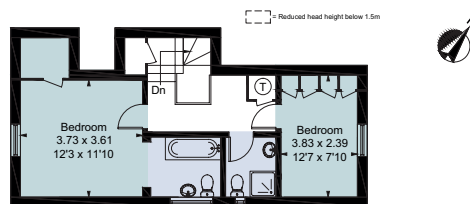
**01494 725636**

amersham@savills.com

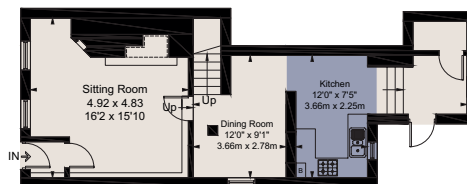


savills

savills.co.uk



First Floor



Ground Floor

For identification only. Not to scale. © 210720ML

**Important notice** Savills, its clients and any joint agents give notice that 1: They are not authorised to make or give any representations or warranties in relation to the property either here or elsewhere, either on their own behalf or on behalf of their client or otherwise. They assume no responsibility for any statement that may be made in these particulars. These particulars do not form part of any offer or contract and must not be relied upon as statements or representations of fact. 2: Any areas, measurements or distances are approximate. The text, photographs and plans are for guidance only and are not necessarily comprehensive. It should not be assumed that the property has all necessary planning, building regulation or other consents and Savills have not tested any services, equipment or facilities. Purchasers must satisfy themselves by inspection or otherwise. Brochure by fourwalls-group.com

