



Spacious detached house with lovely gardens

Beechlands, Penfold Lane, Holmer Green, Buckinghamshire, HP15 6XW

Freehold



Hall • cloakroom • lounge • dining room • family room
• kitchen/breakfast room • utility room • 5 bedrooms
• 3 bath/shower rooms inc. 2 en suite • double garage
• gardens • EPC rating = D

Description

Beechlands is a modern detached property with an attractive brick and flint front elevation which offers a spacious and well planned layout. There are three reception rooms, including a large lounge with a brick fireplace and double doors connecting with the dining room which links to the kitchen. The family sized kitchen/breakfast room has an extensive range of fitted units with Corian worktops and ample space for informal family dining.

Upstairs there a total of five generous bedrooms and three well appointed bath/shower rooms with two providing en suite facilities to the main and guest bedrooms.

The house is set well back with a gravel driveway leading to the double width garage with twin doors and a connecting door into the house. The rear garden is well established being mainly laid to lawn with flower/shrub beds.

Situation

Located on the edge of Holmer Green which offers local shopping facilities and amenities with Penfold Lane leading through beautiful Chiltern countryside into Little Missenden.

The nearby A404 links Amersham (Metropolitan/Chiltern Line), to Wycombe both about five miles away with the property within secondary catchment of a number of Bucks Grammar Schools, www.buckscc.gov.uk

Tenure

Freehold

Energy Performance

A copy of the full Energy Performance Certificate is available upon request.

Viewing

Strictly by appointment with Savills.





Beechlands, Penfold Lane, Holmer Green, Buckinghamshire, HP15 6XW

Approximate Area 209.2 sq m / 2252 sq ft (Excluding Void)

Garage 36.4 sq m / 392 sq ft

Total 245.6 sq m / 2644 sq ft

Including Limited Use Area (1.7 sq m / 18 sq ft)

Contact

Savills Amersham

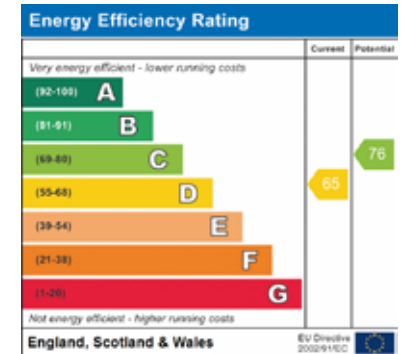
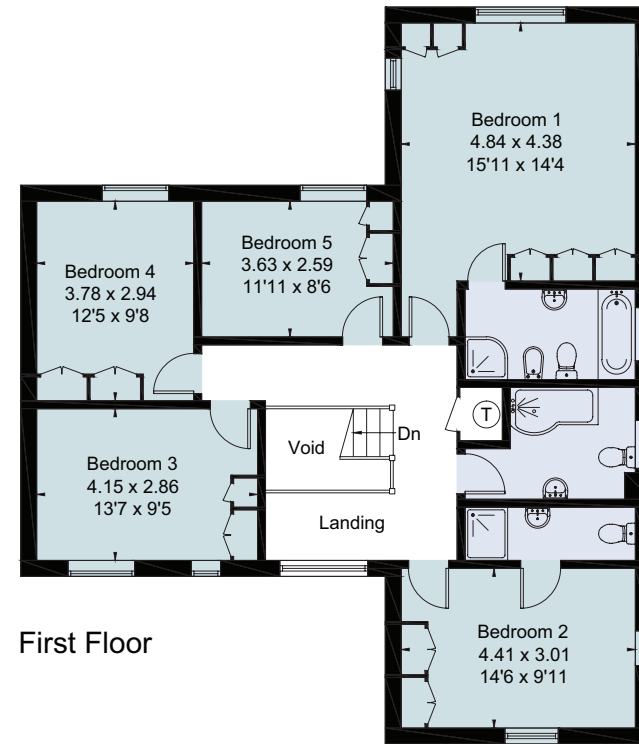
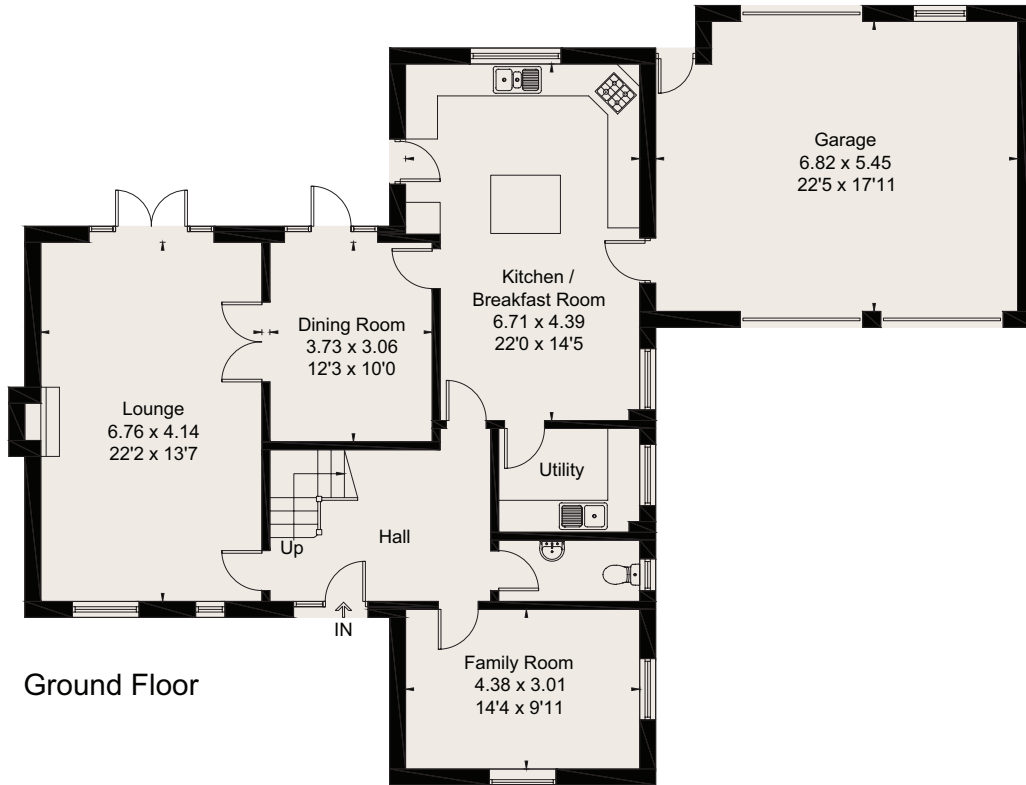
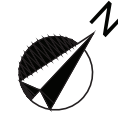
01494 725636

amersham@savills.com



savills

savills.co.uk



For identification only. Not to scale. © 201127NP

Important notice Savills, its clients and any joint agents give notice that 1: They are not authorised to make or give any representations or warranties in relation to the property either here or elsewhere, either on their own behalf or on behalf of their client or otherwise. They assume no responsibility for any statement that may be made in these particulars. These particulars do not form part of any offer or contract and must not be relied upon as statements or representations of fact. 2: Any areas, measurements or distances are approximate. The text, photographs and plans are for guidance only and are not necessarily comprehensive. It should not be assumed that the property has all necessary planning, building regulation or other consents and Savills have not tested any services, equipment or facilities. Purchasers must satisfy themselves by inspection or otherwise. Brochure by fourwalls-group.com

