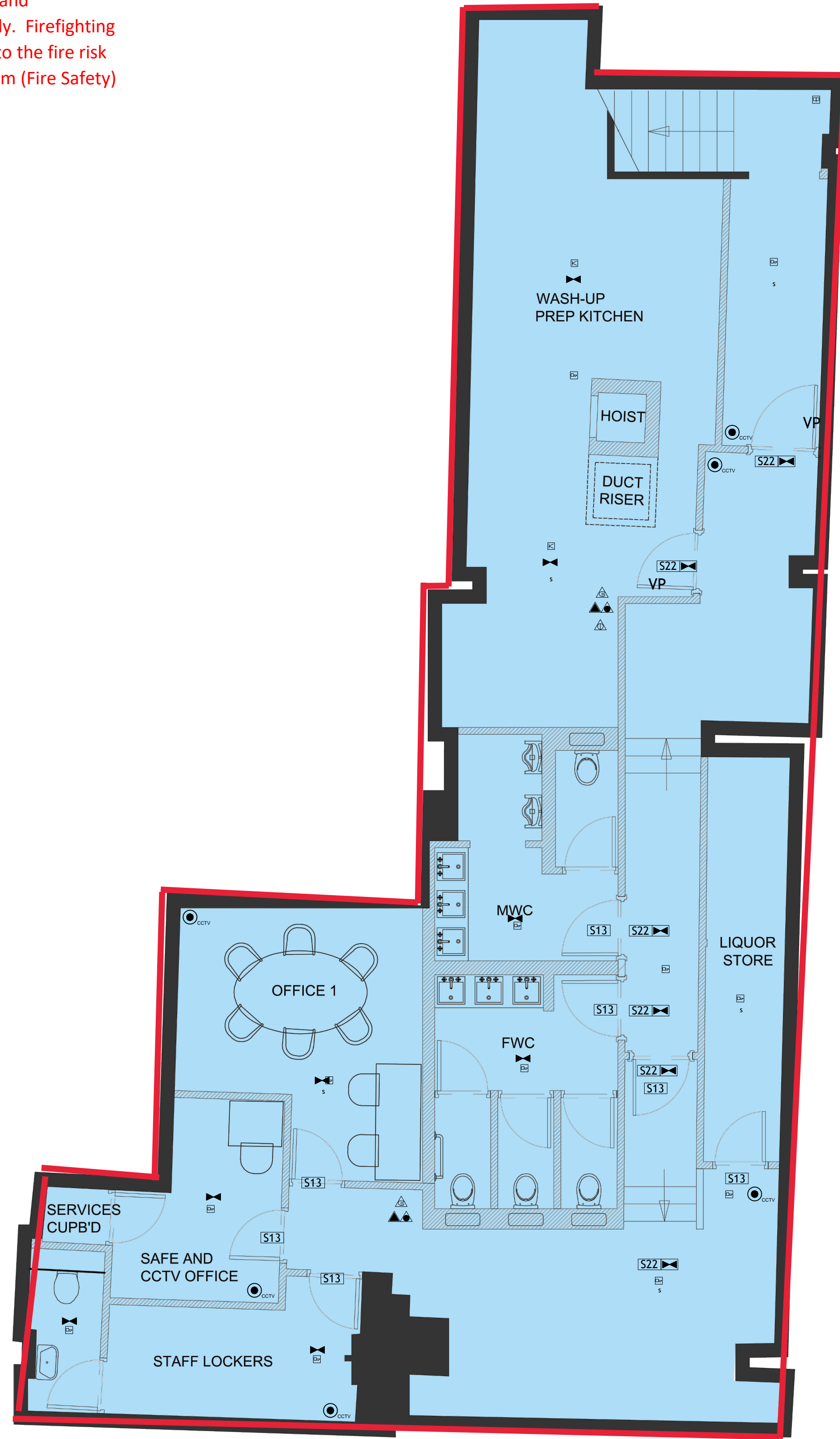
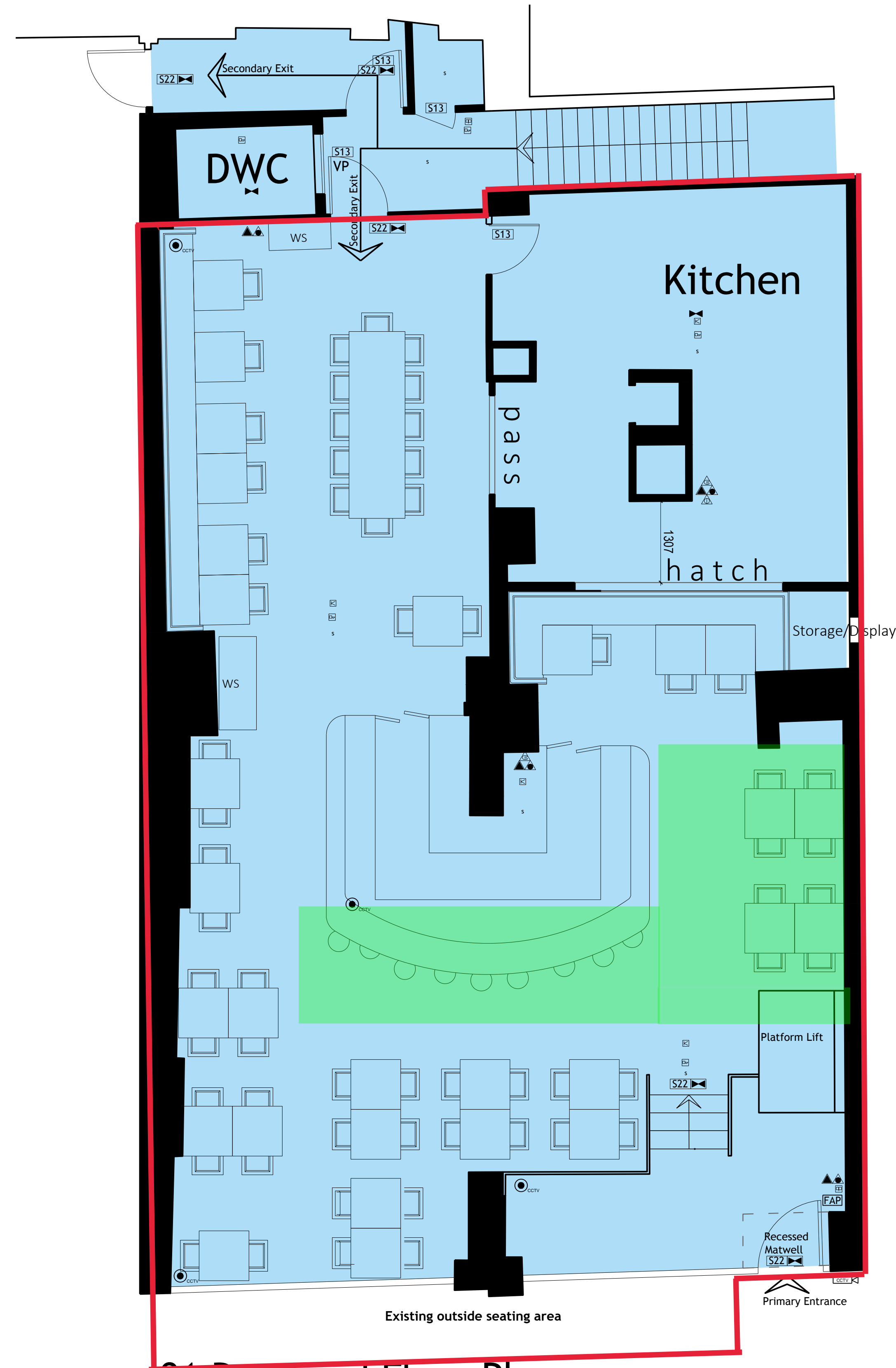


IMPORTANT:- Licensable activities can take place anywhere within the red line. The position of loose furniture and equipment is shown for diagrammatic purposes only. Firefighting equipment is indicated but may be moved subject to the fire risk assessment carried out under the Regulatory Reform (Fire Safety) Order 2005 or by agreement with the fire officer.



01 Proposed Basement Plan



01 Proposed Floor Plan

- KEY**
- Unit Demise
 - ▲ CO2 FIRE EXTINGUISHER
 - ▲ FOM FIRE EXTINGUISHER
 - ▲ FIRE BLANKET
 - ▲ HOI FIRE EXTINGUISHER
 - AREA COVERED BY HEAT DETECTOR
 - AREA COVERED BY SMOKE DETECTOR
 - FIRE DOOR KEEP SHUT SIGN
 - DIRECTIONAL ESCAPE SIGN
 - AS ABOVE (DOUBLE SIDED)
 - DIRECTIONAL ESCAPE ILLUMINATED ESCAPE LIGHTING
 - AREA COVERED WITH ILLUMINATED ESCAPE LIGHTING
 - CONTROL PANEL SOUNDER
 - CALL POINT
 - DR DOOR RELEASE
 - SCA SELF CLOSING DOOR WITH AUTOMATIC RELEASE
 - Fire Alarm Panel
 - External CCTV
 - Internal CCTV
- Notes**
- Electrical installation to conform to BS7671 and sign to conform to BS4945-1.
Fire Alarm system to conform to BS5839-1 & 7.
Location and type of fire extinguishers to be advised by FIB Inspecting Officer, details to be added.
All W.C. and toilets to be provided with external fans and exhaust to S/W.
The location and type of proposed fire safety and any other safety equipment is indicative only. Final details to be advised by FIB Inspecting Officer and details to be added later.
Location and type of loose furniture is diagrammatic only.
GA has been altered in accordance with Safety Approved Inspectors.
Ceiling heights to be reduced approximately 200mm due to installation of new acoustic treatment.

This drawing, design & all information contained herein remains the sole copyright of Karvass Projects Ltd; reproduction in any form is strictly forbidden unless permission is obtained in writing.
© copyright

rev	date	note	init

- NOTES:**
- Do not scale from this drawing, all dimensions must be checked on site. The contractor must verify all site dimensions, drawings and report any discrepancies with the designer before proceeding with any work, details & specifications. Any discrepancies must be reported to Karvass Projects Ltd prior to any commencement of work.
 - All specified items are to be installed in accordance with the manufacturers recommendations & instructions.
 - All finishes are to conform to required current building regulations.
 - All variations of construction details than that of the designer to be approved before commencement of any works.
 - Contractor to provide a working environment which conforms to current health and safety and local authority regulations.
 - All finishes to be carried out to a high standard.
 - It is the main contractors responsibility to ensure all CDM codes of practice are enforced.
 - This drawing is to be read in conjunction with any relevant specialist consultants drawings i.e. m&e, structural engineer, kitchen equipment, lighting etc.
 - All works subject to Pre-am. Scope of Works and

project Rupert Street	stage SKETCH	
client RLM		
dwg title Licensing Plan		
date 20.10.18	scale 1:50	dwg by hd
		Unit N001B Via Studios 1-45 Durham Street London SE11 5JH t: 020 3176 2737 w: www.karvass.co.uk e: enquiries@karvass.co.uk
dwg no. RLM-SK-06	revision.	size. A1