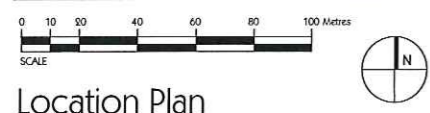
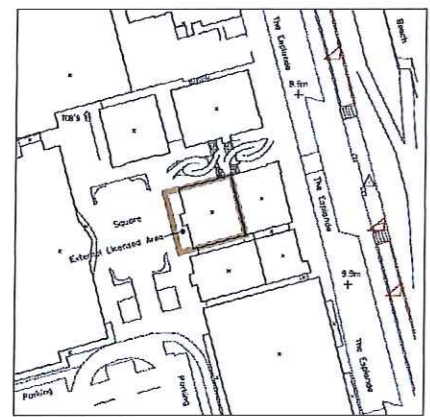


content	as incl	JR.516	F	LIC 01
sdj	date	scale	job no.	stage
Mar 16	24/04/16			
drawing no.	enquiries@johnsonrobson.co.uk			

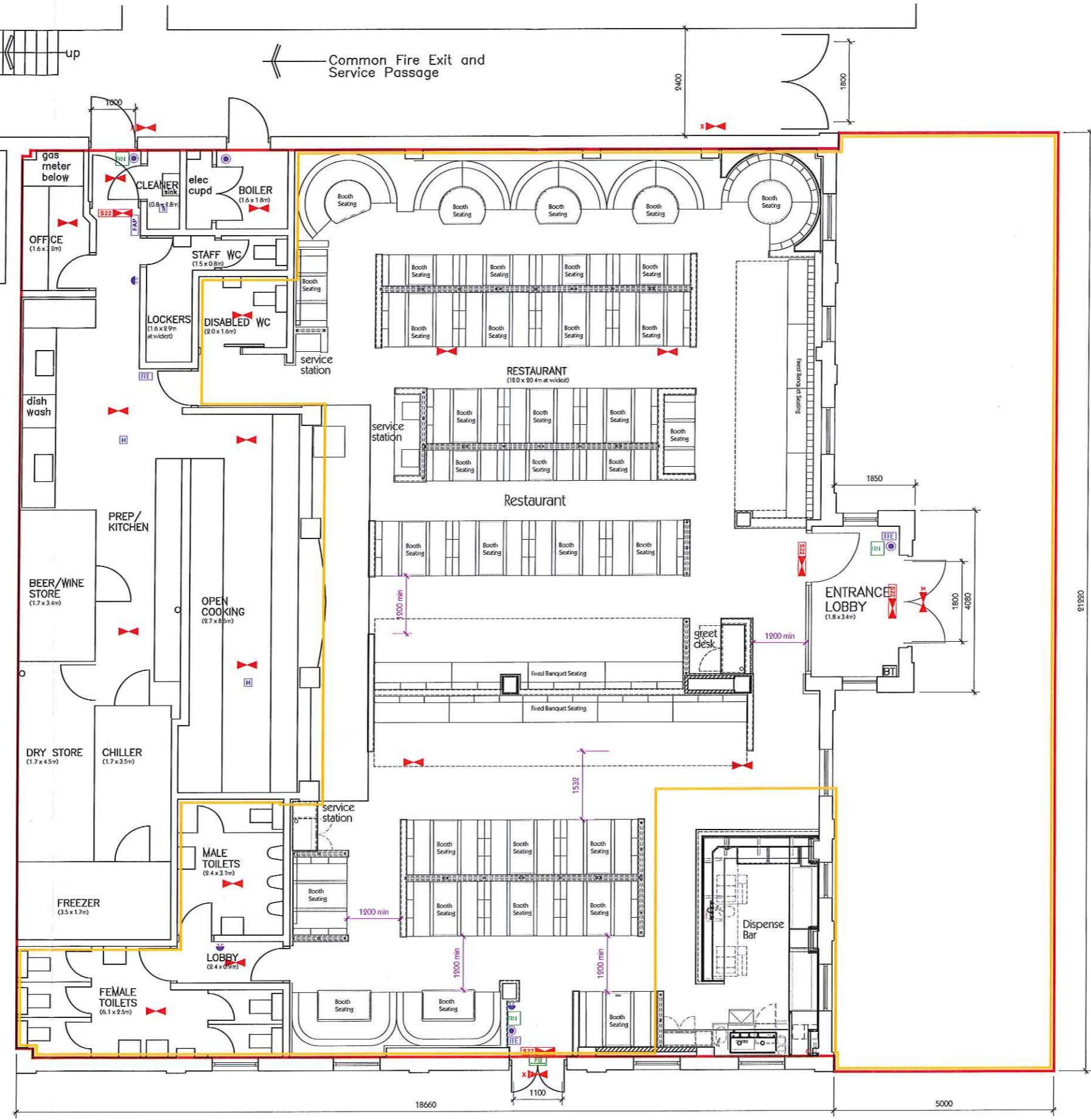
unit 6 pool bank business park high street tarvin chester ch3 8jh
t 01829 749010

date: 24/04/16
revision: 0 first issue



Location Plan
scale 1/1250 @ A1, 1/2500 @ A3

DATE: 1 JULY 2016
PREMISES: FRANKIE & BENNY'S, UNIT 5, QUEENS
LINKS LEISURE PARK, ABERDEEN
TYPE: PREMISES LICENCE



Floor Plan as Proposed
scale 1/50 @ A1, 1/100 @ A3



KEY TO FIRE SAFETY REQUIREMENTS

EMERGENCY LIGHTING SYSTEM (Existing Installation)

- 3 hr maintained exit legend
- 3 hr maintained exit light or legend
- 3 hr maintained light
- 3 hr maintained external light
- 3 hr non-maintained flood light
- New fittings indicated in blue

FIRE ALARM SYSTEM (Existing Installation)

- Fire Alarm Panel
- Magnetic Door Hold
- Manual Call Point
- Heat Detector
- Smoke Detector
- Indicator for Void detector
- Indicates Void Detector
- Sounder
- Sounder Beacon
- Voice Alarm Speaker
- New fittings indicated in blue

FIRE FIGHTING EQUIPMENT
Portable fire appliances to be sited and installed in accordance with BS 5306-8 : 2000 by specialist supplier.
FIRE FIGHTING EQUIPMENT TO COMPLY WITH BS EN3 : 1996, BS 5306 - 3 : 2000 and BS 5306-8 : 2000

Preferred Equipment Locations

FIRE SAFETY SIGNAGE IN ACCORDANCE WITH B.S.5499 pt 1 : 2002

- FIRE DOOR KEEP SHUT NOTICE, Ref B.3.3 FITTED TO BOTH SIDES OF FIRE DOOR
- FIRE DOOR KEEP LOCKED NOTICE, Ref B.3.4
- AUTOMATIC FIRE DOOR KEEP CLEAR
- FIRE ESCAPE KEEP CLEAR SIGN, Ref B.3.10
- FIRE ROUTINE NOTICE
- NON-ILLUMINATED FIRE EXIT SIGN
- PUSH BAR DEVICE OR SIMILAR EMERGENCY OPENING DEVICE WITH NOTICE PUSH BAR TO OPEN, Ref B.4.4
- WHEELCHAIR REFUGE POINT SIGN

UPHOLSTERY
ALL UPHOLSTERY TO SATISFY CIGARETTE AND MATCH IGNITABILITY TEST AND IGNITION SOURCE TESTS AS SPECIFIED IN BS 5852 : 1990 (1998)

KEY

- Extent of Demise
- Extent of the premises to which children and young persons have access