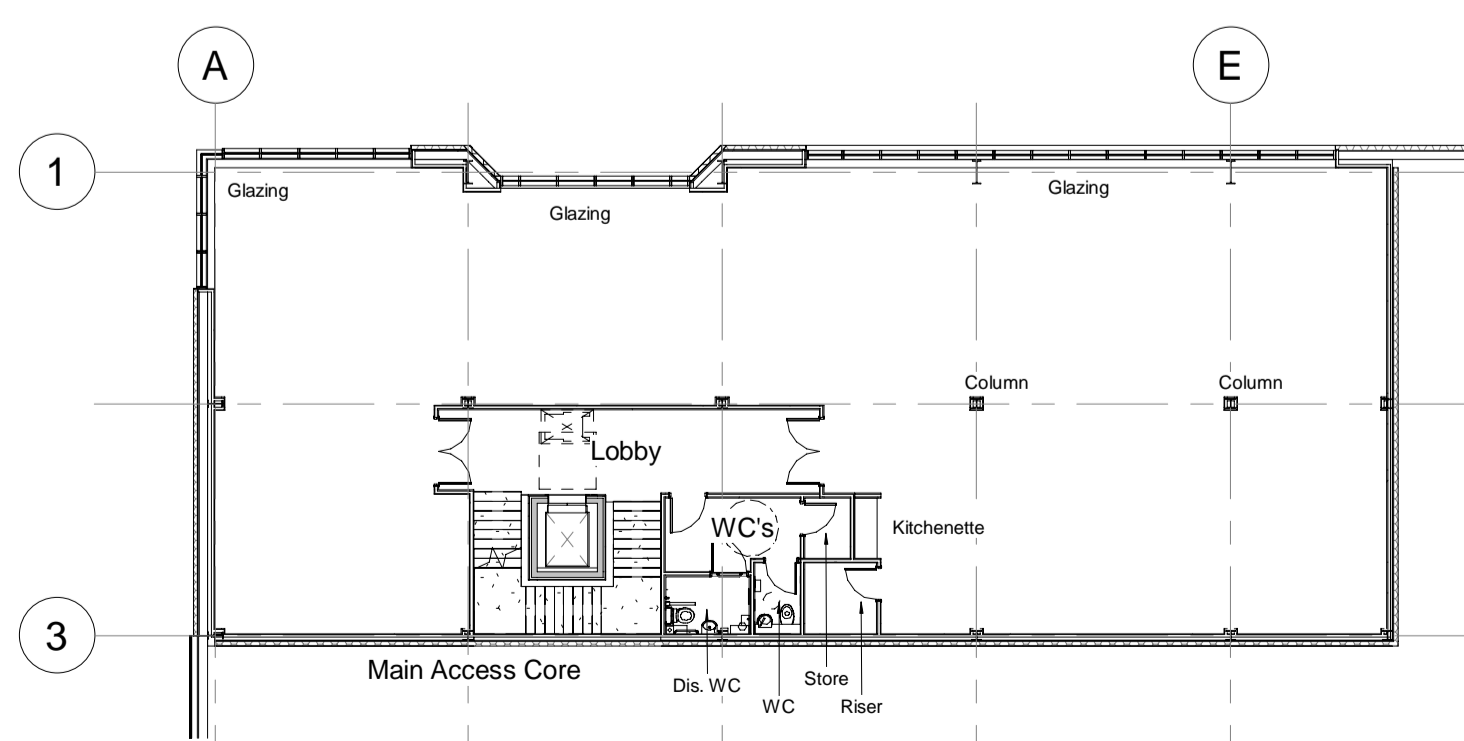


PROPOSED UNIT 3
 84,000 sqft 7,804 sqm
 Total Gross Internal Area

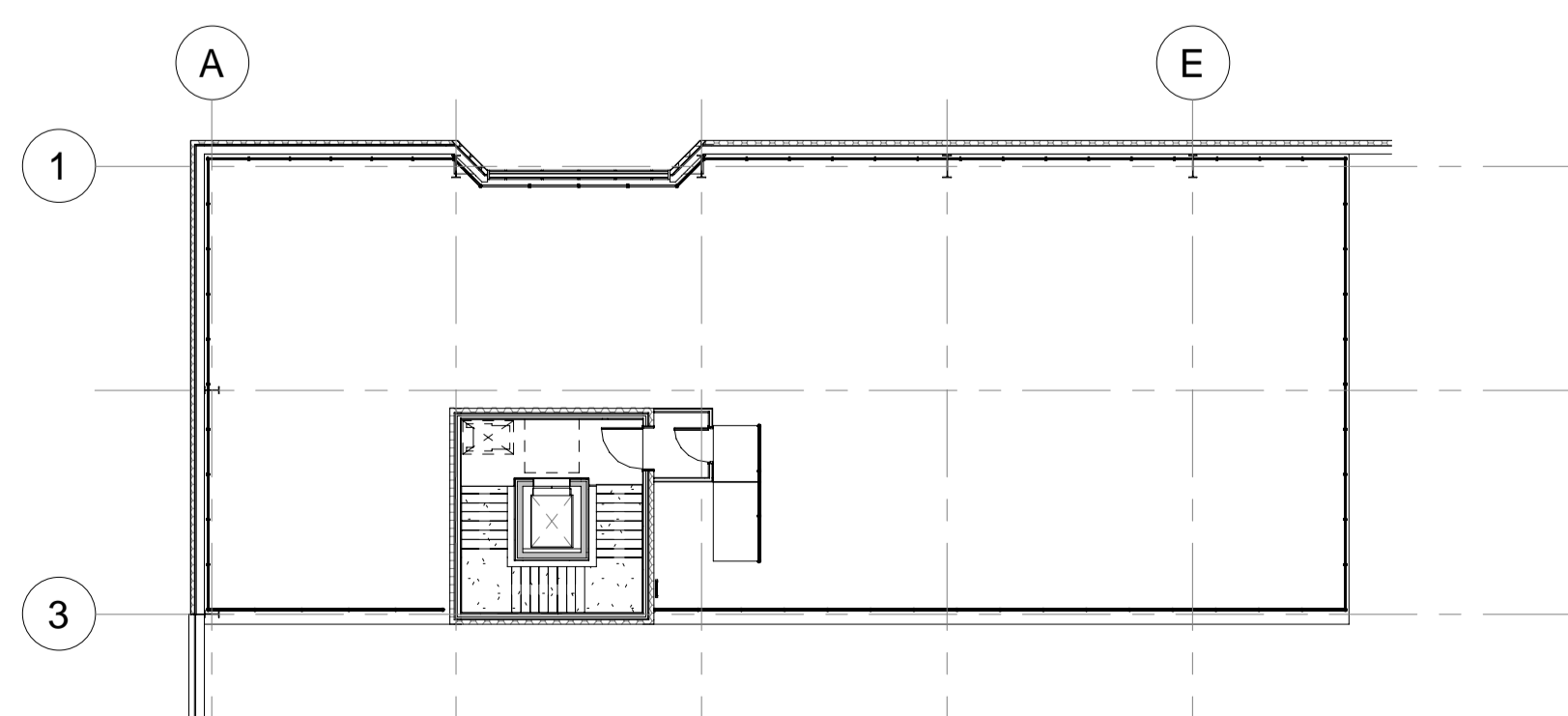
Footprint	80,000 sqft	7,432 sqm
First Floor offices	4,000 sqft	371.6 sqm

12.5m clear to underside of Haunch
 Finish floor level - 52.60 AOD (+/-200mm)
 All areas are measured as gross internal

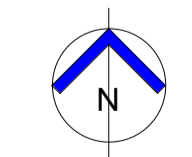
Proposed Ground Floor
 1 : 200



Proposed First Floor Offices
 1 : 200



Proposed Plant Deck
 1 : 200



Project Title	Proposed Industrial Development		Drawing Title	Unit 3 GA Plans	
Client	Wyngrave Limited		Job-Dwg No.	17475 - (P)131	
Status	PLANNING		Rev	C	
Scale	As indicated	Drawing Size	A1		
Drawn By	NBB	Checked By	JMR	Date	04.22
Rev	Date	Description	Rev By	Chk'd By	
C	19.01.24	FFL revised	RH	JR	
B	09.01.24	North point added	RH	JR	
A	20.10.23	Generally updated	RH	JR	

Wakefield, WF1 3QA
 t. 01524 291600

Carvers Warehouse, 77 Dale Street,
 Manchester, M1 2HG
 t. 0161 2388555

The Old Rectory, 79 High Street,
 Newport Pagnell, MK16 8AB
 t. 01508 211577

101 London Road,
 Reading, RG1 5BY
 t. 0118 9507700

10 Giles Court, 98 Christophers Place,
 London, W1U 1JJ
 t. 0207 4091215

THE HARRIS PARTNERSHIP
 A R C H I T E C T S
 www.harrispartnership.com

This drawing is copyright and may not be reproduced in whole or part without written authority. Do not scale off this drawing.