

Proposed Section AA  
1:50

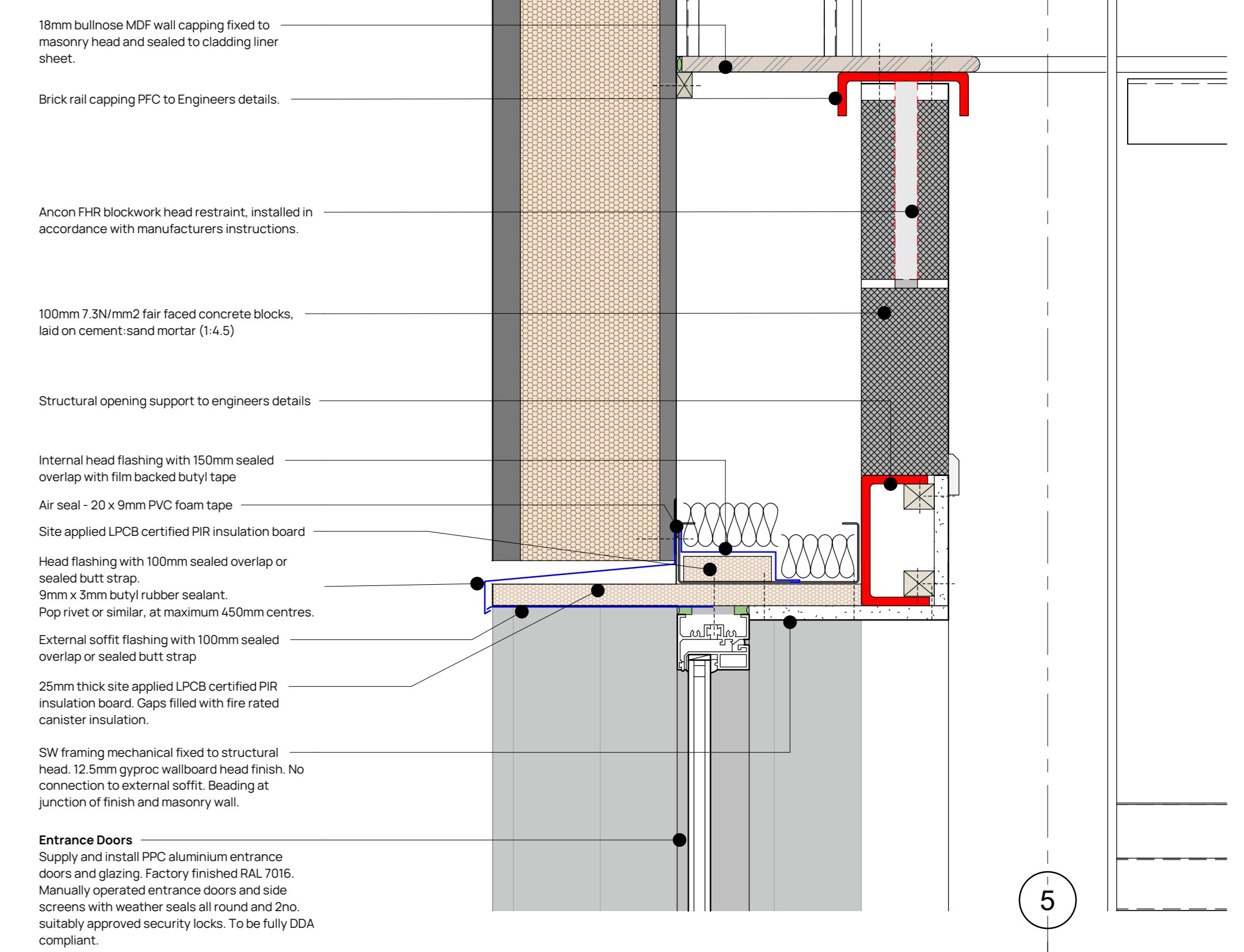
**FIRE FAN**  
Roof to be fire protected 1500mm either side of compartment wall to achieve a minimum 1 hour compartment.

**Rooflights**  
Trapezoidal rooflights by specialist cladding contractor to equate to 10% of OA of warehouse space. Rooflight size/design by Contractor.  
Include bright white inner enamel trims to the perimeter of each roof light.  
Roof lights to achieve a minimum fire performance classification of D-s3,d2.  
All rooflights to comply with class B of the ACH(M)001:2000 report on test for Fragility of Roofing Assemblies.

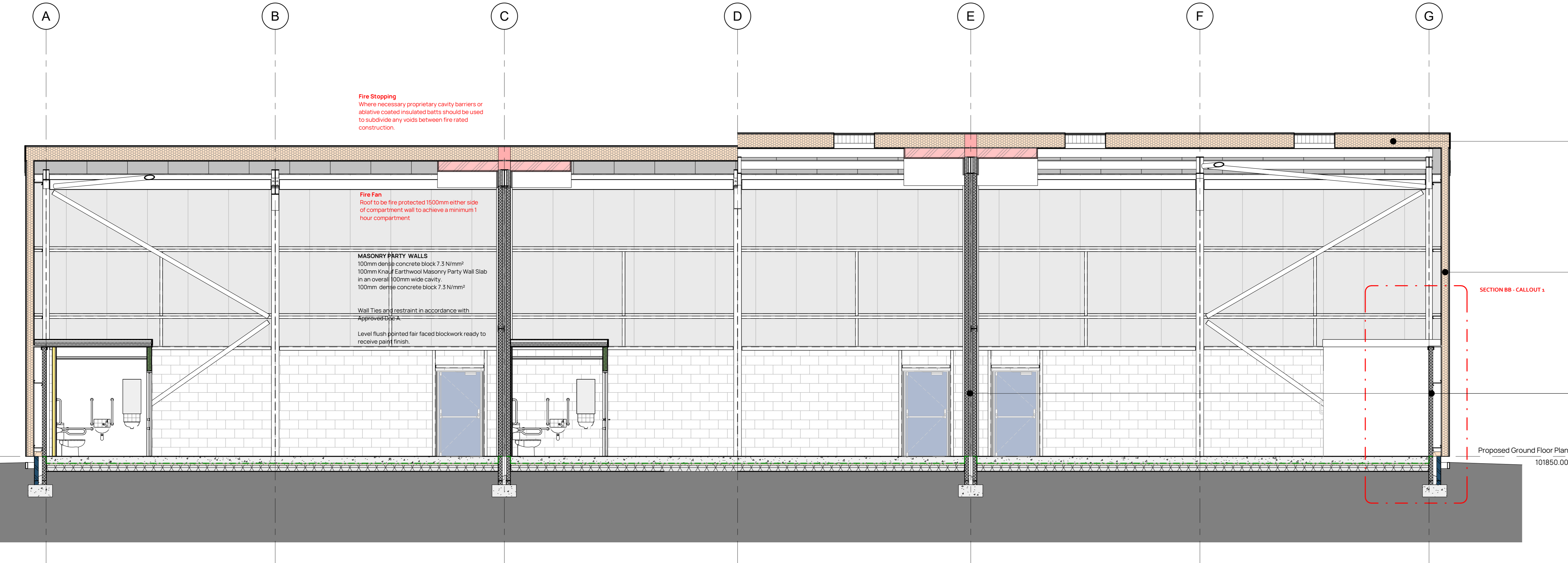
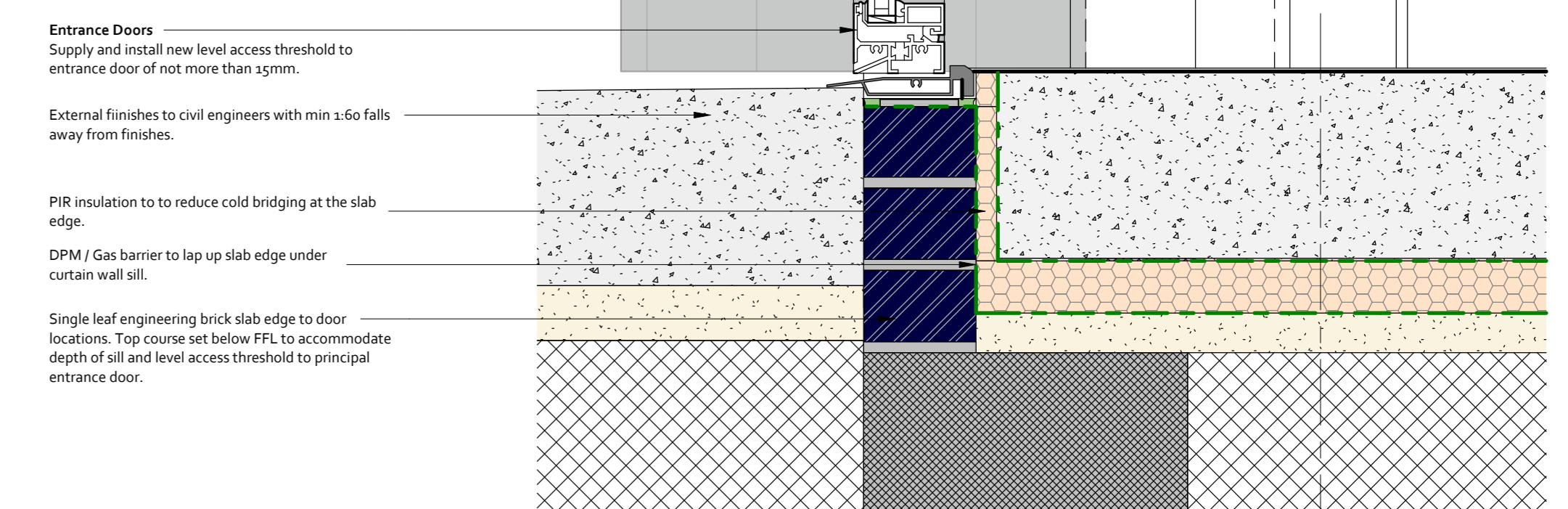
**FIRE STOPPING**  
Proprietary cavity barriers or abative coated insulator batts should be used to subdivide any voids between fire rated construction / compartment walls.

**Roller Shutters**  
Electrically operated roller shutters. In accordance with manufacturer's specification.  
Colour: RAL 7016.  
Shutter to be automated and incorporate key operation & dead man switch opening/closing with manual chain override (in case of power failure) to be operated from rope toggle at low level.  
The door shall be fitted to an opening with a minimum size of 4.0m wide x 4.0m high and shall be equipped with rubber weather strip fitted to base of door and weather seal fitted to head. No vision panels shall be incorporated into the door. The door should also incorporate a suitable locking arrangement accessible internally only.

**External Door - Callout 1 (Head)**  
1:5



**External Door - Callout 2 (Sill)**  
1:5



Proposed Section BB  
1:50

**Fire Stopping**  
Where necessary proprietary cavity barriers or abative coated insulator batts should be used to subdivide any voids between fire rated construction.

**Fire Fan**  
Roof to be fire protected 1500mm either side of compartment wall to achieve a minimum 1 hour compartment.

**MASONRY PARTY WALLS**  
100mm dense concrete block 7.3 N/m<sup>2</sup>  
100mm total Fairwood Masonry Party Wall Slab in an overall 100mm wide cavity.  
100mm dense concrete block 7.3 N/m<sup>2</sup>  
Wall Ties and restraint in accordance with Approved DCPA.  
Level flush pointed fair faced blockwork ready to receive paint finish.

**Roof Cladding**  
Non combustible cladding by specialist cladding contractor.  
Pleatcoated profiled steel roof thruvulved built-up cladding system by specialist cladding contractor.  
Supply and install 320mm Rockwool Cladding Roll insulation or similar approved to Built-up system roof cavity.  
Include for all necessary flashings and trims as required to complete the installation in accordance with manufacturers instructions.  
Colour: RAL 7016.

**Wall Cladding**  
Non combustible cladding by specialist cladding contractor.  
Pleatcoated profiled steel wall thruvulved built-up cladding system by specialist cladding contractor.  
Supply and install 160mm Rockwool Cladding Roll insulation or similar approved to Built-up system cavity.  
Include for all necessary flashings and trims as required to complete the installation in accordance with manufacturers instructions.  
Colour: Dual RAL 7016 / 7035.

**Intumescent Coatings**  
All structural steelwork supporting party wall and relevant boundaries to receive intumescent coating to achieve 60mins fire protection. Installed in accordance with manufacturers instructions. Offsite applied thin film intumescent coating in accordance with ASPTCO-16.  
Where steel frame and foundations are designed to the requirements of SCI Publication 313 - Single Storey Steel Framed Buildings in Fire Boundary Conditions. The fire resistance to the rafters can be omitted.

1:50  
0mm 100mm 150mm 200mm 250mm

1:5  
0mm 100mm 150mm 200mm 250mm

Revision	Date	Drawn	Description
11	30/03/23	JW	Initial Issue
12	30/03/23	JW	Construction

**Client & Project**  
Station View Ltd  
3rd, Trade Units  
Address  
**Heritage Park**  
Station Way  
Bishop Auckland  
DL14 9TT  
Drawing Title  
**Proposed Sections**

Station / Stage	Scale @ A0	Drawn	Checked
SO	As indicated	JW	

Drawing Number	Revision
S3954-BDN-XX-XX-DR-A-0009	C1