



WORKWELL

COPTHALL BRIDGE

STATION BRIDGE HARROGATE HG1 1SP

WORKWELLOFFICES.com

WE CREATE WORK ENVIRONMENTS, NOT OFFICES

38,000 SQ FT GRADE A WORKSPACE IN THE
CENTRE OF HARROGATE

DESIGNED TO FOSTER A HIGH-PERFORMANCE
ENVIRONMENT

ACTIVITY-BASED WORKING WITH PRIVATE
OFFICES, COWORKING AND SPACE ON-DEMAND



ARTIST'S IMPRESSION OF THE NEWLY DEVELOPED BUILDING.



WORKSPACES THAT INSPIRE SUCCESS

At WorkWell we believe that businesses who invest in their staff by creating the right work environment are more likely to thrive. A workspace that supports focus, collaboration, and socialisation is essential for unlocking a team's potential. Unlike traditional offices, WorkWell provides purpose-driven environments tailored to activity-based working.

With quality at the heart of what we do, WorkWell empowers teams to choose how they work, boosting productivity and performance. Our all-inclusive, research-backed solutions ensure that teams work in spaces they love, aligned with your business goals.



PRIVATE OFFICES & SUITES

Dedicated space for companies wanting a private space to support their team.

HQs

Space designed to support the central operations of your business, with everything you need to establish a strong, professional base.

Regional Hubs

Ideal for businesses looking to establish a strong local presence and support their team with a convenient, professional workspace separate from their headquarters.

Project Offices

Dedicated room for teams to collaborate in a fully-equipped space over a fixed period, ideal for focused work on specific projects.



SPACE ON-DEMAND

Access space that complements your existing working environment.

Meeting Rooms

A focused setting for both internal and external meetings, thoughtfully designed to make attendees feel comfortable in a professional atmosphere.

Boardrooms

A premium space for high-level meetings, designed to make guests feel welcome while reflecting your brand and delivering a professional impression.

Team Rooms

Dedicated workspace for short-term projects, ideal for bringing teams together in a focused, collaborative environment.

Event Spaces

A versatile and professional space for hosting corporate gatherings, tailored to create memorable experiences that align with your brand's image. Exclusive for members and affiliates.



FLEXIBLE SPACES

Ideal for supporting individuals or small teams in an office space when they need it.

Coworking Memberships

Our coworking spaces provide a balanced environment with collaborative areas for networking and focused zones for independent work, offering flexibility and productivity for every professional.

Virtual Offices

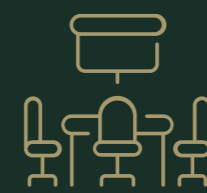
Give your business a premium address with professional mail handling, offering the benefits of a physical office.

Call Handling

Managed incoming calls and message service enabling your business to maintain a professional image.

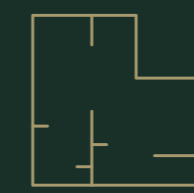
SPACE DESIGNED FOR SUCCESS

As a WorkWell member, you'll enjoy exclusive access to a variety of workspace environments, thoughtfully designed to support the way you and your team prefer to work.



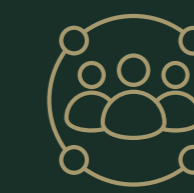
SPACE WITH PURPOSE

Tailored for optimal performance in combination with your specific needs, you can choose from a range of thoughtfully designed, bespoke workspaces to enhance your workday.



DESIGN & LAYOUT

Our environment is designed to be people-first, incorporating features that promote a stress-free, healthier, and happier atmosphere, fostering a more productive workday in an inspiring workspace.



SERVICE & COMMUNITY

Providing a premium and personalised service, our team is dedicated to making you feel comfortable and welcome. Our warm, friendly atmosphere also encourages socialising and networking.



TECHNOLOGY & INFRASTRUCTURE

Our robust infrastructure is fast, reliable, and consistently upgraded. By handling the technical details, we enable you to focus on delivering your best work effortlessly and efficiently.



TURNKEY WITH SUPPORT

We aim to make your move seamless, taking the stress out of the equation. From day one, you'll be fully operational with a setup customised to you and your team, all handled and managed by us.



FLEXIBLE & PERSONAL

Offering a range of spaces in an agile environment, allows you to easily scale your room size up or down within a flexible agreement tailored to your needs.



WHERE DESIGN MEETS PURPOSE

At WorkWell, we believe that providing a range of environments benefit your working day. That's why we've designed spaces with purpose that cater to the diverse roles and needs of your team.

From quiet pods for focused work to vibrant breakout areas that spark creativity, every corner is crafted to benefit you. Our bespoke office designs offer your business the environment that supports your business goals, ensuring that your staff can achieve their best work, every day.



A SPACE DESIGNED FOR YOUR GROWTH

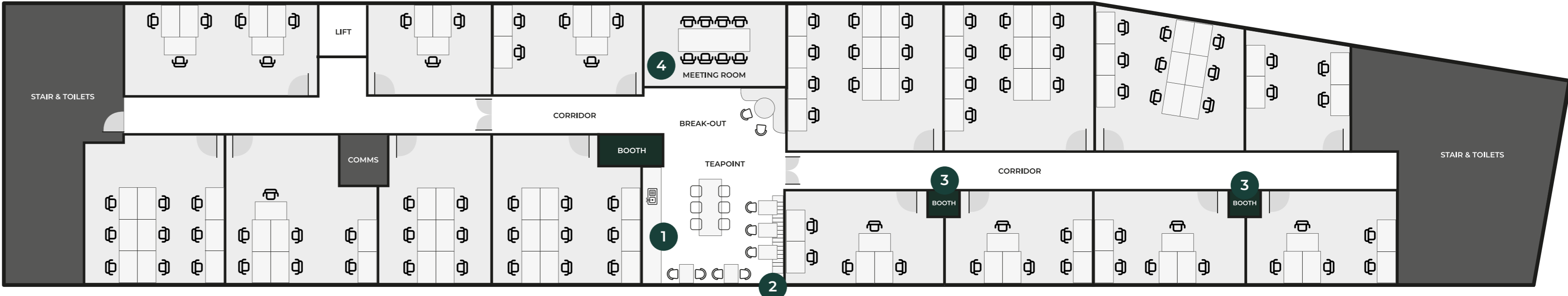
At Copthall Bridge, every detail is meticulously planned to provide the ideal environment for your business. Our building ensures that your new workspace is ready when you need it, while our flexible floorplans allow you to customise your office to perfectly suit your team's needs. Whether you're looking for an open-plan layout, private offices, or a combination of both, we offer a variety of options designed to support your growth and success.

FLOOR	Office Space (approx.)
GROUND	4,780 sq ft
FIRST	4,650 sq ft
SECOND	4,650 sq ft
THIRD	4,770 sq ft
TOTAL	18,850 sq ft



FLOORS 1-3

- 1 Refreshment Point
- 2 Break-Out
- 3 Phone Booths
- 4 Meeting Room

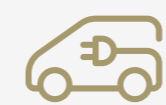


REDEFINING WORKSPACES

Copthall Bridge is designed with an uncompromising commitment to quality and innovation, ensuring that every element of your workspace meets the highest standards. From a welcoming reception area that sets the tone for professionalism, to flexible office spaces tailored for optimal occupancy, our building offers a comprehensive range of tenant amenities that enhance daily work life.



2 minute walk from Harrogate station



Secure car park with EV charging facilities



Smart enabled and ultra-fast Wi-Fi capability



Flexible floorplans and customisable layout



Recruitment

A quality working environment in a desirable location is a consideration for candidates when job searching. Providing a space that is well designed, flexible and convenient shows that your business cares about its people.



Retention

By giving your team a space that enables them to thrive boosts morale and creates a warm working environment. Staff who are happy with their workspace are less likely to look elsewhere for employment.



Brand Alignment

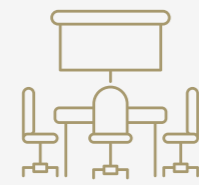
Choosing a space that aligns with your brand is essential. This reinforces your brand values by having a professional and contemporary feel that sets the tone from the moment you walk through the door.



Staff Performance

Give your staff the opportunity to do their best work in an environment that enables flexibility. Activity based working allows scope for staff to find a space that works best for their task at hand from focused work to collaboration with team members.

EVERYTHING YOU NEED, ALL IN ONE PLACE



STATE-OF-THE-ART MEETING SPACES

A variety of fully equipped spaces featuring the latest technology and ergonomic furniture, allowing you to choose the one that best fits the purpose of your meeting.



WORLD-CLASS CONNECTIVITY

Reliable, high-speed internet connectivity throughout the building, ensuring seamless communication and productivity.



WELLBEING ROOM

A dedicated, private space where employees can take time out to tend to their own personal health needs. A calm, quiet space where people can drop in if feeling stressed, anxious, or just in need of some time alone, providing them with a vital break away from the rest of the office.



24/7 ACCESS & SECURITY

Round-the-clock access to your office space, with advanced security systems including CCTV and secure entry points for peace of mind.



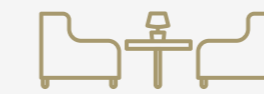
SECURE BIKE STORAGE

Dedicated and secure bike storage facilities encourage eco-friendly commuting and offer a convenient option for cyclists.



SHOWER FACILITIES

On-site shower and changing rooms to support those who exercise during the day or commute by bike, ensuring comfort and convenience.



CORPORATE HUB

A sophisticated business lounge designed for informal meetings, networking, or simply unwinding in a comfortable, professional environment.



EVENT SPACE

Corporate event space offering a professional and flexible setting for corporate gatherings and networking events, exclusive to members and affiliates.

WORK WELL, LIVE GREEN

At WorkWell, sustainability isn't just a consideration — it's a commitment. Copthall Bridge has been designed with eco-friendly principles at its core, from the refurbishment of the building to energy efficient systems.

We've created a workspace that not only supports your business but also contributes to a greener future. By choosing our offices, you're not just investing in a place to work — you're partnering in a commitment to reduce environmental impact and promote a healthier planet.



TRANSPORT

We encourage eco-friendly commuting with our location's excellent access to public transport and secure bike storage.



MANAGEMENT

Our commitment to sustainability is reflected in our proactive management practices, including regular energy audits and green certifications to ensure ongoing environmental responsibility.



ENERGY & CARBON

Our offices are equipped with energy-efficient systems and solar panels that minimise carbon emissions, helping to create a workspace that's as environmentally conscious as it is effective.



HEALTH & WELLBEING

We prioritise the health and wellbeing of our members by integrating natural light, air quality control, and wellbeing rooms that help promote a healthier more productive work environment.



MATERIALS

Sustainable materials have been thoughtfully selected throughout our spaces, ensuring that every element of the office is both durable and eco-friendly.



WASTE MANAGEMENT

We've implemented comprehensive waste management practices, including recycling and composting programs, to minimise waste and support a circular economy.

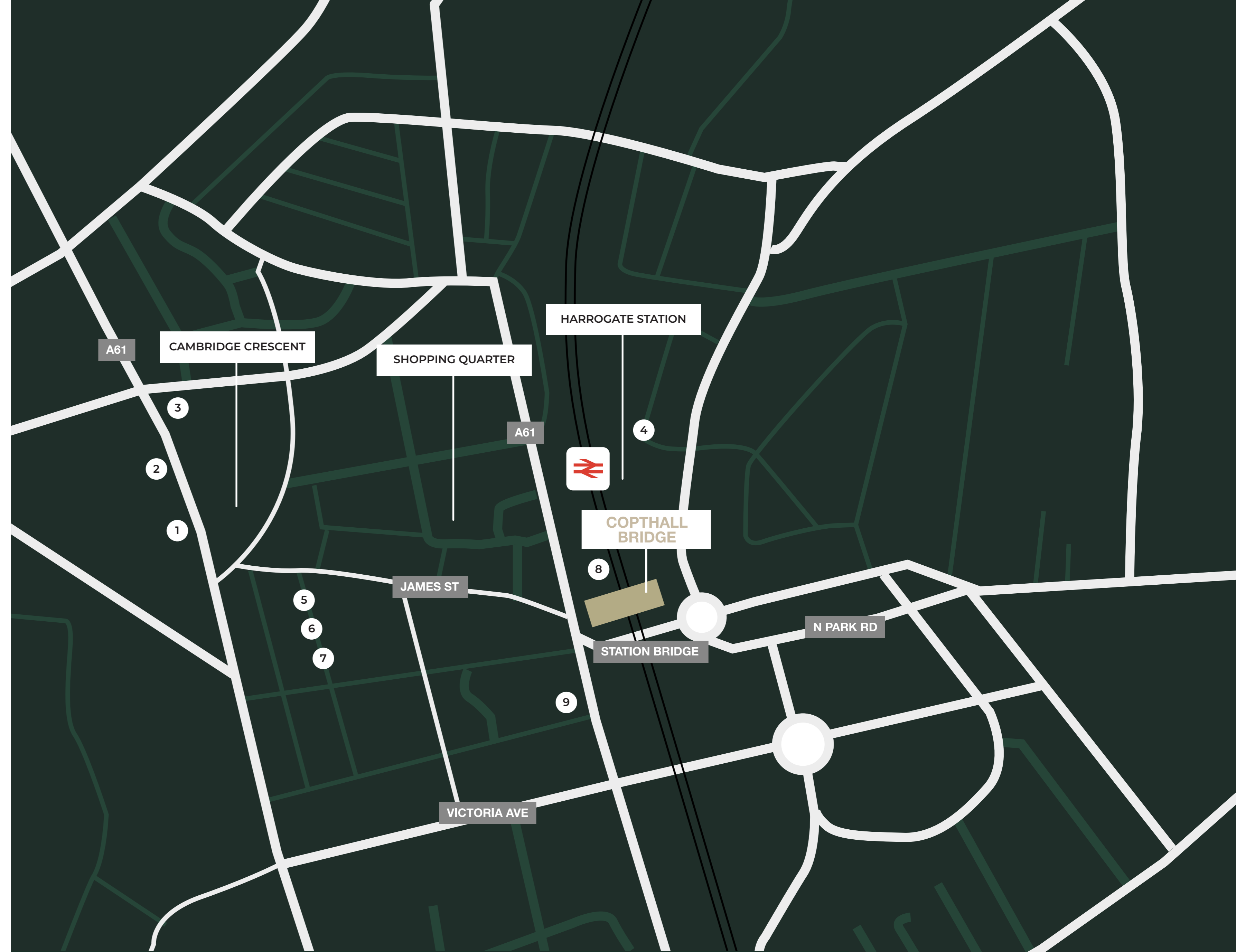


PRIVATE OFFICES & SUITES

SPACE ON-DEMAND

COWORKING MEMBERSHIPS

For more information please contact us
info@workwelloffices.com
0113 385 4480



HIGHLIGHTS

- 1. Betty's Cafe Tea Rooms
- 2. The Ivy Harrogate Garden
- 3. Piccolino
- 4. Victoria Car Park
- 5. Giggling Squid
- 6. Papitos Bar
- 7. The Four Leaf
- 8. The Harrogate Tap
- 9. The Farmhouse



Thank you. For any questions, please contact sales@workwelloffices.com

WORKWELLOFFICES.com