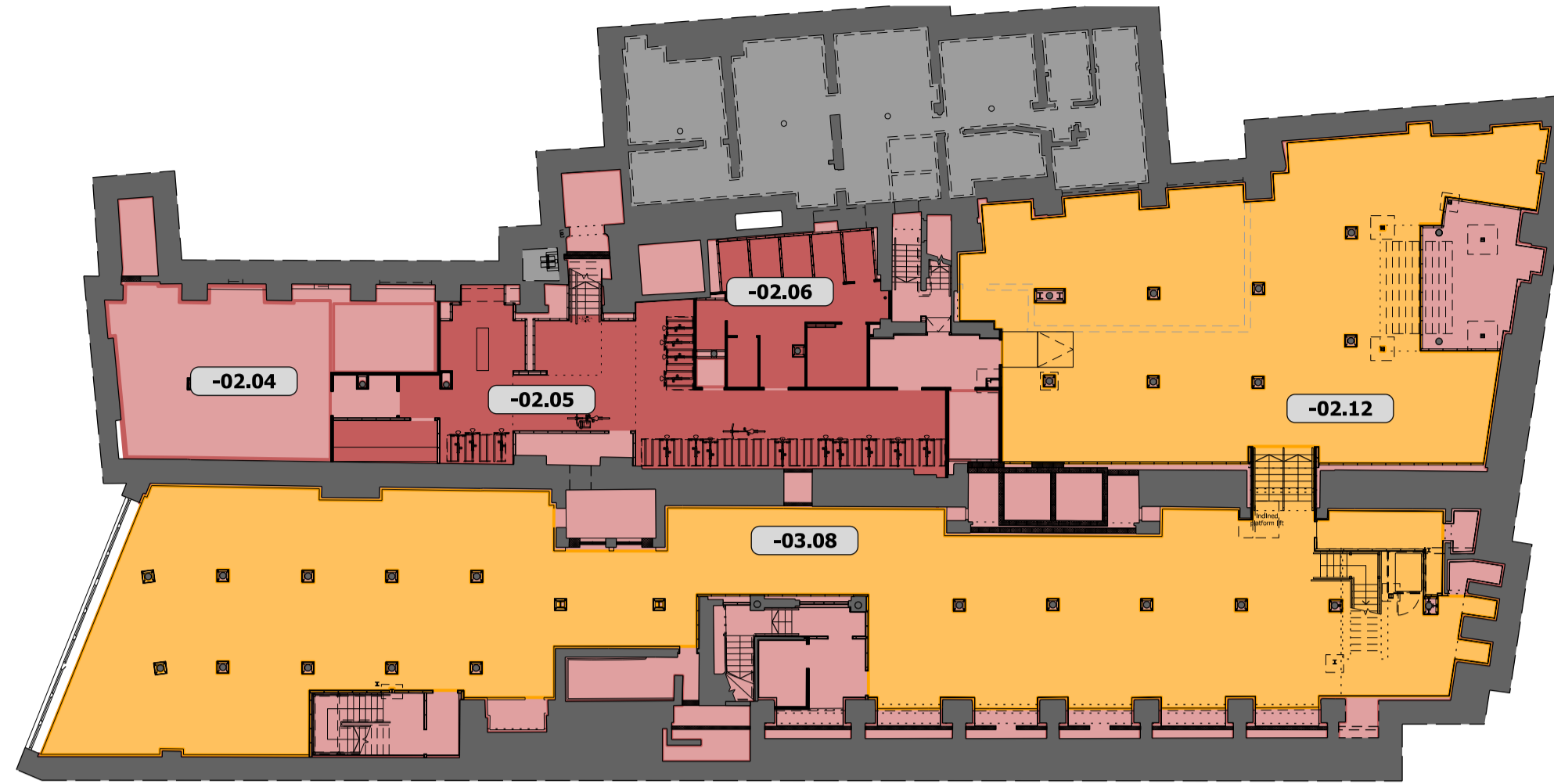




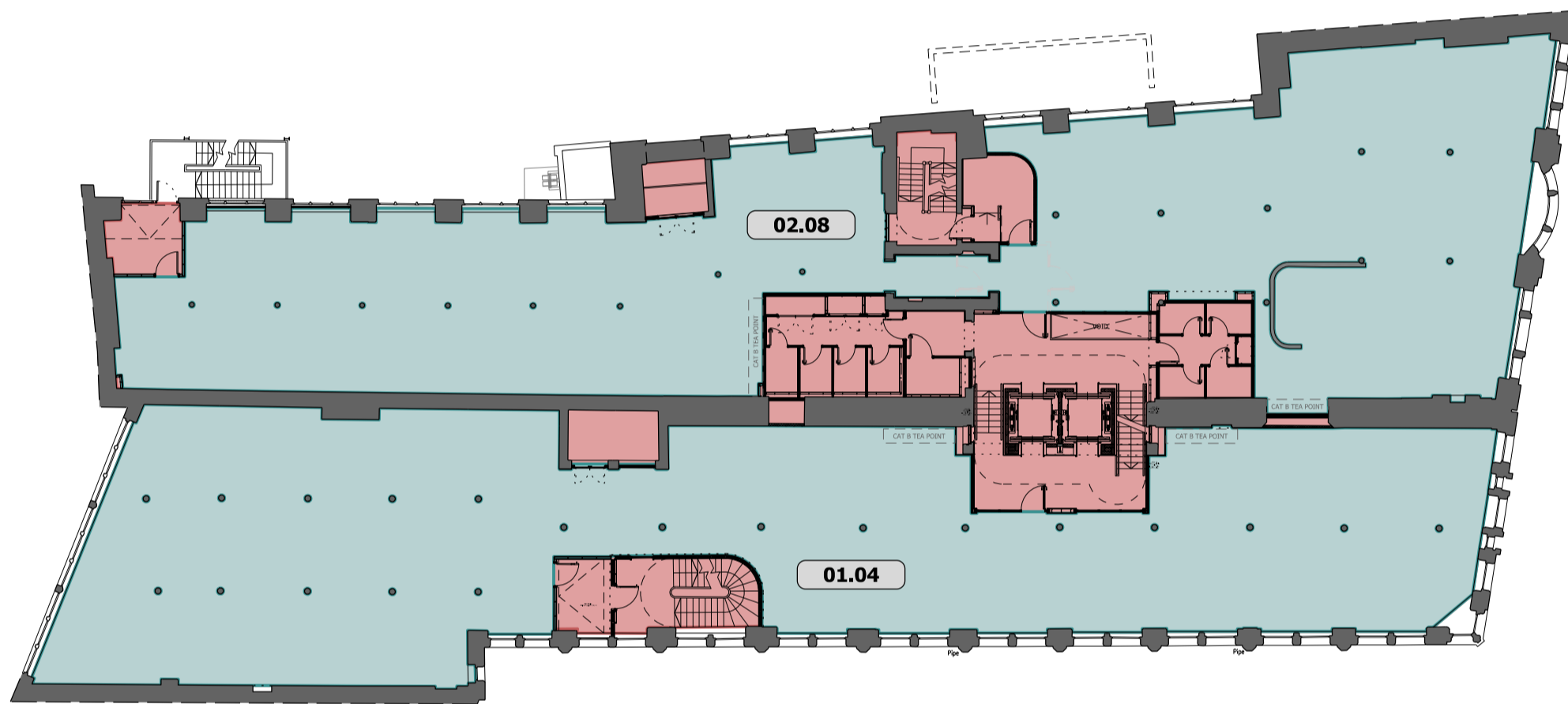
Sub basement floor
(Consisting of levels -05 and -04)



Basement floor
(Consisting of levels -03 and -02)



Ground floor
(Consisting of levels -01 and 00)



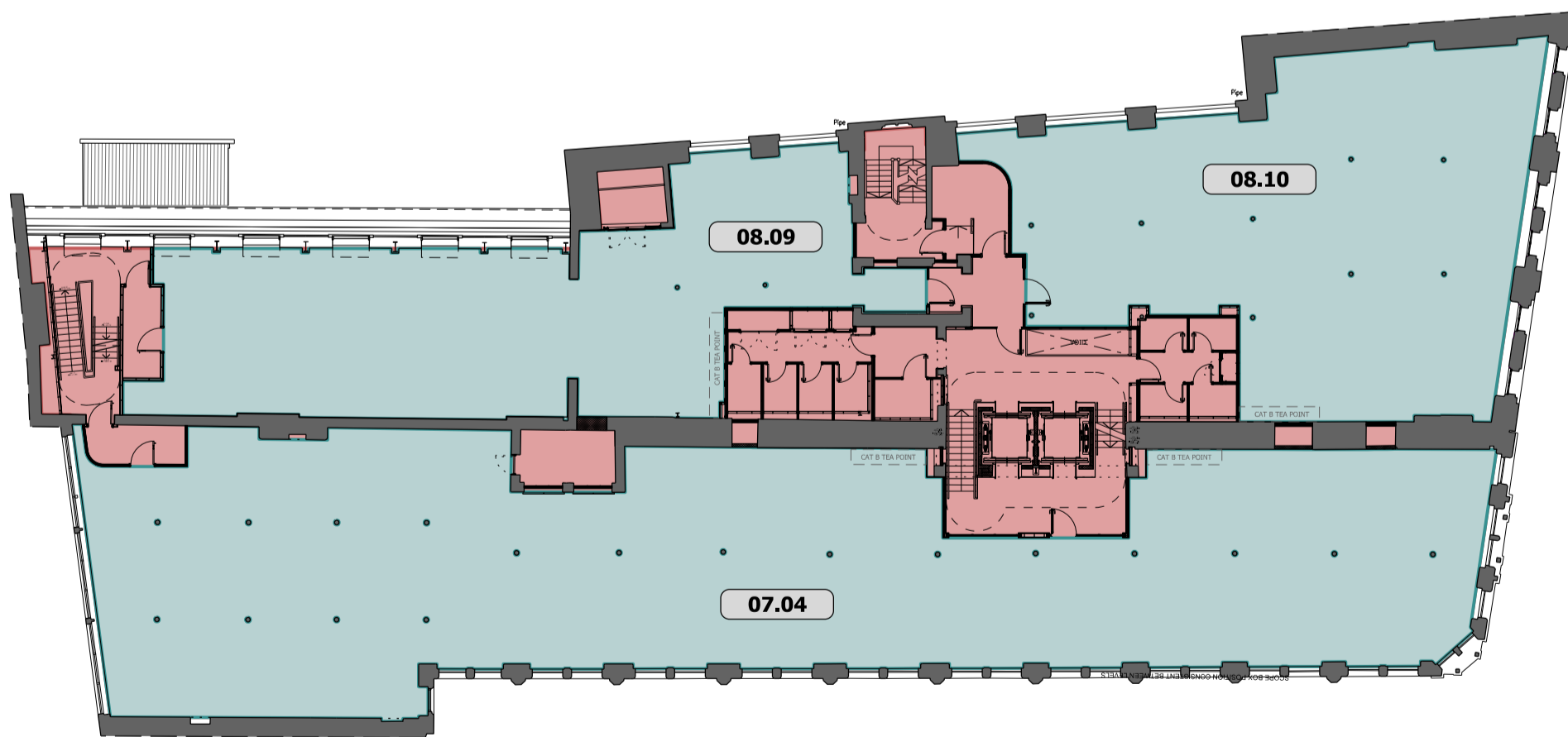
First floor
(Consisting of levels 01 and 02)



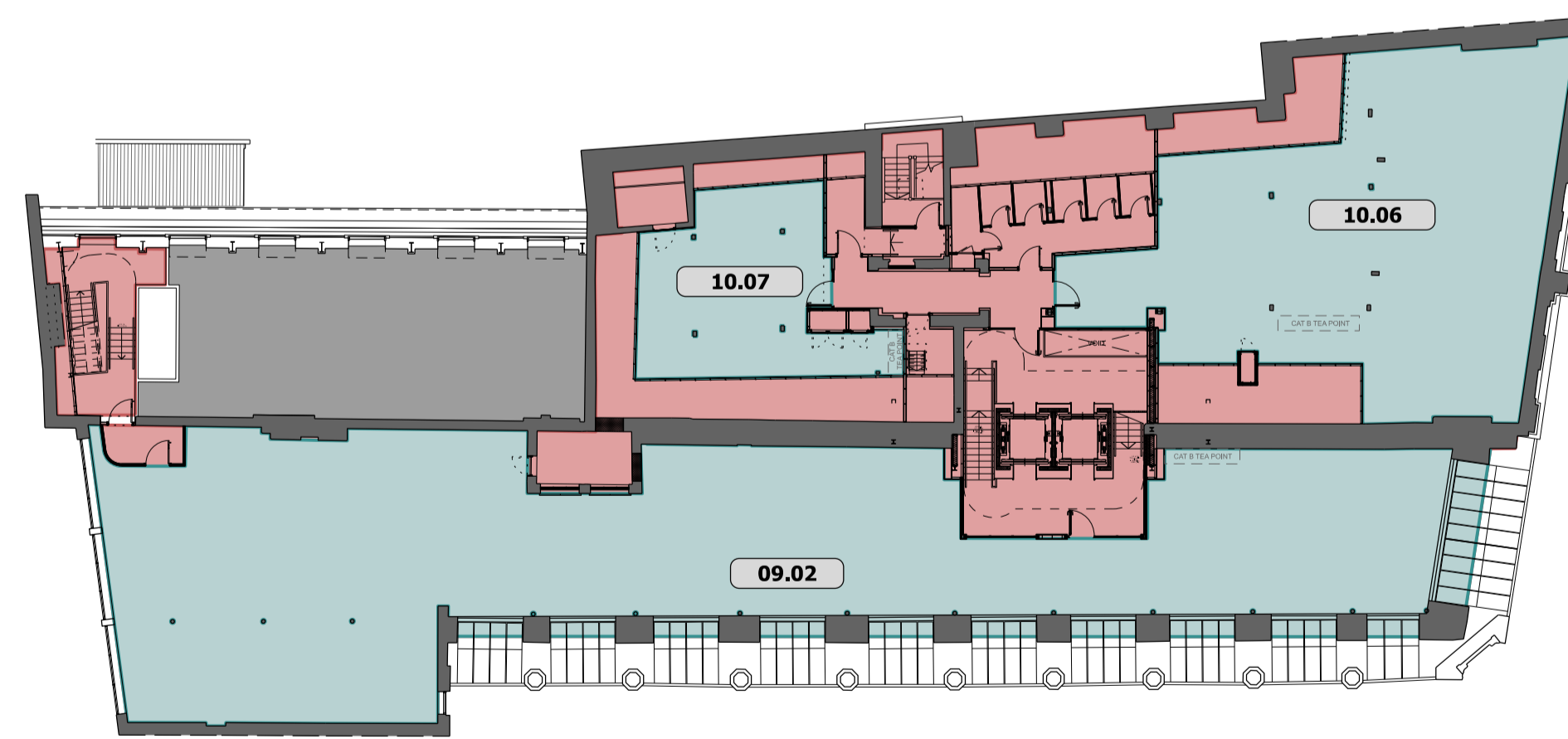
Second floor
(Consisting of levels 03 and 04)



Third floor
(Consisting of levels 05 and 06)



Fourth floor
(Consisting of levels 07 and 08)



Fifth floor
(Consisting of levels 09 and 10)

- GIA 8,550sqm
- NIA Amenity
- NIA Gym 685sqm
(gym plant room required within lettable area)
- NIA Office 4996sqm

Level	Demise	NIA (sqm)	NIA (sqft)
-5	-05.1 TBC	71.1	765
-4	-04.1 TBC	114.6	1234
-3	-03.08 Gym	437.1	4705
-2	-02.04 Plant room	62.0	667
	-02.05 Cycle store	101.0	1087
	-02.06 Changing	43.0	463
	-02.07 Boiler room	12.4	135
	-02.08 Drying room	7.7	83
	-02.09 Cleaner's store	1.5	16
	-02.12 Gym	245.4	2641
	-02.13 Comms Room	6.6	71
-1	-01.12 Office suite	335.7	3613
	-01.13 Gym entrance	31.8	342
0	00.08 Reception + hub	248.2	2672
	00.10 Office suite	231.7	2494
1	01.04 Office suite	487.5	5247
2	02.08 Office suite	484.0	5210
3	03.04 Office suite	455.0	4898
4	04.08 Office suite	488.7	5260
5	05.04 Office suite	456.5	4914
6	06.09 Office suite	463.7	4991
7	07.04 Office suite	480.6	5173
8	08.09 Office suite	200.5	2158
	08.10 Office suite	235.2	2532
9	09.02 Office suite	425.0	4575
10	10.06 Office suite	193.4	2082
	10.07 Office suite	58.2	626
Total		6378.1	6854