



Town Hall Tavern, Stockport

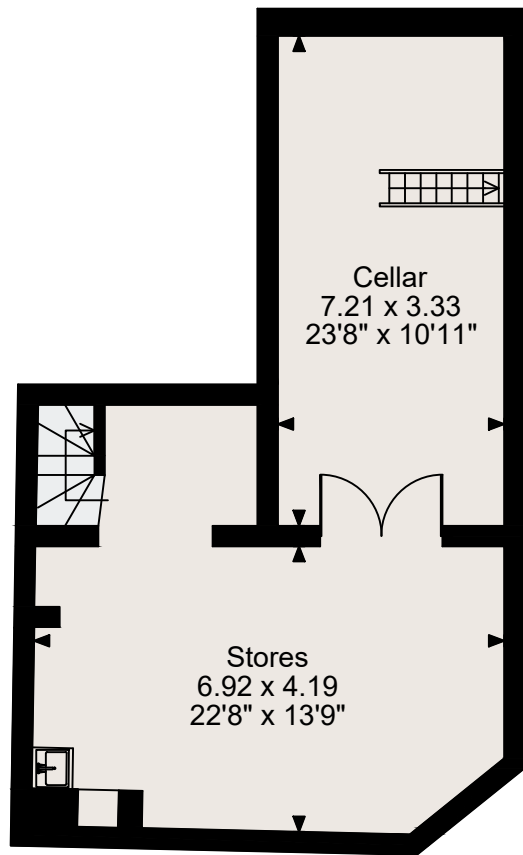
Basement gross internal area = 636 sq ft / 59 sq m

Ground Floor gross internal area = 1,163 sq ft / 108 sq m

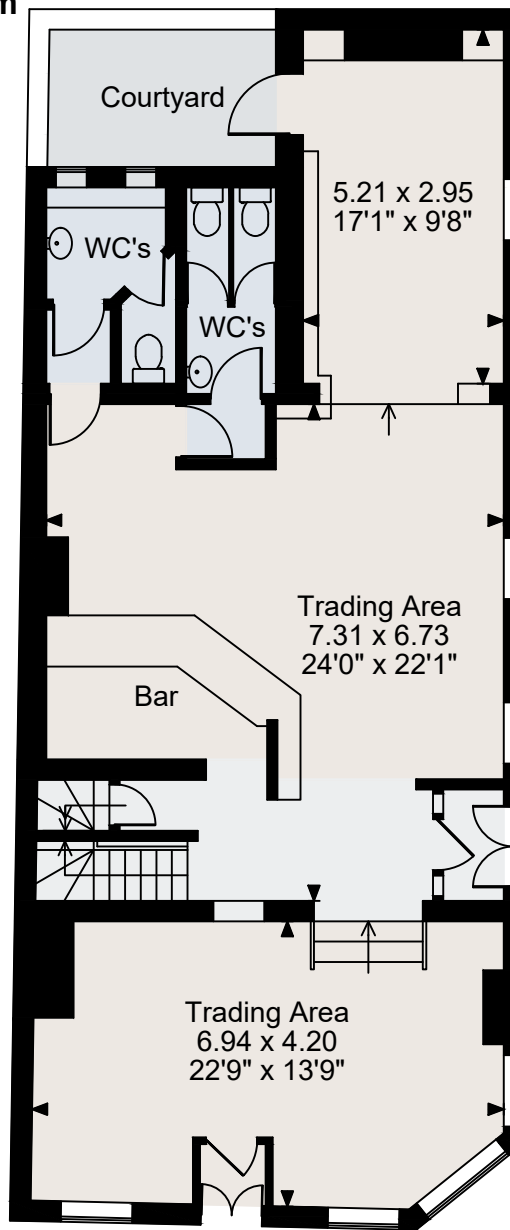
First Floor gross internal area = 995 sq ft / 92 sq m

Total gross internal area = 2,794 sq ft / 260 sq m

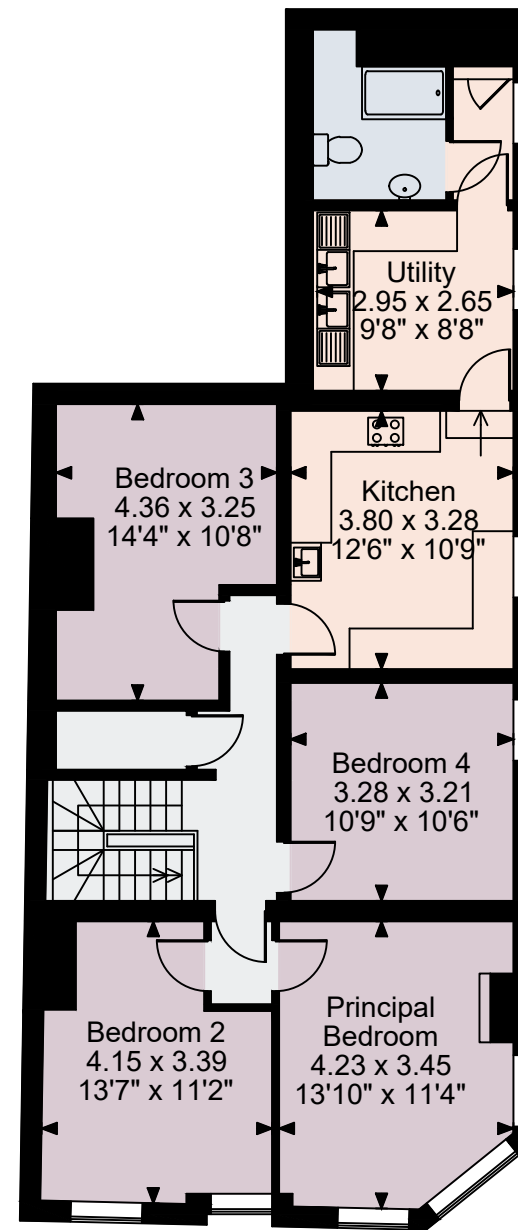
Quoted Area Excludes 'Courtyard'



Basement



Ground Floor



First Floor

FOR ILLUSTRATIVE PURPOSES ONLY - NOT TO SCALE

The position & size of doors, windows, appliances and other features are approximate only.

© ehouse. Unauthorised reproduction prohibited. Drawing ref. dig/8593268/MRB