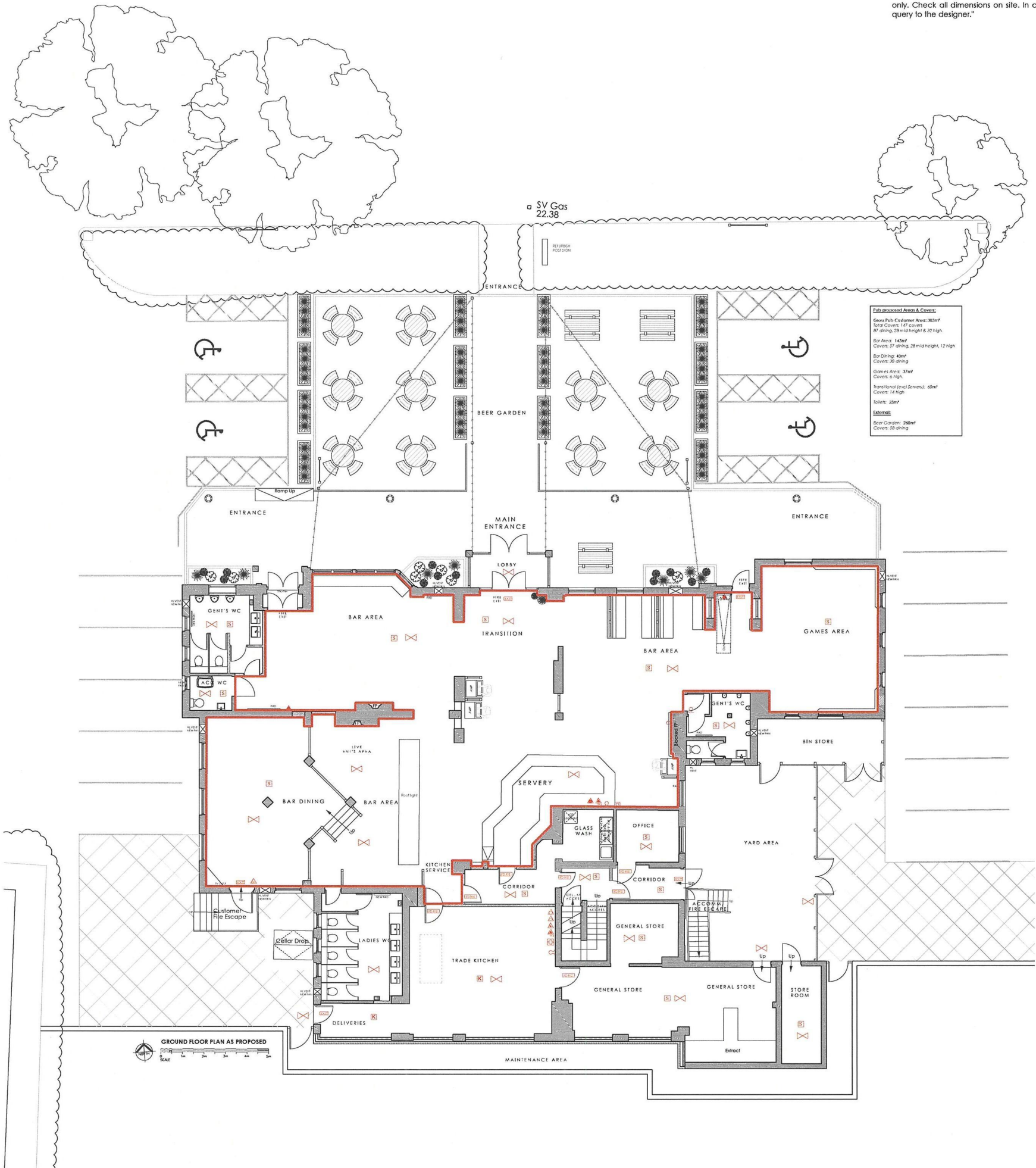


"Copyright in this drawing remains with the designer. Responsibility is not accepted for errors made by others in scaling from this drawing. All construction information should be taken from figured dimensions only. Check all dimensions on site. In case of any discrepancy, refer query to the designer."



**LICENSABLE ACTIVITIES**

**KEY TO LICENSING SYMBOLS (Note Existing fittings are marked 'EP')**

	Emergency Lighting Luminaire		6L Wet Chemical (Fol Fighter) Fire Extinguisher
	Illuminated emergency exit sign mounted above door indicating escape route (pictorial on approach side)		Foam Fire Extinguisher
	Illuminated emergency exit directional sign (pictorial on approach side), direction indicated		9L Water Fire Extinguisher
	Illuminated emergency exit sign suspended above head height 90-degree, to escape route (pictorial on approach side)		6L Hydrospray Fire Extinguisher
	Break Glass Fire Alarm Manual call point		Fire Blanket
	Fire Alarm electronic sounder		Dry Powder Fire Extinguisher
	Heat/Smoke Detector		2kg, or 5kg, Carbon Dioxide Fire Extinguisher
	Fire Alarm Control Panel		9L F-Class Fire Extinguisher
	Fire Alarm Zenon Beacon		Vision panel in door
	30-minute fire resistant solid core door		escape ironmongery (push bars/pads) on doors
	30-minute fire resistant solid core door with smoke seal		First Aid kit box
	one-hour fire resistant solid core door with smoke seal		

THE CURRENT LOCATION OF FIRE SAFETY EQUIPMENT AND OTHER EQUIPMENT IS SHOWN. THESE MAY BE SUBJECT TO VARIATION / MOVEMENT IN THE FUTURE AS NECESSARY AND WHERE APPLICABLE CHANGE WILL BE DONE IN CONSULTATION WITH THE FIRE OFFICER. THE LOCATION OF ALL EQUIPMENT MUST BE VERIFIED BY THE BODY CARRYING OUT THE PROJECT POST COMPLETION FRA PRIOR TO OCCUPATION OF THE PREMISES.

PL000032



20/06/2020

	Rev	Description	By	Date
	<b>INVENTIVE DESIGN ASSOCIATES</b> ARCHITECTURE & INTERIOR DESIGN			
	57 Station Road, Cheadle Hulme Stockport, Greater Manchester SK8 7AA Company Reg No: 9251414			
	<b>THE MOSS VALE</b> Lostock Road, Urmston, M41 0TA For Punch Taverns <b>PROPOSED LICENSING PLAN</b>			
0161 428 0310 office@inventiveda.com www.inventiveda.com @inventiveda	DRAWN MBG DATE 19-2-20 SCALE 1:100@A1	DATE 19-2-20 REV. -	DRAWING NO. 1960-501	