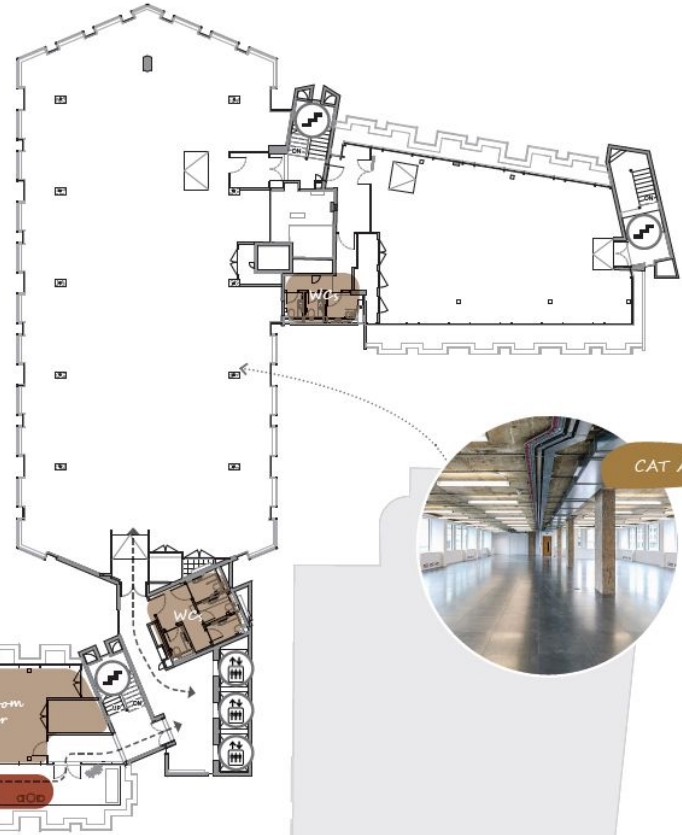


# 5th Floor Office Space & Roof Terrace

- Main tower (5.1k) and Marsden Street wing (2k) measuring circa 7.1k sq ft  
Above suites let as one suite.

- Convenient access to the King Street Roof Terrace
- Floor to ceiling glazing
- New exposed HVRF air conditioning and LED Pendant Lighting



**5th Floor  
Office Space**  
Marsden  
Street  
Extension  
(new build)



# King Street Communal Roof Terrace

