

King's Head, Yarmouth

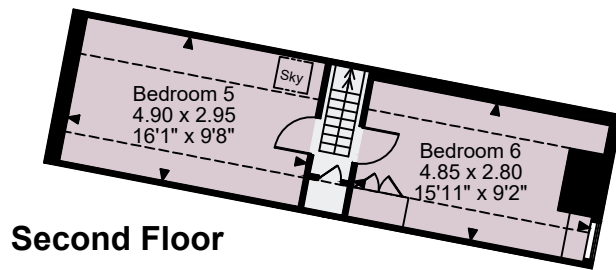
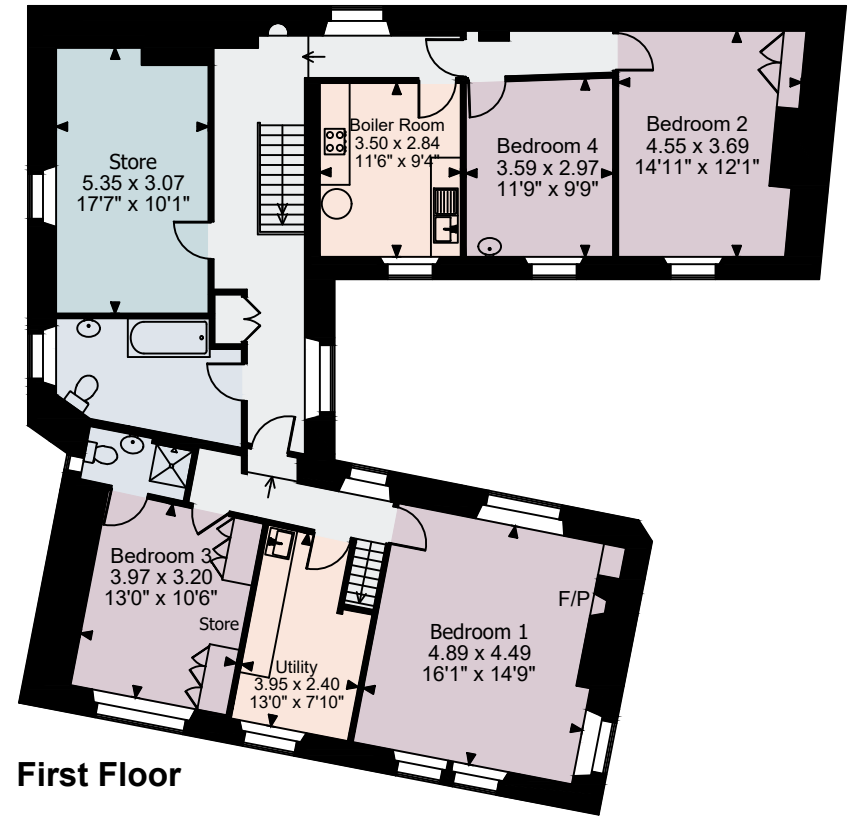
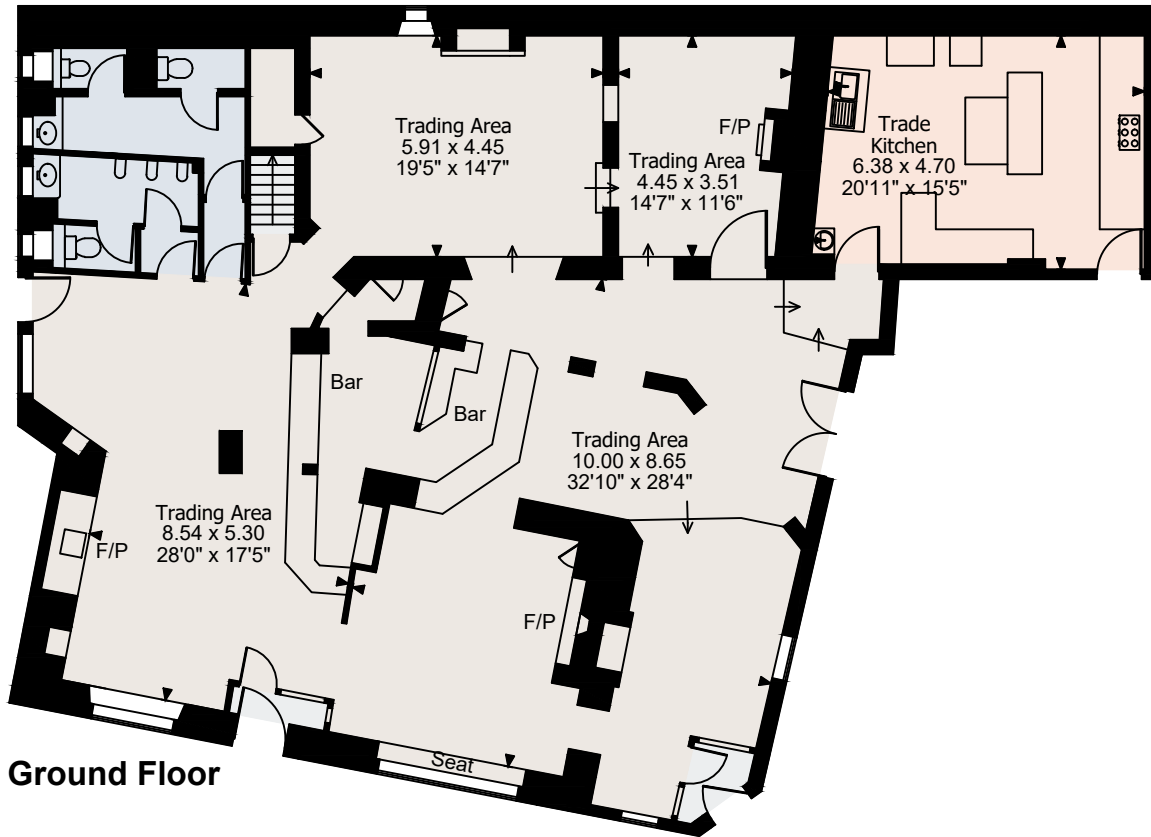
Ground Floor gross internal area = 2,691 sq ft / 250 sq m

First Floor gross internal area = 1,459 sq ft / 136 sq m

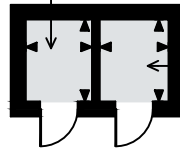
Second Floor gross internal area = 172 sq ft / 16 sq m

Outbuildings gross internal area = 411 sq ft / 38 sq m

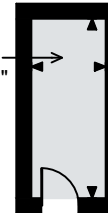
Total gross internal area = 4,733 sq ft / 440 sq m



External Freezer
1.65 x 1.34
5'5" x 4'5"

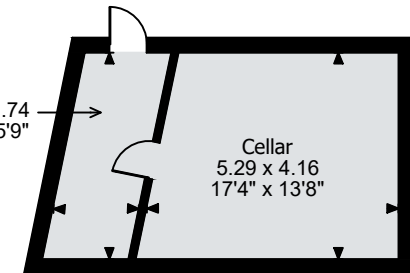


Log Store
3.62 x 1.50
11'11" x 4'11"



External Freezer
1.65 x 1.39
5'5" x 4'7"

5.29 x 1.74
17'4" x 5'9"



FOR ILLUSTRATIVE PURPOSES ONLY - NOT TO SCALE

The position & size of doors, windows, appliances and other features are approximate only.

☐☐☐☐ Denotes restricted head height

© ehous. Unauthorised reproduction prohibited. Drawing ref. dig/8669069/SLU