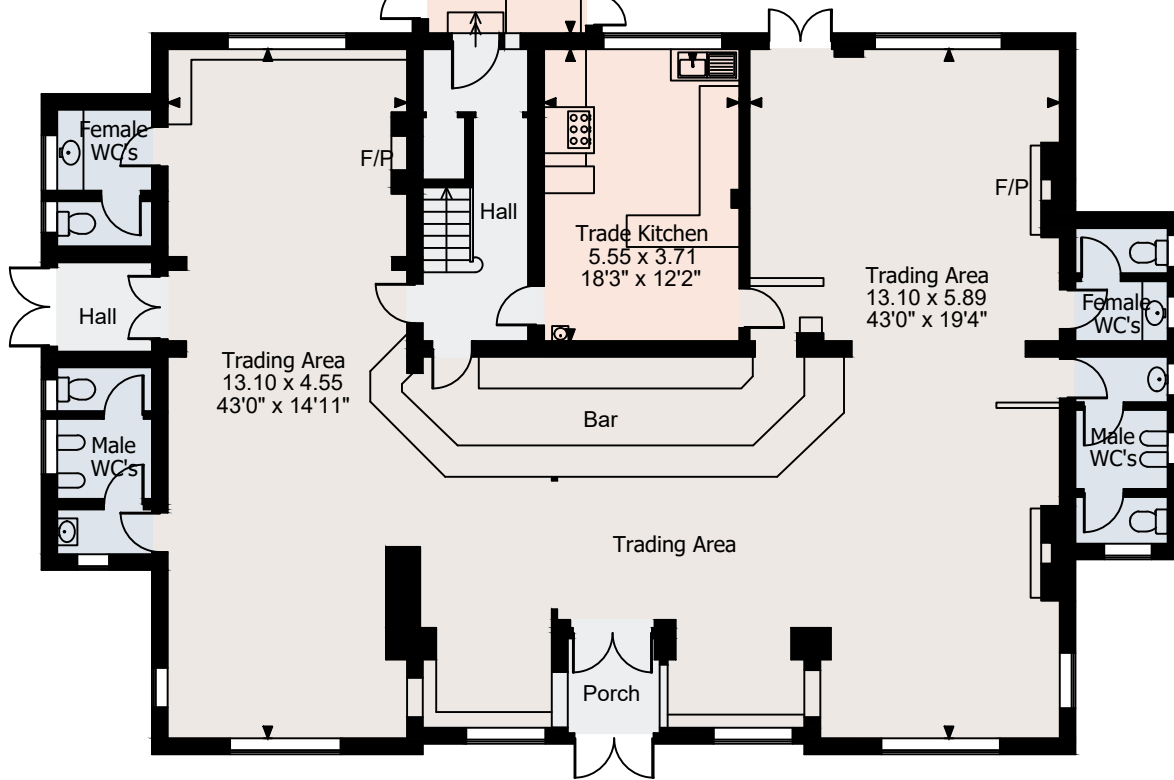
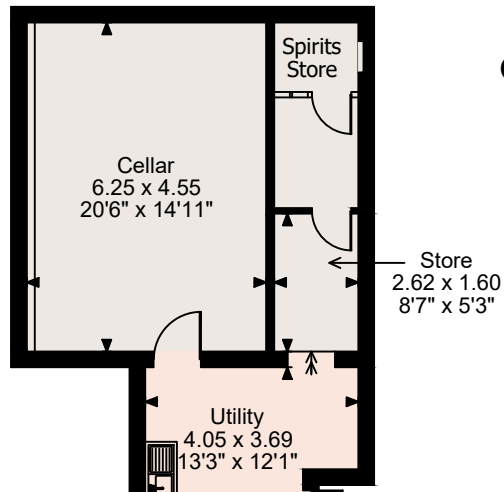


Garden Bar, Hove

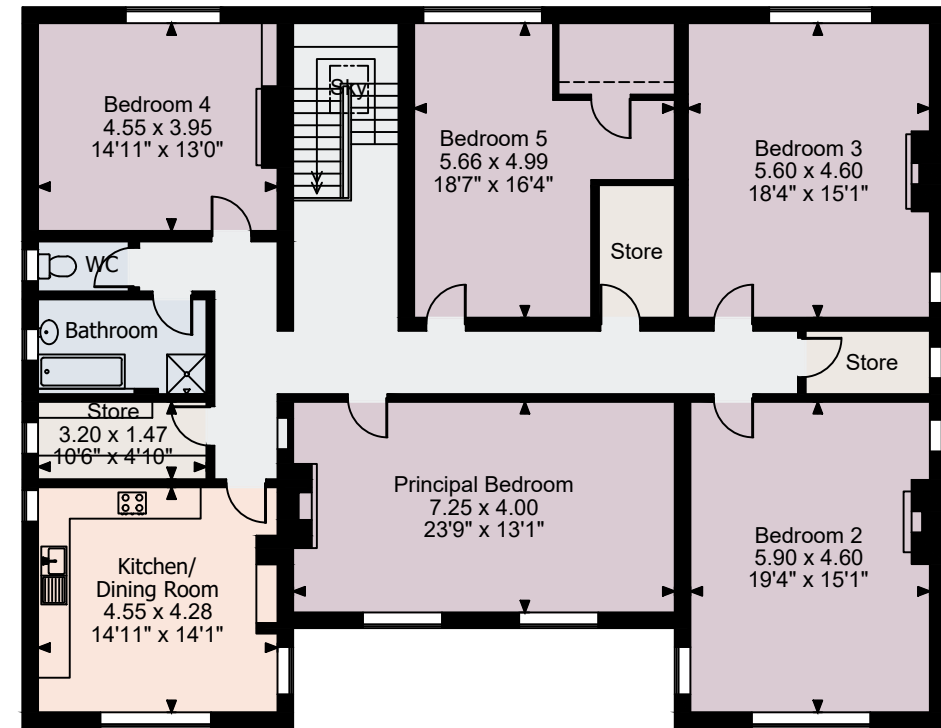
Ground Floor gross internal area = 3,286 sq ft / 305 sq m

First Floor gross internal area = 2,194 sq ft / 204 sq m

Total gross internal area = 5,480 sq ft / 509 sq m



Ground Floor



First Floor

FOR ILLUSTRATIVE PURPOSES ONLY - NOT TO SCALE

The position & size of doors, windows, appliances and other features are approximate only.

□□□□ Denotes restricted head height

© ehouse. Unauthorised reproduction prohibited. Drawing ref. dig/8658068/DWL