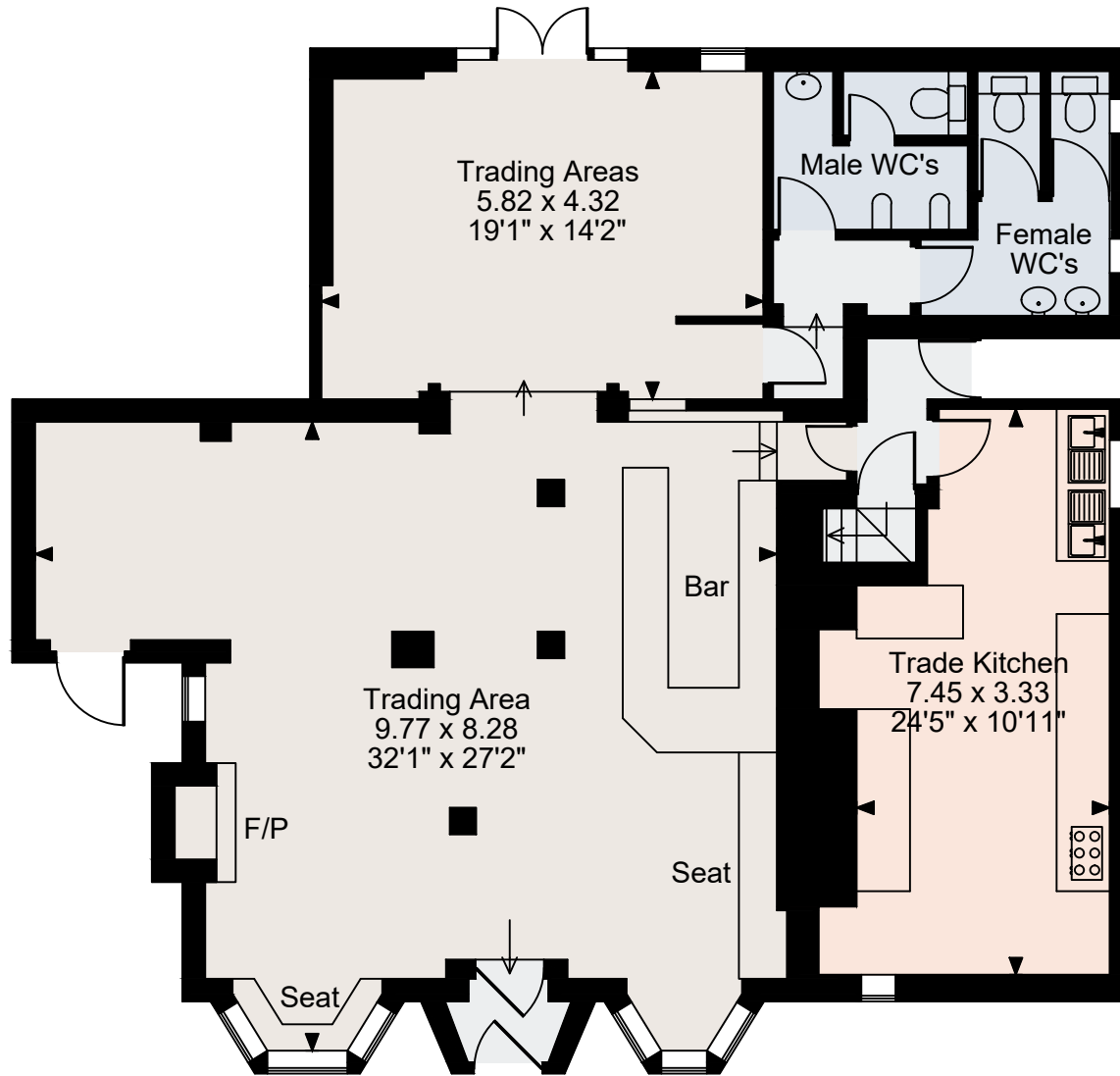
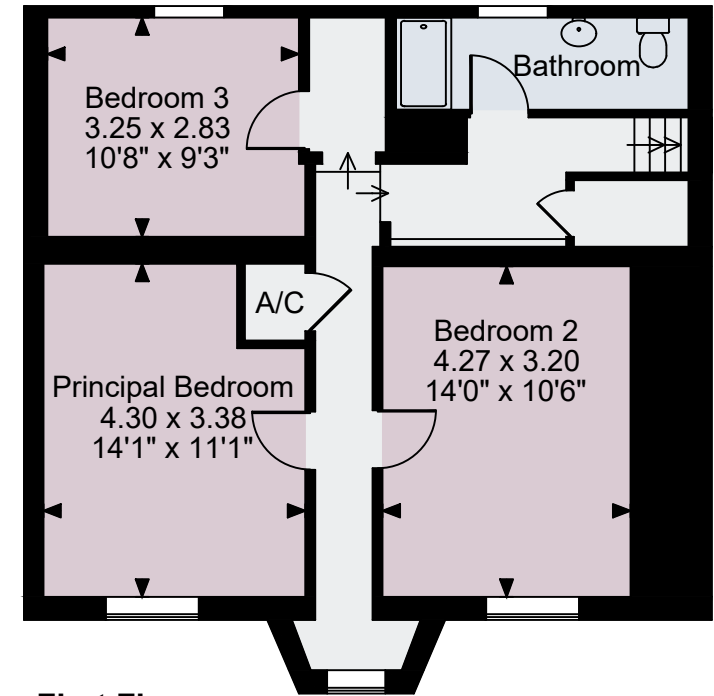
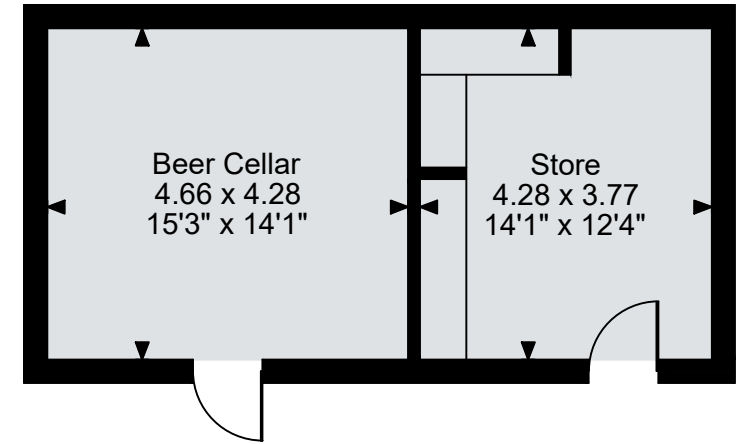


Crown & Stirrup, Clay Hill, Lyndhurst
Ground Floor gross internal area = 1,543 sq ft / 143 sq m
First Floor gross internal area = 647 sq ft / 60 sq m
Beer Cellar and Store gross internal area = 395 sq ft / 37 sq m
Total gross internal area = 2,585 sq ft / 240 sq m



Ground Floor



First Floor

FOR ILLUSTRATIVE PURPOSES ONLY - NOT TO SCALE

The position & size of doors, windows, appliances and other features are approximate only.

© ehouse. Unauthorised reproduction prohibited. Drawing ref. dig/8658063/JOV