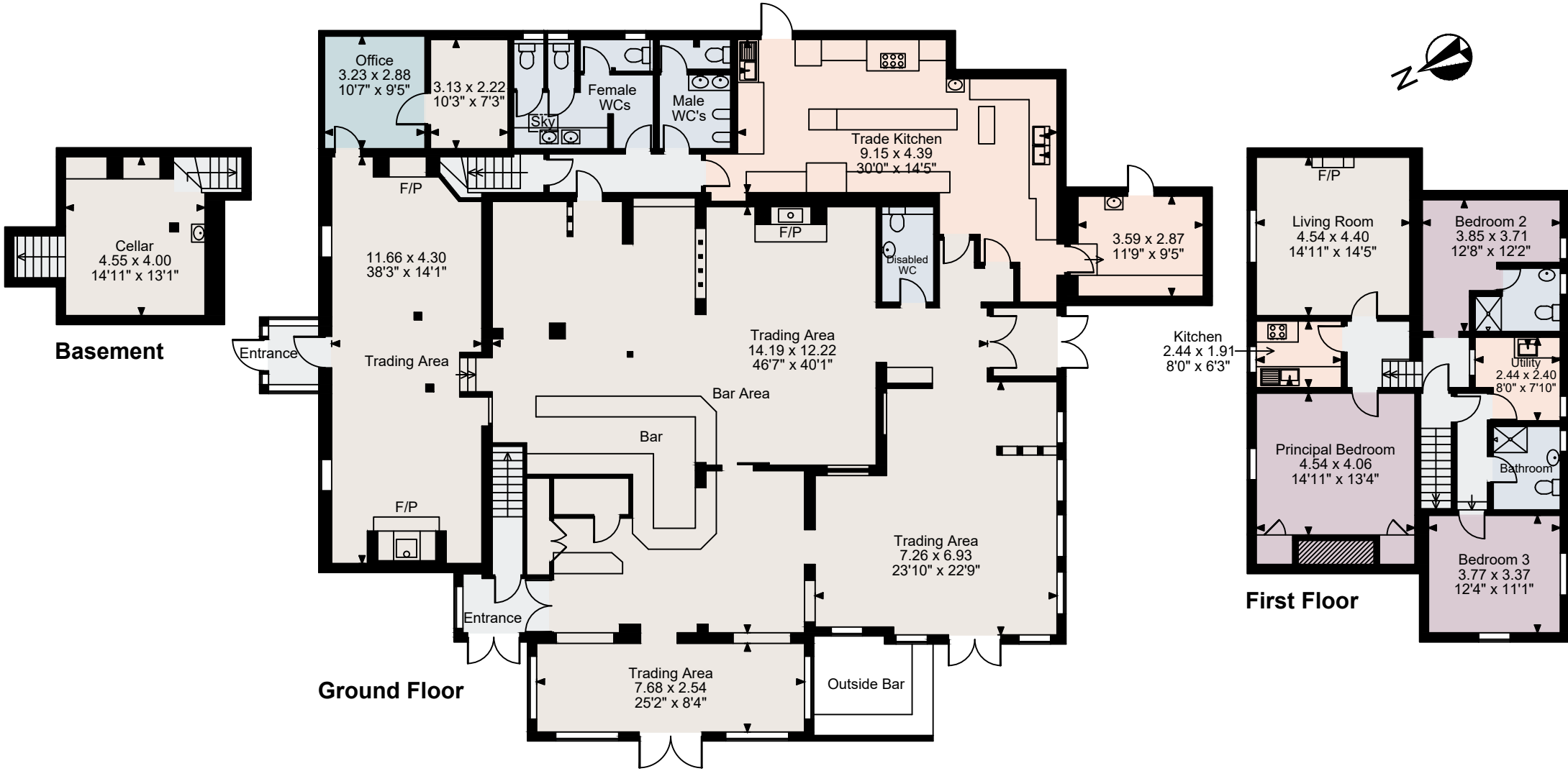


Malthouse, Romsey

Basement gross internal area = 205 sq ft / 19 sq m
 Ground Floor gross internal area = 4,091 sq ft / 380 sq m
 First Floor gross internal area = 1,101 sq ft / 102 sq m
 Total gross internal area = 5,397 sq ft / 501 sq m
 Quoted Area Excludes 'Outside Bar'



FOR ILLUSTRATIVE PURPOSES ONLY - NOT TO SCALE

The position & size of doors, windows, appliances and other features are approximate only.

© ehouse. Unauthorised reproduction prohibited. Drawing ref. dig/8658070/JLW