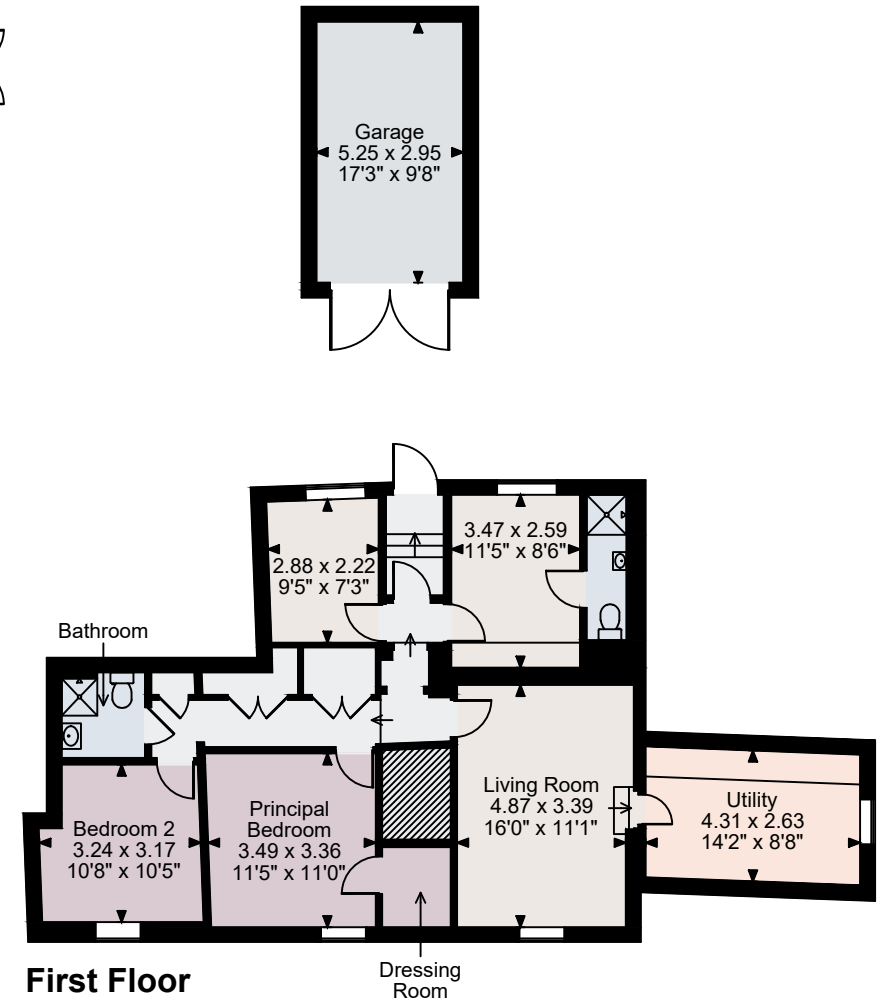
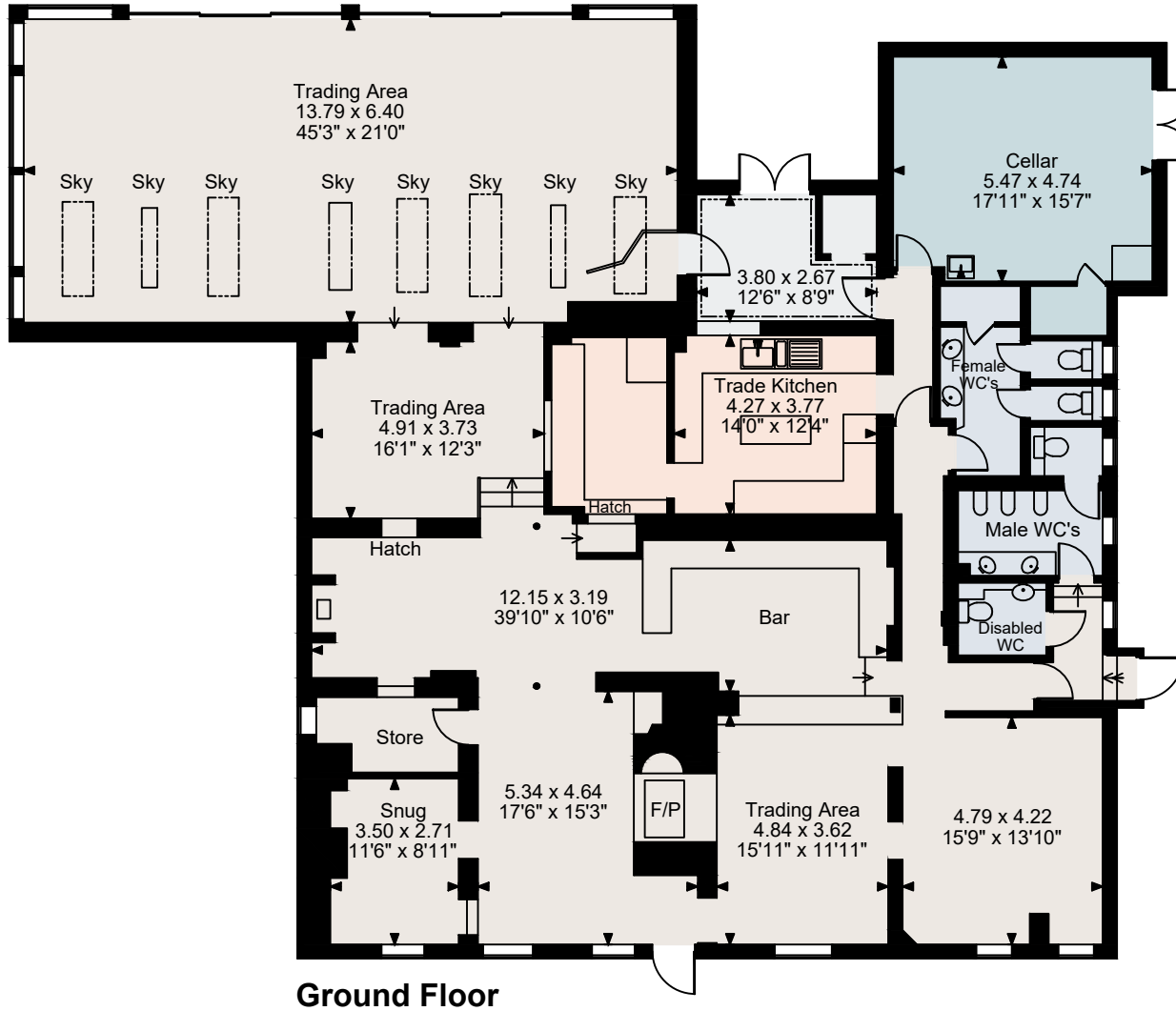


Coventry Arms, Wimborne
Ground Floor gross internal area = 3,749 sq ft / 348 sq m
First Floor gross internal area = 1,039 sq ft / 97 sq m
Garage gross internal area = 167 sq ft / 15 sq m
Total gross internal area = 4,955 sq ft / 460 sq m



FOR ILLUSTRATIVE PURPOSES ONLY - NOT TO SCALE

The position & size of doors, windows, appliances and other features are approximate only.

© ehouse. Unauthorised reproduction prohibited. Drawing ref. dig/8658062/JOV