

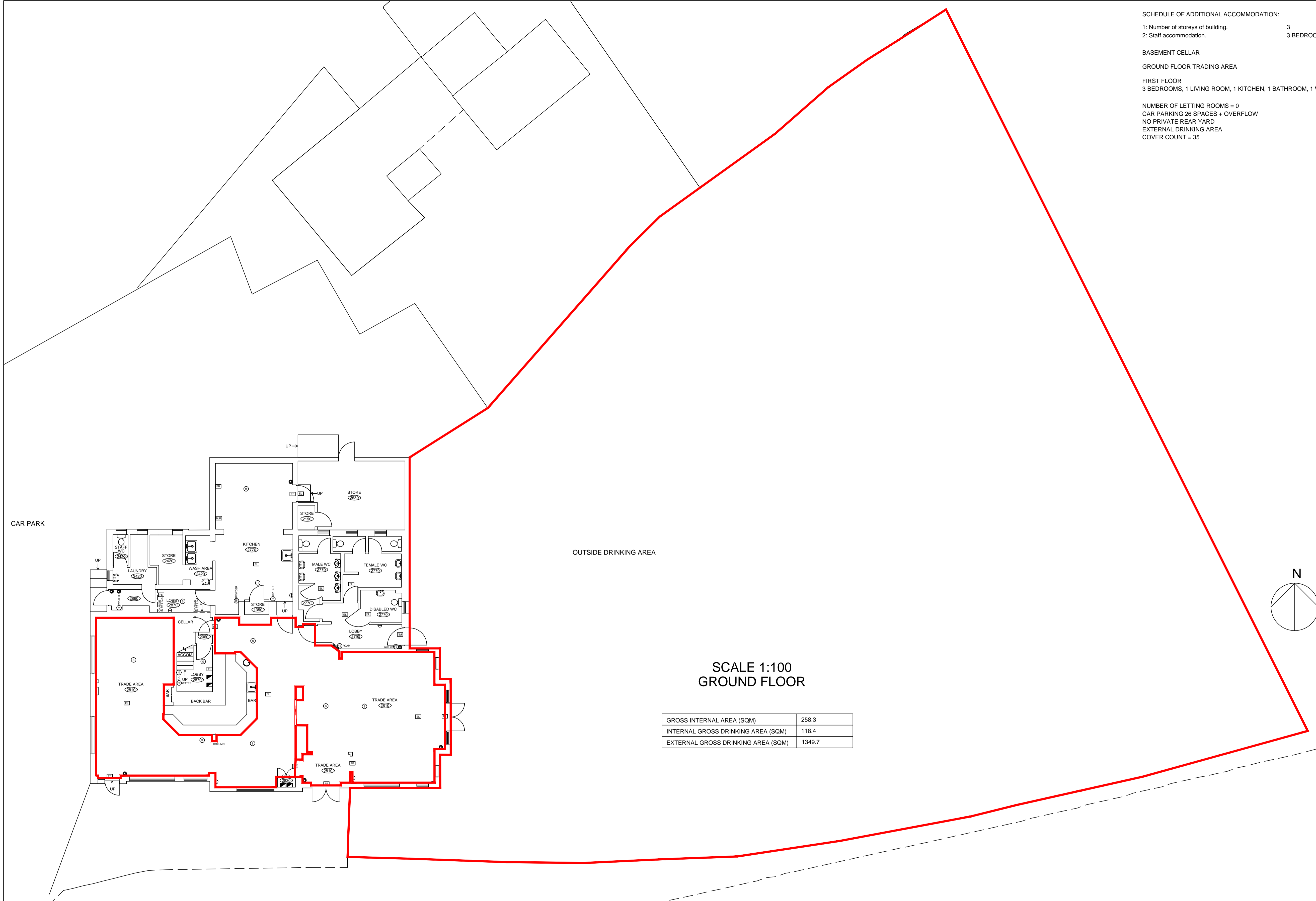
SCHEDULE OF ADDITIONAL ACCOMMODATION:  
 1: Number of storeys of building. 3  
 2: Staff accommodation. 3 BEDROOMED

BASEMENT CELLAR  
 GROUND FLOOR TRADING AREA

FIRST FLOOR  
 3 BEDROOMS, 1 LIVING ROOM, 1 KITCHEN, 1 BATHROOM, 1 WC, 1 OFFICE

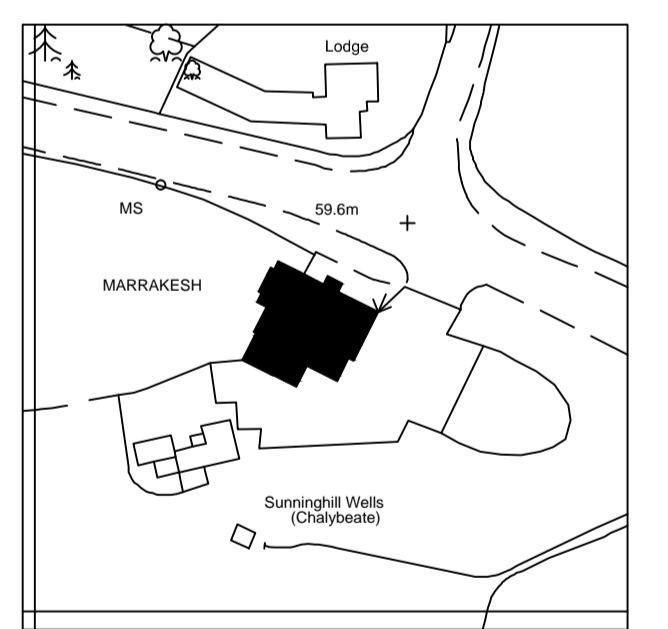
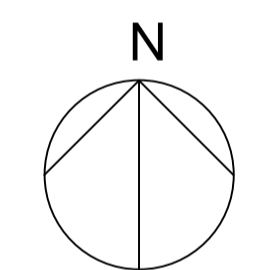
NUMBER OF LETTING ROOMS = 0  
 CAR PARKING 26 SPACES + OVERFLOW  
 NO PRIVATE REAR YARD  
 EXTERNAL DRINKING AREA  
 COVER COUNT = 35

- LEGEND
- CEILING HEIGHT
  - WINDOW
  - FIRE PLACE
  - DOOR
  - TOILET
  - URINAL
  - WASH HAND BASIN
  - BOILER
  - FIRE EXIT
  - EMERGENCY LIGHT
  - DISTRIBUTION BOARD
  - FIRE ALARM CALL POINT
  - BELL SOUNDER
  - SMOKE DETECTOR
  - HEAT DETECTOR
  - FIRE BLANKET
  - FIRE EXTINGUISHER CO<sub>2</sub>
  - FIRE EXTINGUISHER FOAM
  - FIRE EXTINGUISHER WATER
  - FIRE EXTINGUISHER POWDER
  - SPRINKLER OUTLETS
  - DRY RISER
  - WET RISER
  - STEPS
  - SINK UNIT
  - AMUSEMENT WITH PRIZES
  - BAR FLAP



SCALE 1:100  
GROUND FLOOR

GROSS INTERNAL AREA (SQM)	258.3
INTERNAL GROSS DRINKING AREA (SQM)	118.4
EXTERNAL GROSS DRINKING AREA (SQM)	1349.7



INDICATIVE ONLY  
SCALE 1:1250

C.A.Design Services Ltd  
 The Design Centre  
 Hewett Road  
 Gapton Hall  
 Great Yarmouth  
 Norfolk NR31 ONN  
 Tel : 01493 440444  
 Fax : 01493 442480  
 www.cadesignservices.co.uk

Drawing on experience

MEMBER OF  
  
 THE SURVEY ASSOCIATION

Measured Building surveys, M & E Surveys, Site Surveys, CAD training, CAD Draughting, Document Scanning, AutoCad & Microstation Sales. cad@cadesignservices.co.uk

Project MARRAKESH ASCOT
Drawing Title LICENCE AREA SURVEY
Gross Internal Area (M <sup>2</sup> ) 258.3
Licensable Activity Area (M <sup>2</sup> ) 1468.1
Client GREENE KING PUB PARTNERS

**Greene King Pub Partners**

Abbot House  
 Westgate Street  
 Bury St.Edmunds  
 Suffolk  
 IP33 1QT

Phone: 01284 763222  
 Fax: 01284 706502  
 URL: www.greenekingpubs.co.uk

All dimensions to be checked on site prior to commencement of works.

Rev	Details Of Amendment	Drawn	Approved	Date
Scale 1:100	Date Surveyed 25/01/05	Drawing No. 5622_LP1	Rev. 0	