

KEY

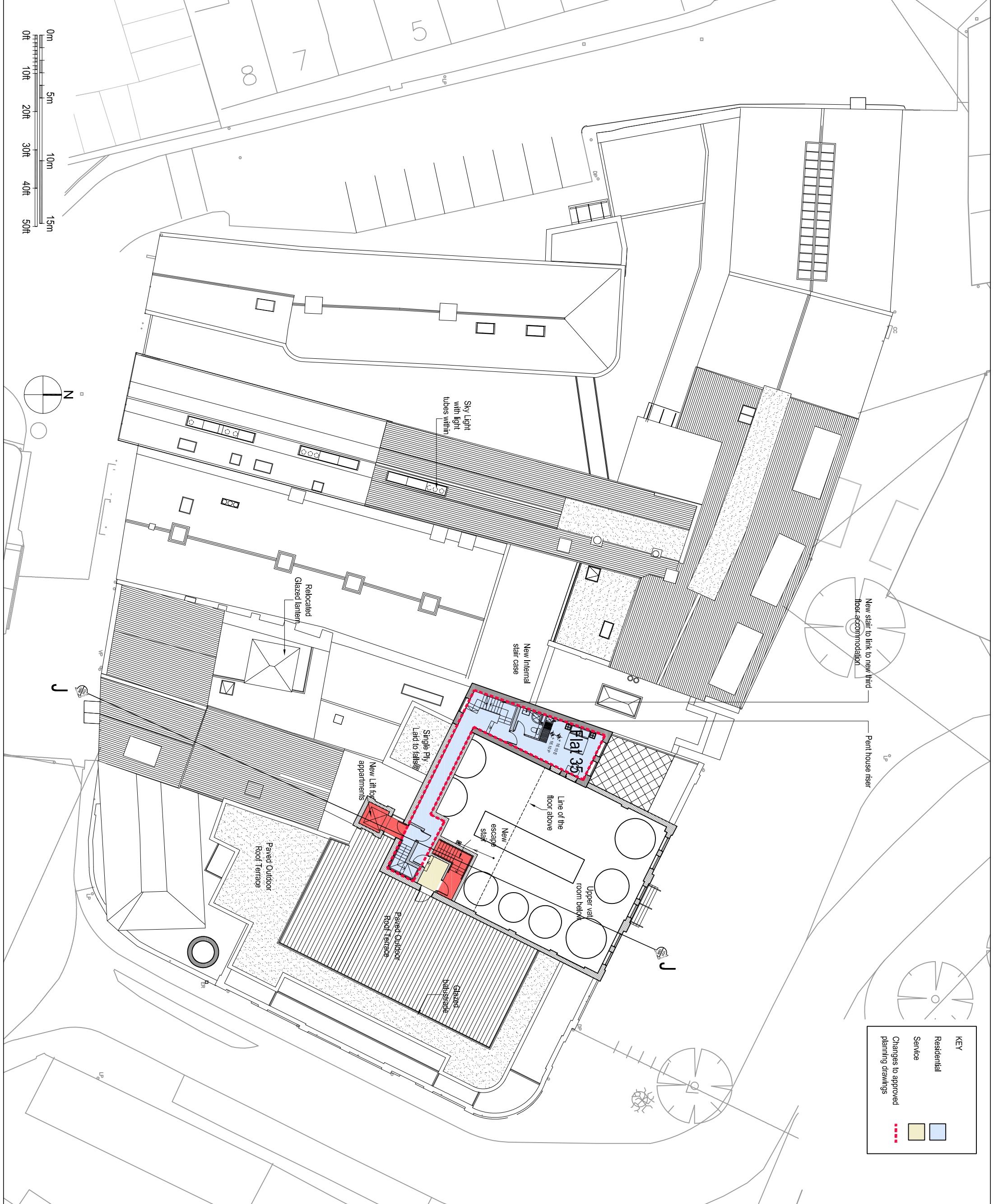
Residential

Service

Changes to approved planning drawings

Do not scale from this drawing, except for item identification purposes.
 Work is based on ground levels.
 This drawing is the property of Brimelow McSwiney Architects and copyright is reserved by them.
 This drawing is issued on condition that it is not copied, used or disclosed by or to any unauthorised person without the prior written consent of Brimelow McSwiney Architects.
 The areas on the drawing have been measured directly from a CAD drawing and have no tolerances added or subtracted.
 The areas have been calculated in accordance with the Code of Measuring Practice, 8th Edition (2007) using the stated offsets, N/A, G/A, G/E. They are approximate and liable to the final area of the building at the current state of the design. Any decisions to be made on the basis of these proportions, whether as to project viability, pre-letting, lease agreements and the like, should make allowance for the following:
 - Design development
 - Accurate site survey, site levels and dimensions need to be fully established
 - Allowance for construction methods and building tolerances
 - Local authority consent

rev.	date	drawn by	checked by	description
1	13.04.18	ZS	SH	Issued for Planning
A	28.08.18	ZS	SH	Issued for Planning
B	24.10.18	ZS	SH	Floor to Bile and Br Store revised. Issued for Planning



FOR PLANNING

BRIMELOW McSWINEY ARCHITECTS

28 Great Queen Street, Covent Garden, London WC2B 8BE
 Tel: 020 7731 7833 - email: admin@brimelow.com

Project: **Brewers Quay, Hope Square, Weymouth, DT4 8TR**

Title: **Proposed Fourth Floor Plan**

scale	date	drawn
1:200@A2	14.09.17	CD

drawing no: **1731-0405**

revision: **B**