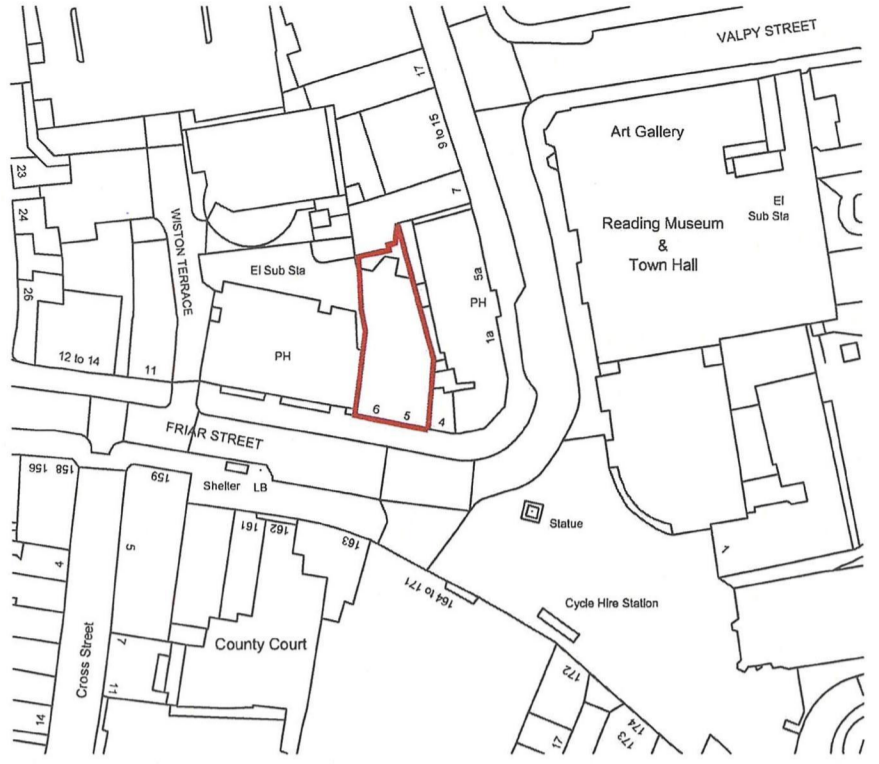


1 Proposed Ground Floor Plan  
Scale: 1:100 @ A3



2 Site Location Plan  
Scale: 1:1250 @ A3

| FIRE PRECAUTIONS LEGEND |  |
|-------------------------|--|
|                         | Maintained Exit sign to B.S.   |
|                         | Emergency lighting unit to be fitted with LED indicating healthy supply. The units are to incorporate battery back up for three hours                |
|                         | Non-maintained emergency lighting unit to be fitted with LED indicating healthy supply. The units are to incorporate battery back up for three hours |
|                         | Non-maintained Fire Exit sign  |
|                         | Heat or smoke detector   |
|                         | Heat or smoke detector together with integrated Fire Alarm sounder (of at least 75 dB(A) as well as an integrated visual beacon                      |
|                         | Fire Alarm sounder (of at least 75 dB(A) as well as an integrated visual beacon  |
|                         | Visual Beacon  |
|                         | Fire alarm push button   |
|                         | Fire alarm sounder   |
|                         | One hour fire resisting doors fitted with closer and intumescent smoke seals   |
|                         | Half hour fire door with intumescent strips, non-self closing  |
|                         | Half hour fire resisting doors fitted with closer and intumescent smoke seals  |
|                         | Push Bar   |
|                         | Water extinguisher   |
|                         | CO2 extinguisher   |
|                         | Fire Blanket   |
|                         | Foam Extinguisher  |
|                         | Dry Powder Extinguisher  |
|                         | Wet Chemical Extinguisher  |
|                         | Red line indicates areas for all licensable activities.  |



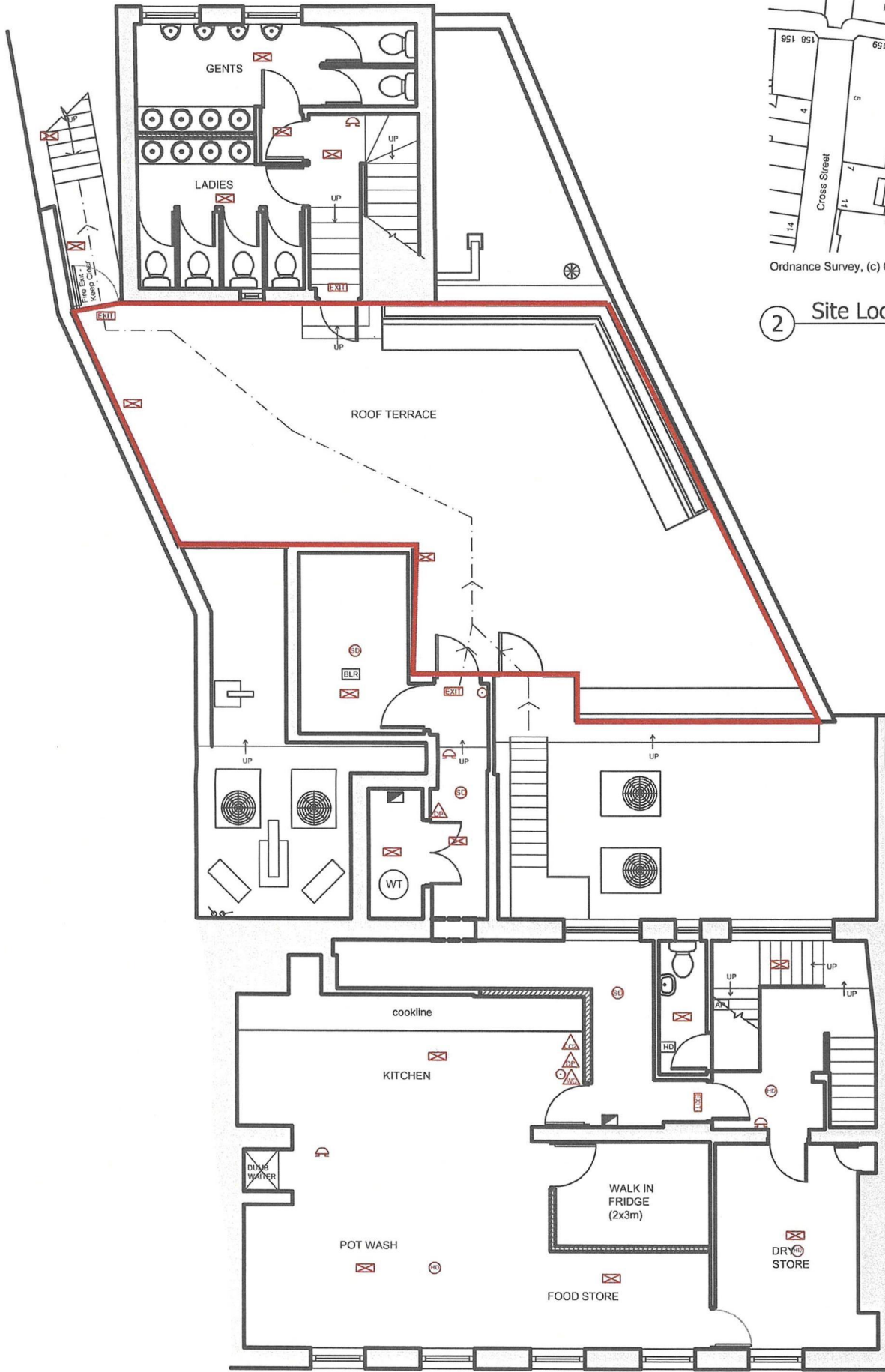
SCALE 1:100

| REVISIONS |      |         |       |
|-----------|------|---------|-------|
| Rev.      | Date | Details | Notes |
|           |      |         |       |
|           |      |         |       |

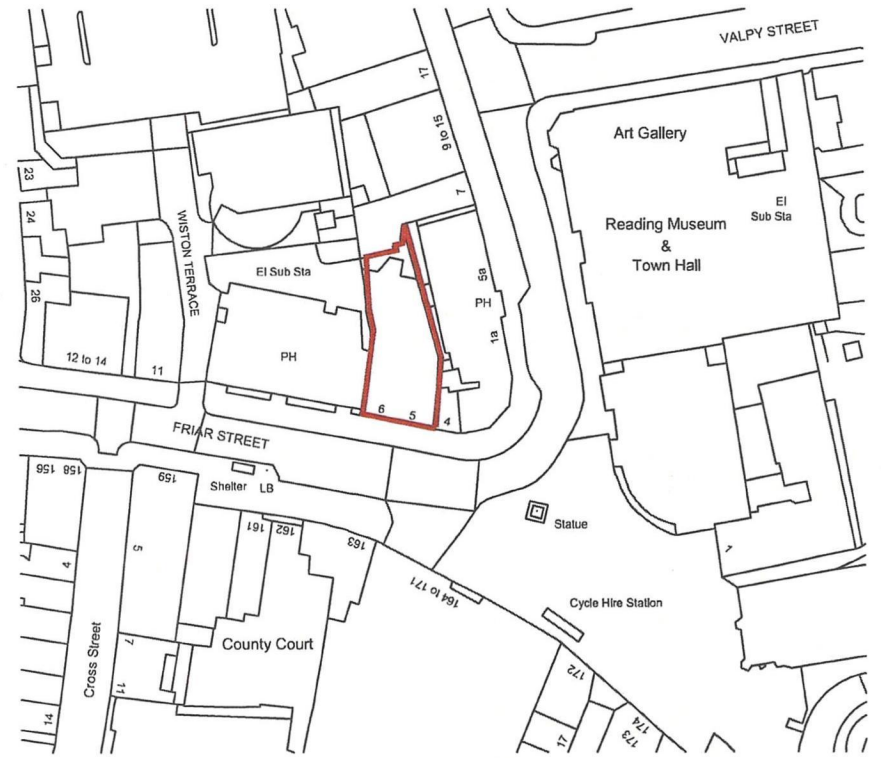
  

|                              |   |  |   |
|------------------------------|---|--|---|
| <b>design</b><br><i>i.d.</i> | <b>Greene Kling</b><br>Matchbox<br>5-6 Friar Street<br>Reading<br>RG1 1DB | Drawing Title<br><b>Proposed Ground Floor Licensing Plan</b> | Drawing No.<br><b>19.079.GK.G.1000</b>  |
|                              | Date<br><b>Oct 2019</b>   | Scale<br><b>1:100 @ A3</b>                                   | Made valid for the purposes of the Licensing Act 2003 by the issue of this plan on the date shown in the box above. |

13 Jubilee Way, Eurolink Business Centre, Faversham, Kent, ME13 8GD  
Tel: 01795 537886 Fax: 08712 516713 E-mail: mail@design-ld.uk



1 Proposed First Floor Plan  
Scale: 1:100 @ A3



Ordnance Survey, (c) Crown Copyright 2019. All rights reserved. Licence number 100022432

2 Site Location Plan  
Scale: 1:1250 @ A3

| FIRE PRECAUTIONS LEGEND |  |
|-------------------------|--|
|                         | Maintained Exit sign to B.S.   |
|                         | Emergency lighting unit to be fitted with LED indicating healthy supply. The units are to incorporate battery back up for three hours                |
|                         | Non-maintained emergency lighting unit to be fitted with LED indicating healthy supply. The units are to incorporate battery back up for three hours |
|                         | Non-maintained Fire Exit sign  |
|                         | Heat or smoke detector   |
|                         | Heat or smoke detector together with integrated Fire Alarm sander (of at least 75 dB(A) as well as an integrated visual beacon                       |
|                         | Fire Alarm sander (of at least 75 dB(A) as well as an integrated visual beacon   |
|                         | Visual Beacon  |
|                         | Fire alarm push button   |
|                         | Fire alarm sander  |
| FD80sc                  | One hour fire resisting doors fitted with closer and intumescent smoke seals   |
| FD30                    | Half hour fire door with intumescent strips, non-self closing  |
| FD30sc                  | Half hour fire resisting doors fitted with closer and intumescent smoke seals  |
| PB                      | Push Bar   |
|                         | Water extinguisher   |
|                         | CO2 extinguisher   |
|                         | Fire Blanket   |
|                         | Foam Extinguisher  |
|                         | Dry Powder Extinguisher  |
|                         | Wet Chemical Extinguisher  |
|                         | Red line indicates areas for all licensable activities.  |



SCALE 1:100

| REVISIONS |      |         |      |
|-----------|------|---------|------|
| Rev.      | Date | Details | Name |
|           |      |         |      |
|           |      |         |      |

|   |   |                                       |
|---|---|---------------------------------------|
| Client<br><b>Greene King</b>                                | Drawing Title<br><b>Proposed First Floor Licensing Plan</b> | Drawing No.<br><b>19.079.GKG.1001</b> |
| Project<br><b>Matchbox 5-6 Friar Street Reading RG1 1DB</b> | Scale<br><b>1:100 @ A3</b>                                  | Drawn By<br><b>[Signature]</b>        |
| Design<br><b>i.d.</b>                                       | Drawn By<br><b>[Signature]</b>                              | Date<br><b>Oct 2019</b>               |

13 Jubilee Way, Eurolink Business Centre, Faversham, Kent, ME13 8GD  
Tel: 01795 537896 Fax: 08712 516713 E-mail: mail@design-ld.uk