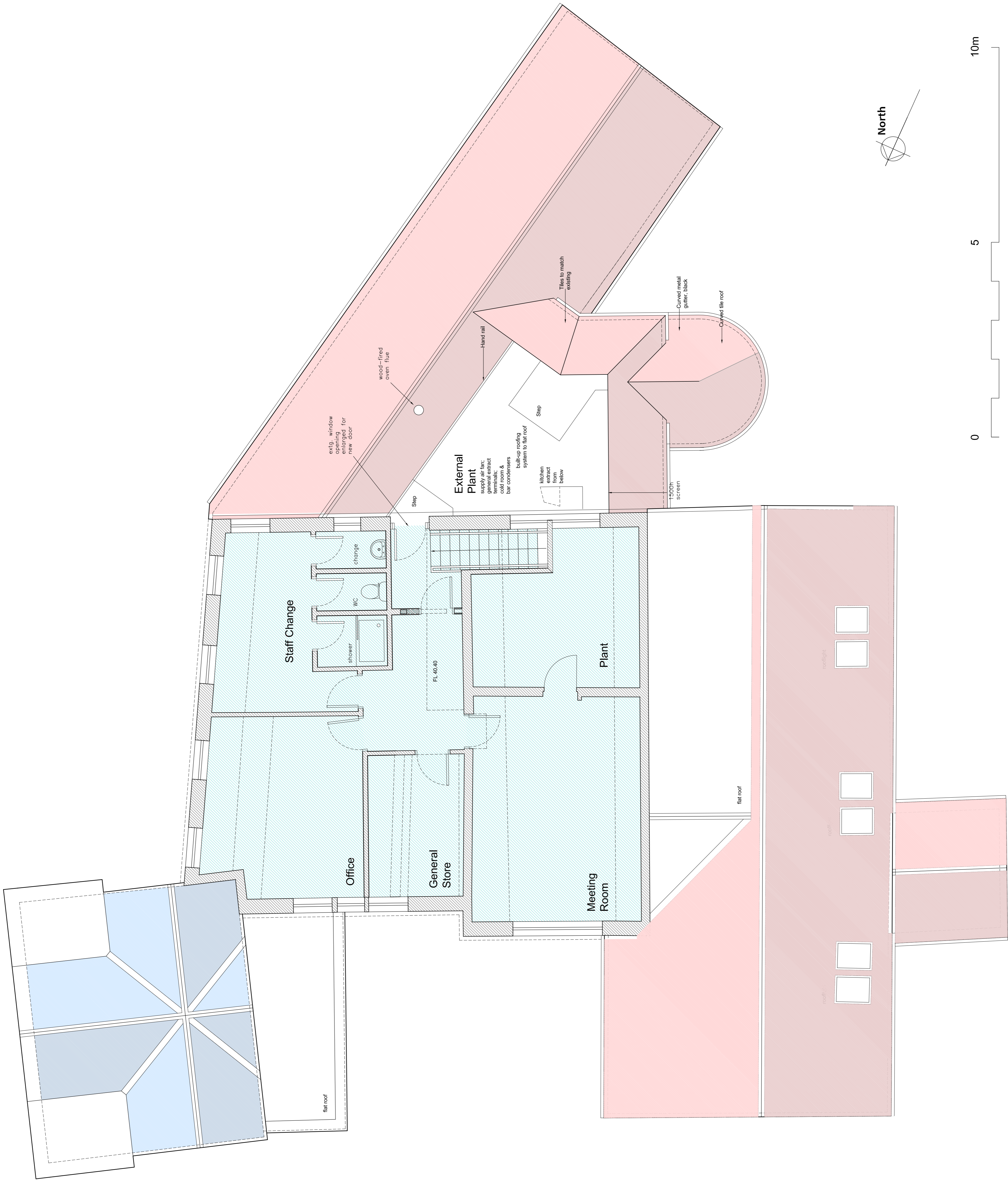


NOTES:

Adjacent properties and boundaries are shown for illustrative purposes only and have not been surveyed unless otherwise stated.



REV	DATE	DESCRIPTION	DRAWN	CHECKED
C	27/11/2012	General amendments	PD	MW
B	23/11/2012	General amendments	PD	MW
A	01/11/2012	General amendments	PD	MW

PLANNING

CFW
Architects Design & Build

**Chaplin Farrant
Wiltsire Limited**
Bank Chambers
Abbey Mill
Winchester
Hampshire
SO23 3DA
Tel: 01962 862334
Fax: 01962 860506
email: studio@cfw-architects.com
www.cfw-architects.com

Also at:
Newnham
London

Winchester City Council
Abbey Mill
Proposed
First Floor
J11763W
Sk F11
01/11/2012
1:50@A1
PD
MWB

This drawing is copyright of the Architects and shall not be reproduced without their permission.
Check all dimensions and report any errors or omissions.