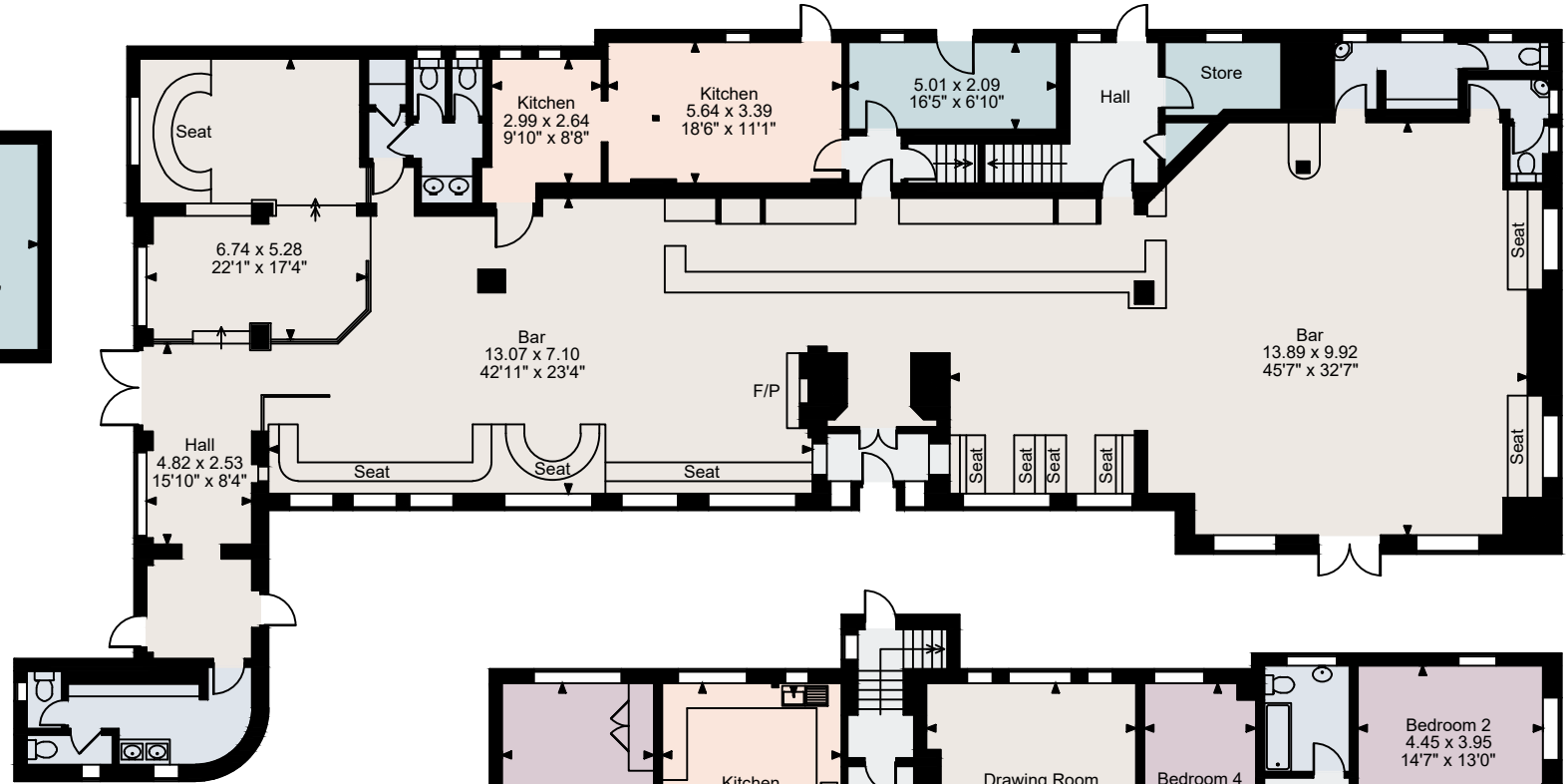
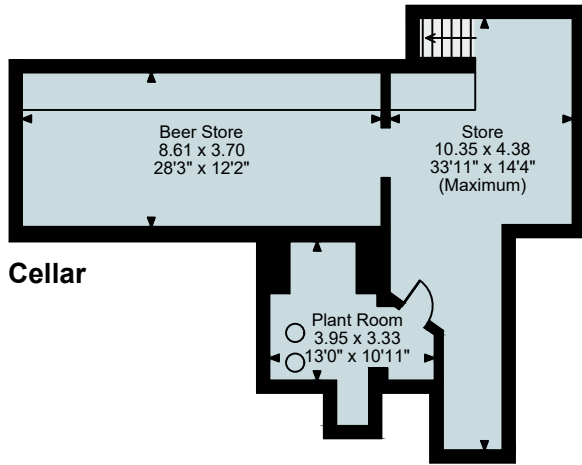
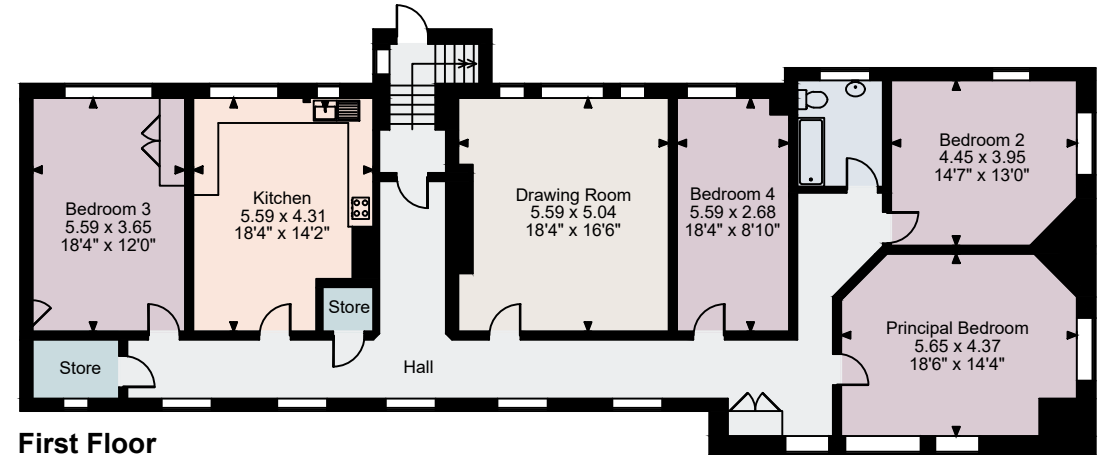


43 Court Lane, Portsmouth

Cellar gross internal area = 824 sq ft / 77 sq m
Ground Floor gross internal area = 4,188 sq ft / 389 sq m
First Floor gross internal area = 2,072 sq ft / 192 sq m
Total gross internal area = 7,084 sq ft / 658 sq m



Ground Floor



First Floor

FOR ILLUSTRATIVE PURPOSES ONLY - NOT TO SCALE

The position & size of doors, windows, appliances and other features are approximate only.

© ehouse. Unauthorised reproduction prohibited. Drawing ref. dig/8582621/JPN