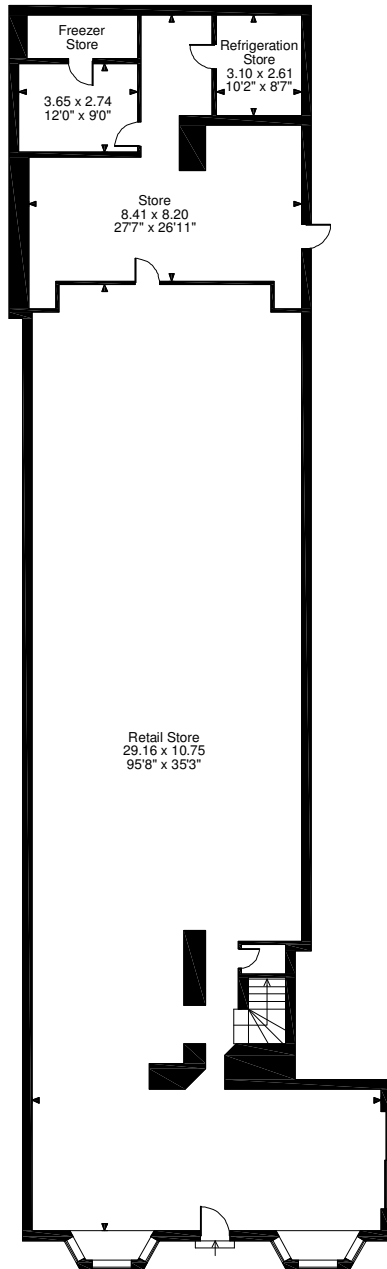
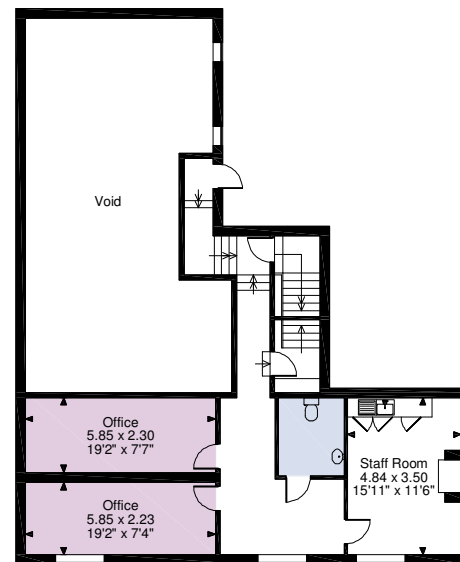


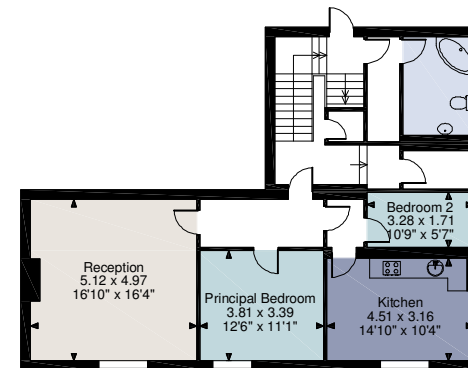
Tesco Express, Market Place, Bedale
Ground Floor gross internal area = 3,457 sq ft / 321 sq m
First Floor gross internal area = 1,593 sq ft / 148 sq m
Mid Floor gross internal area = 129 sq ft / 12 sq m
Second Floor gross internal area = 1,057 sq ft / 98 sq m
Total gross internal area = 6,236 sq ft / 579 sq m



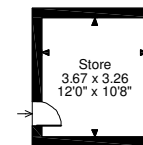
Ground Floor



First Floor



Second Floor



**Mid Floor
Between 1st and 2nd Floors**

FOR ILLUSTRATIVE PURPOSES ONLY - NOT TO SCALE

The position & size of doors, windows, appliances and other features are approximate only.

© ehouse. Unauthorised reproduction prohibited. Drawing ref. dig/8483923/SMA