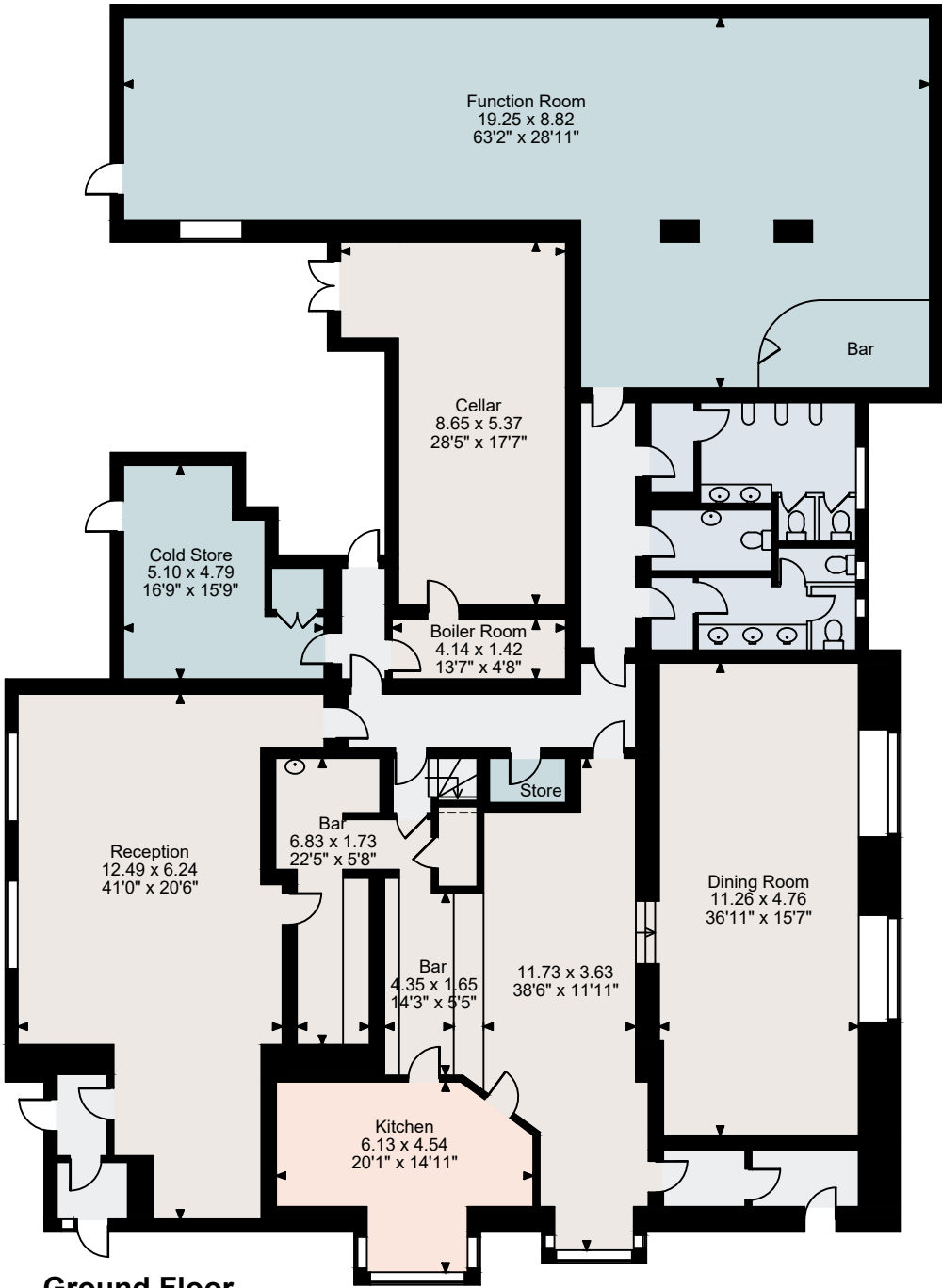
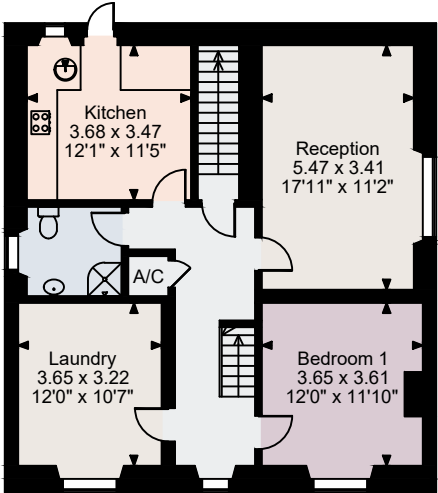


Portobello Inn, Worcester

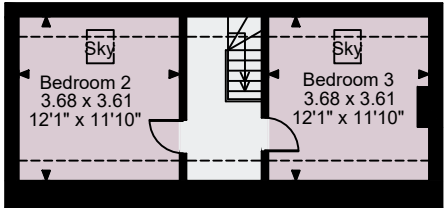
Ground Floor gross internal area = 5,406 sq ft / 502 sq m
First Floor gross internal area = 918 sq ft / 85 sq m
Second Floor gross internal area = 262 sq ft / 24 sq m
Total gross internal area = 6,586 sq ft / 612 sq m



Ground Floor



First Floor



Second Floor

FOR ILLUSTRATIVE PURPOSES ONLY - NOT TO SCALE

The position & size of doors, windows, appliances and other features are approximate only.

□ □ □ □ Denotes restricted head height

© ehouse. Unauthorised reproduction prohibited. Drawing ref. dig/8681497/MLL