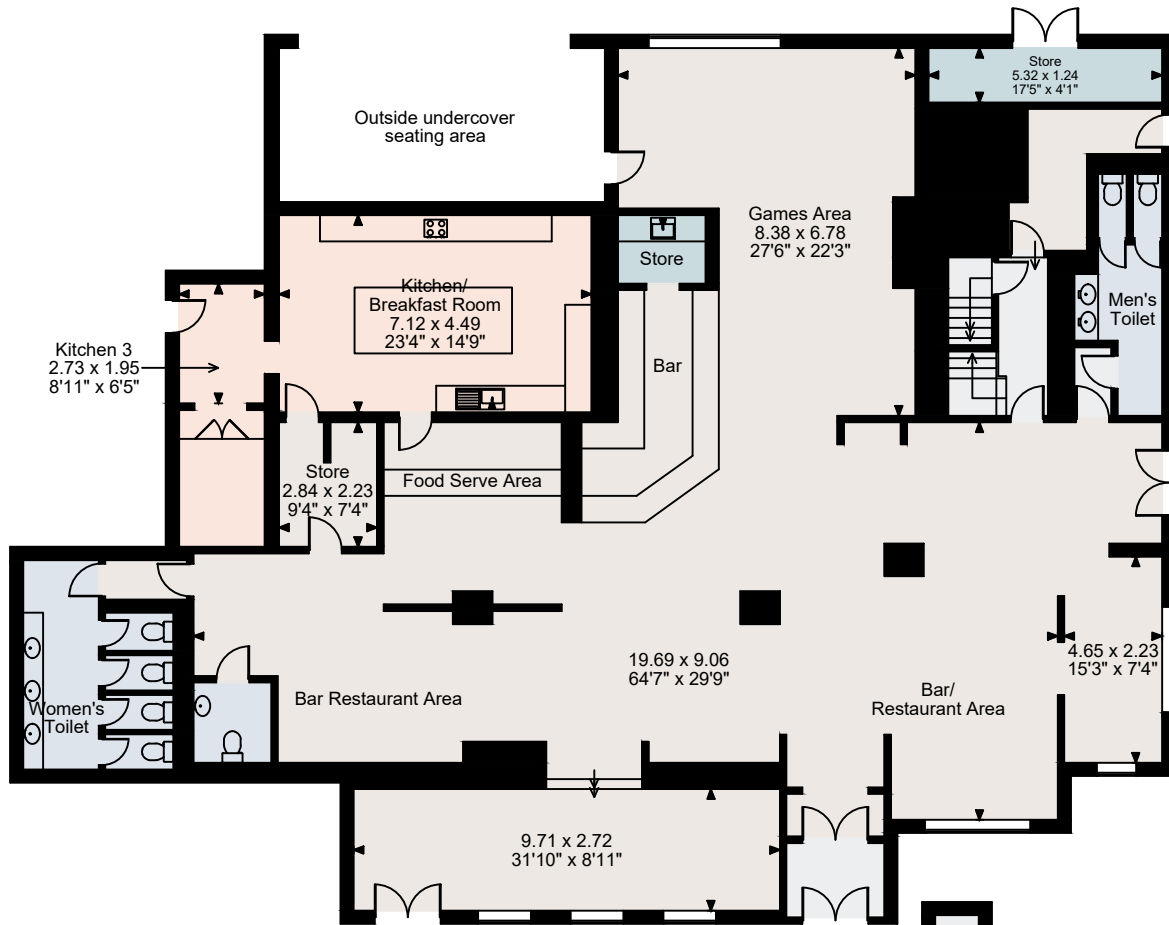
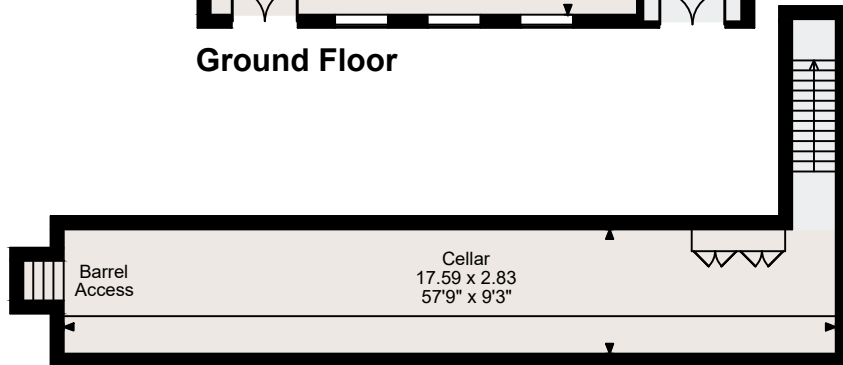


Loom & Shuttle, Kidderminster

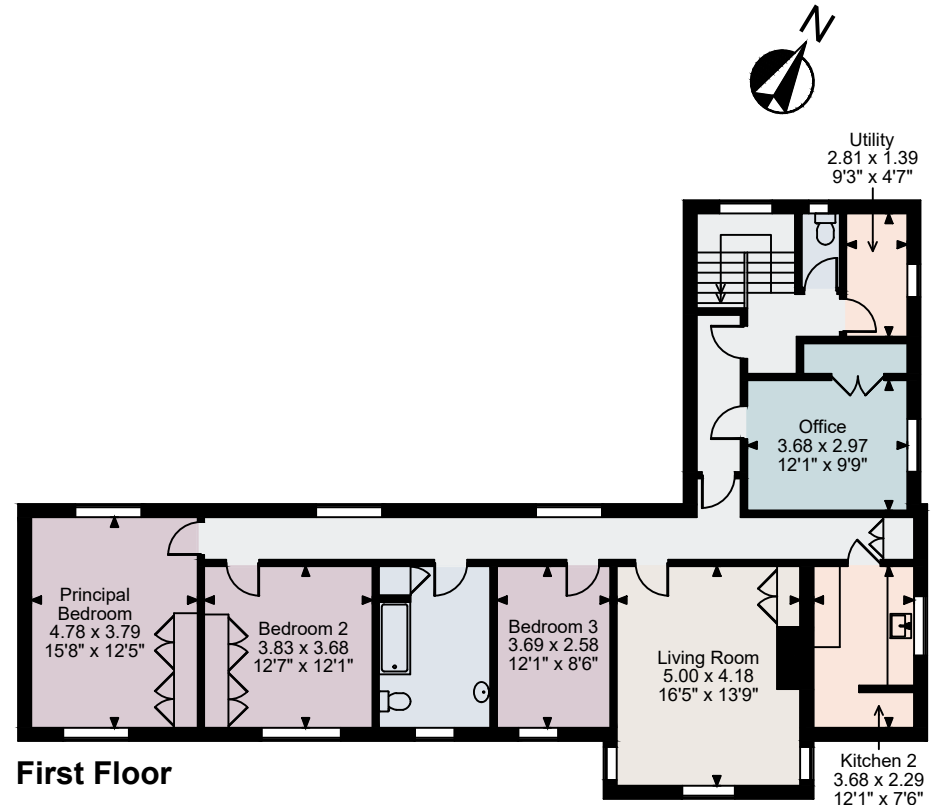
Cellar gross internal area = 566 sq ft / 53 sq m
 Ground Floor gross internal area = 4,159 sq ft / 386 sq m
 First Floor gross internal area = 1,456 sq ft / 135 sq m
 Total gross internal area = 6,181 sq ft / 574 sq m
 Quoted Area Excludes 'External Outside undercover seating area'



Ground Floor



Cellar



First Floor

FOR ILLUSTRATIVE PURPOSES ONLY - NOT TO SCALE

The position & size of doors, windows, appliances and other features are approximate only.

© ehouse. Unauthorised reproduction prohibited. Drawing ref. dig/8681494/KRA