

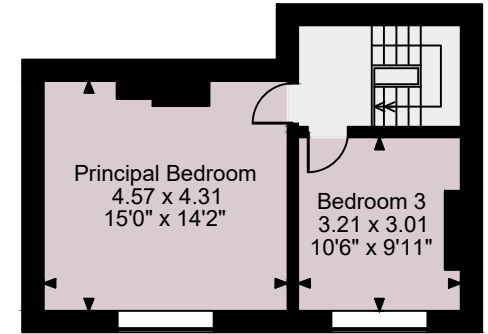
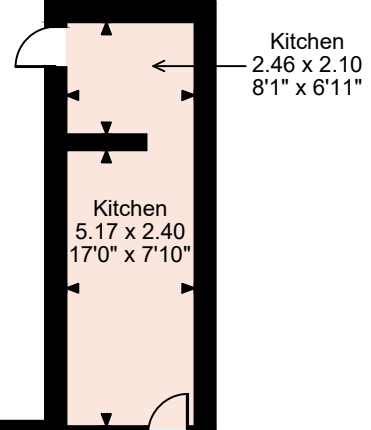
# Wheatsheaf Inn, Stourport-on-Severn

Cellar gross internal area = 269 sq ft / 25 sq m

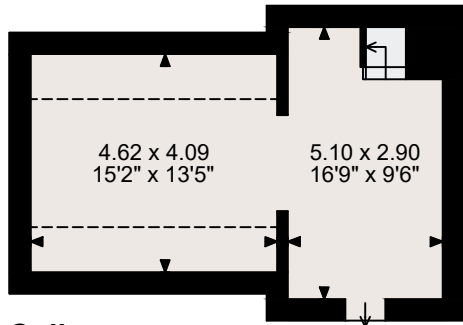
Ground Floor gross internal area = 1,846 sq ft / 172 sq m

First Floor gross internal area = 744 sq ft / 69 sq m

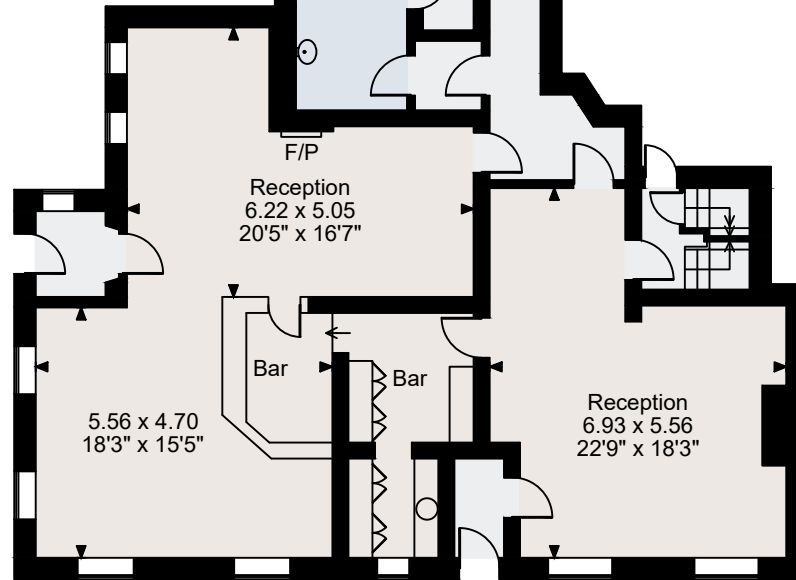
Second Floor gross internal area = 388 sq ft / 36 sq m



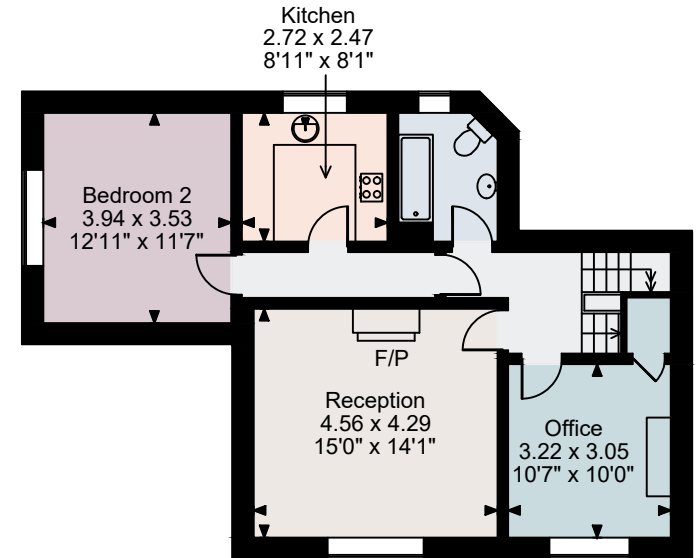
**Second Floor**



**Cellar**



**Ground Floor**



**First Floor**

**FOR ILLUSTRATIVE PURPOSES ONLY - NOT TO SCALE**

The position & size of doors, windows, appliances and other features are approximate only.

☐☐☐☐ Denotes restricted head height

© ehouse. Unauthorised reproduction prohibited. Drawing ref. dig/8545037/MLL