

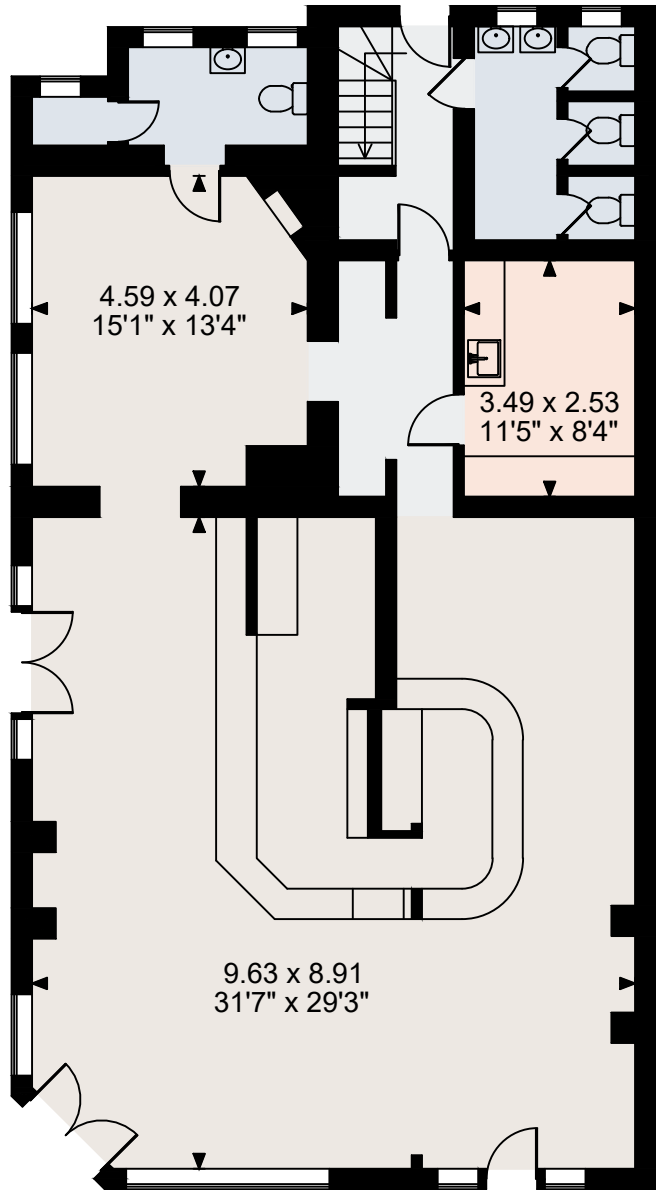
Grosvenor Arms, Garratt Lane, SW18

Ground Floor gross internal area = 1,585 sq ft / 147 sq m

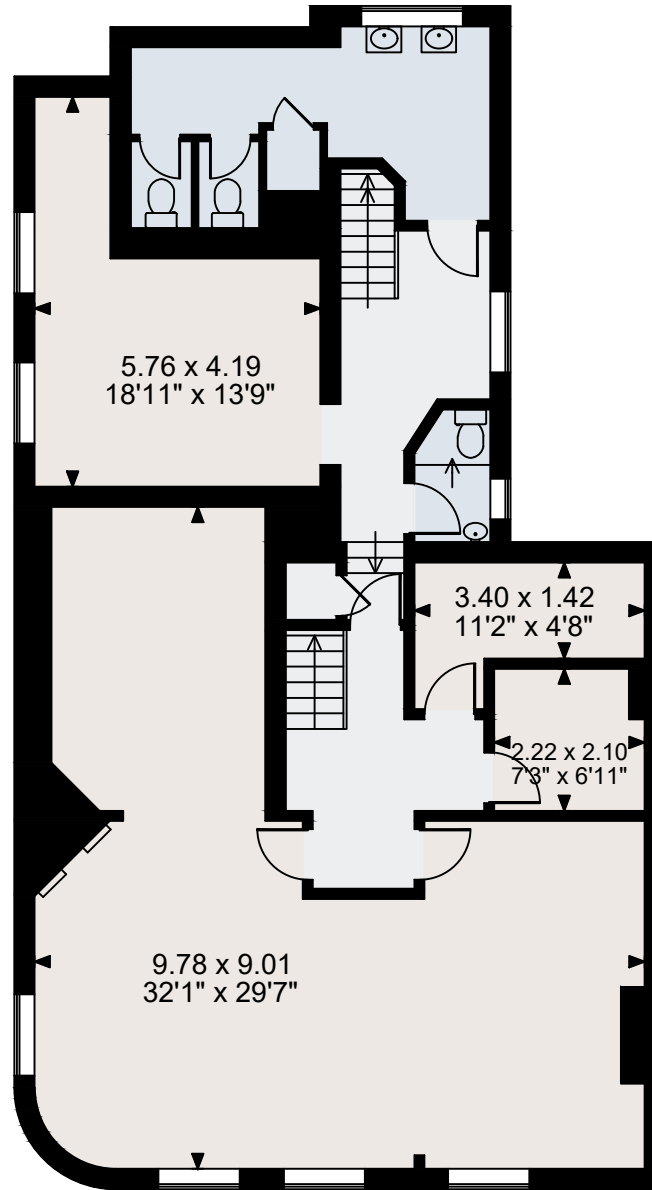
First Floor gross internal area = 1,397 sq ft / 130 sq m

Second Floor gross internal area = 839 sq ft / 78 sq m

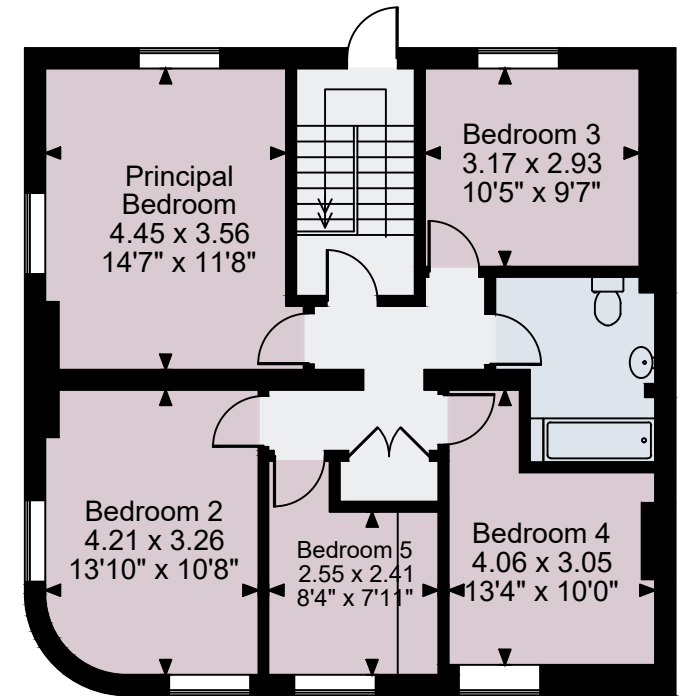
Total gross internal area = 3,821 sq ft / 355 sq m



Ground Floor



First Floor



Second Floor

FOR ILLUSTRATIVE PURPOSES ONLY - NOT TO SCALE

The position & size of doors, windows, appliances and other features are approximate only.

© ehouse. Unauthorised reproduction prohibited. Drawing ref. dig/8662658/ZKB