

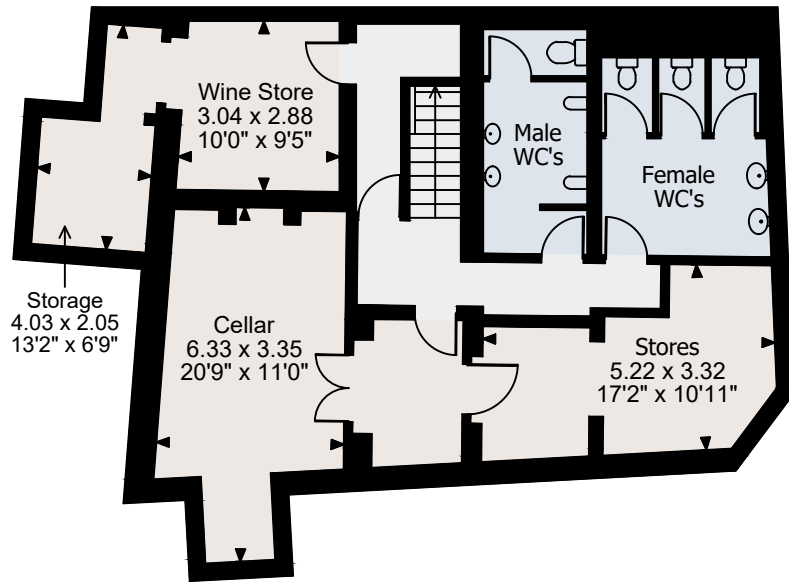
Grove Lane, SE5

Basement gross internal area = 979 sq ft / 91 sq m

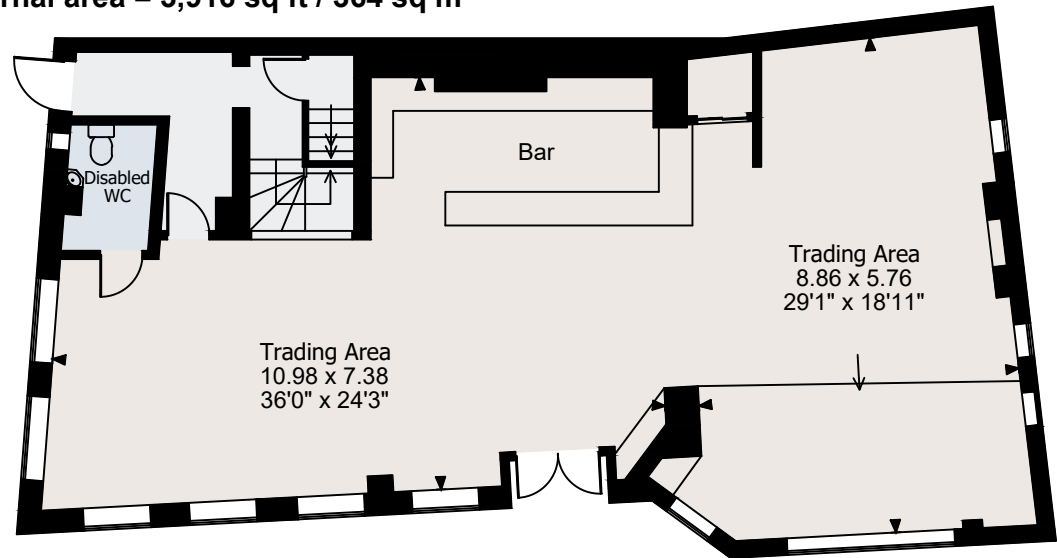
Ground Floor gross internal area = 1,454 sq ft / 135 sq m

First Floor gross internal area = 1,483 sq ft / 138 sq m

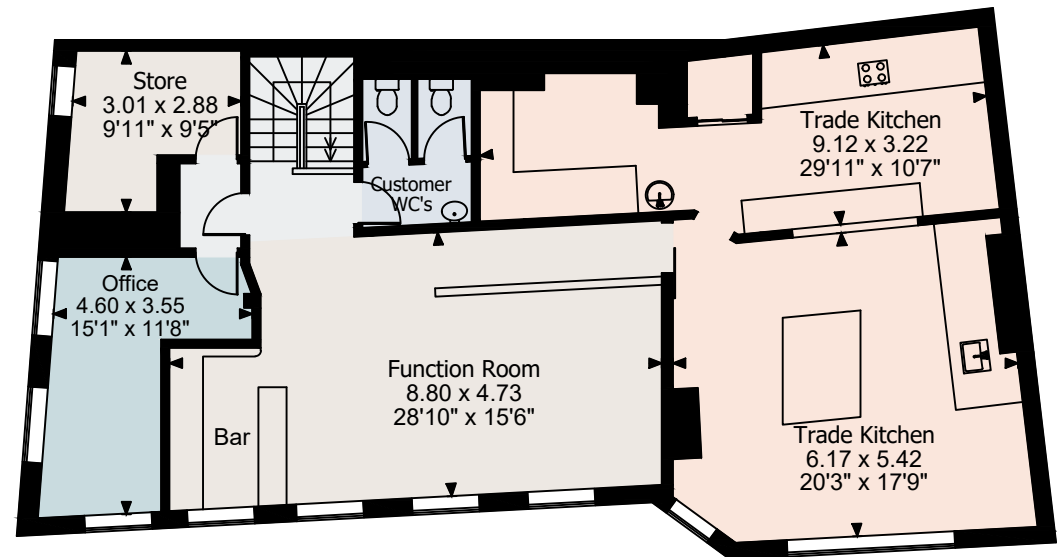
Total gross internal area = 3,916 sq ft / 364 sq m



Basement



Ground Floor



First Floor

FOR ILLUSTRATIVE PURPOSES ONLY - NOT TO SCALE

The position & size of doors, windows, appliances and other features are approximate only.

© ehouse. Unauthorised reproduction prohibited. Drawing ref. dig/8677686/ZKB