

Swan Hotel, High Street, Hythe

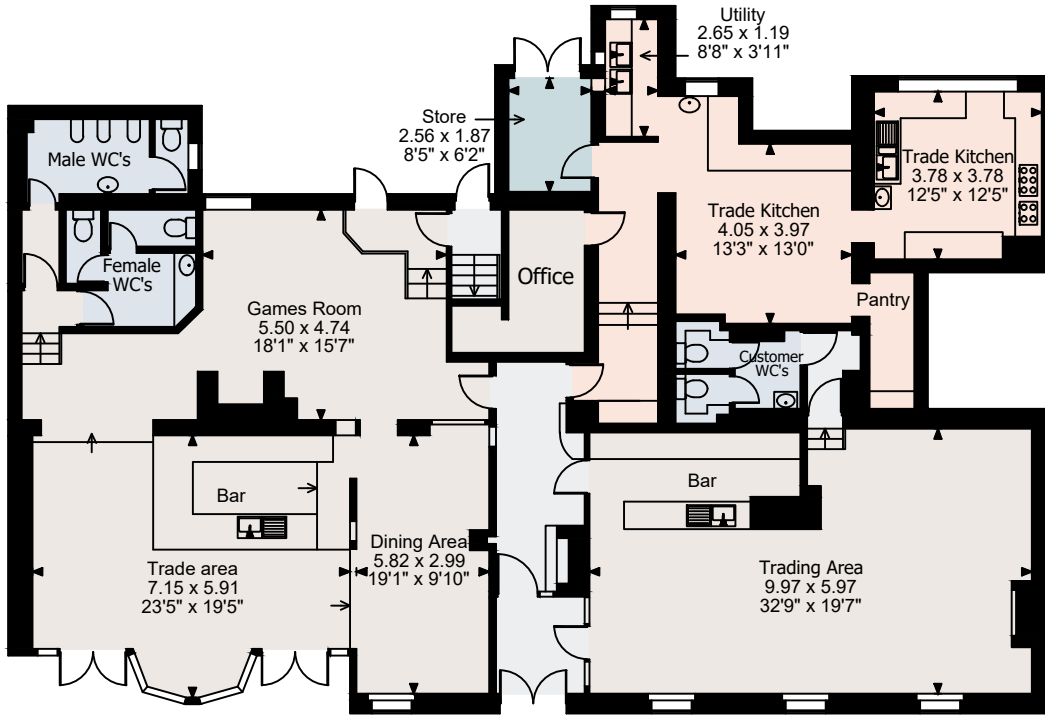
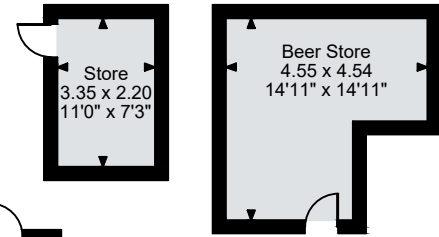
Ground Floor gross internal area = 2,908 sq ft / 270 sq m

First Floor gross internal area = 3,080 sq ft / 286 sq m

Second Floor gross internal area = 1,055 sq ft / 98 sq m

Store and Beer Store gross internal area = 261 sq ft / 24 sq m

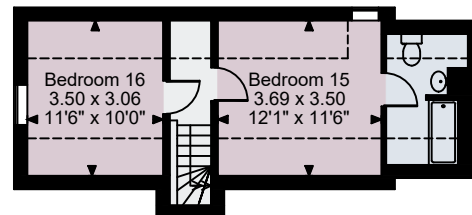
Total gross internal area = 7,304 sq ft / 679 sq m



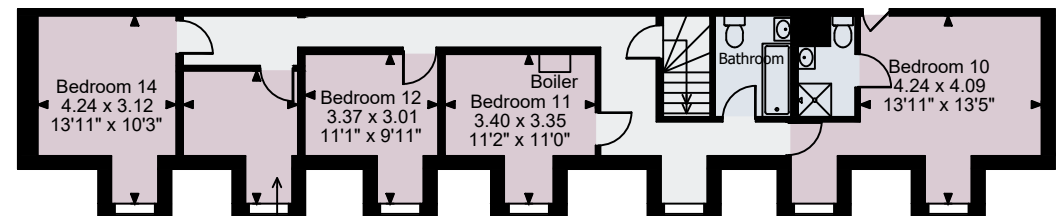
Ground Floor



First Floor



Second Floor



Second Floor

FOR ILLUSTRATIVE PURPOSES ONLY - NOT TO SCALE

The position & size of doors, windows, appliances and other features are approximate only.

□□□□ Denotes restricted head height

© ehouse. Unauthorised reproduction prohibited. Drawing ref. dig/8669079/SAP