

# Bridge Arms, Canterbury

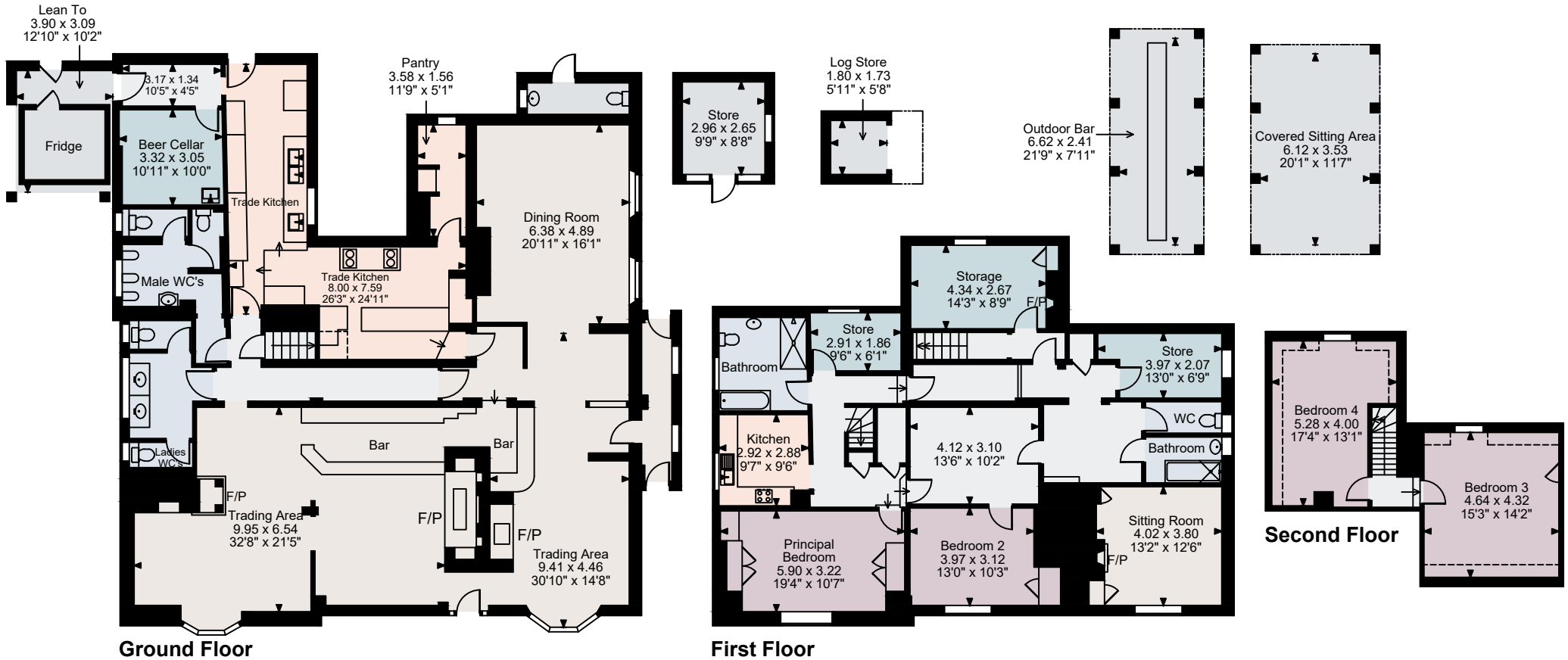
Ground Floor gross internal area = 2,738 sq ft / 254 sq m

First Floor gross internal area = 1,694 sq ft / 157 sq m

Second Floor gross internal area = 387 sq ft / 36 sq m

Outbuildings gross internal area = 153 sq ft / 14 sq m

Total gross internal area = 4,972 sq ft / 462 sq m



**FOR ILLUSTRATIVE PURPOSES ONLY - NOT TO SCALE**

The position & size of doors, windows, appliances and other features are approximate only.

□ □ □ □ Denotes restricted head height

© ehouse. Unauthorised reproduction prohibited. Drawing ref. dig/8669060/SAP