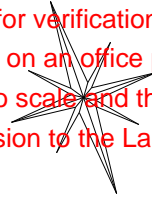


The Griffin, 12 The Broadway, Old Amersham
Buckinghamshire HP7 0HP

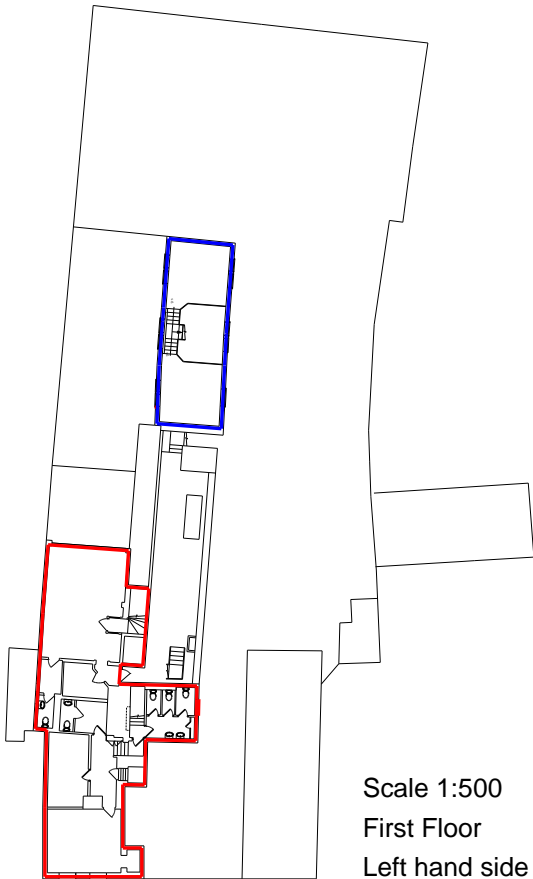
Ground Floor Gross Internal Area = 4742.6 sq ft / 440.6 sq m
First Floor Gross Internal Area = 3529.5 sq ft / 327.9 sq m
Second Floor Gross Internal Area = 1308.9 sq ft / 121.6 sq m
Third Floor Gross Internal Area = 1055.9 sq ft / 98.1 sq m
Total Gross Internal Area = 10636.9 sq ft / 988.2 sq m

PROOF

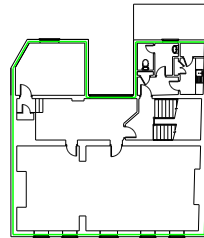
This proof is intended solely for verification of its content.
If printed at the incorrect size on an office printer the plan
will not be accurate to scale and therefore, NOT
suitable for submission to the Land Registry.



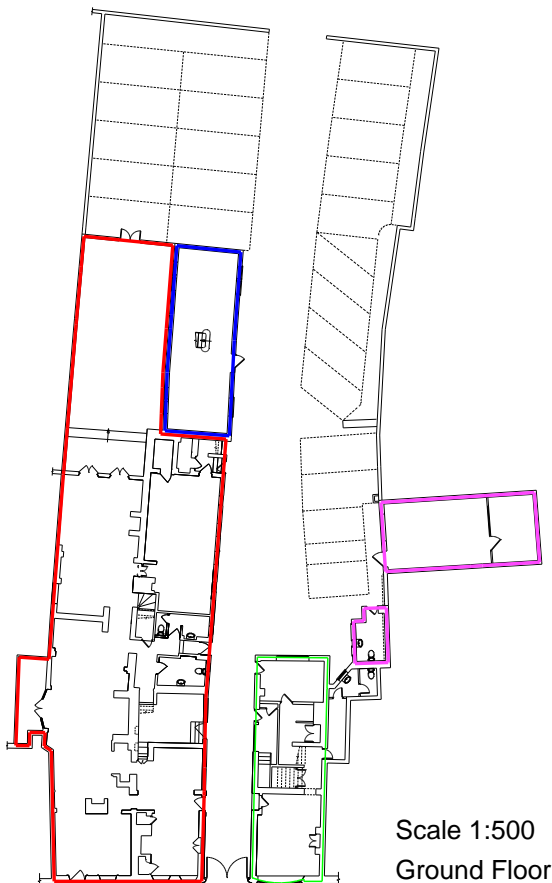
Please advise Wrightmans Plans Ltd. of your approval of the plan
or any amendments that may be required and compliant true scale
hard copies will be despatched immediately.



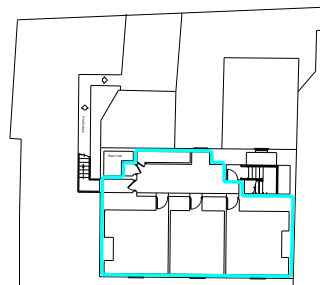
Scale 1:500
First Floor
Left hand side



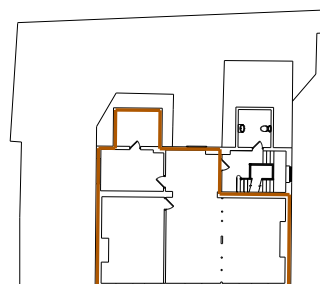
Scale 1:500
First Floor
Right hand side



Scale 1:500
Ground Floor



Scale 1:500
Third Floor



Scale 1:500
Second Floor