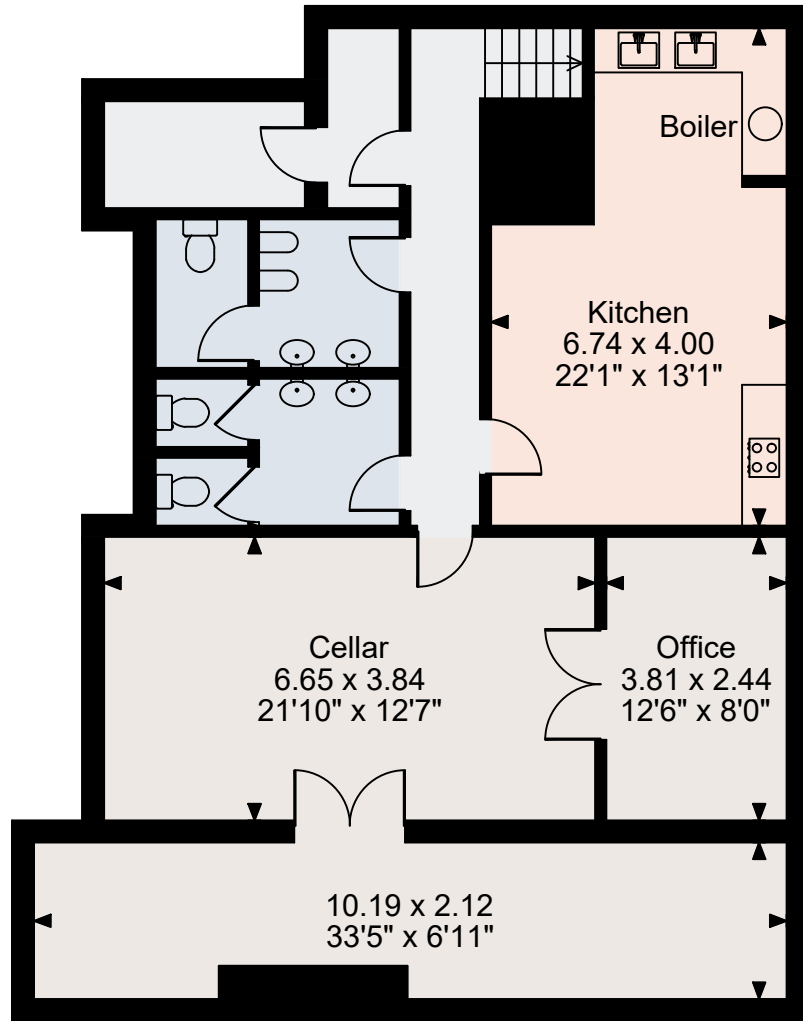
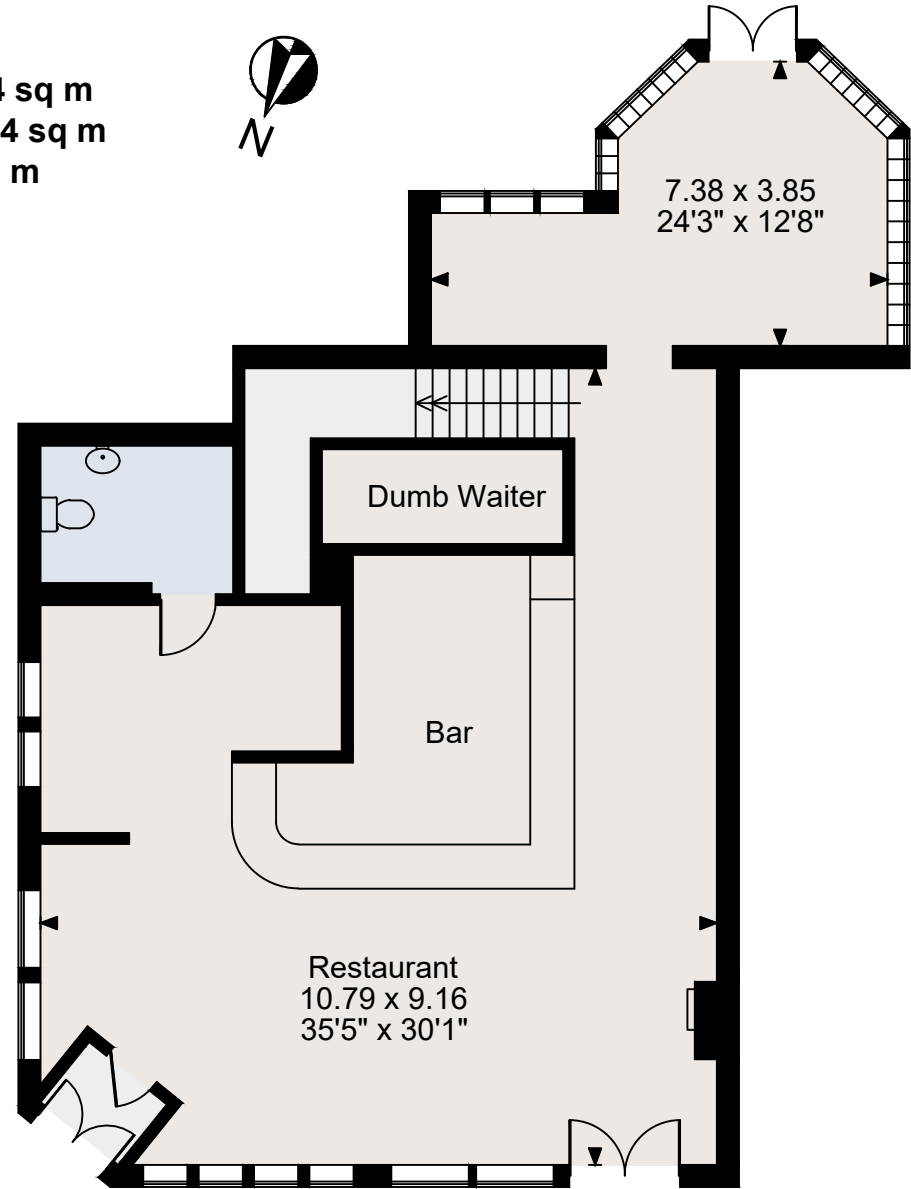


Princess Road, NW1

Main House gross internal area = 1,229 sq ft / 114 sq m
Ground Floor gross internal area = 1,228 sq ft / 114 sq m
Total gross internal area = 2,457 sq ft / 228 sq m



Lower Ground Floor



Ground Floor

FOR ILLUSTRATIVE PURPOSES ONLY - NOT TO SCALE

The position & size of doors, windows, appliances and other features are approximate only.

© ehouse. Unauthorised reproduction prohibited. Drawing ref. dig/8663133/KKM