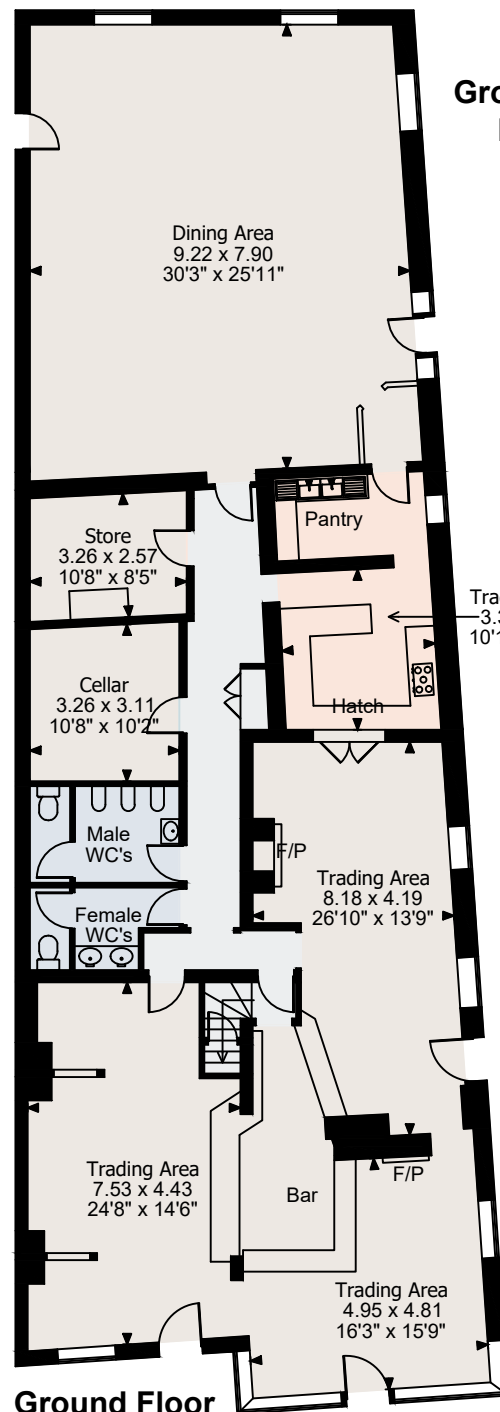


# 50, Bexley Street, Windsor

Ground Floor gross internal area = 2,561 sq ft / 238 sq m

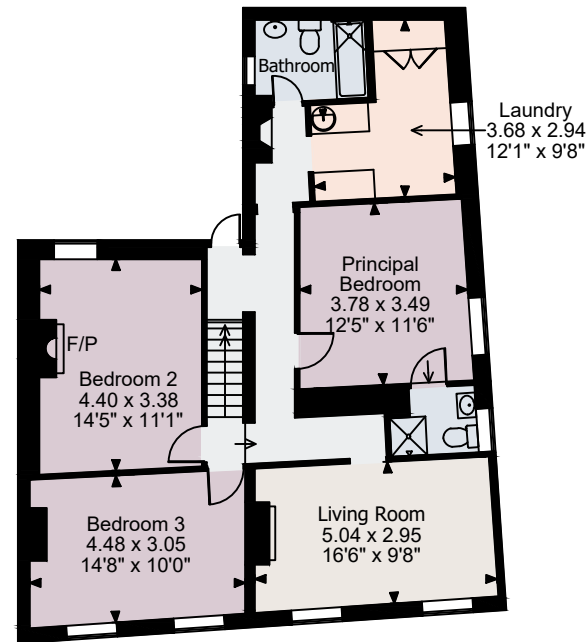
First Floor gross internal area = 952 sq ft / 88 sq m

Total gross internal area = 3,513 sq ft / 326 sq m



Ground Floor

Trade Kitchen  
3.34 x 3.19  
10'11" x 10'6"



First Floor

**FOR ILLUSTRATIVE PURPOSES ONLY - NOT TO SCALE**

The position & size of doors, windows, appliances and other features are approximate only.

© ehouse. Unauthorised reproduction prohibited. Drawing ref. dig/8685169/NJD