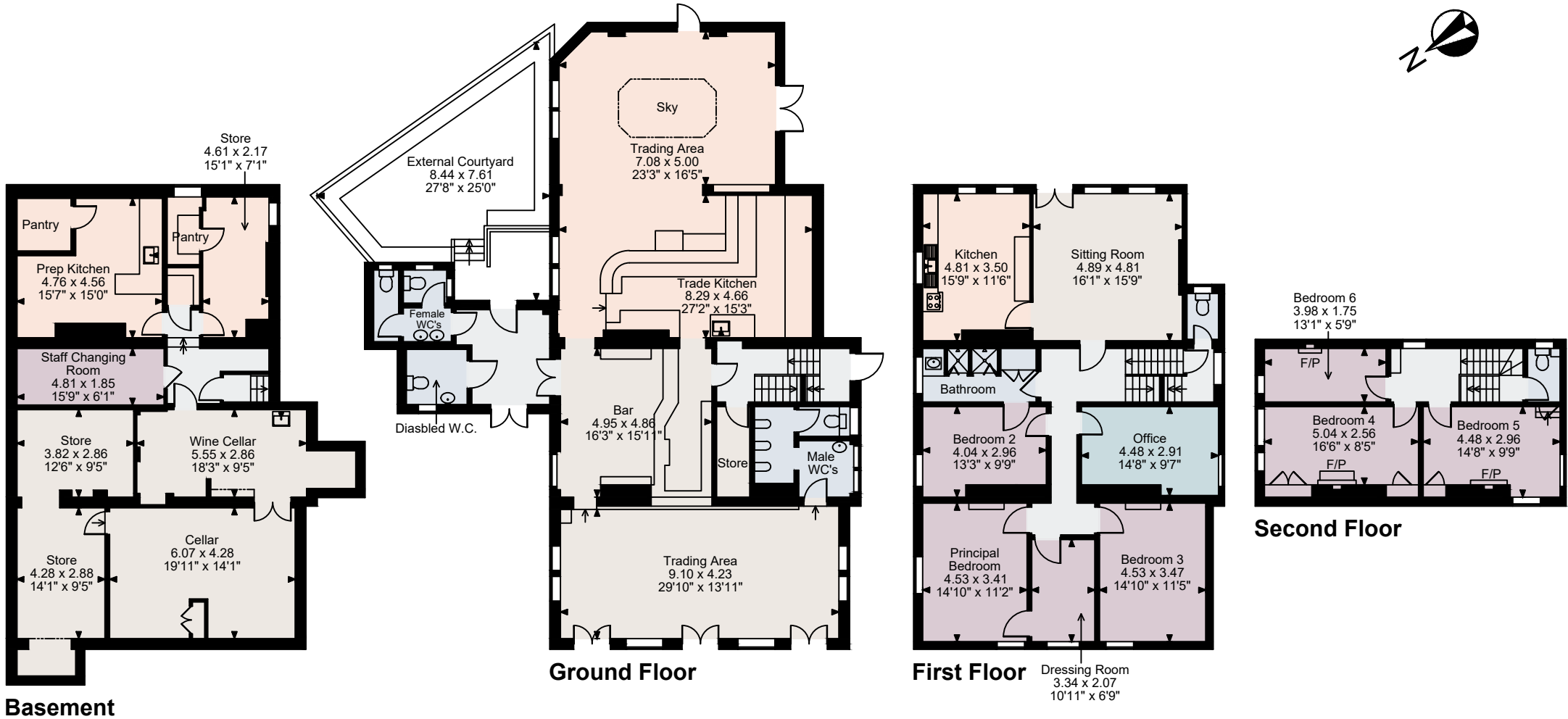


## Dartmouth Arms, SE23

Basement gross internal area = 1,378 sq ft / 128 sq m  
 Ground Floor gross internal area = 2,015 sq ft / 187 sq m  
 First Floor gross internal area = 1,458 sq ft / 135 sq m  
 Second Floor gross internal area = 494 sq ft / 46 sq m  
 Total gross internal area = 5,345 sq ft / 497 sq m



**FOR ILLUSTRATIVE PURPOSES ONLY - NOT TO SCALE**

The position & size of doors, windows, appliances and other features are approximate only.

© ehouse. Unauthorised reproduction prohibited. Drawing ref. dig/8658015/TOW