

**Bird In Hand, Gravel Road, Bromley**

**Ground Floor gross internal area = 1,947 sq ft / 181 sq m**

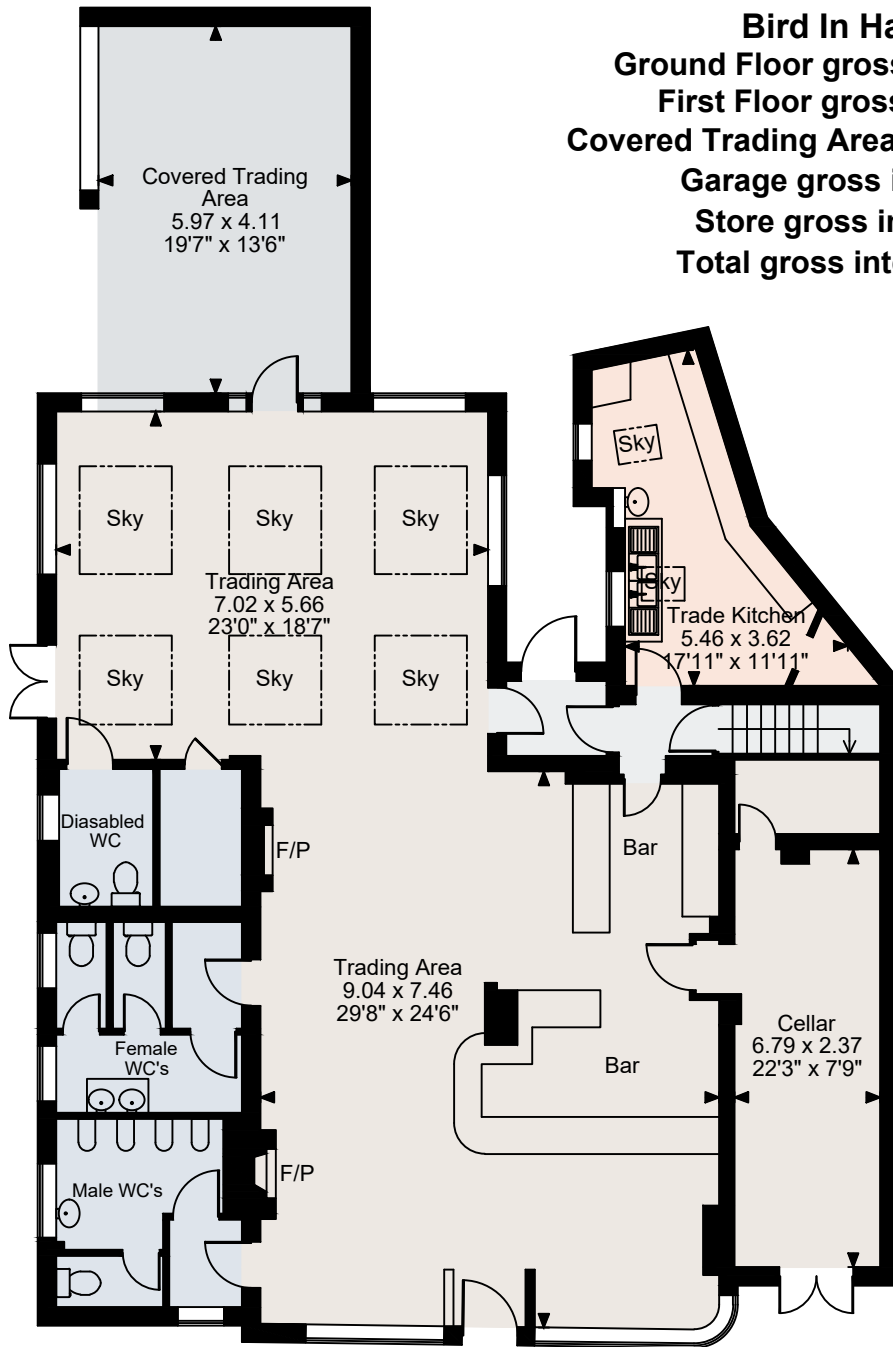
**First Floor gross internal area = 798 sq ft / 74 sq m**

**Covered Trading Area gross internal area = 264 sq ft / 25 sq m**

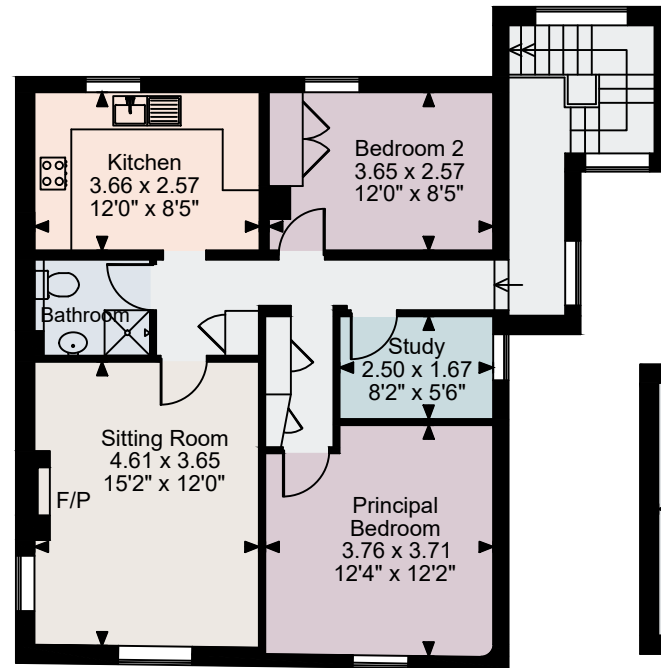
**Garage gross internal area = 162 sq ft / 15 sq m**

**Store gross internal area = 249 sq ft / 23 sq m**

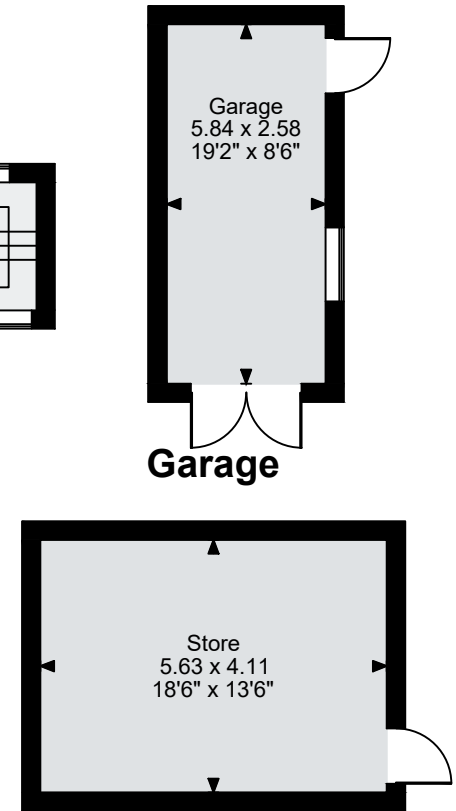
**Total gross internal area = 3,420 sq ft / 318 sq m**



**Ground Floor**



**First Floor**



**Store**

**FOR ILLUSTRATIVE PURPOSES ONLY - NOT TO SCALE**

The position & size of doors, windows, appliances and other features are approximate only.

© ehouse. Unauthorised reproduction prohibited. Drawing ref. dig/8635671/SS