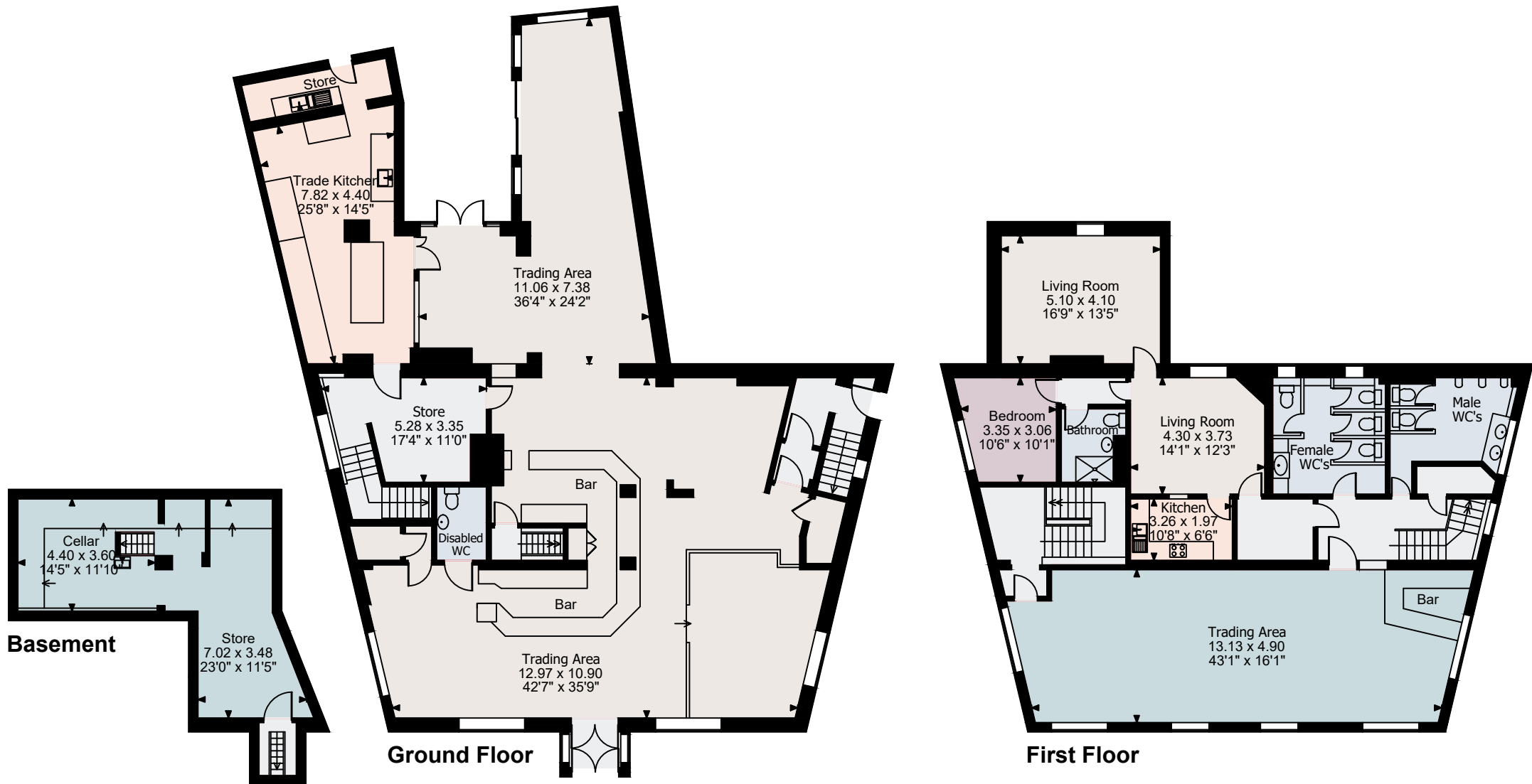


# Staple Hill Road, Bristol

Basement gross internal area = 451 sq ft / 42 sq m  
Ground Floor gross internal area = 2,872 sq ft / 267 sq m  
First Floor gross internal area = 2,091 sq ft / 194 sq m  
Total gross internal area = 5,414 sq ft / 503 sq m



**FOR ILLUSTRATIVE PURPOSES ONLY - NOT TO SCALE**

The position & size of doors, windows, appliances and other features are approximate only.

© ehouse. Unauthorised reproduction prohibited. Drawing ref. dig/8635672/DMS