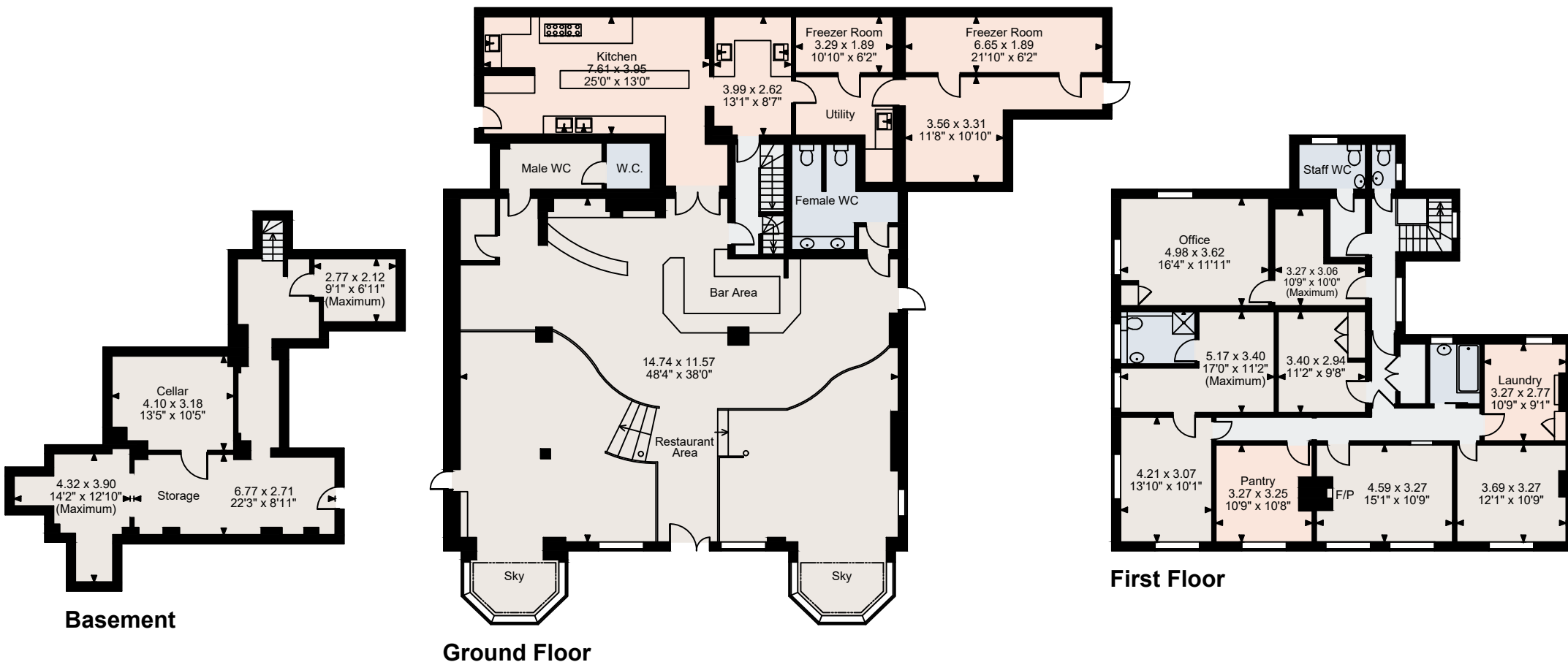


Ark, South Woodford

Basement gross internal area = 669 sq ft / 62 sq m
Ground Floor gross internal area = 3,201 sq ft / 297 sq m
First Floor gross internal area = 1,652 sq ft / 153 sq m
Total gross internal area = 5,522 sq ft / 513 sq m



FOR ILLUSTRATIVE PURPOSES ONLY - NOT TO SCALE

The position & size of doors, windows, appliances and other features are approximate only.

© ehouse. Unauthorised reproduction prohibited. Drawing ref. dig/8593222/TML