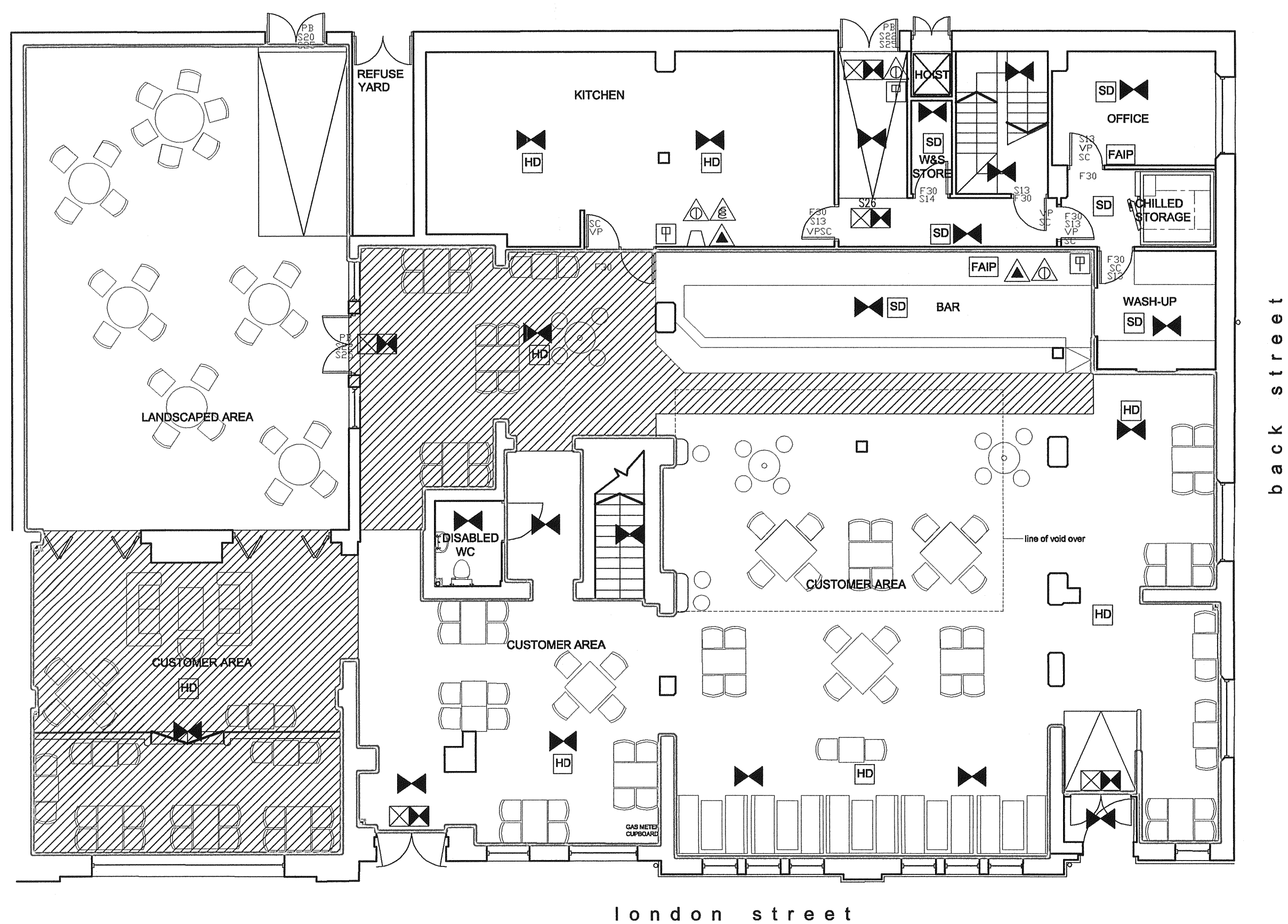


Do not scale off this drawing. All dimensions to be checked on site prior to manufacture and construction. This drawing is the property of Harrison Ince Partnership and should not be reproduced without permission. All discrepancies to be brought to the attention of the architect immediately. This drawing to be read in conjunction with the specification / bill of quantities and related drawings.

REVISIONS



GROUND FLOOR PLAN

FIRE AUTHORITY REQUIREMENTS

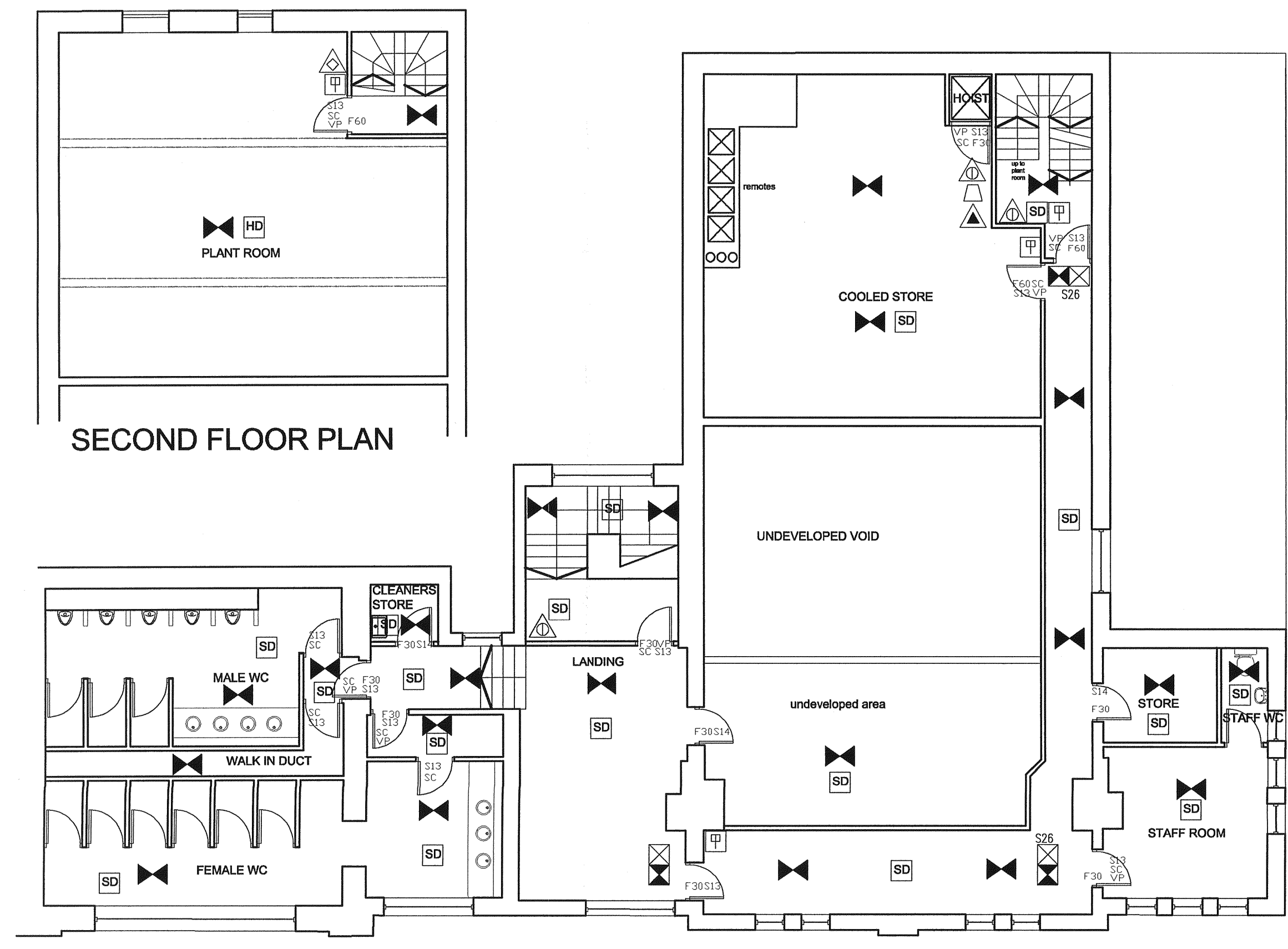
- F30 HALF HOUR FIRE RESISTANT WITH SMOKE SEALS & INTUMESCENT STRIPS
- F60 ONE HOUR FIRE RESISTANT WITH SMOKE SEALS & INTUMESCENT STRIPS
- VP VISION PANEL
- PB PANIC BOLT
- SC SELF-CLOSING
- SCA SELF-CLOSING AUTOMATIC RELEASE
- FL FUSIBLE LINK
- DS DOOR SELECTOR
- ILLUMINATED SUSPENDED "FIRE EXIT" SIGN 75mm LETTERS
- S13 "FIRE DOOR KEEP SHUT" 10mm LETTERS TO BOTH SIDES OF DOOR LEAF
- S14 "FIRE DOOR KEEP LOCKED" 10mm LETTERS TO BOTH SIDES OF DOOR LEAF
- S20 "FIRE ESCAPE KEEP CLEAR" 10mm LETTERS TO BOTH SIDES OF DOOR LEAF
- S22 "FIRE EXIT" 20mm LETTERS
- S25 "PUSH BAR TO OPEN" 20mm LETTERS
- S26 DIRECTIONAL ARROW (GREEN)
- FRG FIRE RESISTING GLAZING ELEMENT
- AREA COVERED BY ESCAPE LIGHTING TO BS.5266, PART 1
- AREA COVERED BY SMOKE DETECTORS
- AREA COVERED BY HEAT DETECTORS
- FIRE ALARM CALL POINT
- FIRE ALARM INDICATOR PANEL
- FIRE BLANKET IN CONTAINER
- CARBON DIOXIDE FIRE EXTINGUISHER
- 9 LITRE WATER EXTINGUISHER
- DRY POWDER EXTINGUISHER
- FOAM FIRE EXTINGUISHER
- ALARM WARNING DEVICE

ALL WALLS AND PARTITIONS TO BE MINIMUM HALF HOUR FIRE RESISTANT

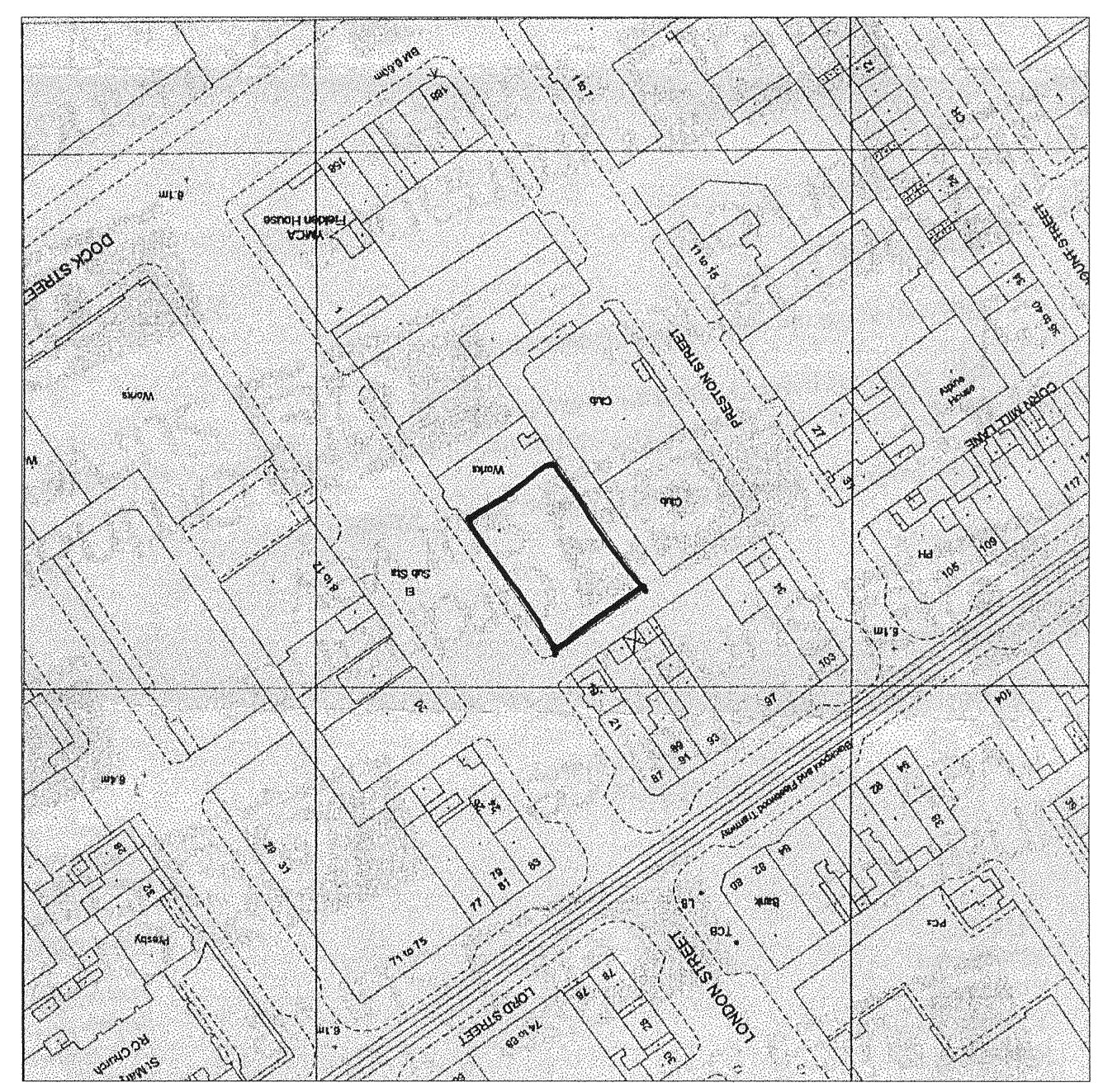
- EMERGENCY LIGHTING TO COMPLY WITH BS 5266 PART 1
- FIRE SAFETY RELATED SIGNS AND NOTICES TO COMPLY TO BS 5499
- FIRE FIGHTING EQUIPMENT TO COMPLY WITH BS 5306 WALL AND CEILING LININGS ARE TO BE CLASS 1 SURFACE SPREAD OF FLAME (AS DEFINED BY BS 476)
- AUTOMATIC FIRE DETECTION AND FIRE ALARM SYSTEM TO COMPLY WITH THE REQUIREMENTS OF BS 5839: PART 1: 1988
- CLASS 0 IN ESCAPE ROUTES
- UPHOLSTERED SEATING FURNITURE TO SATISFY THE FOLLOWING
  - \* IGNITION SOURCE (CIGARETTE TEST) AS SPECIFIED IN BS 5852 PART 1
  - FIRE TEST FOR FURNITURE METHODS OF TEST FOR THE IGNITABILITY BY SMOKERS
  - \* BS 5852 PART 2 FIRE TEST FOR FURNITURE-METHODS OF TEST FOR THE IGNITABILITY OF UPHOLSTERED COMPOSITES FOR TESTING BY FLAMING SOURCE. MINIMUM TEST TO BE CRIB IGNITION SOURCE 5
- FABRICS THAT HAVE HAD A FLAME RETARDANT TREATMENT TO PASS THE WATER SOAK TEST AS DETAILED BY BS 5851. TEST CERTIFICATE TO BE SUBMITTED TO FIRE AUTHORITY
- CURTAINS AND DRAPES TO SATISFY TYPE B, PERFORMANCE REQUIREMENTS TO BS 5867 PART 2
- ARTIFICIAL FOLIAGE AND DECORATIVE EFFECTS TO BE FIRE RETARDANT TO THE SATISFACTION OF THE FIRE AUTHORITY
- TOILETS
  - ALL WALLS TILED FULL HEIGHT
  - SANITARY FACILITIES HAVE BEEN DESIGNED TO BS 6465 PART 1 1994 CODE OF PRACTICE FOR THE SCALE AND PROVISION, SELECTION AND INSTALLATION OF SANITARY APPLIANCES
- KITCHEN
  - ALL WALLS TO BE TILED FULL HEIGHT

LICENCE KEY

- AMBT OF LICENSED AREA
- NO SMOKING WITHIN LICENSED AREA



FIRST FLOOR PLAN



LOCATION PLAN N.T.S.

HARRISON INCE	ARCHITECTS INTERIOR DESIGNERS
client	JD WETHERSPOON PLC
project	THE THOMAS DRUMMOND, LONDON ST. FLEETWOOD
title	PROPOSED GROUND, FIRST & SECOND FLOORS
date	MAY 2001
scale	1:100 @ A1
job no.	JD 90
drawn	KB
checked	

2218