

The Corn Stores, Reading

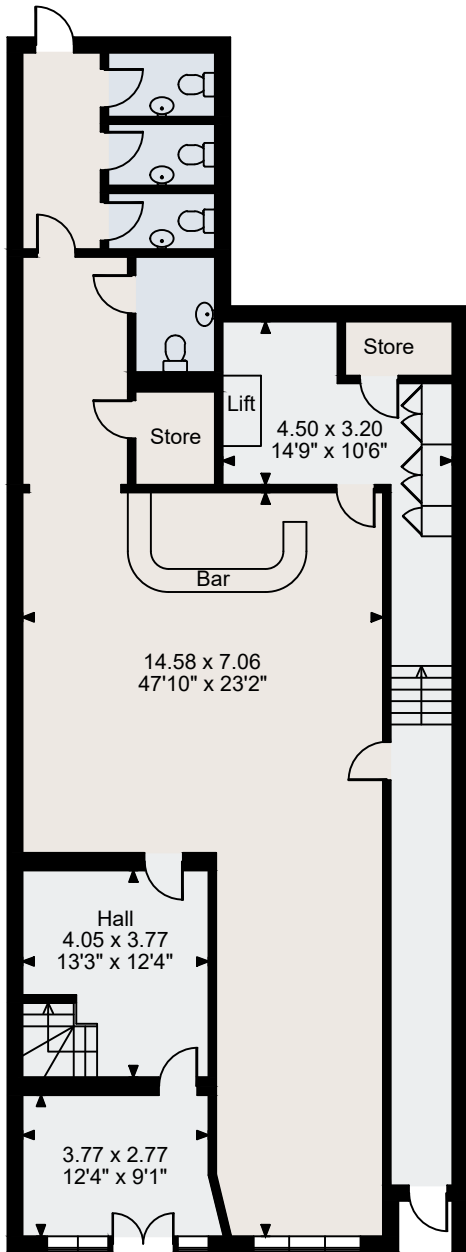
Ground Floor gross internal area = 1,824 sq ft / 169 sq m

First Floor gross internal area = 1,566 sq ft / 145 sq m

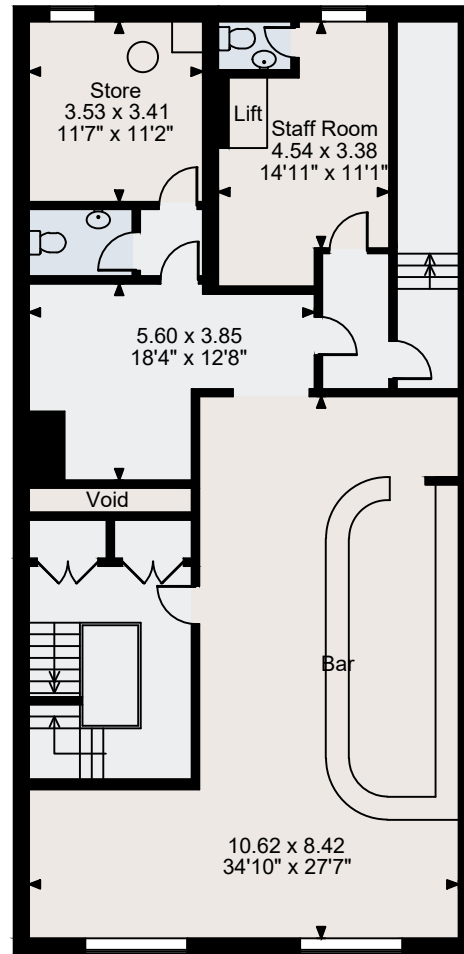
Second Floor gross internal area = 1,562 sq ft / 145 sq m

Third Floor gross internal area = 1,578 sq ft / 147 sq m

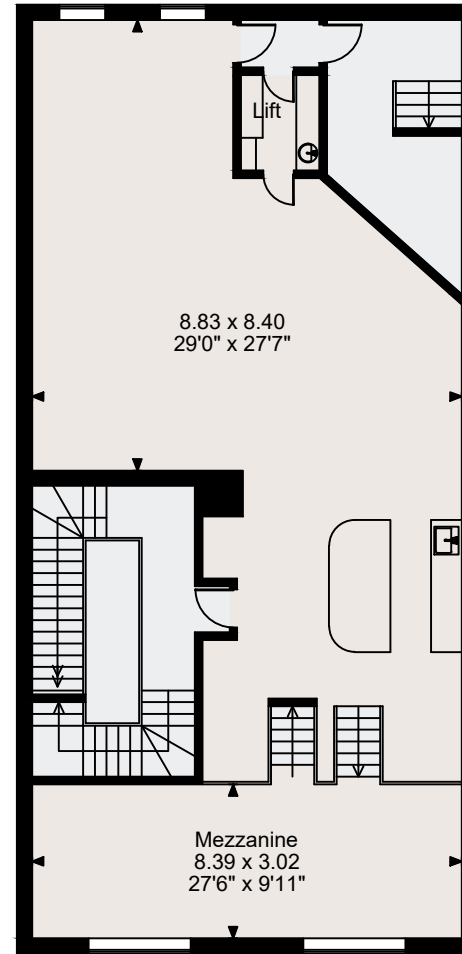
Total gross internal area = 6,530 sq ft / 607 sq m



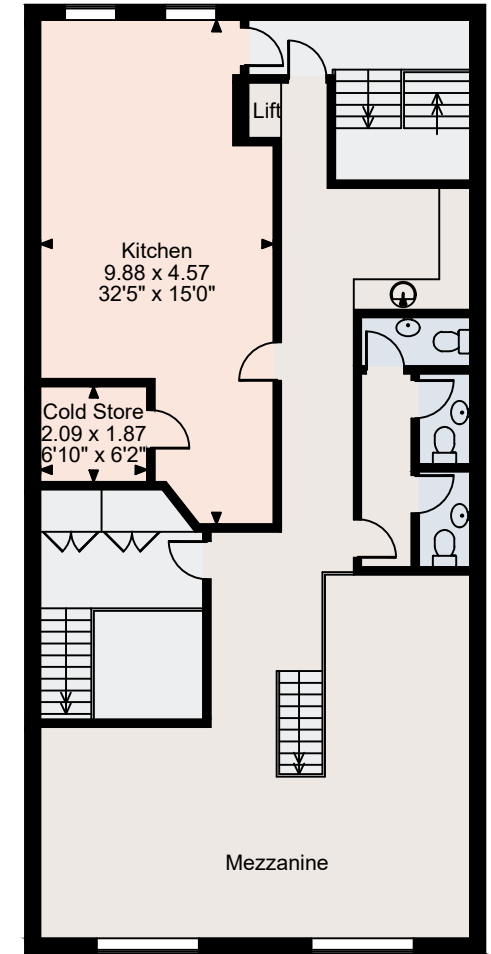
Ground Floor



Third Floor



First Floor



Second Floor

FOR ILLUSTRATIVE PURPOSES ONLY - NOT TO SCALE

The position & size of doors, windows, appliances and other features are approximate only.

© ehouse. Unauthorised reproduction prohibited. Drawing ref. dig/8582950/PCU